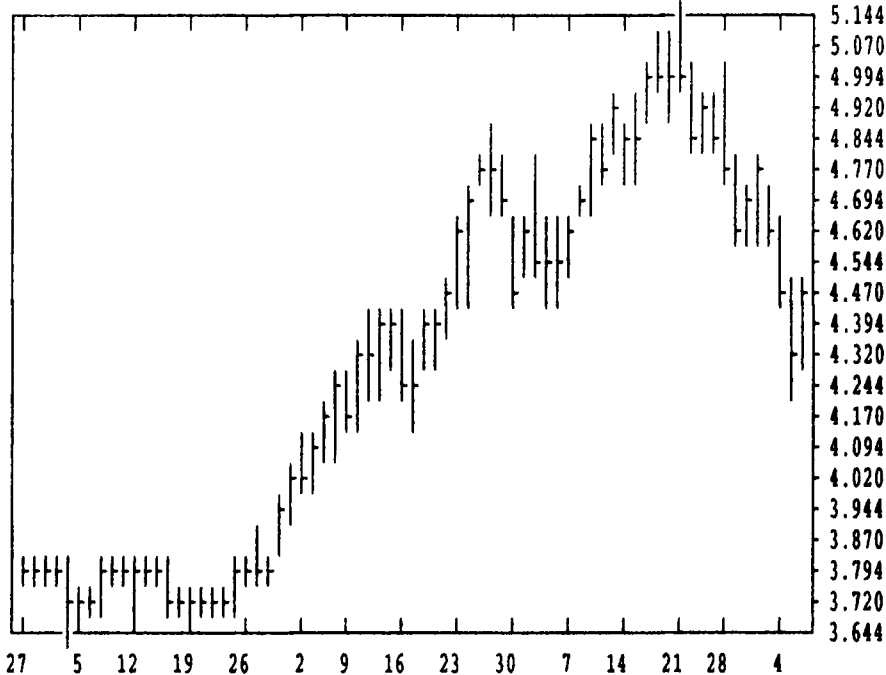


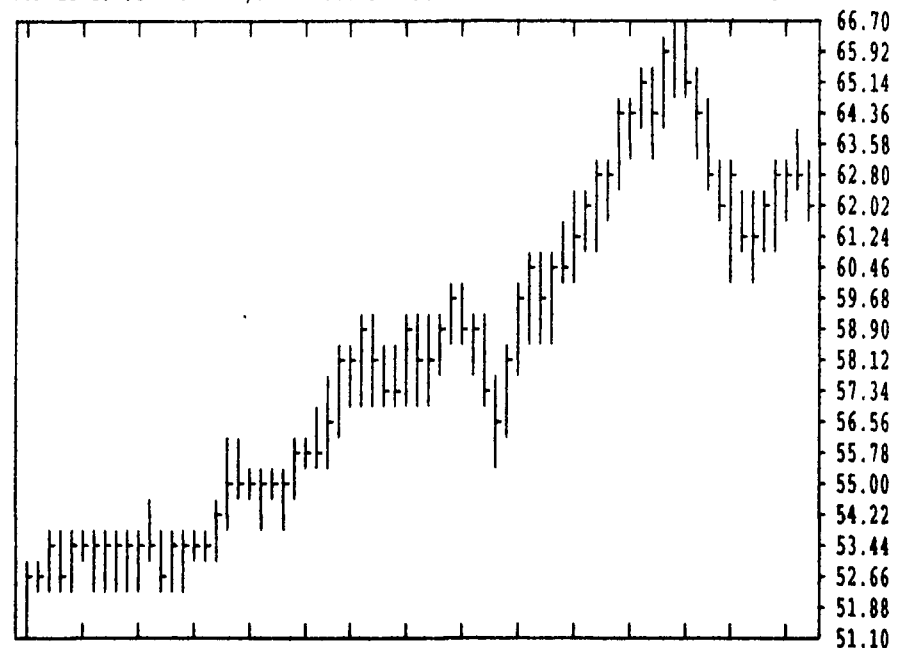
GRAIN, CATTLE AND HOG FUTURES MARKETS

(Closing bids: Thursday, June 6, 1996)

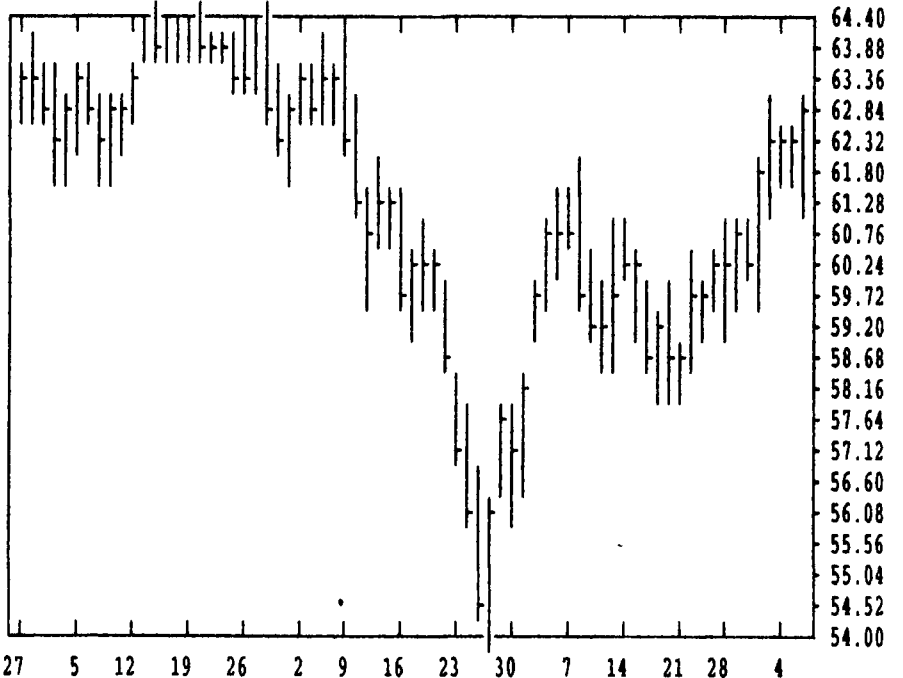
DTN GRAINS 18 CORN JUL 96 CONTRACT HIGH: 5.134 LOW: 2.540



DTN LIVESTOCK 18 LIVE/LEAN HOGS JUN 96 CONTRACT HIGH: 66.72 LOW: 45.20



DTN LIVESTOCK 19 CATTLE, LIVE JUN 96 CONTRACT HIGH: 64.60 LOW: 54.00

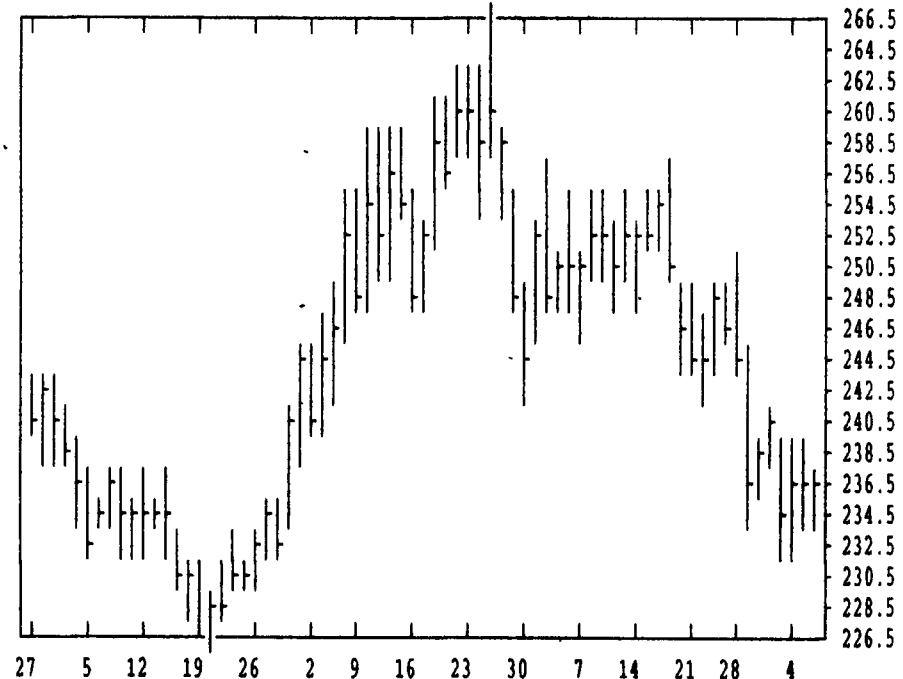


| DTN FUTURES 14 06/06/96 | | TECHNICAL POINTS | | | | | SLOW STOCHASTIC | | | | | |
|-------------------------|--------|------------------|--------|--------|--------|------|-----------------|-------|--------|----|----|----|
| PRICES ARE DECIMAL | | MOVING AVERAGES | | | RSI'S | | 5 DAY | | 20 DAY | | | |
| CONTRACT | CLOSE | 4-DAY | 9-DAY | 18-DAY | 45-DAY | 9DAY | 14DAY | 30DAY | %K | %D | %K | %D |
| WHEAT JUL | 494.25 | 501.25 | 521.44 | 549.83 | 557.61 | 22.8 | 31.0 | 43.2 | 8 | 11 | 6 | 7 |
| WHEAT SEP | 500.75 | 505.31 | 524.11 | 549.53 | 555.55 | 26.7 | 33.8 | 45.0 | 13 | 13 | 8 | 8 |
| KCWHT JUL | 564.25 | 564.00 | 582.47 | 618.15 | 614.94 | 31.1 | 36.8 | 46.7 | 16 | 15 | 8 | 8 |
| KCWHT SEP | 558.50 | 556.75 | 573.75 | 606.11 | 602.37 | 31.9 | 37.5 | 47.2 | 15 | 15 | 8 | 8 |
| MNWHT JUL | 553.50 | 552.37 | 575.17 | 608.07 | 599.41 | 27.5 | 34.9 | 46.2 | 17 | 11 | 7 | 7 |
| CORN JUL | 447.00 | 448.62 | 464.25 | 479.62 | 462.04 | 36.2 | 41.3 | 50.0 | 18 | 14 | 20 | 31 |
| CORN SEP | 381.50 | 380.94 | 393.58 | 405.49 | 386.57 | 39.5 | 44.4 | 51.4 | 26 | 20 | 21 | 36 |
| CORN DEC | 348.25 | 343.87 | 350.03 | 351.79 | 341.32 | 50.5 | 51.7 | 52.9 | 51 | 35 | 37 | 49 |
| OATS JUL | 219.50 | 214.56 | 216.92 | 230.50 | 242.78 | 41.3 | 41.0 | 44.4 | 69 | 42 | 14 | 8 |
| BEANS JUL | 766.00 | 766.69 | 780.61 | 796.08 | 802.47 | 32.6 | 37.5 | 45.4 | 29 | 25 | 15 | 19 |
| BEANS AUG | 762.25 | 762.56 | 777.67 | 794.44 | 801.52 | 30.2 | 35.8 | 44.6 | 24 | 20 | 12 | 16 |
| BEANS NOV | 731.25 | 730.87 | 748.58 | 764.31 | 773.44 | 28.5 | 34.0 | 43.8 | 20 | 17 | 11 | 16 |
| MEAL JUL | 236.20 | 236.20 | 239.31 | 244.76 | 249.78 | 35.4 | 38.0 | 44.3 | 44 | 33 | 17 | 15 |
| OIL JUL | 25.73 | 25.72 | 26.36 | 26.76 | 26.98 | 28.6 | 34.5 | 43.7 | 7 | 6 | 4 | 10 |
| CATTLE JUN | 62.85 | 62.44 | 61.54 | 60.55 | 60.13 | 73.4 | 65.6 | 56.2 | 88 | 88 | 92 | 83 |
| CATTLE AUG | 65.38 | 65.22 | 64.40 | 63.44 | 62.09 | 73.8 | 66.9 | 58.2 | 87 | 89 | 95 | 95 |
| PCTL AUG | 59.45 | 59.92 | 58.56 | 56.99 | 55.70 | 67.1 | 64.4 | 57.1 | 77 | 88 | 91 | 93 |
| HOGS JUN | 62.45 | 62.94 | 62.44 | 63.65 | 60.95 | 47.2 | 51.3 | 56.0 | 86 | 89 | 39 | 39 |
| HOGS JUL | 58.88 | 59.10 | 58.53 | 59.73 | 58.08 | 48.0 | 50.8 | 55.2 | 83 | 85 | 42 | 32 |
| PKBLS JUL | 85.70 | 82.76 | 82.87 | 84.34 | 81.97 | 58.5 | 56.9 | 58.7 | 89 | 57 | 29 | 17 |

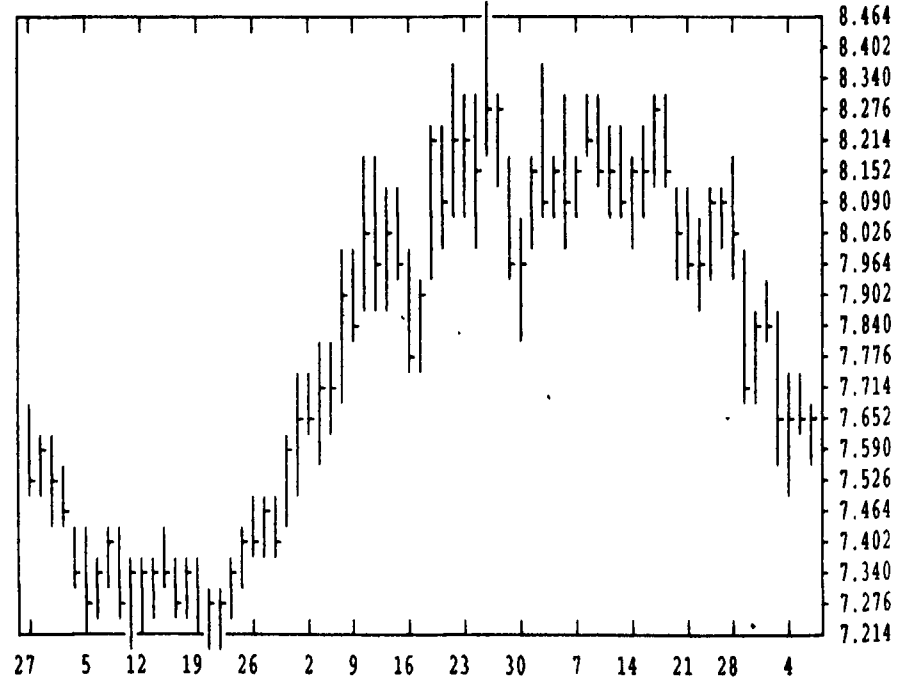
| CORN | | | | CHICAGO WHEAT | | | | K.C. WHEAT | | | |
|------|------|------|------|---------------|------|------|------|------------|------|------|------|
| JULY | SEP | DEC | MAR | JULY | SEP | DEC | MAR | JULY | SEP | DEC | MAR |
| 4470 | 3832 | 3502 | 3564 | 5060 | 5100 | 5194 | 5200 | 5794 | 5714 | 5760 | 5710 |
| 4340 | 3734 | 3430 | 3500 | 4860 | 4890 | 5004 | 5030 | 5510 | 5440 | 5500 | 5520 |
| LAST | LAST | LAST | LAST | LAST | LAST | LAST | LAST | LAST | LAST | LAST | LAST |
| CHG | CHG | CHG | CHG | CHG | CHG | CHG | CHG | CHG | CHG | CHG | CHG |
| +120 | +82 | +74 | +80 | +54 | +74 | +82 | +120 | +96 | +120 | +90 | +64 |
| 3594 | 3594 | 3594 | 3594 | 5794 | 5794 | 5794 | 5794 | 5794 | 5794 | 5794 | 5794 |
| 3550 | 3550 | 3550 | 3550 | 5794 | 5794 | 5794 | 5794 | 5794 | 5794 | 5794 | 5794 |
| 3574 | 3574 | 3574 | 3574 | 5794 | 5794 | 5794 | 5794 | 5794 | 5794 | 5794 | 5794 |
| +70 | +70 | +70 | +70 | 5794 | 5794 | 5794 | 5794 | 5794 | 5794 | 5794 | 5794 |
| 3574 | 3574 | 3574 | 3574 | 5794 | 5794 | 5794 | 5794 | 5794 | 5794 | 5794 | 5794 |
| +74 | +74 | +74 | +74 | 5794 | 5794 | 5794 | 5794 | 5794 | 5794 | 5794 | 5794 |
| 3554 | 3554 | 3554 | 3554 | 5794 | 5794 | 5794 | 5794 | 5794 | 5794 | 5794 | 5794 |
| +74 | +74 | +74 | +74 | 5794 | 5794 | 5794 | 5794 | 5794 | 5794 | 5794 | 5794 |
| 3040 | 3040 | 3040 | 3040 | 5794 | 5794 | 5794 | 5794 | 5794 | 5794 | 5794 | 5794 |
| +60 | +60 | +60 | +60 | 5794 | 5794 | 5794 | 5794 | 5794 | 5794 | 5794 | 5794 |
| 3040 | 3040 | 3040 | 3040 | 5794 | 5794 | 5794 | 5794 | 5794 | 5794 | 5794 | 5794 |
| +60 | +60 | +60 | +60 | 5794 | 5794 | 5794 | 5794 | 5794 | 5794 | 5794 | 5794 |
| 2910 | 2910 | 2910 | 2910 | 5794 | 5794 | 5794 | 5794 | 5794 | 5794 | 5794 | 5794 |
| +44 | +44 | +44 | +44 | 5794 | 5794 | 5794 | 5794 | 5794 | 5794 | 5794 | 5794 |
| 2910 | 2910 | 2910 | 2910 | 5794 | 5794 | 5794 | 5794 | 5794 | 5794 | 5794 | 5794 |
| +44 | +44 | +44 | +44 | 5794 | 5794 | 5794 | 5794 | 5794 | 5794 | 5794 | 5794 |

| LIVE CATTLE | | | | FREDER CATTLE | | | | LIVE HOGS | | | |
|-------------|------|------|------|---------------|------|------|------|-----------|------|------|------|
| JUN | AUG | OCT | DEC | JUN | SEP | OCT | NOV | JUN | AUG | OCT | DEC |
| 6290 | 6550 | 6645 | 6410 | 6015 | 6002 | 6025 | 6190 | 6297 | 5920 | 5575 | 5040 |
| 6160 | 6430 | 6565 | 6350 | 5925 | 5902 | 5930 | 6115 | 6185 | 5787 | 5445 | 4920 |
| LAST | LAST | LAST | LAST | LAST | LAST | LAST | LAST | LAST | LAST | LAST | LAST |
| CHG | CHG | CHG | CHG | CHG | CHG | CHG | CHG | CHG | CHG | CHG | CHG |
| +65 | +27 | +2 | +10 | -57 | -60 | -75 | -30 | -90 | -50 | -62 | -35 |
| 6325 | 6612 | 6612 | 6612 | 6270 | 6270 | 6270 | 6270 | 6270 | 6270 | 6270 | 6270 |
| 6275 | 6580 | 6580 | 6580 | 6235 | 6235 | 6235 | 6235 | 6235 | 6235 | 6235 | 6235 |
| +2 | +7 | +7 | +2 | -35 | -35 | -35 | -35 | -25 | -12 | +5 | +5 |
| 6315 | 6610 | 6610 | 6610 | 6270 | 6270 | 6270 | 6270 | 6270 | 6270 | 6270 | 6270 |
| +2 | +7 | +7 | +2 | 6270 | 6270 | 6270 | 6270 | 6270 | 6270 | 6270 | 6270 |
| 6315 | 6610 | 6610 | 6610 | 6270 | 6270 | 6270 | 6270 | 6270 | 6270 | 6270 | 6270 |
| +2 | +7 | +7 | +2 | 6270 | 6270 | 6270 | 6270 | 6270 | 6270 | 6270 | 6270 |
| 6315 | 6610 | 6610 | 6610 | 6270 | 6270 | 6270 | 6270 | 6270 | 6270 | 6270 | 6270 |
| +2 | +7 | +7 | +2 | 6270 | 6270 | 6270 | 6270 | 6270 | 6270 | 6270 | 6270 |
| 6315 | 6610 | 6610 | 6610 | 6270 | 6270 | 6270 | 6270 | 6270 | 6270 | 6270 | 6270 |
| +2 | +7 | +7 | +2 | 6270 | 6270 | 6270 | 6270 | 6270 | 6270 | 6270 | 6270 |

DTN GRAINS 25 SOYBEAN MEAL JUL 96 CONTRACT HIGH: 266.4 LOW: 183.0



DTN GRAINS 23 SOYBEANS JUL 96 CONTRACT HIGH: 8.470 LOW: 5.994



Editor's Note: Starting with the February, 1997 Hog Futures Contract, the price reflects dressed prices rather than live prices. For more information contact your local futures contract broker.