

A GENERAL-PURPOSE TRACTOR YOU CAN REALLY GET INTO.

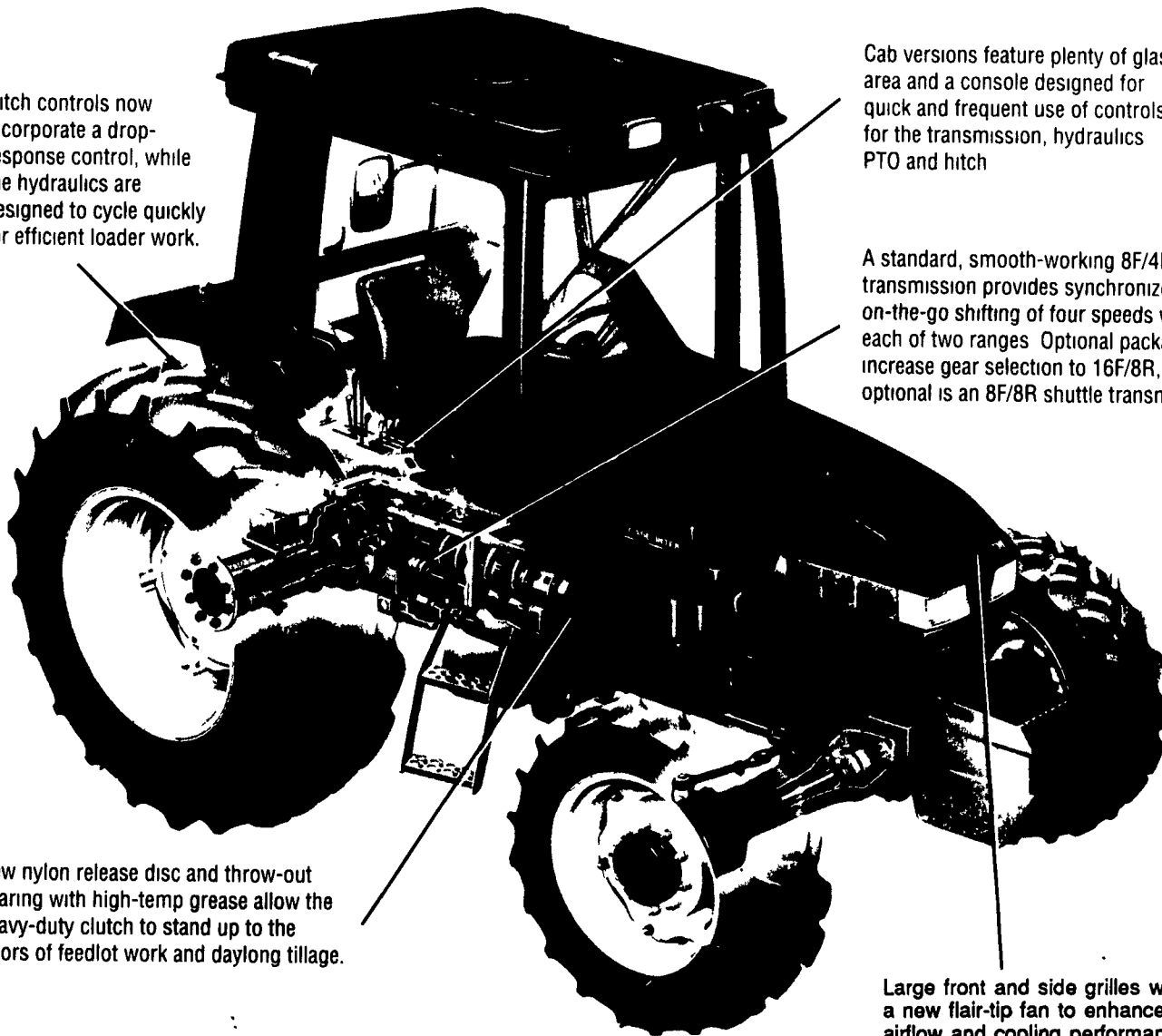
Hitch controls now incorporate a drop-response control, while the hydraulics are designed to cycle quickly for efficient loader work.

Cab versions feature plenty of glass area and a console designed for quick and frequent use of controls for the transmission, hydraulics PTO and hitch

A standard, smooth-working 8F/4R transmission provides synchronized on-the-go shifting of four speeds within each of two ranges. Optional packages increase gear selection to 16F/8R, also optional is an 8F/8R shuttle transmission

New nylon release disc and throw-out bearing with high-temp grease allow the heavy-duty clutch to stand up to the rigors of feedlot work and daylong tillage.

Large front and side grilles work with a new flair-tip fan to enhance engine airflow and cooling performance.



The Case International 3200 and 4200 Series tractors. Five tractors designed to the industry-leading performance criteria established by MAGNUM™ and MAXXUM®. These 42 to 85 PTO hp tractors set the standard for mid-range productivity.

To see which 3200/4200 tractor best suits your needs, visit one of the Case IH dealers listed here today. And while you're there, ask about Total Product Support — our commitment to the service and parts that add life to your tractor.

See your local Case IH dealer today

Messick Farm Equipment, Inc.

Elizabethtown, PA

Messick Farm Equipment's beginnings go back to November 26, 1952, when two brothers, Marlin and Merville Messick broke ground and erected a new building along Route 230, three miles north of Elizabethtown.

The dealership officially opened on February 1, 1953, with Marlin as Shop Manager, and Merville handling both the sales and parts department.

Two years later a full-time salesman and one additional mechanic were hired, and in 1962 an addition was built to the existing building, housing a showroom and additional parts area.

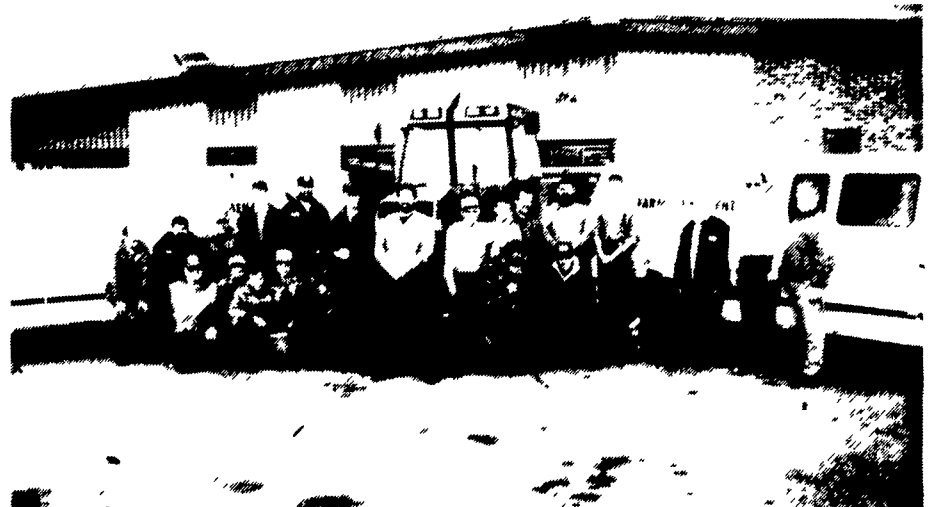
The successful Messick enterprise once again outgrew its shell, and a new 21-acre site was purchased at the present location along Route 283, at the Rheems Exit, Elizabethtown.

With the new facilities providing 7,200 square feet of shop space, and 6,000 square feet of showroom, Messick celebrated its grand opening in February of 1977. Messicks have since expanded the building twice and have built an additional warehouse.

Today Messick attributes much of its growth to its 44 employees, including 15 mechanics, 12 partsmen, 5 salesmen, and four office personnel.

Factory trained as well as privately instructed, Messick's servicemen have years of experience in the agricultural field. The firm's parts department has experience in providing customers with the correct parts as quickly as possible.

To Messick's staff, the idea of simply making a sale, is secondary to their goal of providing the customer with the correct equipment to get the job done. They are committed to keeping their customers up and running with over 1 million dollars in parts inventory.



Service Department

Over 150 years combined experience in our Service Department. Serving you with fully equipped service vans to get you up and running fast.

Messicks has a 1-800 number, 1-800-222-3373, also a fax number, 717-367-6662, to be able to provide their services to the customers. They ship and receive by UPS, Federal Express, RPS, Airborne, Motortruck, and via their own 'on the farm' Parts Route Delivery/Sales Truck. Their hours are 7:30-5:00, Monday-Friday, and 7:30-12:00 on Saturdays.