

A Tradition Of Dairying

(Continued from Page B37)

and longevity, but the biggest factor is income over feed cost," said Elaine. "If your income over feed cost isn't high enough, it doesn't matter how high your average production is, you're still not going to pay the bills."

Being involved with the farm since they were young, farming seemed a natural career choice for Steve and Stuart. Steve was graduated from Troy High School in the Industrial Arts program and Stuart, who also was graduated from Troy, was a member of FFA throughout his high school years.

Recently Stuart and Elaine were recognized through the Jersey Association as Pennsylvania's

Outstanding young dairyman. Stuart is also a state director with the PJCA and serves as an alternate delegate for Milk Marketing Incorporated. Elaine has been a 4-H dairy leader, but relinquished her post this year. Elaine and Stuart are expecting their second child in September.

In addition to farming, Steve serves as the assistant chief for the Daggett fire company. His daughter is also an avid 4-H member and is no stranger to the show ring.

Shirley and Tom's other children, Sharon Noble Borek, Terry, and Tim and his wife Julie, are employed off the farm, but their children also enjoy the farm, and love to show the Jerseys at the loc-

al fair.

"Tom always wanted to see his grandchildren show the cows," said Shirley, "But that didn't happen."

As the family looked through albums filled with photographs, news articles and other memories, they recalled the best memories in the show ring.

"The best show was the year after Tom died at the Troy Fair when we took it all," said Shirley "That was pretty impressive. I wrote in the album, 'This is for you, Dad.'"

"That's the first year we ever had premier breeder and exhibitor, too," recalled Stuart.

Last year they had supreme champion at the Troy Fair with Nobledale Juno Vermont. Not too many years ago, grandson Tommy

took grand champion honors at the same show.

They have also shown at the Chemung County Fair in New York, the Pennsylvania All American, and the All American Jersey Show in Louisville, Ky.

The love of the cow is also evident in every nook and cranny of the farm house. Thousands of cows, stuffed, ceramic, painted or molded adorn the house. They also have a substantial milk bottle collection amassed by Tom before his death. Many of the finest pieces of the bottle collection were smashed in the automobile accident, including a full set of bottles featuring

Hop-Along Cassidy.

Perhaps the biggest question on the minds of the Noble family is, will the eighth generation be able to carry on the farming tradition?

"The boys work so hard and milk prices are so low. I really admire them for staying here and working so hard. I wonder where the next generation will be," said Shirley.

One thing is evident when talking to the Noble family. No matter what the future brings, the tradition that was started more than 150 years ago will forever be a strong part of the Noble heritage.



Petersheim's Cow Mattresses

Rubber Filled Cow Mattresses

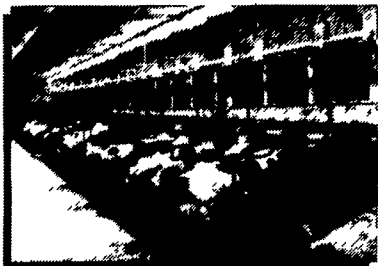
117 Christiana Pike (Route 372)

Christiana, PA 17509

The Answer to Cow Comfort



- Fits Any Stall
- Reduces Bedding Costs
- Polypropylene Bag Filled with Rubber



- Sewn Every 4" To Prevent Shifting
- Easier For Cows To Get Up And Down
- NEW! Non-woven 50 oz. Top Cover - Less Abrasive

ALSO: Custom Loop Stalls For Existing Barns

INSTALLATION AVAILABLE. CALL FOR DETAILS

SAM PETERSHEIM 610-593-2242

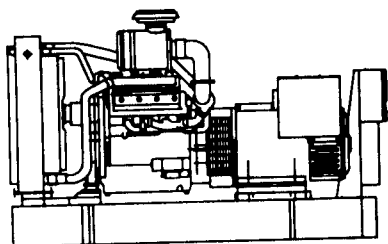
C.S. Supply

RD 1, Mill Hall, PA 17751

717-726-6760

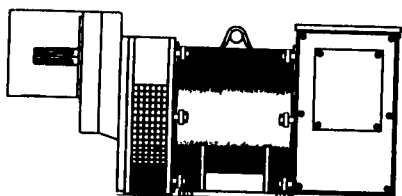
GENERATOR SYSTEMS

1-800-779-8809



New & Used 5 to 2500 KW
Diesel • Propane • Natural Gas

24 Hour Emergency Service
Sales - Installation
Maintenance Contracts • Rentals



10 To 150 KW 1800 RPM Brushless
Tractor Driven Generators

DYNA TECH^{Ind.}
Dynamic Technologies

DYNA-TECH INDUSTRIES

602 E. Evergreen Rd., Lebanon, PA 17042

717-274-8899 FAX 274-8934

Ask About Our Lightning & Surge Protection Units
Panel Mount • Plug-In • Electric Fence Protection

Quick Change Artist.

Go from field to feedlot to farmyard, faster and easier with a 55-180 HP MF[®] tractor and matching MF 900 Series loader.

Patented Quick-Couple™ control valve assembly lets you connect hydraulics with one lever

Exclusive Quick-Attach design lets one person quickly mount or remove the loader

Quick-attach buckets let you switch attachments without removing mounting pins

Your Massey Ferguson Dealer has a top-performing MF loader for every MF tractor and job. Stop by today for more information and a test lift.



MASSEY FERGUSON

Massey Ferguson is a wholly owned subsidiary of AGCO Corporation, Duluth, GA



NEW MF 900 Series Loaders					
Tractors	HP	MF 932	MF 938	MF 948	MF 968
MF 362	55	4WD			
MF 375 393 398	60 83		ALL		
MF 396 399	88 95			ALL	
MF 610 [®] Series	86 110			ALL	
MF 2123	130			ALL	
MF 8140 8160	145 180			ALL	

SEE YOUR NEAREST DEALER FOR DETAILS

C.J. WONSIDLER

1975 Trumbauersville Rd.
Quakertown, PA 18951
(215) 536-1825
Routes 309 & 100
New Tripoli, PA 18068
(610) 767-7611

HERNLEY'S FARM

EQUIPMENT, INC.
2085 S. Market St.
Elizabethtown, PA
(717) 367-8867

MID-STATE

EQUIPMENT CO., INC.
1482 River Rd. (Rte. 29)
Trenton, NJ 08660
(609) 737-7400
(609) 782-2244

SCHREFFLER

EQUIPMENT
Pittman, PA 17964
(717) 648-1120

D.W. OGG

EQUIPMENT CO.
5149 Cap Stine Rd.
Frederick, MD 21701
(301) 473-4250
Westminster, MD
(410) 848-4585

LEBANON VALLEY

IMPLEMENT CO.
700 E. Linden St.
Richland, PA 17067
(717) 866-7518

MILLER

EQUIPMENT CO.
Stauffer Road
Bechtelsville, PA 19505
(610) 845-2911

S.G. LEWIS

AND SON
West Grove, PA 19390
(610) 869-8440
(610) 869-2214

ECKROTH BROS.

FARM
EQUIPMENT
RD #2, Box 24A
New Ringgold, PA 17960
(717) 843-2131

M.M. WEAVER &

SON
N. Groffdale Rd.
Leola, PA 17540
(717) 656-2321

PEOPLE'S SALES

& SERVICE
Oakland Mills, PA 17076
(717) 463-2735

TEST DRIVE
ONE TODAY!

MEYERS

IMPLEMENTS, INC.
409 North Antrim Way
Greencastle, PA 17225
(717) 597-2176

FRANK RYMON &

SONS, INC.
369 Route 31 South
Washington, NJ 07882
(908) 689-1464



MASSEY FERGUSON