

EQUIPMENT

QUALITY HAY CROPS



ment to handle bales when ready to feed. Balers will work, but the "rope" in the middle of the bale can result in wasted feed. Bales can weigh from 1400# - 1600#. Due to the need for as much air as possible, the bale chamber must be kept open. A heavy duty drive system, consistent

density control, and reliable pick-up mechanism are also required. Balers equipped with a built in cutting mechanism are able to increase bale density by up to 20%, and prechopped material can be easily fed. Be sure to use untreated sisal, plastic or nylon twine if you intend to wrap high moisture bales. Treated Sisal twine produces a chemical reaction that will burn through plastic film.

TUBE-LINE BALEWRAPPER

BIG BALE SILAGE

Big bale silage has become an economical alternative to dry hay or chopped silage. High quality feed can be made with a low investment in equipment. Forage is cut, wilted and sealed air tight with stretch film.

SAVES FILM - REDUCES COST

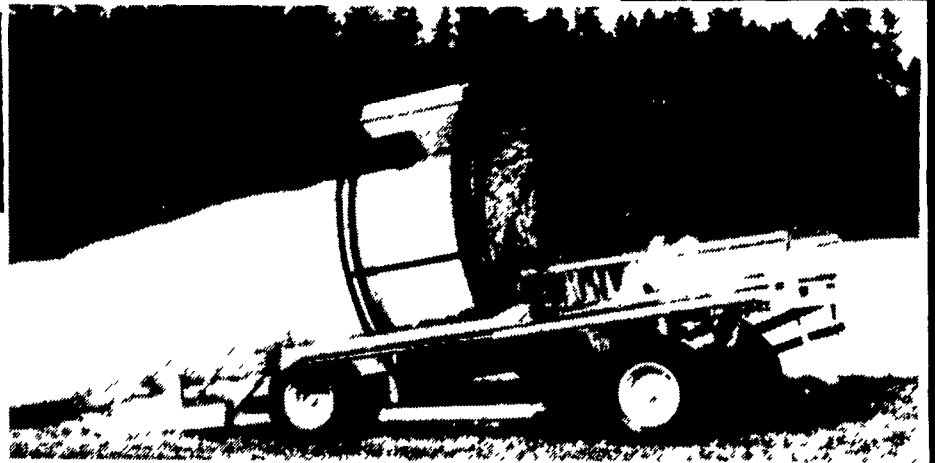
After the ends are sealed, Tube Line bale wrappers wrap only the circumference of the bales compared to single bale wrappers which wrap the ends of each bale. This saves at least 40% on film cost.

SAVES TIME

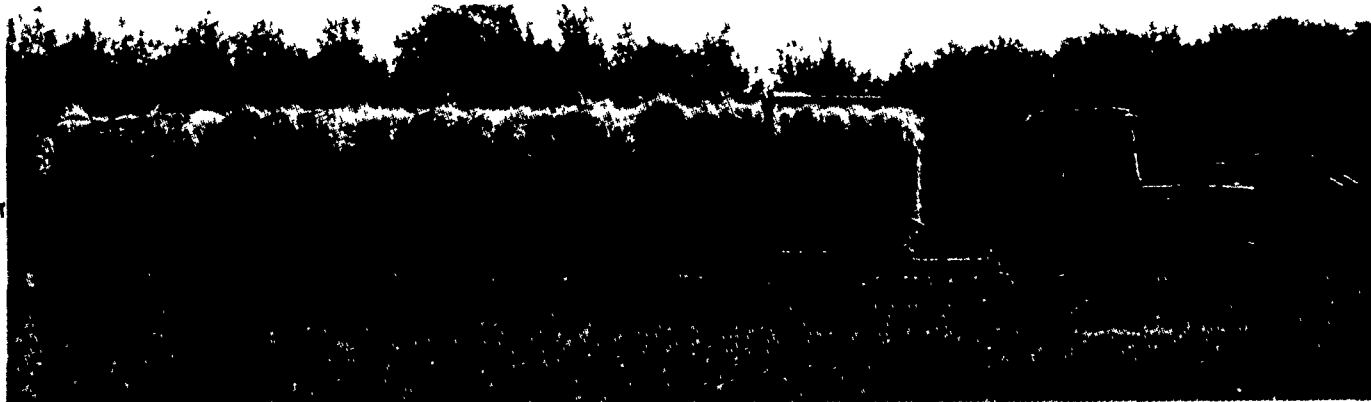
On average the Tube Line machines will wrap a bale per minute. Various options are available to match the speed of wrapping with needs of the farmer. These options include a second tensioner and 30 inch wide plastic.

BALE SIZE

There is a Tube Line Wrapper available which will wrap almost all sizes of bales from a 4'x4' round bale to the biggest of square bales.



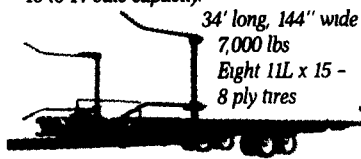
From field to yard, efficiently



Here's the world leader in large, round bale pickup, transport and unloading with one operator who never leaves the tractor cab.

Fifteen years of proven performance on every terrain and all weather or field conditions from Alberta to Alabama makes Kingsman the master of fast, convenient, safe handling of bales of more than 2,000 lbs.

Model 217 with adjustable pickup arms on both sides, split left/right deck chains with twine protecting guide channels, 10 to 14 bale capacity.



34' long, 144" wide
7,000 lbs
Eight 11L x 15 - 8 ply tires

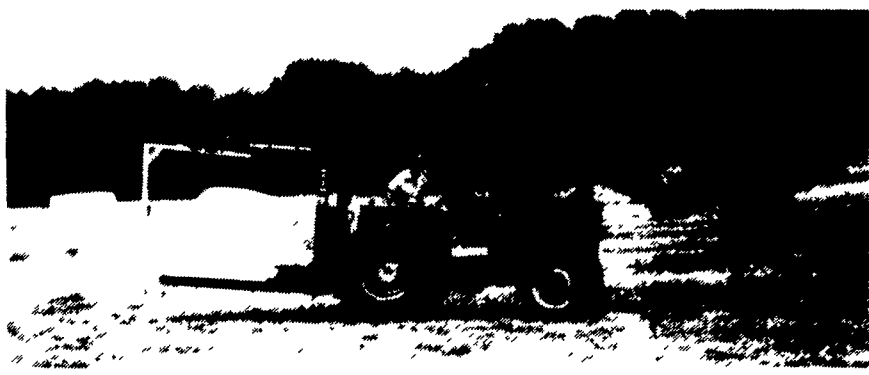
Model 208 for use with smaller tractor or pickup truck, 7 to 10 bale single row transporter



41' long, 98" wide 3,980 lbs
Four 12 5L x 15 - 12p tires



AG WRAP BALE WRAPPER



Wraps Bales up to 5 ft. x 5 1/2 ft.

- 3-Point Hitch
- Hydraulic requirement 4 GPM - 2 remotes
- Pre-stretcher for plastic
- One-man operation
- Wrap on the move
- Transport bales to storage
- Picks bale up, wraps them all hydraulically
- Built in U.S.A.

100 Stover Drive
Carlisle, PA 17013
717/249-6720

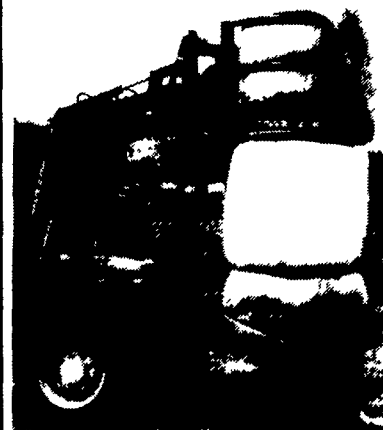
100-120 Lehigh Ave. • P.O. Box 928
Batavia, New York 14021-0928
716/343-5411

Serving Farmers Through Farm Equipment Dealers Since 1961"



WRAPPED BALE GRABBER

The Logical and Economical Answer to your Handling and Stacking of Wrapped Round Bales.



WIFO Bale Grabs are perfect for positive control of both wrapped and unwrapped bales. The extra wide (6") spread width will pick up bales from any direction. "Double Hinge" points on each arm provide extra stability.



WIFO'S

- Outstanding Quality Workmanship

