

Snyder County Produce Auction

Open 12 noon Mon., Fri.
Port Trevorton, PA
May 20

Report Supplied by Auction
POTATOES: 2.00-8.00 50 LB. BAG.
ONIONS: 6.00-8.25 50 LB. BAG.
CARROTS: 4.00-7.00 50 LBS.
LETTUCE: 12.00-13.00 24 CT.
GRAPEFRUIT: 8.00-9.25.
ORANGES: 12.00 113 CT.
BANANAS: 8.00-11.75 40 LBS.
GRAPES: 12.75 18 LB. BOX.
GARLIC: 22.00 30 LBS.
STRAWBERRIES: 6.00-7.75 FLAT.
ASPARAGUS: .70-1.00 1/2 LB.
PEPPERS: EX. LARGE 10.00-11.00 1 1/9 BU.
TOMATOES: 8.00-16.25 25 LBS.
CUCUMBERS: 2.00-13.25 1 1/9 BU.
CANTALOPES: 1.20-1.55 15 CT. BOX.
WATERMELON: 4.60-5.00 20-22 LBS.
HANGING BASKETS: 4.00-7.25.
FLOWERS: BY THE FLAT, 3.00-7.00.
SHRUBS: 3.50-10.00.
RHODODENDRON: 5.00-6.50.
VEGETABLE PLANTS BY THE FLAT 2.00-6.75.
NEXT SALE MAY 27, MEMORIAL DAY AT NOON.

Philadelphia

Potato

PHILADELPHIA
MAY 22, 1996

ONIONS AND POTATOES

---ONIONS DRY: MARKET ABOUT STEADY US#1 OR GENERALLY GOOD QUAL AND COND UNLESS OTHERWISE STATED. Yellow Globe Type NY 50 lb sks med-lge 5.00-6.00 med 4.00-5.00 mstr cntr 20 2-lb mahaks med 4.00-5.00 NEW CROP Yellow Granex GA 50 lb sks med fr appearance 12.00 50 lb cns lge 18.00-21.00 few 22.00 fr cond 12.00-15.00 mos 14.00 med fr qual & cond 5.00-10.00 Grano CA 50 lb sks jbo fr cond 5.00-5.50 MX 50 lb sks rpktr sz 8.00 TX 50 lb sks cool 6.50-7.50 fr cond 5.00 jbo 6.50-7.00 mostly 7.00 few 7.50 occ 6.00 rpktr sz 8.00 few 8.50-9.00 Red TX 25 lb sks jbo 6.50-7.00 med 5.50 some 6.00
---POTATOES: MARKET ABOUT STEADY US#1 SZ A WASHED OR BRUSHED UNLESS OTHERWISE

STATED Russet Burbank CD Prince Edward Island CDOne 50 lb ctns 70s 12.00 80s 11.00 90s 10.00 100s 9.00 ID bid 10 5-lb sks non sz A 9.00-11.00 few 11.50 50 lb ctns 70s 17.00-19.00 80s 16.00-17.50 some 18.00 90s 12.00-13.00 mostly 12.00-12.50 100s 10.00-11.00 mostly 10.00-10.50 some 9.00 Norkotah WA 50 lb ctns 70s 15.00 80s 15.00 Round White CD Prince Edward Island 50 lb sks 6.50 lge 7.50-8.00 NEW CROP Round Red AZ 50 lb sks sz B 16.50 CA 50 lb ctns 13.00-14.00 sz B 18.00 FL 50 lb sks 10.00-11.00 mostly 10.00-10.50 fr qual 7.00-8.50 sz B 13.00-14.00 mostly 13.50 fr qual 12.00 Round White FL 50 lb sks 10.00-11.50 mostly 10.00 fr cond loas 9.00 fr qual 7.00-8.00 sz B 8.50-9.00 few 11.00 Long White CA 50 lb sks 14.00-15.00 sz B 11.00

New Holland Sales Stables Goat and Sheep Sale

Monday, May 20, 1996

GOATS: 469 HEAD. BILLIES 75.00-100.00 AND 100.00-160.00; MUTTON 70.00-90.00; NANNIES 45.00-60.00 AND 60.00-75.00; YEARLINGS 45.00-60.00 AND 60.00-75.00; KIDS 20.00-30.00 AND 30.00-40.00.
SHEEP: 878. ALL WEIGHTS, RAMS 20.00-35.00; EWES 20.00-40.00; 1 YEAR-OLD 35.00-80.00; 2 YEAR-OLD 30.00-50.00.
WOOL LAMBS: 80-100 LBS. 85.00-105.00; NEW CROP LAMBS 30-50 LBS. 120.00-140.00; FEW FEEDER LAMBS 30-50 LBS. 90.00-100.00, 50-80 LBS. 110.00-130.00, 80-100 LBS. 110.00-120.00.

Carlisle Livestock Market

Carlisle, Pa.

Tuesday, May 21, 1996

Report Supplied by Auction

SLAUGHTER CATTLE: STEERS, CHOICE 56.00-60.75; SELECT AND LOW CHOICE 53.00-55.75; SELECT, MOSTLY LIGHTS 45.00-52.75; HOLSTEINS CHOICE 47.00-51.00; SELECT AND LOW CHOICE 43.00-46.75; COUPLE COMMERCIAL 38.00-42.75.
HEIFERS: CHOICE 53.75-58.75; SELECT AND LOW CHOICE 46.00-53.50; HOLSTEINS TO 51.00.
SLAUGHTER COWS: ACTIVE!

BREAKING UTILITY AND COMMERCIAL 37.00-41.00; CUTTER AND BONDING UTILITY 34.00-39.00; CANNER AND LOW CUTTER 32.00-35.50; BIG MIDDLE 34.50-36.50; SHELLY 29.00 DOWN.

BULLS: 39.00-43.00.
FEEDER CATTLE: FEEDER STEERS MEDIUM/LARGE, ALL WEIGHTS 52.00-65.00; FEEDER HEIFERS MEDIUM/LARGE, ALL WEIGHTS, 38.00-51.00; FEEDER BULLS MEDIUM/LARGE ALL WEIGHTS 37.00-54.00; HOLSTEIN DAIRY TYPES TO 52.00.
CALVES: VEALERS STANDARD AND GOOD 35.00-70.00; HOLSTEIN BULLS #1 90-130 LBS. 90.00-105.00; #2 85-130 LBS. 68.00-89.00; BEEF X BULLS TO 90.00; BEEF X HEIFERS TO 98.00.

SWINE: HOGS US#1-3 220-270 LBS. 61.25-63.00, 180-210 LBS. 54.00-57.00.
SOWS: STRONG DEMAND! US#1-3 300-600 LBS. 40.50-48.25; THIN/WEAK/ROUGH TO 35.00.

BOARS: ALL WEIGHTS 29.50-36.25.
FEEDER PIGS: BY THE HEAD 25-45 LBS. 24.00-36.00.

GOATS: BY THE HEAD, MEDIUM NANNIES/BILLIES 60.00-87.50; FLESHY KIDS 37.50-60.00; SMALL KIDS TO 30.00.

LAMBS: GOOD AND CHOICE 30-130 LBS. 86.00-130.00.

SHEEP: ALL WEIGHTS 16.00-78.00.
SALE EVERY TUES. 5:45 P.M. FOR PRODUCE, RABBITS, POULTRY AND EGGS; 7 P.M. FOR LIVESTOCK.

NEXT STATE GRADED FEEDER PIG SALE FRIDAY, MAY 24 AND JUNE 14. RECEIVING 7-11 A.M. SALE TIME 1:30 P.M.

NEXT SPECIAL FEEDER AND FED CATTLE SALE WILL BE HELD TUES., JUNE 4 AND 18. SALE TIME FOR FEEDER CATTLE WILL BE APPROX. 7:30 P.M. PEN LOTS OF CATTLE WILL BE SOLD IN ORDER RECEIVED.

EARLYBIRD PENS FOR FED CATTLE, COWS AND HOGS CLOSE EVERY TUES. AT 2 P.M. FOR PREMIUM PRICES, USE THESE PENS.

HATFIELD'S TOP PRICE FOR CASH HOGS ON WED., MAY 15 WAS 63.00.

Dewart Livestock

DEWART, PA
MAY 20, 1996

CATTLE 55... PDA .

STEERS: one Select 51.25.
HOLSTEINS: one Prime 1490 lbs. 55.25, few Choice 1400/1495 lbs. 50.25-53.75.
HEIFERS: couple Select Holsteins 42.00 & 42.25.
COWS: few Breaking Utility and Commercial 34.25-40.00, few Cutter and Bonding Utility 33.00-34.25, few Canner and Low Cutter 25.50-29.50. Shells down to 21.25.

BULLS: couple Yield Grade No. 2 965/990 lbs. 32.75 & 37.25.

FEEDER CATTLE: STEERS & BULLS: few Medium Frame No. 1 280/690 lbs. 31.00-41.00, few 47.00.

CALVES 74...Holstein bulls 25.00 lower.

VEALERS: Standard and Good 75/100 lbs. 37.00-40.00, Utility 55/80 lbs. 29.00-37.00.

FARM CALVES: No. 1 Holstein bulls 90/115 lbs. 65.00-110.00, one 113.00, No. 2 80/100 lbs. 40.00-55.00; few No. 1 Holstein heifers 95/110 lbs. 130.00-140.00. Few beef cross bulls and heifers 55/100 lbs. 40.00-75.00.

HOGS 69...BARROWS AND GILTS: US 1-3 220/265 lbs. 57.75-59.75, few 190/200 lbs. 46.00-52.00.

SOWS: few US 1-3 315/670 lbs. 38.50-40.00.

BOARS: few 31.75-36.00.

Eighty-Four Livestock

EIGHTY FOUR, PA
MAY 20, 1996

CATTLE 224... PDA ..Compared with last week's sale...cows steady, bulls steady to 4.00 higher.

STEERS: Select 43.50-49.00, Standard 34.25-43.00.

HOLSTEINS: Select 36.50-44.00.
HEIFERS: Choice 950/1175 lbs. 51.75-58.00, Select 38.25-39.50, Standard 31.00-37.50.

COWS: Breaking Utility and Commercial 34.25-38.50, few 40.00, Cutter and Bonding Utility 31.50-34.25, Canner and Low Cutter 25.25-30.50. Shells down to 20.00.

BULLOCKS: few Choice 44.50-50.00, few Select 38.00-43.50.

BULLS: Yield Grade No. 1 1000/1800 lbs. 42.50-50.75, No. 2 950/1600 lbs. 38.75-41.25.

FEEDER CATTLE: STEERS: Medium & Large Frame No. 1 475/785 lbs. 45.00-52.50, Medium & Large Frame No. 2 450/900 lbs. 26.00-45.50; HEIFERS: Medium & Large Frame No. 1 300/700 lbs. 44.00-49.00, one 57.50, Medium & Large Frame No. 2 350/800 lbs. 30.00-45.00; BULLS: Medium & Large Frame No. 1 450/650 lbs. 43.00-52.00, one 56.50, Medium & Large Frame No. 2 300/800 lbs. 28.00-45.00.

CALVES 81...Farm calves steady.

VEALERS: Choice 145/260 lbs. 68.00-77.50, Good 145/285 lbs. 32.50-61.00, Standard and Good 60/100 lbs. 28.00-45.00, Utility 60/110 lbs. 15.00-25.00.

FARM CALVES: No. 1 Holstein bulls 90/115 lbs. 80.00-121.00, No. 2 80/110 lbs. 40.00-65.00; No. 1 Holstein heifers 85/115 lbs. 92.50-107.50, No. 2 85/120 lbs. 42.50-77.50. Beef cross bulls and heifers 75/115 lbs. 42.50-77.50.

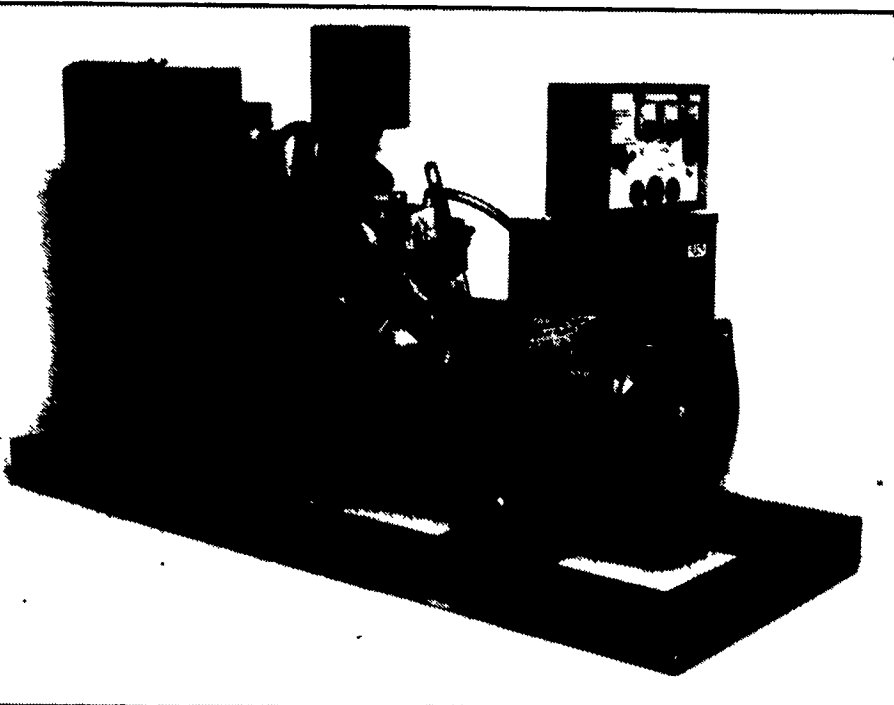
HOGS 63...Barrows and gilts steady to 3.50 higher, sows steady to 6.00 higher.

NOTICE
Stockyards We
Special Feeder
Thursday Of
At 12:00 Noon, Starting
1996.
This Sale Will Be In Place Of Our Regular Wed. Sale Which Will Be Discontinued Until the Fall Season. All Classes Of Feeders Will Be Represented With Numbers Available That Will Fill Your Needs.

MAXIPOWER

DIESEL, L.P., NATURAL GAS, AND P.T.O. GENERATORS

MAXIMUM Advantages



DIESEL GENERATOR KW RATINGS

MAXIPOWER MODEL	STANDBY RATING		PRIME POWER RATING	
	1800 rpm	1500 rpm	1800 rpm	1500 RPM
JD-30-D	30	25	30	25
JD-40-D	40	33	36	30
JD-60-D	60	50	54	45
JD-70-D	70	58	63	52
JD-90-D	90	75	81	68
JD-100-D	100	82	90	76
JD-125-D	125	103	115	92
JD-150-D	150	125	135	115
JD-180-D	180	148	162	135
JD-200-D	200	165	180	150
JD-250-D	250	220	225	200

Warranty

MaxiPower, LLC offers a limited warranty to the original user for two years or 1500 hours, whichever occurs first. Extended warranties to five years are available. A copy of the complete warranty policy is available on request.

Prime, Portable, or Standby

GENERATORS

MAXIPOWER, founded in 1973, enjoys a strong tradition of excellence. From its inception, MAXIPOWER has been a technological leader in the manufacture of engine gensets. MAXIPOWER is committed to manufacturing low cost, no frills, world class gensets at the lowest cost per kilowatt hour.

MAXIPOWER
MAXI-POWER, LLC

330 Fonderwhite Road, Lebanon, PA 17042-7835

Phone (717)-273-4544 * (800)-272-6294
Fax: (717)-273-5186

POWERful Performance

Used Generators Available