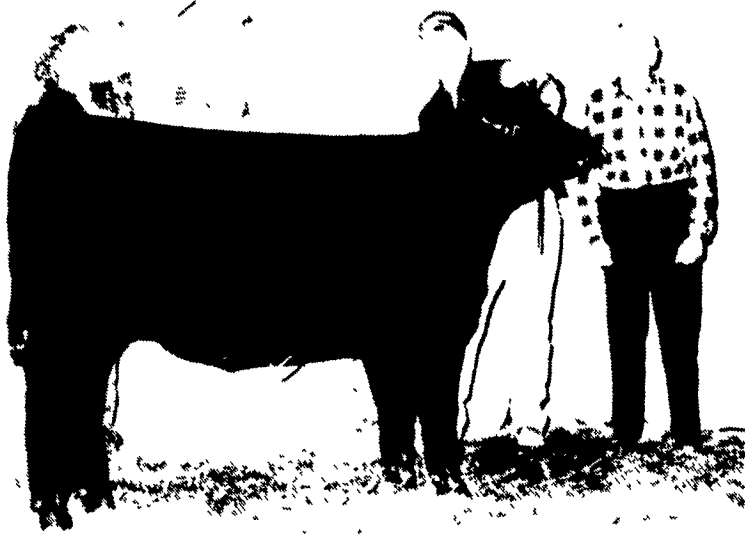


# Champions Named At Ohio Angus Show



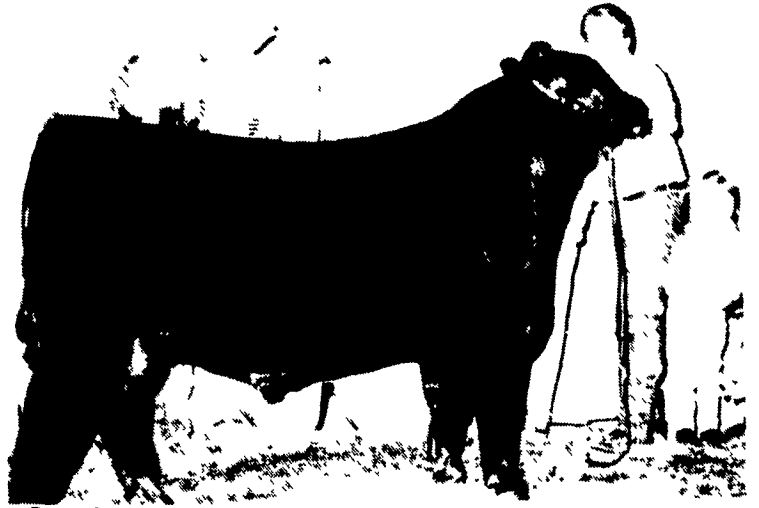
Sunset Valley Farm, Gallipolis, Ohio, exhibited this grand champion female at the 1996 Ohio Angus Association's Super Star Show and Sale in Columbus. The winning entry, S V F Sara 502, is a March 1995 daughter of O S U 6T6 Ultra.

ST. JOSEPH, Mo. — Judge Dick Hahn, Minonk, Ill., evaluated 45 bulls and 50 females that were consigned to the Ohio Angus Association's Super Star Show and Sale. The event was held recently at the Ohio State Fairgrounds in Columbus.

Top honors in the bull show were awarded to Maplecrest Fortunate Son, a February 1995 son of Minerts Fortune 2000. John Grimes, Hillsboro, Ohio, consigned the winning entry.

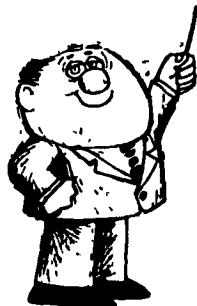
W L C Caesar 518 was the reserve grand champion bull. Work Land and Cattle Co., Uniontown, Pa., exhibited the February 1995 son of G D A R Oscar 771.

S V F Sara 502 took the grand champion female honors for Sunset Valley Farm, Gallipolis, Ohio. The March 1995 entry was sired by O S U 6T6 Ultra.



Grand champion bull honors went to Maplecrest Fortunate Son at the 1996 Ohio Angus Association's Super Star Show and Sale in Columbus. John Grimes, Hillsboro, Ohio, exhibited the February 1995 son of Minnerts Fortune 2000.

Champion Hill, Billwell, Ohio, consigned the reserve grand champion female, Champion Hill Star Shine 265. She is a June 1995 daughter of Bon View Emulation EXT 473.



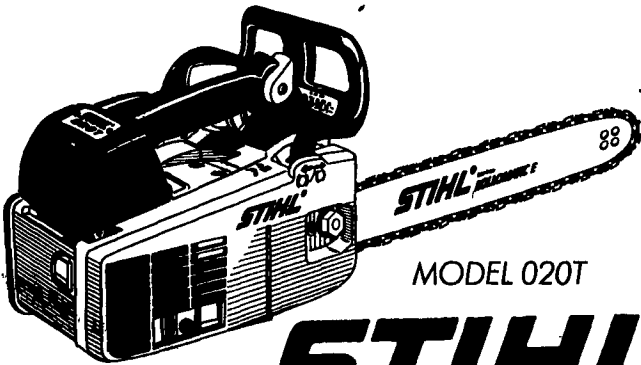
**A LESSON WELL LEARNED... LANCASTER FARMING'S CLASSIFIED ADS GET RESULTS!**



Susan Summers, right, was honored by the Maryland Angus Association for her work in the promotion of the Angus breed. Summers is the agricultural editor of the Frederick Post, which also received an award from Maryland Angus breeders for their coverage of agricultural events and news. Presenting the award to Summers is Dan Davis, New Windsor, Md., president of the Maryland Angus Association.

## BUILT TO HANDLE STIHL TERRITORY.

- Top Handle design
- Built in ring rope
- Excellent power/weight ratio
- Side access chain tensioner
- Lifetime ignition warranty
- Easy to reach controls



MODEL 020T

# STIHL®

Number One Worldwide

Available at these servicing dealers

**Airville**  
WOODBINE MOWER & SAW CO.  
1288 Woodbine Rd.  
717-862-3271

**Dallastown**  
TRI-BORO CONCRETE, INC.  
438 Locust St.  
717-246-3095  
1-800-632-9018

**East Earl**  
GOODS LAWN & GARDEN CENTER  
Route 23  
717-354-4026 Ext. 34

**Elizabethtown**  
MESSICK FARM EQUIPMENT, INC.  
Rheams Expt-Rt. 283  
Elizabethtown, PA  
717-367-1319, 717-683-8867

**Ephrata**  
WES STAUFFER ENGINES & EQUIPMENT  
23 Pleasant Valley Rd.  
717-738-4215

**Ephrata, Hershey**  
HOLLINGER'S LAWN & GARDEN EQUIP.  
Ephrata, Pa. 717-738-1131  
717-688-2710  
Hershey, PA 717-533-4060

**Gap**  
GAP POWER EQUIPMENT  
Corner of Rt. 30 & Rt. 887  
717-442-8970

**Hummels Warf**  
HUMMEL'S TEXACO  
Rt. 11 & 15  
717-743-7488

**Jonestown**  
BLUE MOUNTAIN ENTERPRISES, INC.  
Rt. 72 South  
717-865-2994

**Litz/Lebanon**  
BOMBERGER'S LAWN & GARDEN  
Litz: 717-626-3301  
Lebanon: 717-272-4155

**Loyville/Carlisle**  
GUTSHALL'S INC.  
Loyville, PA - Carlisle  
717-789-4343 717-249-2313

**Oxford**  
ENFIELD EQUIPMENT  
6800 Limestone Rd  
610-932-8858

**Palmyra**  
HERR'S REPAIR SHOP  
RD 2, Box 118A  
717-838-1548

**Palmyra**  
WEAVER'S LAWN & GARDEN  
740 W. Main St.  
717-838-5998

**Peach Bottom**  
A.K. SAW SHOP  
214 Peach Bottom Road

**Port Trevorton**  
IVAN MARTIN'S SAW SERVICE  
Rt. 1, BOX 889

**Reading**  
HAVER'S NURSERY & GARDEN CENTER  
4880 Parktown Ave. (Rt. 422E)  
610-778-6122

**Reamstown**  
EAGLE RENTAL CENTER  
Rt. 272, Reamstown Traffic Light  
717-336-3945

**Rising Sun MD**  
DENNY'S MOWER SERVICE  
238 Biggs Highway  
410-658-6267

**Ronks**  
A & B SALES & SERVICE  
370 Newport Road  
2 Miles South of Rt. 23  
Along 772 Thru Monterey

**Schaefferstown**  
MARTIN HARDWARE & EQUIPMENT CO.  
Rt. 801 1 1/2 Miles South of Schaefferstown, PA  
717-949-8817

**Shartlesville**  
MOUNTAIN VIEW SUPPLY, INC.  
(Formerly Shartlesville Farm Service)  
P.O. Box 629  
610-488-1025

**Shippensburg**  
LEINBACH FARM EQUIP.  
1120 Ritner Hwy.  
717-532-5511

**Tamaqua**  
CHARLES S. SNYDER, INC.  
RD 3  
717-386-5845

**Whiteford MD**  
ENFIELD EQUIPMENT INC.  
720 Wheeler School Rd.  
301-678-5090

## Bunker Silos



Precast Concrete Bunker Silos or commodity buildings built to suit your needs. Bunkers available in 8 Ft. or 12 Ft. High

**KEYSTONE CONCRETE PRODUCTS INC.**



4772 Basle Farmerville Rd., New Holland, PA 17557

(717) 355-2361

DISTRIBUTED BY KEYSTONE STIHL