



PRODUCE ♦ MARKETS

Cumberland Valley Produce Auction

Shippensburg, Pa.
May 16, 17 and 21

Report Supplied by Auction

APPLES: STAYMAN, RED AND YELLOW DELICIOUS 2.00-3.50 1/2 BU
APPLE CIDER: 1.30 GAL
ASPARAGUS 1.20-2.10 LB
BANANAS 8.00 BOX
BROCCOLI: 50-2.25 BOX.
CANTALOPES: 1.15-1.70 EACH
CAULIFLOWER: 2.00-4.00
CUCUMBERS 3.00-4.25 BU.
HONEY DEWS 80-1.05 EA
LETTUCE: 8.00-9.00 BOX
ONIONS 8.50-9.00 50 LBS, SPRING 12-52 BUNCH, SPANISH 6.50-7.50, COOKING 2.50-4.50.
ORANGES: 4.00
PEARS: ANJOU 3.00 1/2 BU
PEPPERS: GREEN 3.25-9.00 BU.
PINEAPPLES: .75-.85 EACH.
POTATOES: WHITE 1.50-4.25 50 LBS.
RADISHES: .25 BUNCH.
RHUBARB: 2.25-3.25 1 LB. BUNCH.
SPINACH: 3.00 10 LBS.
STRAWBERRIES: CALIF. 5.75-8.25 12 PINT FLAT; VIRG. 9.50-10.50 8 QT. FLAT.

SWEET CORN 4.75-9.00 CRATE
SWEET POTATOES: 6.50-7.50.
TOMATOES: 4.00-13.50 25 LBS.
WATERMELON 3.90-6.50 EACH
VEGETABLE PLANTS: BY THE FLAT, CUCUMBERS, EGGPLANT, PEPPERS, TOMATOES, PARSLEY, LOPES, SQUASH, WATERMELON, ZUCCHINI, HERBS, CABBAGE 1.00-7.00 FLAT
HANGING BASKETS: BEGONIA, FUCHSIA, GERANIUM, IMPATIENS, IVY GERANIUMS, PETUNIAS 10-12" 1.50-12.50
POTTED PLANTS: 4-6" POTS BEONIAS, COLEUS, DAHLIAS, DIANTHUS, DOUBLE PETUNIA, GERANIUMS, HOSTA, IMPATIENS, MARI-GOLDS, MUMS, PERENNIALS, PRIMROSE, ROSEMARY, SPIKE, VINCA, .04-5.25; FIELD DUG SWEET WILLIAM 3.50-6.00; 12" POTS DOUBLE PETUNIA 4.25.
VEGETABLE PLANTS: HERBS AND TOMATOES .30-1.80.
FLOWERS: BY THE FLAT, ANNUALS AND PERENNIALS 1.50-8.75.
SHRUBS AND TREES: AZALEAS 1.75-2.00; RHODODENDRON 5.00-15.50; ROSES 4.00-8.50; SPRUCE TREES 12.00-16.00.
SEEDLINGS; GRAND FIR .20;

SPRUCE .40-.5; YES .20.
SALE DAYS TUES., THURS., AND FRI. AT 10 A.M.

Leinbach's Shippensburg Produce Auction

Shippensburg, PA

Average Prices Of #1 Produce

May 16, 17 and 21

Price Differences are Quality, Size or Days

Open 10 a.m.

Report Supplied by Auction

APPLES: 2.50-4.50 1/2 BU.
ASPARAGUS: 1.00-1.25 12 OZ BUNCH, LOOSE 1.10-1.50 LB.
POTATOES: UNCLASSIFIED 50 LBS. 2.50-3.50
RHUBARB 50 BUNCH
SPRING ONIONS 35 BUNCH
VEGETABLE PLANTS BY THE FLAT, 2.00-8.50, ALL VARIETIES, BY THE POT, .25-.75
FLOWERS BY THE FLAT, ALL ANNUAL VARIETIES, 4.00-8.50, ANNUALS BY THE POT, NON-STOP NEW GUINEA IMPATIENS 1.25-2.50; PERENNIALS BY THE POT 1.00-2.50, GERANIUMS 4-6" POTS 1.00-2.25
HERBS: .50-1.50 POT
HERBS AND PERENNIALS. BY THE FLAT 5.00-12.00.
HANGING BASKETS: 10" MIXED ANNUAL VARIETIES 5.00-8.00, PERENNIAL 6.00-14.75, 10" FUCHSIA 2.50-7.00; GERANIUM 4.50-6.75

MIXED PLANTERS: SM. TO LRGE 2.00-20.00 EACH.
SHRUBS. ALL VARIETIES, SMALL TO LARGE, 2.00-10.00; RHODODENDRONS SM. TO MED. 6.50-7.50, AZALEAS, SM. TO MED. 2.00-5.50.
FLOWERING TREES: SM. TO LRGE. 7.50-22.00.
SHADE TREES: MED. TO LRGE. 2.00-7.50.
SEEDLINGS: PINE .05-.28 EACH.
SOUTHERN PRODUCE
CANTALOPES: 1.00-1.85 EACH
ONIONS: 12.00-14.00 50 LBS
POTATOES: NEW 10.00-12.00 50 LBS
TOMATOES: 7.50-14.50 25 LB BOX
STRAWBERRIES: 10.00-14.00 FLAT
WATERMELON: 3.75-5.00 EACH, 20-25 LBS
SALE DAYS ARE TUES., THURS., AND FRI. AT 10 A.M

RHUBARB .25-.75 LB.
SPRING ONIONS: .14-.42 BUNCH.
TOMATOES: HYDRO/SOIL .95-1.60 LB.
RADISHES: .30 BUNCH.
BEDDING PLANTS: BY THE FLAT, 2.00-8.00; BY THE POT, .10-1.10; GERANIUMS .30-1.70; MARTHA WASHINGTON 3.50.
HANGING BASKETS: 1.00-8.00.
HERBS: BY THE FLAT 1.00-4.00, BY THE POT .25-.60.
PERENNIALS: BY THE FLAT 2.50-8.50, .10-4.00 POT.
VEGETABLE PLANTS: BY THE FLAT, 1.00-12.50; BY THE POT, .15-1.75.
TOMATO PLANTS: BY THE POT 20-1.20.
FLOWERS: BY THE POT, GLOXINIA 1.30; DAHLIAS .35-.70, VIOLETS 1.50
NURSERY STOCK: ARBORVITAE 2.00-6.50; AZALEAS 1.00-7.00; JUNIPERS AND YEW 2.00-7.50; LILACS 2.25; RHODODENDRONS 6.00-13.50; ROSE BUSHES 4.00-7.50; RASPBERRY PLANTS .25-.40; SHRUBS 2.00-9.50; FORSYTHIA 2.00-3.50.
TREES/EVERGREENS: 5.00-35.00.
BIRDHOUSES: 3.50-5.50.
PLANTERS: FILLED 3.00-25.00.
POMPONS: 22.50.
OPEN EVERY TUES. AND THURS. 9 A.M.
HAY, STRAW, AND FIREWOOD AUCTION SATURDAY AT 9:00 A.M

Kutztown Produce Auction

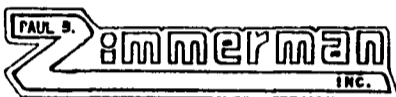
Fleetwood, PA

May 18-23

Hay and Straw at 9:00 a.m. Sat. followed by produce

Report Supplied by Auction

ASPARAGUS: 1.20-2.05 LB.
EGGS: 40-.90 DOZ.
LETTUCE: HYDRO 6.00 CASE.
POTATOES: 1.00-3.00 50 LBS.



FEEDER WAGON WITH HEADLOCKS

Featuring 24 Zimmerman adjustable headlocks for animals 10 months and older. Coated with Baked-On Top-Grade Polyester TGIC Powder Mounted on 5'x20' trough with adjustable tongue



FEATURES: FARMCO FEEDER WAGON

- 15 implement wheel (6 bolt)
- 2 jacks on front corners for added stability

FEATURES: ZIMMERMAN HEADLOCKS

- Spring loaded neck bar for easy removal and adjustment
- Individual lock on each yoke for retaining individual animals

LAPP'S BARN EQUIPMENT

5935 OLD PHILADELPHIA PIKE, GAP, PA 17527

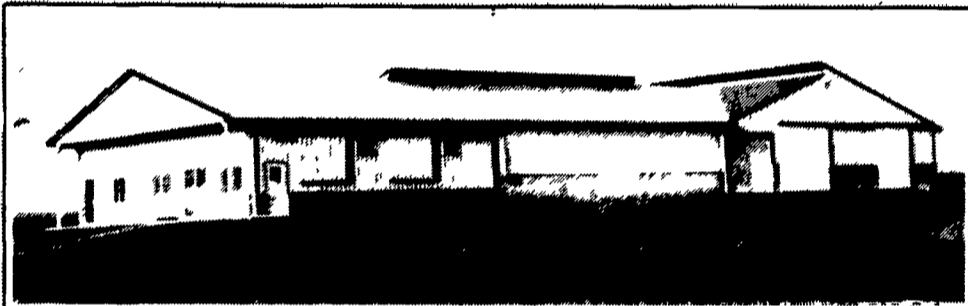
PHONE: 717-442-8131

WE SERVICE WHAT WE SELL

— Radio Dispatched Trucks —



477 East Farmersville Rd.
New Holland, PA 17557
(717) 355-2361



Concrete Slatted Free Stall Barn



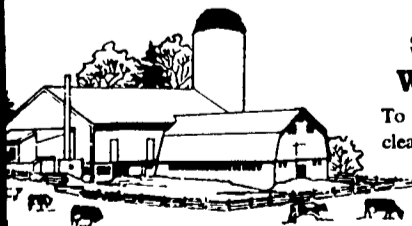
Long Core Cattle Waffle Slats

WHITEWASHING with ADVANTAGE FARM WHITE

- DRIES WHITE • NO WET FLOORS
- IS COMPATIBLE WITH DISINFECTANT AND FLY SPRAYS
- DOES NOT RUB OFF EASILY
- WASHES OFF WINDOWS & PIPELINES EASILY

BARN CLEANING SERVICE AVAILABLE WITH COMPRESSED AIR

To have your barn cleaned with air it will clean off dust, cob webs & lots of the old lime. This will keep your barn looking cleaner & whiter longer.



CALL US ABOUT ON THE FARM FLY CONTROL

Serving Southeastern Pa. And More

BEITZEL'S SPRAYING

Witmer, PA 17585 717-392-7227 or

Toll Free 1-800-727-7228 7:00 AM to 5:00 PM

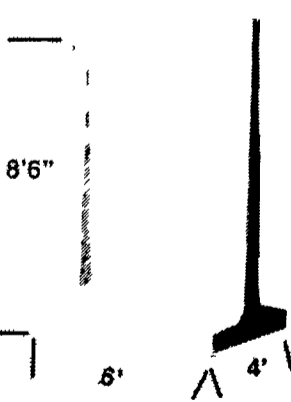
CERTIFIED COMMERCIAL APPLICATORS

LICENSED 32 Years Experience INSURED

5 Trucks For Air Cleaning And Whitewashing
RADIO DISPATCHED TRUCKS

Barn Spraying Is Our Business, not a sideline.
Spraying Since 1961

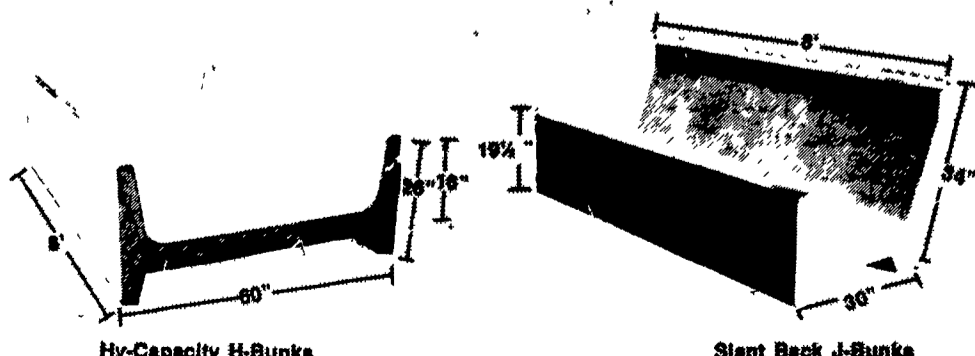
Outside T-Wall Bunker Silo Sections



12 Ft. High Wall Available For Outside Or Center Divider



Slatted Beef Barn



Hy-Capacity H-Bunks

Slant Back J-Bunks

End Sections Available For Feed Bunks

Give us a call for more information on hog, beef, dairy and helper barns.