

'90 Ford XLT E350 club wagon, 15 passenger, 351 EFI, auto, PS, PB, PW, PDL, cruise, tilt, dual air & heat, AM-FM cassette, blue & silver, 57,000 miles, new radials, \$11,900. 717-733-2873

NEWAY Pusher Axle, 20,000lb, 15" rubber, good condition, \$1100. 717/949-3582.  
Phillips Stock Trailer, excellent condition, \$1,800. (800)443-9580.

TRUCK PARTS: Rockwell 44 rears, 5.29 ration, \$2500  
Many other rears. Motor trans body parts  
HAP'S TRUCKS & PARTS  
1-800-839-3338  
Fax 610-944-0578.



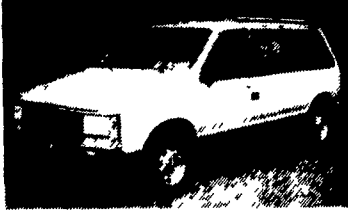
**94 GMC 3500 SIERRA SL**  
Cab & Chassis, 5.7L FI V8, AT/OD, PS, PB, 11,000 GVWR, 60" CA, Red, 43,000 Mi.  
**\$14,900**



**88 CHEVY C-30 BOX TK**  
350 V8, AT, AC, PS, PB, 10,000 GVWR, Dock Height Liftgate, 12 Ft. Box, Gray  
**\$9,800**



**93 CHEVY BEAUVILLE VAN**  
V8, AT/OD, AC, Tilt, Cruise, PW, PDL, ABS, PS, PB, Red  
**\$11,900**



**89 DODGE CARAVAN SE**  
Turbo, AT, AC, 7 Pass., Silver  
**\$4,995**



**91 PLY. GRAND VOYAGER SE**  
3.3L FI V6, AT/OD, AC, ABS, Airbag, Tilt, Cruise, 7 Pass, Black  
**\$8,900**



**88 FORD CLUB WAGON XL**  
E350, 12 Pass., 5.8L V8, AT, PS, PB, Blue  
**\$5,900**



**PINE TREE MOTORS**

Rt. 322 & Clearview Road, Clay  
Lancaster Co., PA  
717-738-2242

**20 Ton Lacross Tag-a-long**  
Good Cond., Very Good Tires  
**\$6,000**

**(410) 557-9559**

— No Calls After 9:00 P.M. —

- 95 Ford Aerostar XLT Ext. 7 Pass, White V6, AT, AM-FM Cas., AC, PW, PL, CC, Air Bag, 38,488 Mi. .... **\$14,500**
- 95 Chevy S-10 LS P.U. Black, 4 Cl., 5 Spd., AM-FM Cass., CC, Airbag, 20,615 Mi. .... **\$9,500**
- 94 Ford Taurus GL 4 Dr, Maroon V6, AT, AM-FM Cas., AC, PW, PL, CC, Dual Airbags, 63,617 Mi. .... **\$8,900**
- 94 Ford Tempo GL 4 Dr., Lt. Green, 4cl AT, AM-FM Cas., AC, CC, 61,067 Mi. .... **\$7,900**
- 94 Mercury Villager GS 7 Pass, Tan, V6, AT, AM-FM Cas., AC, PW, PL, CC, 53,142 Mi. .... **\$13,500**
- 93 Pontiac Grand Prix SE 2 Dr. Black, 3.1 V6, AT, AM-FM Cas. AC, PW, PL, CC, Pwr. Seat, 58,479 Mi. .... **\$10,900**
- 93 Chevy Lumina Z-34 Black, 3.4 V6, AT, AM-FM Cas., AC, PW, PL, CC, CD, 54,796 Mi. .... **\$10,900**
- 90 Geo Storm GSI, Blue, 4 cl. 5 Sp., AM-FM Cas., AC, 54,796 Mi. .... **\$5,900**
- 90 Mercury Cougar LS 2 Dr., Black, V6, AT, AM-FM Cas., AC, PW, PL, CC, 58,268 Mi. .... **\$6,900**
- 89 Chevy 2500 Cheyenne 4x4 PU, Red, 4.3, V6, AT, AM-FM St., 113,114 Mi. .... **\$7,800**
- 89 Ford Ranger XLT 4x4 Red/Gray V6, AT, AM-FM Cas., AC, 67,979 Mi. .... **\$7,600**

**Brubaker's Auto Sales**  
Myerstown, PA  
717-866-5237



1979 IH 1954 DT 486 - 5+2 spd. - 25,000 GVW (NO CDL) 20 ft Van body, Inspected, very clean **\$7,500**



1991 FTR Isuzu, diesel - 6 spd. - 26,000 GVW (NO CDL) 18 ft FRP body, Like New



1986 C30 Chev. - V8 - 4 spd. - 9 ft. Omaha Dump - 10,500 GVW - Super Clean  
**\$7,900**

**Martin's Used Trucks & Equipment Inc.**

560 Lampeter Rd.

Lancaster, Pennsylvania 17602

**(717) 299-6200 •**

**(717) 392-6266**



**1995 Ford XLT F250, Super Cab,**  
2WD, 7.3 Litre Power Stroke, Diesel, PS, PB, PW, PDL, Cruise, Tilt, Air, AM-FM Cass., 8,800 GVW, Less Than 2,000 Miles With Bal. of Factory Warranty, Like New, Blue  
**\$23,500**

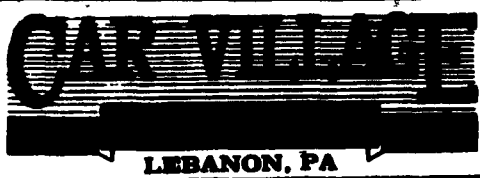
**A&J Auto Sales**

798 E. Main St., Ephrata, PA 17522  
**717-733-2873**

Nicest Pre Owned Trucks Anywhere!

**RTE. 422 WEST LEBANON, PA**

(Across From Lebanon Valley Mall)



**PHONE 717-274-2000**

Business Hours  
Mon-Thurs 9-9  
Fri 9-6  
Sat 9-4

**SPECIALIZING IN HEAVY DUTY TRUCKS**



**POWERHOUSE POWERSTROKE**  
95 FORD F-250 XLT Runs Strong - H.D., 5 Sp., A/C, XLT, Almost New, Only 2,500 Miles, All New Truck Warranties



**REAR LEFT GATE 89 CHEVY CUBE VAN**  
1,000 lb. Lift Gate Capacity 12 ft Aluminum Box 350 V8-Auto



**4x4 SUPERCAB 92 FORD F-250**  
XLT H.D. Suspension, 351 FI V8, AT, A/C, 43,200 Miles, 2 Tone Paint



**4x4 1 TON 94 FORD F-350 XLT**  
Turbo, 7.3 Diesel, AT, A/C, Big Swing Out Mirrors, 4:10 Gears, 55,300 Miles



**CENTURION CONVERSION 94 FORD F350 CREW CAB** Dually A Dream Truck Turbo Diesel, AT, A/C, Every Conceivable Option Known To Man. Beautiful Paint, 4:10 Gears, Great Tow Machine, Only 5,000 Miles



**DIESEL CARBO VAN 96 FORD E-350**  
Powerstroke Turbo Diesel, AT, A/C, Only 500 Miles, Like Brand New, New TK Warranty



**TURBO POWER 95 CHEVY 2500 SILVERADO**  
Awesome 6.5 Turbo Diesel, AT, A/C, Heavy Duty 8800 GVW, 4:10 Gears Great Truck to Tow With



**WOW 85 FORD F-250 XL**  
4 Wheel Drive, Diesel Power, H.D. 4 sp., 4:10 Gears, Excellent Body, You Gotta See This One



**4x4 6.5 TURBO DIESEL 95 CHEVY - E-2500** Heavy Duty Suspension, AT, A/C, Heavy Duty Trailing Pkg., Low Miles, Fabulous Driver



**L-PAK DUMP 90 FORD SUPER DUTY**  
7.3 Diesel Auto A/C Tow Pkg Big 14,500 GVW



**FARMERS FLATBED 94 FORD F-350**  
12 ft. Flatbed, Removable Stake Sides, 381 V8, 4 Sp., **\$6,900**



**400 4x4 88 FORD F-250 XLT** 67,000 Miles - Big & Strong 480 V8, AT, A/C, Tow Pkg., Very Nice Body & Paint



**4x4 DODGE CLUB CAB 88 DODGE 250 LE** Hard To Find Cummins Turbo Diesel, AT, A/C, 37,000 Original Miles, Very Rare, Very Nice



**4x4 DUMP 95 FORD F-350 XL**  
Ready to Work, Strong 480 I.I., Auto, Limited Slip, 4:10 Gears, only 19,000 Miles



**DODGE DIESEL 4x4 94 DODGE 2500 4x4**  
Hey it's a nice one only 22,200 miles Turbo Cummins Auto A/C Tow Pkg Factory Warranty



**4x4 UTILITY 94 FORD F-350**  
Ready and Willing to Work - 6 ft. Utility in Excellent Condition 480 F.I., AT, A/C, Pentil Hitch



**WORKING MAN'S SUPERCAB 88 FORD F-250** Custom Heavy Duty Suspension, 381 V8, Auto, Excellent Body **\$12,900**



**4x4 DUMP TRUCK 96 FORD F-350**  
This One Has It All Only 350 Miles, Powerstroke Turbo Diesel, L-Pak Utility, Power Angle Snow Plow New TK Warranty



**SUPER CAB DIESEL 4x4 95 CHEVY 2500 SILVERADO**  
6 Ft. Shortbed, Only 11,000 Miles, 6.5 Turbo Diesel, Auto, A/C, All The Toys, Class 3 Hitch



**GAS 3/4 TON 4x4 94 FORD F-250 XL**  
Heavy Duty 8800 GVW, 381 FI V8, Auto, A/C, Post 4:10 Gears, Meyers Power Angle Plow, 25,200 Miles



**4x4 DUALLY DODGE 94 DODGE 3500**  
SLT LARAMIE Cummins Turbo Diesel, AT, A/C, All Power Equip., Tow pkg., Very Clean & 33,842 Miles



**SNOW FIGHTER 95 FORD F-350 DUMP**  
Work it from both ends Meyers Power Angle Plow & Salt Spreader, 480 F.I. H.D. 5 Sp. 4:10 gears, only 7,000 miles A Money Maker



**3800 H.D. DUMP 95 CHEVY**  
6.5 Turbo Diesel, AT, Only 17,000 Miles, 10 ft. Dump Body, Tool Box, Hitch & Tow Pkg. New TK Warranty



**4x4 SUPER CAB 92 FORD F-250 XLT**  
Heavy Duty Suspension, 381 I.I. V8 Auto A/C Bench Seat, only 43,000 Original Miles



**1 TON 4x4 88 FORD F-350 XL** 381 V8, Auto, A/C, Solid Front Axle, Ready for the heavy Job