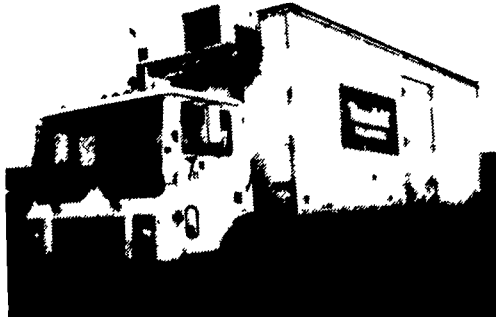


1989 Int. Rebuilt 400 Cummins 13 Spd. Doubled Frame Ready to Work  
**717/273-7474**



1982 Mack M.R. Tandem Rebuilt Motor 5 spd. Ready to Work.  
**610-944-9871** After 6:00

F350 Utility vehicle, 1984, ladder racks and tool boxes attached, mechanically sound, \$1800 OBO. 717/673-5555 leave message.

Coal trucks: '50 Dodge, '64 International, '52 International, \$1500/ea. Bill Styer 208-883-8719 afternoon or evenings.



1984 Volvo White, Cab-over 350 Cummins, 9-Speed, P.Steering, Air-Cond.; 1987 24x8 Eby Livestock Trailer, Air, Over Hydraulic Brakes  
**\$19,000 — 717-529-2831**

'88 Chevy C30 single rear whl w/9' Reading utility body, 292 6 cyl., HD, 4 spd, PS, PB, AM-FM, 9,000 GVW, 63,000 one owner miles, dark blue, \$7,900 717-733-2873

'88 GMC 2500, 3/4 ton, 350 5 spd, PS, PB, air, 7,200 GVW, 50,000 miles, one owner, new radials, \$7,900. 717-733-2873

'89 FORD XLT Lariat F250, super cab, 460 EFI, auto, PS, PB, PW, PDL, cruise, tilt, air, AM-FM cassette, 8,800 GVW, towing package, 1 owner, excellent condition, \$10,995. 717-733-2873

'89 Ford XLT Lariat, F150, super cab, 302 EFI, 5 spd, PS, PB, air, AM-FM, dual tanks, 64,000 one owner miles, new radials, blue, excellent condition, \$9,900. 717-733-2873

'89 GMC 3500, dual whl, cab & chassis, 60" CA, 350 HD, 4 spd, PS, PB, AM-FM cassette, dark blue, 79,000 miles, \$7,900 717-733-2873

'90 Dodge 150, 1/2 ton, 318 EFI, auto, PS, PB, AM-FM, 41,000 one owner miles, new radials, excellent condition, \$7,900 717-733-2873

Ford 250 pickup, extended cab, 1982, \$1850 717/354-3105.

For sale: 1984 International 'Eagle' 9670 cab-over, app. 65,000 miles since overhaul. 13 speed transmission with overdrive, 11.00X24.5 tires, air, ride 'Dorsey Trailer' aluminum 42'; flat with 'complete' side kit. (new tarp) air ride, one owner, (retiring) Phone (717)273-7203.

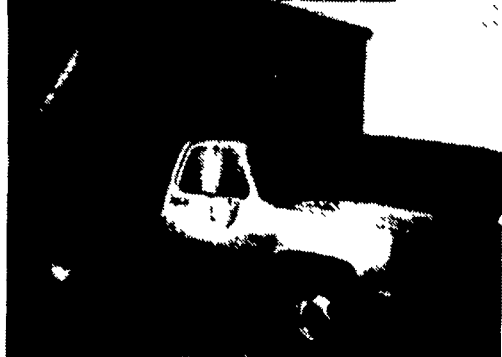


1988 Kenworth 350 Cummins, Jake 9 spd., 3:55 rears, P/S, air; Air Ride 11:R22.5 tires, wetline. Good condition. \$25,000  
1992 Alumatec Dump Trailer, 38 ft. frameless, roll tarp, 2 way gate, coal chute, spring ride. Trailer weighs 9800 lbs. Good condition. \$22,000  
**717/658-4466 Anytime**



Van Body — 22 ft. Morgan, 13'6" x 102", pneumatic rollers in floor, roll-up and curbside door, nice  
**717-546-5574**

**FOR SALE**



**1984 CHEVROLET C30 DUMP TRUCK**  
Rebuilt Engine  
**\$6,900**  
Call **717-866-2246**  
No Sunday Calls

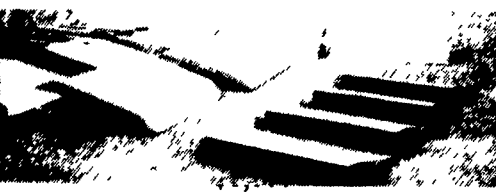
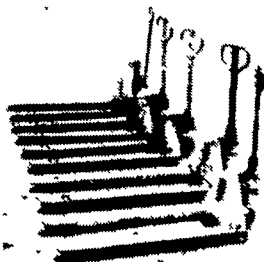
**KEENS**

SERVICE, INC

- Sales
- Service
- Rentals
- Leasing

Lititz, PA  
**(717) 626-5420**  
"Since 1963"

**PALLET JACKS AND ALUMINUM DOCK PLATES IN GOOD CONDITION**



**SELLING!!!**

**T/A R MODEL MACKS**

\* (1) 83, (2) 84, (2) 85, (1) 86

\* 300'S W/6SPDS 350 W/8 SPDS

\* P.T.O.S & WETLINES

\* ONE OWNER W/DOCUMENTED MAINTENANCE RECORDS

\* NICELY EQUIPPED & ROAD READY

CALL DAVID YERGER FOR DETAILS  
717-733-6556

**L.R. SUMMERS TRUCKING INC.**

OUR SPRING FLEET UPDATE

OUR SPRING FLEET UPDATE

YOUR BEST BUY!

YOUR BEST BUY!



**BOWERS USED CARS INC.**

Route 30 West of Abbottstown, PA  
7015 York Rd. **717-624-7072**



**85 CHEV CREW CAB**  
1 Ton Dump - 350 V-8  
4 Speed PS PB  
53,000 Miles  
**\$9,500**



**88 CHEV 4X4 CHEYENNE**  
V-8, Auto, PS & PB,  
Nice, 101,000 Miles  
**\$8,995**



**1990 Mack CS200P, 18' Van Truck**  
6 Cyl Diesel 5 speed, PS, GVW 25,000  
**\$11,900**



**85 INTERNATIONAL S1600 CAB & CHASSIS**  
Diesel, 5 Spd., PS, PB, 95 Miles  
Real Nice Condition!  
**\$8,995**



**92 FORD E-350 ECONOLINE**  
V-8, Auto, PS, PB  
85,000 Miles  
**\$10,900**



**93 FORD F350 CREW CAB DUALY**  
7.3 Diesel, Auto, PS, PB, AC Loaded, Sharp  
**\$19,900**



**1990 GMC 3/4 ton 4x4 Suburban**  
350 V-8, Auto, PS, AC, PB, Mint Cond., Over in Miles  
**\$9,995**



**1992 Ford Explorer XLT 4x4**  
Loaded, Mint Cond.  
**\$13,900**

**INTERSTATE TRAILER SALES**

**Huntingdon Equipment**

Rentals Available

**GOOD USED EQUIPMENT**

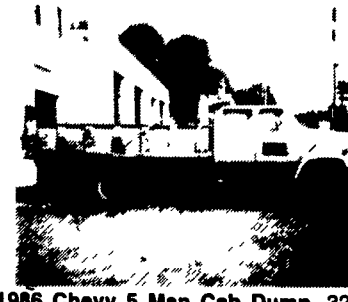
Huntingdon Valley, PA • **215-672-9667** • **1-800-543-3833** • Eddie



**Vermeer M-470 Trencher with backhoe.**  
This is one of six units we have all ready to work. Starting at \$4,500.



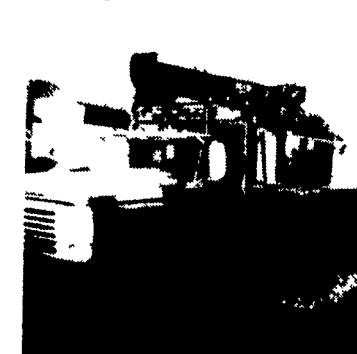
**1985 F-600 8.2 Diesel, Auto, 5 Man Cab, Utility With Rollup Door On Rear, Clean, Low Mileage, 1 Left. Priced To Sell!**



**1986 Chevy 5 Man Cab Dump, 3208 Cat - 5/2, Air Brakes. Dump with Lift Gate. Dump 14' Long, GVW 34,000 pounds.**



**Pitman Boom with jib 15,000 pounds cap - 4 outriggers. Sale Price \$8,250.00 Won't Last Call Now!**



**Need A Lift? We Have A Large Selection Of Boom Trucks Up To 14,000 lbs. Cap. Some With Post Diggers.**



**Bucket Trucks 28' to 65' Gas and Diesel. Call For Details.**

**DIGGER DERRICKS/AERIAL BUCKETS/UTILITY EQUIPMENT**