

1974 Diamond Reo, PS, air brakes, 36,000GVW, 18' dump grain body (610)779-3284

1974 Dodge Pickup 1/2-ton, 3-spd Hurst, V8 360, runs, rough condition, good rubber, inspection exempted 1 year, \$750; lift gate, electric over hydraulic, at least 1000lb capacity, \$500. Lanc Co. 717/733-4313.

1975 Ford C750 tandem rollback, \$4850 OBO; 18' pintle hook trailer, 6 ton, \$1000 OBO 410/239-0579

1978 International dump, DT318, 5+2, 27,500 GVW, air, 87K miles w/85 9-ton tri-axle trailer, \$7500 for both. 1985 Ford F700, 22' stake body, 24,500 GVW, 88K miles, \$7500. 1987 Ford F250, 4x4 Supercab, cap, 105K miles, \$8200 GREEN HORIZON FARM, 100 Guy's Lane, Bloomsburg, PA 17815 1-800-553-6778

1979 Trailmobile tri-axle single drop, 40 ton capacity 201-383-9265

1980 Int 1854 diesel DT466 w/18' flatbed dump 28,000#, \$9500, 1977 Chevy V8 gasoline w/14' flatbed dump 30,000#, \$2900; 1981 Chevy step van gasoline engine w/14' Gruman body, \$1900 717/354-4911

1980 Mormon tractor, Cummins, cab over, 13 speed, Lancaster County, (717)367-2117

1982 model 60 Chevy cattle truck, 18' wooden box body all rebuilt (717)756-2646

1982 S1700HC 20' Refer 28,000GVW, very good condition, \$6,000 (717)388-2495

1983 Ford F150, 4x4, 302V8, 4-speed, AM/FM, 116K, runs good 717-529-6744.

1990 IH Tandem 16' chassis double frame, 16 front + 40 rear, 13spd, 245hp, \$25,900.; 717/859-3168.

1990 Peterbilt, 377, 400Cummins, 13spd, 60' bunk, very good condition (717)328-2971.

1991 Dodge Duely pickup, cummins with 5 speed, loaded 58K. Tow package with 5th wheel setup. Excellent cond, \$16,500 Lanc. Co. (717) 627-1210.

1991 Ford F150 XLT Lariat 4x4, super cab, cap, 5.8L, a u t o 63,000 miles, loaded. Days 717/362-8117, nights weekends 717/362-3678 Steve

1991 Maxi grinder, \$75,000; 4 walking floors, 80-100 cu yds Call for prices (201)867-4587

1993 24' Gooseneck flatbed trailer, 20,000lb GVW, \$5200 OBO 717/732-8828.

1989 White GMC, WIA64TES, NT88 Cummins engine, 365hp, RTO14609 trans, air ride, aluminum wheels, 11R24 5 tires, asking \$28500. 1982 Peterbilt cabover, NTC400 big cam, RT14609 w/4 spring suspension, low profile tires, 24.5, \$5000; 1981 IH 4700B w/350 Cummins big cam, 10 speed, 40,000# rears on 4 spring, 11R24.5 tires, \$7000; 1972 Autocar dump truck, 10-wheeler, 1673 CAT, RT009513 trans, 46,000# rears, 11-24 5 tires, 15' steel body, \$10,500; 1983 Great Dane reefer, 44', SS, Thermo King 30 Super unit, 11-24.5 Budd tires, \$7500 302-934-8506 8AM-9PM

1990 GMC Topkick western hauler, 366 gas engine, 110,000 miles, excellent condition mechanically and appearance, \$23,000 OBO. (412)586-7109.

1983 International S2275 single axle truck tractor, 270hp, Cummins, 7-speed Spicer. Will trade on tandem dump. 814-667-3663

1984 Chevy welding truck, 454 motor, 4spd. trans, 1989 Ford diesel alum van, 1 ton, good cond; 1972 Ford roll back F800 truck, CAT motor, 5 speed trans, straight rear; 1981 Mack MR Mack long wheel base, 237, 5 speed, 44 rears; 1974 RD long wheel base, tri-axle; Allis Chambers tow truck, good condition. Many other truck and truck parts for sale 610-286-5172.

1994 Bumper Pull Trailer, 19'X88" Flatbed, Tandem 6000Lb. Axle w/Electric Brakes, Removable Size, Custom Fit Tarp Cover, 2000Lb. Hydraulic Liftgate \$4000 OBO (301)373-5162

1996 F-350 crew cab, 4X4, power stroke diesel, white/gray, all possible options, 8,000 mi., \$29,900 (717)865-5621.

85 Volvo White, 400 Cat, 13-spd, air ride; 89 Gilmore dump trailer, 34x32, triaxle, air ride, roll-over tarp. 215/257-3852.

'86 Ford F250 XLT, diesel, auto, 130K miles, excellent mechanical, body dented, inspected, w/or without insulated produce box, \$4600 OBO 410-398-4313 evenings.

87 Kenworth dump T800, aluminum body 65,000GVW; Case 1150 crawler/ loader (410)692-9314.

'87 Mack tandem tractor, 300, 6 speed, good rubber, 187"WB, \$7500 717-768-8647

'88 Chevy 2500, 3/4 ton, 350 HD, 4 spd, PS, PB, air, AM-FM cassette, 7,200 GVW, 40,000 original one owner miles, dark blue, excellent condition, \$8,300. 717-733-2873

(2) 1984 MS300 Mack Midliners, Alician Auto. Trans., Air Brake, Cabin Chases, \$4,000ea./obo; 1987 MS300 Mack Midliner, Auto. Trans., Cabin Chases, 4 Parts, B.O (410)235-1066 Ext.284.

(2)42' 1979 Fruehauf refer trailers with Thero-King SNWD diesels, good running condition, \$2,400 Rollup doors. (717)892-4704.

(2) 1970 6x6 10 ton military tractors, 65,000 lb. Mack rears, Cummins 300 V-8 diesel, 25,000# winch. 1,086 & 1,675 original miles. Gov't never used these trucks. Turnkey, ready for work. \$11,000 negotiable. (410)679-1071 (410)515-2538.

'73 Ford 20' flatbed, rebuilt 361 gas engine, used as haytruck, good condition, \$2500 OBO. Franklin Co. 717-530-8260.

78 Ford Feed Truck, 671 Detroit, 5+2 trans, 18' alum. Fontain, 4 compartment, used very little last 7 years. Will separate. As is \$9500. Feed box \$7500. 540/342-8285.

79 F-350 4X4 pick up truck w/8' snow plow, \$2000; 89 Dodge dually pick up bed, \$400. (717)677-8789.

84 Int 9670, 350 Cummins, 13spd., Jake, a/c, 11R22.5, 42' Traco drop deck trailer, 3' hay tailgate, ex. tires on both, \$11,000/obo (814)267-5963

85 Ford 250 Centurion diesel, auto., dual wheel, crew cab, 5th wheel and class 3 hitch, elect. brakes, fully loaded, \$9500, 215/536-8624.

'85 Ford F-350 4DR. Dually, 6.9 diesel, auto, PS, PB, air, CC, AM/FM cassette, 114,000 miles, bedliner w/mat, w/cap, needs nothing, excellent cond. \$10,500. (609)455-5605.

1989 Ford Econoline custom hi-top van, full power 302, auto 65,000mi, excellent condition, \$6,500. (717)388-2495.

1989 Peterbilt, 379, long hood, tri-axle dump, 425 Cat, 8LL trans, 46 rears, 19 1/2' alum. Ravens, 72' sides. 717/875-4946.

'94 Ford XL F150 HD, 300 EFI, 5 spd, PS, PB, AM-FM, dual tanks, 6,250 GVW, new radials, excellent condition, black, \$9,900. 717-733-2873

'94 Ford XL HD F250, 3/4 ton, 300 EFI, 5 spd, PS, PB, AM-FM cassette, dual tanks, 8,600 GVW, 38,000 miles, dark blue, \$11,900. 717-733-2873

'95 Ford Super duty, powerstroke diesel, 5 speed, PS, PB, Am/Fm, air, dual tanks 12' stake with dump, radial tires, rated at 15,000 GVW, HD hitch. Just broke in at 2,000 miles, includes full warranty. \$25,500 or assume payments (410)374-1261.

'82 Chevy Tahoe S10, ext cab, V6, 5 spd, PS, PB, AM-FM cassette stereo, 30,000 miles, red & silver, excellent condition, \$8,975. 717-733-2873

9' Eby alum. livestock cattle body w/double deck rail and alum. flooring. (717)349-7281.

Brockway Tri-axle dump, 18' alum. body w/6' sides, 0 miles on rebuilt motor, must sell, best offer; 908/617-1658.

1995 Chev Gruman Stepvan, 1 Ton, 14', 350 Eng., AT, Stock #2127

1994 UD 2600, 24' Box, 6 Cyl., Turbo Diesel, 26,000 GVW, 210 HP, 6 Sp. Manual, 44K Miles Stock #2139

1985 IH 1600, Cab & Chassis, New 6.9 Turbo, 5&2 Trans., Takes 18' Bed, 22K GVW Stock #2174

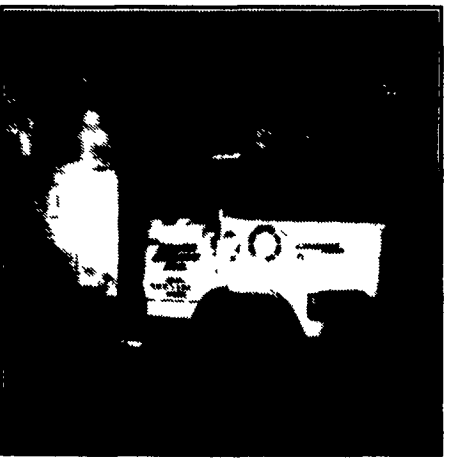
1993 Iauzu NPR Reefer, 14' 4 Cyl. Turbo Diesel, AC, AT, GVWR 14,250, 8,500 Tare, Ribbed Floor, CBI Thermo King Stock #2145

Wheeled Coach Ambulance Type III 1994 Ford E350 XL, 7.3L Diesel, Auto. O/D, 138" W.B., 10,500 GVWR, 12,400 Miles, 72" Inside Height Invertor, Bat. Charger, Dual AC/Heat

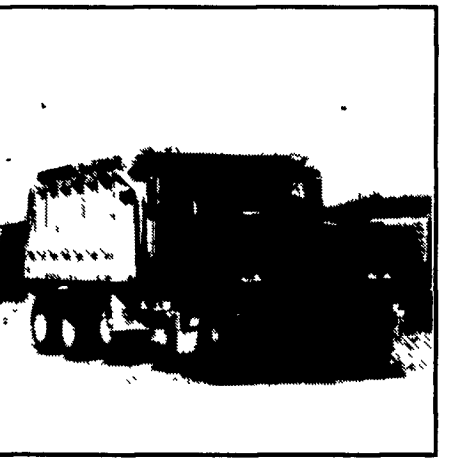
**717-354-3199**



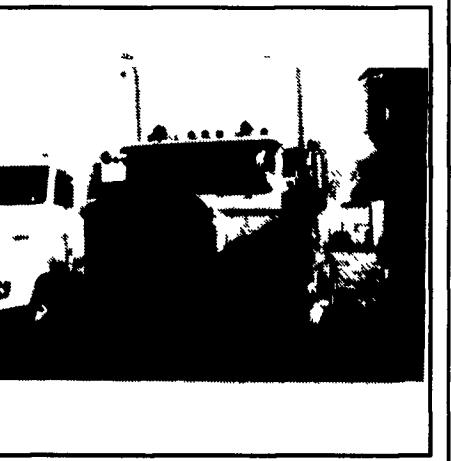
1981 Pete Cabover 3406A, 400 HP 13 SP Long W/B Roof Fairing Nice, Local Truck \$9,000



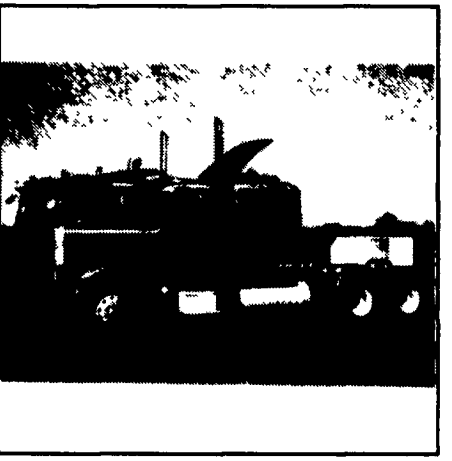
1991 Ford LA8000 with 60" Sleeper, Single Axle, Air Ride, 270HP, 215 W/B 430,000 Miles, One Owner \$16,000



1987 Volvo White Tri-axle 444 Cummins, 380,000 Miles, 13 SP, Jake, Ravens 17'6, 25,000 Lightweight Alum. Wheels, One Owner \$38,000



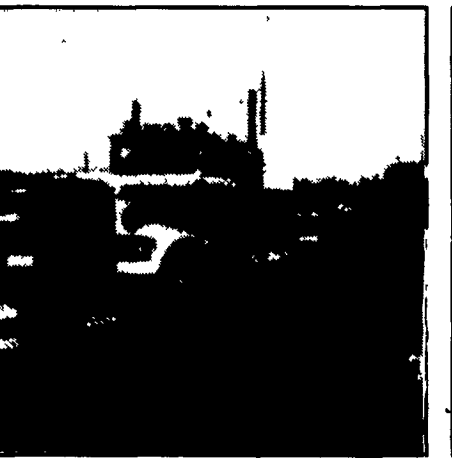
1987 Freightliner 3406B 425 CAT Jake, Air Ride 48" Bunk Setback Axle, Alum Tanks, Alum Wheels, 13 Sp Trans., 196 W/B Priced To Sell



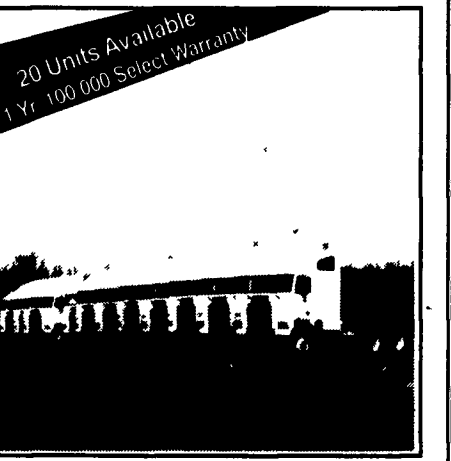
1986 Pete Conv. 359 3406B Fresh Overhaul, 15SP Trans., Air Ride, Jake, 249 W/B, 63" Flat Top \$25,500



1993 Freightliner Conv. Single Axle N14 370 HP, Air Ride Susp., 9 Sp. Trans. 185 W/B Cruise, 48" Bunk, Loaded Inside \$28,000



1984 KW W900 Cummins 400 13 Sp Trans., Jake, Double Bunk, Super Clean Inside \$14,500



We Can Put You In This Truck With No Money Down\* 1991 @ 627.00/Month 1992 @ 702.00/Month \*OAC Call For Details

# DUTCHMAN'S TRUCK SERVICE, INC.

2355 N. READING ROAD, P.O. BOX 325  
PA TURNPIKE EXIT 21 • DENVER, PA 17517  
(717) 336-2867 / PA 1-800-769-9887  
FAX (717) 336-2774



See Our New Lot Over 100 Used Trucks

Extended Sales Department Hours By Appointment