

Public Auction Register

Closing Date Monday 5:00 P.M.
of each week's publication

SAT. JUNE 22 - 9:30AM
Real estate and personal property located off Pricetown Rd. in New Jerusalem, Rockland Twp, Berks Co. By The Estate of Scott A. Youse, William F. Colby, Jr., Esquire. Horning Farm Agency.

MON. JUNE 24 - National Holstein Convention Sale - Fort Worth, Tx. Co-Managed with Massey Sales. The Cattle Exchange.

MON. JUNE 24 - 10AM
Albano Farms Complete Dispersal of Potato and Grain Systems and Equipment Plus Full Line of Potato Farming Equipment of E.C. Malone and Son. Red Creek (Wayne Co.) New York. Pirrung Auctioneers, Inc.

THURS. JUNE 27 - Henry Blank & Eli Esh. Real estate, 11 acre campground, house, barn & 53 camp sites. 5206 Old Strasburg Rd. 7 mi. E. of Strasburg. Salisbury Twp. Kline, Keider & Good aucts.

FRI. JUNE 28 - 1:30PM
State Graded Feeder Pig Sale. Carlisle Livestock Market, Inc.

FRI. JUNE 28 & SAT. JUNE 29 - 9AM
Carriage, sleigh & antique auction. 3 miles S. of New Holland and 3 miles N of the old auction site on New Holland Rd., Lanc. Co., Pa. Larry L. Martin, auct.

SAT. JUNE 29 - 8:30AM
Along Kushwa Rd. in the village of Spring Glen, turn S. off Rt. 25 at the Pine Creek Bridge in Western Schuylkill Co. 12 Mi. W. of I-81, exit 34. Florence L. Savidge & Alfred F. Savidge, owners. Deibert, aucts.

SAT. JUNE 29 - 8:30AM
Real estate & personal property 12x60 trailer with porch plus several out-buildings with 23.8 acres,

located 2 miles west of Oriental, Pa. Just N. of 11-15 in Juniata Co. near Game Lands and River. Ken Smith, Dennis Hassinger, aucts.

SAT. JUNE 29 - 9AM
Consignment Sale, Household Items, Antiques, Furniture, Tools, Farm Machinery,

Farm Supplies. Any item saleable. 2 miles N. of Schaefferstown on Rt. 897, 4 miles S. of Leb., Pa. in Village of Flintville, Ben Habacker, Auct. #AU001296L

SAT. JUNE 29 - 9AM
Antiques & Collectibles, Farm machinery, tools, lumber, household goods. Located at 178 River Drive, Paxton, Pa. approx. 5 miles N. of Millersburg on Rt. 147 or 22 miles S. of Sunbury. Mr. Robert Fenstermacher, owner. David Deibler, Ed Shoop, aucts.

SAT. JUNE 29 - 9AM Con-

ignment sale 4th Annual benefit consignment auction. Benefit Amish Parochial Schools.

SAT. JUNE 29 - 10AM
Tractors, truck, farm equip, tools, misc. Southern York Co., Red Lion, Pa. from Red Lion square take Rt 74 S +/- 2.4 mi. Turn R onto Bahns Mill Rd. & go 0.7 mi. to sale. Wilbert & Dora

Peters, owners. Russell Wright, Ralph Brenneman, aucts.

SAT. JUNE 29 - 11AM
80 Acres Woodland on Texter Mountain Southern Exposure, Lanc. Co. From Ephrata or Exit 21 of the Pa Turnpike take Rt. 272 N. approx. 1 mile to Rt. 897, take 897 N, go through Reinholds and through

Blainsport to Peartown Rd., turn right onto Peartown Rd., go 1/2 mile turn left onto Texter Mountain Rd., go 1/2 mile to property on

left - West Cocalico Twp. Lanc. Co., Pa. By Eugene K. & Linda S. Martin. Robert E & Jeffrey R. Martin, aucts.

HOWARD BLEISTEIN ESTATE



PUBLIC AUCTION

SAT., MAY 25, 1996

9:00 AM

RD # 4, BOX 1795

MOUNT PLEASANT ROAD SOUTH LEBANON, PA

ANTIQUES - HOUSEHOLD - TOOLS

ANTIQUES Majestic cook stove, fine oak chest of drawers, 5 pc. Victorian bedroom suite w/high bed, wash stand acorn leaf pulls, bureau with valet boxes, mirror, side chair and stand, grained dovetail blanket chest, old dry sink, oak wardrobe, oak dresser, large split oak basket, old milk cupboard, 4 qt. Wooden measure, Victorian gold gilded edge mirror, wooden high chair, brass bucket, farm table, 4 painted plank seat chairs, oak parlor table, oak T-back chairs, new perfection kerosene cook stove with ovens, Cable Nelson upright piano, piano stool with talon and ball feet, RCA crank victrola, break-front, treadle sewing machine, round oak veneer table, old sewing notion box, old button collection, ironstone pottie, logwood #28 woodstove, Mumpers dairy advertising calendars, wash boiler, pitcher pump, Anvil, coal oil lanterns, Victorian hibed, brass floor lamp, porch bench, chaitillon market scale, Erie iron skillet, wash boiler, wooden clothes tree, whet stone. **TOOLS & MISCELLANEOUS** About 100 bushel baskets, drill press, table saw, vise, blacksmith forge, carpenter tools, hand tools, Coleman gas lantern, folding army cots, camping tent, 5 ga. Ice cream freezer can, wringer washer, lumber, over 20 cords of firewood cut split and stacked neatly, shovels, rubber tire wheel barrow, roto tillers, 2 headed ax, pcks, coal, coal stoves, brooder stove, maul, Sears chain saw, electrolux vacuum, canning jars, pine corner cupboard, Sears refrigerator, book shelf, Coldspot chest deep freezer, Husky riding mower, one man saw, fence insulators, floor sanders, discs sanders, paint, 2 wooden ladders, scythe, mud pan, rakes, and many more items still uncovered.

DIRECTIONS: 2 miles west of Fontana on Route 322, go south on Mount Pleasant Road for 2 1/2 miles auction on left, just south of Thousand Trails Campground.

FOOD STAND

CONDITION BY:

Howard Bleistein, Jr., Exec.

ATTORNEY FOR ESTATE

Gerald Brinser, Esquire

AUCTION CONDUCTED BY:

NELSON L. EBERSOLE, AUCTIONEER

LICENSE # - AU-001307-L

PHONE (717) 867-5221 FAX (717) 867-5606

30 WEST MAIN STREET

ANNVILLE, PA 17003



RESTAURANT EQUIPMENT AUCTION

BEDFORD COUNTY 4-H

FAIRGROUNDS

MAY 19 - SUNDAY - 12 NOON

Truck Loads of commercial restaurant equipment received from major restaurant chains, pallet quantities of stainless steel pans, pots & kettles. Food containers, china & beverage service pcs. BUNN coffee makers, JET SPRAY drink dispensers, RUBBER MAID service carts, sheet pan racks, time clocks, SKIDS OF SMALL WARES & ART.

HOBART 5, 10, 20, & 30 QT. MIXERS.

HOBART AUTOMATIC & BERKEL'S SLICERS TRAUlsen REFRIGERATORS AND FREEZERS

Stainless Steel Work Tables, VULCAN Gas Stoves, SOUTH BEND 6 Burner Stove, Toasters, DITTO DEAN Slicer/Chopper. METRO Shelving, Gas Convection Oven, GROEN Kettle-Single Phase 206 V.

FROM LOCAL BROOKLYN BAGEL SHOP - (2) Refrigerated BAIN MARIE Sandwich Boards, 3 Bay SS Sink, MANIT-WOC Ice Machine, (2) Chain Drive Toasters, SS Tables, Elect. Convection Oven. Soda & Coffee Machines.

MARK BARANOWSKI AUCTIONEER specializes in restaurant equipment auctions of good, recommendible, commercial equipment and caterers supplies. Equipment running and ready to go to work. Call for latest fax listing. Phone Bids Accepted.

Terms: Cash, Appr. Checks, Visa, MC, Discover, Amex. 10% Buyer's Premium

MARK BARANOWSKI AU 2570 (717) 657-2317

PUBLIC AUCTION

Discontinuing Mill Operation Will Sell

Located West of Hagerstown, Md. & 6 3/4 Miles West Off I -81 at Exit 6B (3 1/2 miles West of Raceway) & just East of Clear Spring, Md. on Route 40 to 14342 National Pike.

Tuesday, May 28, 1996 at 11:30 A.M.

24,501 bushel 36' x 10 ring GSI grain bin, full floor w/metal stands, 10HP 1 phase fan, spreader, 5 roof vents, inside/outside ladder, 2 ring door, 8" unload w/power sweep, 8" vertical truck load auger-nearly new condition, 3,308 bushel 15'x7 ring GSI hopper tank, 45' cone, ladder, 30' boot for 4" unload auger, 60 ton 8'x10'x approx. 30', welded hopper tank, has 2-30 ton compartments to hold limestone, etc. 2-4" fill pipes, ladder, 2-4" boots with slides, 2045 bushel 12'x7 ring GSI hopper tank, 45' cone, ladder, 30' boot for 4" unload auger, 12" fan & aeration kit in hopper, 1936 bushel 12'x6 ring GSI hopper tank, 60' cone, 2" boot with GSI flail, 4" unload, Four ea. 578 bushel 9'x3 ring GSI hopper tanks, 60' cones, 6" unload boot with flail, ladders, 511 bushel 7'x5 ring GSI hopper tank, 60' cone, 36" extension legs, ladder, 8" unload boot. 111 bushel 6' x 1 ring GSI hopper tank, 60' cone, ladder, 30' boot, 1039 bushel 12'x3 ring Butter hopper tank, mounted on 12'x12'x20' high superstructure (truck loading), ladder on both, 16" roller valve platforms, 4" auger, 140' long, double bolt 5 HP driver, 2-4" downspout, two way, 3000 bushel 68' Sweet galv. bucket elevator, 8"x8 hole distributor, main platform, service platform, ladder and cage, 270'x8" downspout, 5 cushion boxes, 2"8" two ways, 1500 bushel 70' Sweet galv. bucket elevator, 6" three ways, 120'x6" downspout, main platform, ladder, 800 bushel 48' Honeyville galv. bucket elevator, main platform, 6" three way, 60' x 6" downspout, ladder, cage, high temperature belting (short piece of standard bolting inserted), One ton AFS Master Mix computerized feed processing system, IBM compatible, 486sx33 processor, Dot Matrix printer, 1 ton mixer, surge tank, 18' bucket elevator, 3 compartment medic hopper, 500 lb. hopper, misc. motor & augers, numerous augers of various sizes & lengths to be sold separately, Phase rotary 20 HP converter, Cardinal shallow well 40' electronic truck scale 100,000 lbs by 20 lb. increments, Grain dryer converted to bean cooler, could be converted back to dryer.

Note to buyers: All bins are in very good condition. 1979 Ford 9000 tri-axle cab & chassis, 290 Cummins, 13 sp., power divider, 4 compartment auger feed body, Husky 4500 gal. truck mount top fill, liquid manure tank.

TERMS: Cash or approved check - Not responsible for accidents

E&A Poultry

Auctioneer: Robert C. Mullendore
Boonsboro, Md.
Phone 301-582-0546

PUBLIC SALE

Memorial Day

Monday, May 27, 1996

at 9:00 a.m. SHARP!

118 Pennsylvania Avenue, Westminster, MD

Estate of Raymond L. Young - 70 year accumulation

Antiques: Early 2pc cupboard, 1pc oak cupboard w/glass doors & 2 drawers, Rare large farm table w/drawer & drop leaf, nice 3pc oak bedroom suite, Oak bureau w/mirror, Oak 5 drawer dresser, Dovetail dough tray box w/lid, 6 Plank bottom chairs, 4 Press back solid seat chairs, Knee-hole desk & chair, Blanket chest w/feet, Judge desk, Square Table w/turned legs, Table w/drawer, high chair 1pc cupboard, Wash bowl & pitcher stand w/drawer, various types of old rockers, Clothes Rack, 1 drawer Cabinet, 6' Church bench, Captains chair, Wooden chest, Oak extension table, 1908 Westminster plate, Old clip board, Corn creamer, 1 string of Brass Sleigh Bells, Lg & small hand bells, Fray's 100# Scales, Small spring scales, Butter prints & paddle, Fox horn, Coffee grinder w/Pewter top, Metal trunk bank w/key, Optician glasses, Oil lamp & Bracket lamp, several Globes, 1 set shaft bells, 2 Aladdin lamps, Marbles, 2 shelf 8 day Clocks, Horse clock, Electric Clock & Brass arch w/bell, Small scale Steam Engine, Mirror of Steam Engine, Antique Fire Extinguisher, ABC Toy picture blocks, Children tinware & kitchen ware, Rocking Animals, Metal Trolley car, Cast iron Horse & Cart, Spin top, Cream of Wheat man, Early Christmas decorations, 10 boxes early Christmas Balls, Tinsel w/bells, Cloth bags w/advertising, Sewing basket, Advertising calendars, Bible Poster, Early sports cards, Advertising fans, Coverlet, Quilts, Comforters, Patch & crazy quilts, Buggy robe, Horse blanket.

Household: Recliner chair (like new), portable Zenith TV, Numerous Picture frames, File cabinet, 24.7 Cu Ft Deep Freeze, Home comfort bread & cake cabinet, Davis sewing machine head & base, Humidifier, 2 cots, Ken Moore Elect Sewing mach w/cabinet & chair, RCA Radio, Wooden handle knives & forks, 7 Place setting Oneida Silverware.

Glassware: Carnival glass, Pattern & press glass, Water sets, Footed dishes, Cake plates, Depression & color glass, 88 pieces of Ballerina china, 23 PCS of Blue Bird pattern, Lg Meat Platter, Mixing bowls, 2 Lg brown mixing bowls, Green milk glass, Salt & Peppers, Green berry set, Blue china berry set, Oat meal dishes, Germany flower design plate, 9pc Pitcher & bowl set, Bowl & pitcher.

This list could go on & on. Mr. Young lived to be over 90 years old and this collection spans 70 years of housekeeping.

Food Stand

Terms Cash on Personal Property
Not responsible for accidents

Edna Y. Eyler
B. Irene Young

Personal Representatives,

Estate of Raymond L. Young

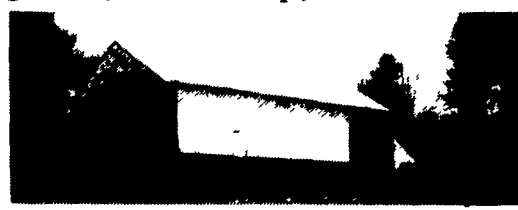
Calvin L. Amoss, Auctioneer
Dwight C. Amoss, Auctioneer
410-756-6784

PUBLIC AUCTION

OF 13 ACRE FARMETTE

Friday, June 21st at 7:00 P.M.

Located just north of Bowmansville along Rt. 625, Brecknock Twp., Lancaster Co.



REAL ESTATE: Brick & alum. bi-level; 1st floor consists of lg. living room w/bay window, dining room, eat-in kit. w/built-in self cleaning oven, range & refrigerator, 3 BR's and full bath. Lower level has a lg. family room w/brick FP, laundry rm. & 1/2 bath, oil hot air heat, 2 yr. old roof. 3 car garage, 18x24 rear deck overlooking riding ring & pasture.

BARN: 36' x 80' two story stone & frame bank barn; 1st flr. has open stables & 2 box stalls. 2nd flr. has 3 drive-in bays & 2 bays for hay storage.

---85' x 240' Riding Ring---

Note: This is a one of a kind property located within minutes of PA Turnpike exit 21 with large riding ring for horses, approximately 10 acres of pasture with a stream running through. The house is surrounded by shade trees and shrubbery.

OPEN HOUSE: Saturday, May 25th & June 1st from 1-4 PM or by appointment.

TERMS: 10% day of sale; settlement on or before August 5, 1996.



HORNING FARM AGENCY, INC.

Alvin Horning AU-0433-L

Elton Horning AU-0434-L

Route 23, Morgantown

(610) 286-5183

TERMS BY:

Glen & Lucy Weber