

**Delmarva  
Broiler**

**MAY 15, 1996**

Movement of ready-to-cook whole birds ranged light to good and best on the adequate to short supply of 3 pound and smaller sizes Offerings on the heavier weights varied by plant, but were fully adequate overall. Live supplies were moderate to heavy; weights were mostly desirable to heavy. Processing schedules were moderate to heavy. Some plants plan to operate Saturday because operations were curtailed during yesterdays power outage. Less than trucklot asking prices were unchanged at 62 to 74 cents. Trade sentiment was steady. Wings and drums cleared well. Breast items were readily available. Leg quarters were adequate.

ESTIMATED SLAUGHTER OF BROILER/FRYERS IN DELMARVA (000) ESTIMATED ACTUAL \*\*AVG. WEIGHT ACTUAL AVG. WEIGHT 05/15 05/13 05/13 05/08 05/06 2,468 2,411 4.91 2,385 4.91 \*AVERAGE WEIGHT 05/10 SHOULD HAVE READ "4.72" \*BROILER/FRYER CURRENT NEGOTIATED PRICES FOR IMMEDIATE DELIVERY INCLUDES MOSTLY MULTIPLE-DROP SHIPMENTS OF BRANDED AND WING TAGGED TO NEW YORK CITY FROM DELMARVA BRANDED U.S. GRADE A RANGE

WEIGHTED AVERAGE UNAVAILABLE NO. OF BOXES \* of plants reporting.

**Hackettstown  
Poultry & Egg**

Hackettstown, N.J.  
Report Supplied by Auction  
Tuesday, May 14, 1996

Report Supplied by Auction  
HEAVY FOWL .30-1.00.  
MIXED FOWL 1.20-1.85.  
PULLETS EACH 2.50.  
GEESE .15-.20.  
BANTAMS 1.30-2.00.  
ROOSTERS .85-1.60.  
TURKEYS .65-.80.  
BUNNIES EACH 2.75-6.50.  
DUCKS 1.55-1.75.  
RABBITS 1.00-2.10.  
PIGEONS EACH 2.50-4.75.  
EGGS: WHITE EXTRA LARGE & JUMBO .70-.85, LARGE .60-.75, MEDIUM .30-.37, SMALL 22-.30, PEEWEEES .20-.21; BROWN EXTRA LARGE & JUMBO .70-.85, LARGE .61-.70, MEDIUM .31, SMALL 24, PEEWEEES .20-.21.

**National  
Egg Market**

**MAY 15, 1996**

Prices were unchanged to higher in the Northeast and Midwest, and unchanged elsewhere. The market tone remained steady to firm. Demand was mixed into retail, best where featured, and food service demand was fair to fairly good. Breaker demand was aggressive, and competition between breakers and graders for nest run eggs continued. Supplies were barely adequate to instances fully adequate, and extra eggs generally cleared or were maintained with confidence. Breaking stock supplies were adequate to close under a fully steady to firm market tone. Light type hen offerings were ample for the light demand, and plants remained booked to capacity for the next few weeks.

**Pa. Grain**

**May 13, 1996**

Report supplied by PDA  
COMPARED WITH LAST MONDAY'S MARKET FOR SOUTHEASTERN, CENTRAL, AND SOUTH CENTRAL PA: CORN STEADY TO .30 HIGHER, WHEAT AND BARLEY UNEVENLY STEADY, OATS STEADY TO STRONG, SOYBEANS

UNEVEN .10 LOWER TO .05 HIGHER, BAR CORN STEADY TO 8.00 HIGHER. SOUTHEASTERN PENNSYLVANIA CORN NO. 2-Y RANGE 5.10-5.57, AVERAGE 5.32, CONTRACT FOR HARVEST 3.40-3.60, RANGE MOSTLY 5.20-5.50; WHEAT NO. 2 RANGE FEW REPORTED 5.87-6.30, AVERAGE 6.12, CONTRACT FOR HARVEST 5.30-5.73; BARLEY NO. 3 RANGE FEW REPORTED 4.00-4.40, AVERAGE 4.21, CONTRACT FOR HARVEST 2.70-3.25; OATS NO. 2 RANGE 2.50-2.60 FEW REPORTED 2.85, AVERAGE 2.65, CONTRACT FOR HARVEST FEW REPORTED 2.20; SOYBEANS RANGE 7.70-8.05 FEW REPORTED 7.61, AVERAGE 7.86, CONTRACT FOR HARVEST 7.34-7.59; FEW REPORTED PER HUNDREDWEIGHT BUCKWHEAT CONTRACT FOR HARVEST 10.90; FEW REPORTED GRAIN SORGHUM #2 RANGE 5.12, AVERAGE 5.12, CONTRACT FOR HARVEST 3.35; AVERAGE MOISTURE BAR CORN RANGE 140.00-155.00, AVERAGE 146.86.

**SOUTH CENTRAL  
PENNSYLVANIA**

CORN NO. 2-Y RANGE 5.00-5.35 FEW REPORTED 4.70, AVERAGE 5.08; WHEAT NO. 2 RANGE FEW REPORTED 5.50, AVERAGE 5.50; BARLEY NO. 3 RANGE 3.50-4.00, AVERAGE 3.77; OATS NO. 2 RANGE 2.50-2.65 FEW REPORTED 3.00, AVERAGE 2.63; SOYBEANS RANGE 7.60-8.00, AVERAGE 7.87; AVERAGE MOISTURE BAR CORN RANGE 125.00-143.00, AVERAGE 131.33.

**SOUTHEASTERN, CENTRAL &  
SOUTH CENTRAL SUMMARY**

CORN NO. 2-Y RANGE 5.00-5.50, AVERAGE 5.25; WHEAT NO. 2 RANGE 5.50-6.30, AVERAGE 5.94; BARLEY NO. 3 RANGE 3.55-4.25; AVERAGE 3.98; OATS NO. 2 RANGE 2.50-2.75, AVERAGE 2.64; SOYBEANS NO. 1 RANGE 7.70-8.05, AVERAGE 7.87; AVERAGE MOISTURE BAR CORN RANGE 125.00-155.00, AVERAGE 140.58.

**CENTRAL PENNSYLVANIA**

CORN NO. 2-Y RANGE 5.00-5.42 FEW REPORTED 5.57, AVERAGE 5.21; WHEAT NO. 2 RANGE FEW REPORTED 5.65-6.00, AVERAGE 5.83; BARLEY NO. 3 RANGE FEW REPORTED 3.70-4.00; AVERAGE 3.90; OATS NO. 2 RANGE 2.40-2.75, AVERAGE 2.64; SOYBEANS RANGE 7.88-8.00 FEW REPORTED 7.50, AVER-

AGE 7.88; AVERAGE MOISTURE BAR CORN RANGE 130.00-135.00, AVERAGE 132.50.

**WESTERN PENNSYLVANIA**

CORN NO. 2-Y RANGE 4.60-5.21, AVERAGE 4.98 RANGE MOSTLY 4.98-5.10; WHEAT NO. 2 RANGE 5.75-5.90, AVERAGE 5.80; BARLEY NO. 3 RANGE FEW REPORTED 3.75-3.95, AVERAGE 3.85; OATS NO. 2 RANGE 2.25-2.60 FEW REPORTED 2.00, AVERAGE 2.40; SOYBEANS RANGE FEW REPORTED 7.79-7.80, AVERAGE 7.80; AVERAGE MOISTURE BAR CORN RANGE FEW REPORTED 120.00, AVERAGE 120.00.

**MONTH AGO**

CORN NO. 2-Y 4.67; WHEAT NO. 2 5.50; BARLEY NO. 3 3.62; OATS NO. 2 2.49; SOYBEANS NO. 1 7.67; AVERAGE MOISTURE BAR CORN 125.57.

**YEAR AGO**

CORN NO. 2-Y 2.74; WHEAT NO. 2 3.53; BARLEY NO. 3 1.73; OATS NO. 2 1.62; SOYBEANS NO. 1 5.48; AVERAGE MOISTURE BAR CORN 74.75.

**Leinbach's Hay**

Shippensburg, PA  
May 11 and 14

Report Supplied by Auction

62 LOADS.  
ALFALFA: 55.00-117.00.  
MIXED HAY: 40.00-92.00.  
TIMOTHY: 54.00-98.00.  
CLOVER: 60.00-88.00.  
BROME GRASS: 72.00-114.00.  
ORCHARD GRASS: 50.00-88.00.  
STRAW: 39.00-70.00.  
EAR CORN: 150.00-156.00.

**Kutztown Produce  
Auction**

Report Supplied by Auction  
Saturday, May 11, 1996

TOTAL LOADS: 30.  
ALFALFA HAY: 150.00-160.00.  
MIXED HAY: 72.50-145.00.  
TIMOTHY: 90.00-145.00, 1.50 BALE.  
GRASS HAY: 107.00.  
WHEAT STRAW: 49.00-62.50, .75 BALE.  
BARLEY STRAW: 62.50.  
OATS: 1.90 BU.

**WHAT'S AHEAD FOR  
CORN & SOYBEAN**

- We Deal In Futures And Options
- Our Only Business is Commodity Futures And Options
- In Allentown Area and Same Principals For Over 20 Years
- When Buying options, your risk is limited to the loss of the premium paid plus all transaction costs. Buying futures and options have inherent risks and should be done only with risk capital.

FOR INFORMATION...LITERATURE...  
CHARTS...PLEASE CALL

(610) 366-7979 or 800-543-8939

LEHIGH VALLEY FUTURES INC.

Commerce Plaza, Suite 249, 5000 Tilghman Street,  
Allentown, Pa 18104

The risk of loss in trading futures and options on futures can be substantial. Futures and options trading may not be suitable for everyone. You should carefully consider the risks in light of your financial condition in deciding whether to trade.



Hay And Straw Sales  
Will Start At 10 A.M.  
Every Wed.

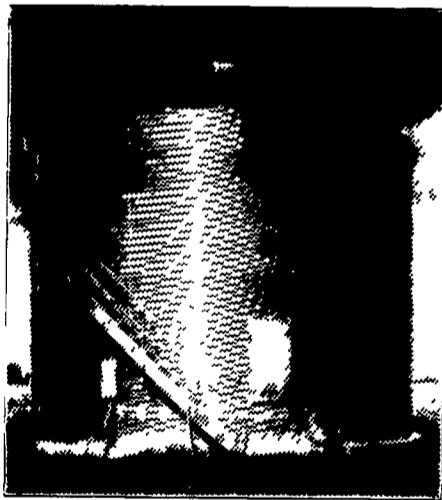
**GOOD'S AUCTION**

11 North Maple Ave.  
Leola, PA 17540  
717-656-8911  
717-656-9558



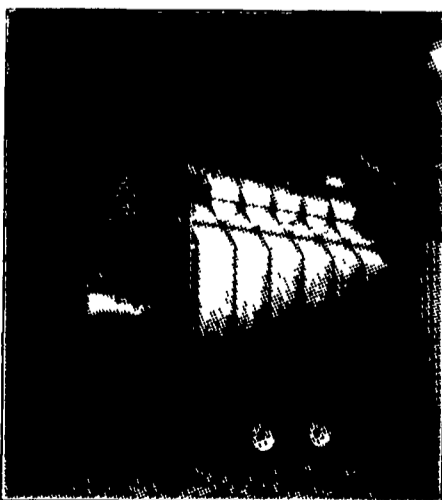
**Grain Systems, Inc.**

PROFITABLE FARMING



- FARM BINS
- COMMERCIAL FLAT BOTTOM AND HOPPER BOTTOM TANKS
- BULK FEED TANKS
- GRAIN DRYERS
- GALVANIZED FANS AND HEATERS

- TOP DRY SYSTEMS
- FLOORS
- SUPPORTS
- FLEX-FLO FEED SYSTEMS
- SAFETY ACCESS EQUIPMENT



**automatic farm systems**

608 Evergreen Rd., Lebanon, PA 17042

(717) 274-5333

Check Our Low Prices Before You Buy

**DISTRIBUTORS FOR:  
SILO QUEEN**



- 2339 • 2090 - 97 Day • 2518
- 2390 • 502 - 109 Day
- 2400 - 110 Day
- 2525 - 117 Day

**SOYBEANS**  
Boydell Farms #363  
#3500 (2nd Place BACS Trials)  
Agri & North Coast  
8836 354.284  
9139 The All New 374  
9329 9434  
-3090 E

Also Avail. Resnick, Pella & Williams

**Baler  
Twine  
\$18.95**

WHOLESALE & RETAIL

**BOYDELL FARMS**

302 Iona Road, Lebanon, PA 17042  
Phone: 717-272-8943

**CRAIG'S HOG BUYING STATIONS**

Four Locations To Serve You!

Receiving Butcher Hogs:



SHIPPENSBURG  
Wed & Sat.  
(717) 532-5224

All  
Stations  
Open  
7:30 am  
to  
11:00 am



GREENCASTLE  
Mon., Wed., Sat  
(717) 597-2315



MARTINSBURG  
Saturday  
(814) 793-2311

We still  
Buy  
Hogs  
The  
"Old  
Fashioned  
Way"



THOMASVILLE  
Wednesday  
(717) 792-2248

- No Advance Scheduling
- No Consignment Too Small Or Too Large
- Weighed & Paid For Upon Arrival
- Competitive Prices Paid For Light Weight Hogs, Sows & Boars

For More Information Contact Jeff Craig At (717) 532-5224