

**HOG MARKETS**

**Hatfield Direct**

Hatfield, Pa.  
Reports Supplied by Packer  
For Monday, May 13, 1996  
And Wednesday, May 15, 1996  
**MONDAY**  
TOTAL HOGS: 6488.  
LAST WEEK: 6667.  
TREND: COMPARED TO LAST MONDAY: 3.50 HIGHER.  
55.5%-56.4% 216-269 LBS.: BASE: 57.67.  
56.5%-58.4% 216-269 LBS.: 58.44-59.22.  
58.5%-60.4% 216-269 LBS.: 60.00-60.78.  
FEW 216-269 LBS.: 61.55.  
GOOD'S RECEIVING  
MONDAY: CASH 56.25.  
**WEDNESDAY**  
TOTAL HOGS: 6361.  
LAST WEEK: 6606.  
TREND: COMPARED TO LAST WEDNESDAY: 3.67 HIGHER.  
55.5%-56.4% 216-269 LBS.: BASE: 59.92.  
56.5%-58.4% 216-269 LBS.: 60.69-61.47.  
58.5%-60.4% 216-269 LBS.: 62.25-63.03.  
FEW 216-269 LBS.: 63.80.  
GOOD'S RECEIVING  
WEDNESDAY: NO SALE; WEIGHT AND GRADE AVAILABLE.

**S & J Villari Livestock Feeder Pig Sale**

Millsboro, Del.  
May 13, 1996  
Report Supplied by Auction  
654 HEAD  
30-39 LBS. 66.00-78.00; 40-49 LBS. 67.00-81.00; 50-59 LBS. 65.00-80.00; 60-69 LBS. 65.00-68.00; 80-89 LBS. 50.00-58.00; 105 LBS. 45.00.

**Middleburg Hog Report**

Middleburg, Pa.  
May 13 and 14, 1996  
Report supplied by PDA  
323 HEAD BULK OF SUPPLY SOLD ON MONDAY AND REPORTED BY AUCTION. BARROWS AND GILTS 5.00-6.00 HIGHER, SOWS 2.00-3.00 HIGHER.  
BARROWS AND GILTS: US#1&2 220-260 LBS. 58.00-59.75. US#1-3 220-270 LBS. 55.25-57.50, 200-220 LBS. 50.25-54.75.  
SOWS: US#1-3 300-650 LBS. 37.25-40.50.  
BOARS: 26.00-28.25.

**Indiana Hogs**

SPRINGFIELD, IL  
MAY 16, 1996  
Barrows and Gilts: Mostly 1.00 Higher. Demand good on a moderate run. US 1-2 220-260 lbs. 58.00-60.00 few 57.50 US 2-3 230-260 lbs. 50.50-57.50 210-230 lbs. 46.00-50.50  
Sows: Near Steady. US 1-3 300-500 lbs. 39.00-43.00 500-650 lbs. 43.00-46.50  
Boars: 32.00-36.00

**New Holland Hogs**

LANCASTER, PA  
MAY 13, 1996  
TODAY 1217  
LAST MONDAY 1170  
LAST YEAR 1185  
TREND: Compared to last Monday barrows and gilts 4.00-6.00 higher.  
BARROWS AND GILTS: US 1-2 220-260 lbs 58.00-59.00 US 1 220-255 lbs 59.00-59.50 few 59.75-59.85 US 1-3 220-280 lbs 57.00-58.00

**Regional Hay**

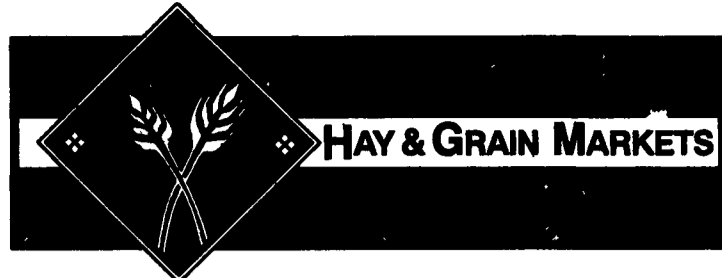
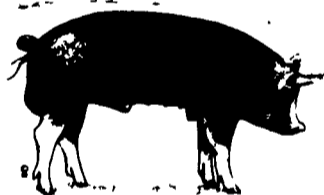
May 13, 1996  
Eastern, Pa.  
HAY & STRAW MARKET FOR EASTERN PA - (ALL HAY NO. 2 AND BETTER. PRICES PAID BY DEALERS AT THE FARM & PER TON.) HAY AND STRAW SLOW, STEADY TO WEAK.  
ALFALFA 80.00-120.00 FEW REPORTED 135.00; MIXED HAY 70.00-110.00 FEW REPORTED 125.00; TIMOTHY 70.00-105.00 FEW REPORTED 125.00; STRAW 40.00-70.00; MULCH 20.00-45.00.

SUMMARY OF LANCASTER CO. HAY AUCTIONS FOR WEEK ENDING 05/10/96. PRICES PER TON: LOADS: 256 HAY, 71 STRAW & 28 BAR CORN. ALFALFA 95.00-162.00; MIXED HAY 83.00-179.00; TIMOTHY 90.00-170.00; STRAW 54.00-81.00; EAR CORN 145.00-162.00.

SUMMARY OF CENTRAL PA. HAY AUCTIONS FOR WEEK ENDING 05/10/96. PRICES PER TON: LOADS: 217 HAY, 25 STRAW & 28 BAR CORN. ALFALFA 82.00-175.00; MIXED HAY 72.50-125.00; TIMOTHY 75.00-105.00; STRAW 50.00-75.00; EAR CORN 128.00-167.50.

**The Windmill**

Penn Yan, N.Y.  
Friday, May 10, 1996  
Report Supplied by Auction  
21 LOADS.  
TIMOTHY: 1ST CUTTING 70.00-76.00.  
MIXED HAY: 1ST CUTTING 60.00-93.00.  
ALFALFA: 1ST CUTTING 87.00, 2ND 80.00-89.00, 3RD 117.00.  
WHEAT STRAW: 70.00-85.00, LARGE ROUND BALES 19.00 EACH.  
TIMOTHY SEED: 39.00 BU.  
CLOVER SEED: 50.00 BU.  
PRODUCE AUCTION 10 A.M. HAY AUCTION 11 A.M. ON FRIDAYS.



**HAY & GRAIN MARKETS**

**Greencastle Livestock Market**

May 9 and 13  
Hay & Straw  
Report Supplied by Auction  
38 LOADS.  
ALFALFA: 69.00-97.50.  
TIMOTHY HAY: 75.00-92.50.  
MIXED HAY: 60.00-160.00.  
ORCHARD GRASS: 65.00-95.00.  
BROME GRASS: 114.00.  
STRAW: 29.00-51.00.

**Green Dragon Hay**

Ephrata, Pa.  
Friday, May 10, 1996  
Report Supplied by Auction  
92 TOTAL LOADS.  
MIXED HAY: 33 LOADS, 85.00-187.00.  
ALFALFA: 12 LOADS, 90.00-205.00.  
TIMOTHY: 8 LOADS, 85.00-152.00.  
STRAW: 23 LOADS, 46.00-79.00.  
EAR CORN: 11 LOADS, 150.00-162.00.  
ORCHARD GRASS: 4 LOADS, 90.00-155.00.

**Diffenbach Auction Center**

New Holland, Pa.  
Monday, May 13, 1996  
Report Supplied by Auction  
TOTAL LOADS: 98.  
ALFALFA: 75.00-275.00.  
MIXED HAY: 60.00-200.00.  
TIMOTHY: 65.00-160.00.  
ORCHARDGRASS: 42.00-185.00.  
STRAW: 60.00-82.00.  
EAR CORN: 135.00-165.00.  
OATS: 2.50.

**Vintage Hay**

Paradise, PA  
Thurs., May 16, 1996  
Report Supplied by Auction  
ALFALFA: 60.00-90.00.  
MIXED HAY: 65.00.  
GRASS: 82.00-107.00.  
STRAW: 59.00.  
SALE TIME 12 NOON.

**Middleburg Hay**

Middleburg, PA  
Tues., May 14, 1996  
Report supplied by PDA  
37 LOADS. 24 LOADS OF HAY.  
ALFALFA: 4 LOADS, 165.00-250.00.  
MIXED HAY: 18 LOADS, 70.00-155.00.  
TIMOTHY: 2 LOADS, 102.50 AND 125.00.  
STRAW: 5 LOADS, 70.00-90.00.  
EAR CORN: 7 LOADS, 140.00-167.50.  
OATS: 1 LOAD, 3.35 BU.

**Kirkwood Hay Auction**

Kirkwood, Pa.  
Tuesday, May 14, 1996  
Report Supplied by Auction  
43 LOADS OF HAY.  
MIXED: 1ST CUTTING 85.00-131.00; 2ND CUTTING 120.00-135.00.  
TIMOTHY: 91.00-138.00.  
ALFALFA: 1ST CUTTING 170.00-134.00; 2ND CUTTING 155.00-180.00; 3RD CUTTING 97.00-180.00.  
CLOVER: 91.00-106.00.  
GRASS: 80.00-152.00.  
WHEAT STRAW: 64.00-77.00.  
SALE TIME 11 A.M.

**North Jersey Market**

Hackettstown, N.J.  
Report Supplied by Auction  
Tuesday, May 14, 1996  
Hay—Straw & Grain Report  
ALFALFA: 4 LOTS, 2.20-2.70 BALE.  
MIXED HAY: 8 LOTS, 1.00-2.00 BALE.  
TIMOTHY: 4 LOTS, 1.50-2.10 BALE.  
GRASS: 6 LOTS, 1.20-1.70 BALE.  
STRAW: 1 LOT AT 2.00 BALE.  
OAT STRAW: 1 LOT AT 1.20 BALE.  
SHELLED CORN: 2 LOTS, 4.50 AND 8.50 BAG.  
OATS: 1 LOT AT 8.75 BAG.  
WHEAT STRAW: 5 LOTS, .85-1.60 BALE.  
CORN SCREENINGS: 1 LOT, 6.00 BAG.  
TREE SEEDLINGS: 1 LOT, 4.00 BUNDLE.  
34 LOTS TOTAL.

**Belleville Hay**

Wednesday, May 15  
Belleville, PA  
Report Supplied by Auction  
ALFALFA HAY: 4 LOADS, 102.50-125.00.  
MIXED HAY: 20 LOADS, 90.00-160.00.  
STRAW: 1 LOAD, 95.00.  
OATS: 3.10 BU.

**Westminster Hay**

Westminster, Md.  
Tuesday, May 14, 1996  
Report Supplied by Auction  
140 LOTS TOTAL.  
ALFALFA: 80.00-90.00, 1.30-2.40 BALE.  
TIMOTHY: 82.00-115.00, 1.00-2.70 BALE.  
MIXED HAY: 67.00-80.00, .60-2.40 BALE.  
GRASS: .60-2.80 BALE.  
STRAW: .25-1.80 BALE.

**CARLISLE LIVESTOCK MARKET, INC.**  
**FED and FEEDER CATTLE SALE**  
TUES., MAY 21 7:00 PM  
Early Bird Pens Close 2 PM  
Turn South Off I-81 @ Exit 12  
Market (717)249-4511  
Evenings Jim (717)249-2359

**PIGS**  
STATE GRADED SALE  
FRIDAY  
May 24  
1:30 P.M.  
AT  
**Carlisle**  
LIVESTOCK MARKET, INC.  
Exit 12 Off I-81 Turn South  
(717) 249-4511 or  
Evenings Jim, 249-2359

**WALTER M. DUNLAP & SONS**  
Lancaster Stockyard  
1147 Litz, Pike, Lancaster, PA 717-397-5138  
OFFER ALL CATTLE & HOG FEEDERS  
**TWO MARKETING DAYS**

Monday	Wednesday
9 AM: Goats, Slaughter Calves, Sheep/Lamb Small Calves	6 AM-NOON Hog Receiving
9:30 AM: Bulls, Heifers, Steers, Cows	11 AM: Slaughter Cattle
1 PM: Hog	12 NOON: Feeder Cattle

**GRADED SOW SALE**  
2nd & 4th TUESDAY, EACH MONTH  
Receiving - 6 A.M. - 11 A.M.

**PENNFIELD GRAIN BANK**

**START YOUR BARLEY BANK NOW!!**  
At Pennfield you can use the Barley crop that is in the field to pay for your feed bills now.

Prices Week Of 05/20/96  
Corn \$5.75 Bu.  
Soybeans \$8.04 Bu.  
Barley \$4.55 Bu.

- No Storage Charges
- Prices Updated Weekly
- Grain Bank Balance Shown On Each Invoice
- No Hidden Charges

For every ton of qualifying dairy feed purchased you will receive one ton of grain back hauled at no charge

**INDEX**  
Four Sections

**COLUMNS**  
Now is the Time..... A10  
On Being A Farm Wife..... B 4  
Family Living Focus..... B 5  
All Gardens..... B 7  
Ida's Notebook..... B18

**DEPARTMENTS**  
Editorial..... A10  
Farm Calendar..... A10  
Farm Forum..... A10  
Futures..... A16  
Mailbox Markets..... B19  
Sale Reports..... B24  
Public Auction Register..... B30  
Classified Ads..... C 4, D14  
Business News..... D 6

**DAIRY**  
DHIA Focus..... A33  
Pa. DHIA..... D 3  
Crawford DHIA..... D 3, D12

**HOME AND YOUTH**  
Homestead Notes..... B 2  
Home On The Range..... B 6  
Cook's Question Corner..... B 8  
Farm Women Societies..... B 9  
Kid's Korner..... B10  
4-H Happenings..... D15, B18  
FFA Happenings..... B18  
You Ask, You Answer..... B26

**FEATURES**  
Manor FFA..... A26  
Poultry Houses..... A27  
Kimberton Field Day..... A20  
Harvest Forages..... A24  
Goat Connection..... B 2  
Mamma Remembers..... B 2  
Herbs For Profit..... B12  
Grain Dust In Blood..... B14  
Sheep, Wool Festival..... D 9  
Md. Sheep Show..... D11