

NEW JOHN DEERE EQUIPMENT



855 MFWD tractor w/loader \$16,160

NEW BRILLIANT EQUIPMENT

BRH 630 no-till, 6R Cultivator.....\$3,650
BRS 6302 6R Cultivator.....\$2,175

USED TRACTORS

(L) JD 2440 w/145 Loader.....\$13,900
(L) JD 1530 w/Loader.....Coming In
(C) JD 4650, SGB, PS, low hrs.....\$41,500
(L) IH 656 Gas, hydro.....\$5,995
(L) JD 4040 SGB, QR.....\$19,500
(C) IH 3088.....\$9,400
(C) Ford 640.....\$4,900

USED EQUIPMENT

(L) IH 51 Forage Box w/gear.....\$895
(C) JD 1209 mo-co.....\$1,095
(C) JD 1209 mo-co.....\$2,195
(C) NI 362 spreader w/hyd. endgate.....\$1,395
(C) Westgo 6R cultivator.....\$1,295
(C) Gehl 800 harvester w/2 heads.....\$2,995
(C) JD FBB Drill.....\$1,295
(C) IH 440 baler w/thrower.....\$1,175
(L) IH 1150 grinder/mixer.....\$1,995
(L) JD F145 5b plow.....\$395
(C) JD 530 Round Baler.....\$8,900
(C) JD 3R Head.....\$2,350



GUTSHALLS, INC.

Carlisle Loysville

(717) 249-2313 (717) 789-4343

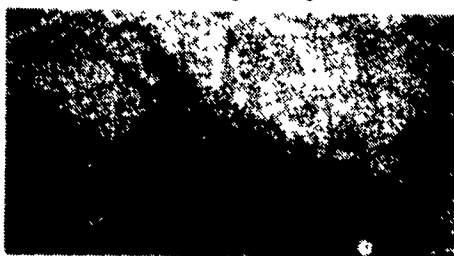
The I & J Cultivator

8 TRUAX No-till Grass Seeder For Sale or Rent



CULTIVATORS: 3 point of horse drawn available in 1-2-3 or 4 rows can be used as a field cultivator with a few attachments. Great for vegetables. We can custom build. Options: rolling shields, disc hillers, liquid side dressers, row tracking system.

2% OFF 10 days On All Cultivators & Rakes



GARDEN CULTIVATOR: Cultivator row width is easily adjusted from 16" to 34". Cultivator includes a narrow single tree. Total weight 110 lbs. UPS delivery available.

I & J MANUFACTURING

DEPT. LF, 5302 Amish Road • Gap, PA 17527

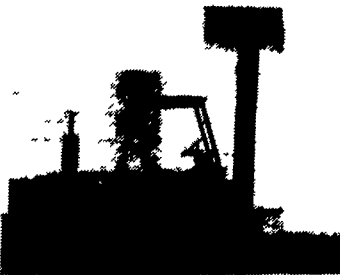
717-442-9451

(Call Between 8:45-9:00 A.M. Weekday Ask For Jake)

NEED A LIFT?

over 50 Forklifts for sale in all types & sizes

Mechanic Specials too!

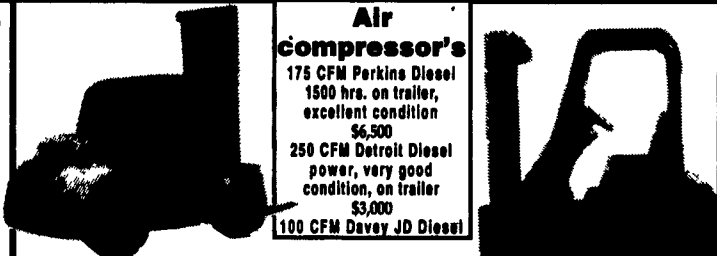


MASSEY

6000 Lb. to 28' Diesel, Very Good Cond. \$7,500

(410) 337-3570

Call Alan Anytime, Baltimore, MD



Air compressor's

175 CFM Perkins Diesel 1500 hrs. on trailer, excellent condition \$6,500
250 CFM Detroit Diesel power, very good condition, on trailer \$3,000
100 CFM Davay JD Diesel

12,000 Lb. Hyster, Gas (New Engine) \$8,500

2,500 Lb. Hyster 3 wheeler sideshifter, gas, auto, good shape \$3,500

PNEUMATICS (AIR TIRE)

8,000 lb. Toyota, Diesel, See Thru Mast, 1981 VG Cond.....\$8,000
6,000 lb. Toyota, LPG, See Thru Mast, 1986 VG Cond.....\$6,000
6,000 lb. Baker (Dual) Gas, P/S, Auto, Very Strong & Good.....\$4,800
5,000 lb. Yale, Gas, Slant 6 Chrysler, P/S, Auto, VG Cond.....\$5,200
5,000 lb. A/C, LPG, 3 Stage, 1987 Needs Some Work.....\$3,000

SOLID TIRE

8,000 lb. Clark, Gas, Runs Well But Smokes Like Mad.....\$1,800
5,000 lb. Hyster, LPG, 3 Stage Sideshift, 3,000 Hrs., Excellent.....\$8,500
5,000 lb. A/C, LPG, 3 Stage, Very Good Cond.....\$5,000
5,000 lb. CAT, LPG, Sideshift, Very Good Cond.....\$5,000
4,000 lb. Clark, LPG, 3 Stage, Very Good Cond.....\$4,000
2,500 lb. Whites (2) LPG, One Fair Other Very Good...\$1,800 & \$3,000
2,500 lb. White LPG, Very Good.....\$3,000

ELECTRICS

7,000 lb. CAT, \$4,000, 6,000 lb. Baker \$4,000 Both Good
4,000 lb. Pettibone 3 Stage Very Good Cond.....\$5,000
4,000 lb. Walk Behind, 3 Stage, Very Good Cond.....\$4,000
3,000 lb. CAT, 3 Stage, Excellent Cond., 1,500 Hrs.....\$7,000
3,000 lb. Yale Reach Truck, 3 Stage, Low Hrs., Very Good Cond.....\$7,500

JERRE MARTIN REPAIR

391 N. Farmersville Rd., Ephrata, PA 17522 (Just minutes off RT 222)

(717) 859-3283

No Reasonable Offer Refused Custom Repairs On All Makes Industrial & Farm Equipment



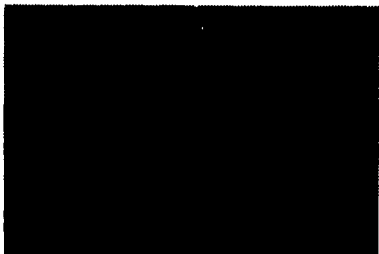
Ford 555A XL Boom \$12,500



CAT 955L Rebuilt Motor 90% UC \$22,000



JD 510C Good Cond. \$20,000



Mitsubishi WS 400 4 in 1 \$22,000

WE ARE BUYERS FOR CONSTRUCTION EQUIPMENT NEEDING REPAIRS

238 Detroit Diesel, running motor.....Best Offer
Case W26B, Good Cond.....\$18,000
Clark 5000 Lb. Forklift, LP Gas, Hard Rubber...\$1,500
'81 JD 310A Backhoe, Orops, Excel.....\$12,000
JD 350C Crawler Loader, Good Cond.....\$13,000
'81 JD 450C, Crawler Loader Backhoe.....\$16,500
JD 455E New Tracks, Good Cond.....\$22,000
JD 644B 3 Yard, Good Cond.....\$22,500

FARM TRACTOR PARTS

USED - NEW - RECONDITIONED

JUST ARRIVED FOR SALVAGE

AC 175 JD 1020
JD MI MI 205
JD 1010 MI 1105

Wengers of Myerstown

814 SOUTH COLLEGE STREET (ROUTE 501) MYERSTOWN, PA 17067

800-451-5240

MON.-FRI. 7:30-5:00

SAT. 7:30-12:00



The Best Buys In Quality Used Tractors & Equipment

Used Tractors

- Massey-Ferguson 1105 w/Cab & A/C - Good Condition! Ready For Work!
- Massey Ferguson 3630 2wd w/Cab & A/C (2200 hours), Coming In Soon!
- Massey-Ferguson 690 w/Cab & A/C (1237 hrs) **SOLD** emely Good Condition!
- Massey-Ferguson 399 4WD w/Cab, A/C & Loader - Coming In Soon!
- Massey-Ferguson 230 Gas - Very Good Condition - Ready For Work!
- International 1086 w/Cab - Coming In Soon!
- Massey-Ferguson 1086 w/Cab - Coming In Soon!
- Massey-Ferguson 135 Gas w/Power Steering (1500 hours) - Good Condition Ready For Work!
- Massey-Ferguson 383 2WD w/NEW Farmhand (Dem **SOLD**, 135 hours)
- International 966 Fender Tractor (2600 hours) - One Owner - Very Good! - Coming In Soon!
- Massey-Ferguson 20 Industrial Tractor & Loader **SOLD** Good Condition!
- Massey-Ferguson 135 Diesel - Good Condition - Ready For Work!
- Allis-Chalmers 6080 4WD Fender Tractor w/AC 460 Loader- One Owner!
- Massey-Ferguson 290 w/MF 236 Loader - Very Good Condition - Ready For Work!
- Massey-Ferguson 274 w/Loader - Very Good Condition - Ready For Work!
- Massey-Ferguson 250 Diesel (1800 Hours) - Very Good Condition - Ready For Work!
- International 885 4WD w/2255 Loader (2200 hrs) **SOLD** Good Condition!
- International 856 w/Year Around Cab - Good Condition - Ready For Work!

Skid Steer Loaders

- New Holland L553 - Good Condition - Ready For Work!
- Case 1845 - Ready For Work!

Used Equipment

- New Holland 472 Mower-Conditioner - Excellent Condition! Ready For Work!
- International 1190 9 Ft. Mower-Conditioner - Coming In Soon!
- New Holland 499 Mower-Conditioner - Good Condition - Ready For Work!
- New Holland 474 Mower-Conditioner - Very Good Condition - Coming In Soon!
- Massey-Ferguson 33 Grain Drill (17 Disc w/Grass Seeder) - Very Good Condition - Ready For Work!
- New Holland 782 Forage Harvester w/Two Heads - Good Condition - Ready For Work!
- New Idea 483 Round Baler w/Electric Wrap - Very Good Condition- Ready For Work!
- Massey-Ferguson 550 Combine w/15 Ft. Flex Head - Ready For Work!
- New Holland 883 Round Baler (Twine) - Very **SOLD** Condition!
- International 720 Forage Harvester with Two Heads - Good Condition - Ready For Work!
- New Holland #8 Forage Box on 234 Gear - Two In Stock! - Ready For Work!
- John Deere 328 Square Baler w/40 Ejector - Excellent Condition - Ready For Work!
- New Holland 258 Rake - Two In Stock! - Ready For Work!
- New Holland 802 Harvester with Two Heads - Very Good Condition - Ready For Work!

New Holland, New Idea, and Claas Round Balers In Stock and Ready to Tackle Your Hay Harvesting Needs!

Also Our Award-Winning Parts and Service Departments Are Ready and Able to Serve You With A Huge Parts Inventory and Factory-Trained Service Staff!

Available Exclusively At:

Meyers Implements, Inc.

Serving The Agricultural Community Since 1937

400 North Antrim Way (US Route 11) Greencastle, PA 17225

Phone: (717) 597-2176

Note: Availability of All Items Is Subject To Prior Sale.



NEW HOLLAND