

**JD 7' Hay Pickup Head**

Newly Painted  
Avg. Condition  
717-336-6458



**USED EQUIPMENT**

- Hesston 530 Baler
- Gleaner R52 Combine
- Gehl 700 Forage Harvester w/2R Corn Head
- JD 620 Tractor
- Oliver 1855
- White 2-105
- White 8600 Combine
- White 445 11' Disc Chisel
- JD 1610 10' Chisel Plow
- MF 4X Semi Mount Plow
- NI 135 Bu. 212 Spreader
- NI 362 Manure Spreader
- NI 3632 Manure Spreader
- NH 304 Slurry Spreader
- JD 216 Forage Box
- Grove Forage Box
- Gehl Forage Box
- NI 5112 Mower Conditioner
- Hesston 1160 14' Windrower
- White 5100 6R Planter (Sharp)
- NI 323 Picker
- NH 315 Baler w/Thrower
- Hesston 7155 Forage Harvester
- JD 18' disc harrow
- Brillion 10' Cultmulcher
- Brillion 10' Seeder

**STANLEY'S FARM SERVICE**

RD Box 46  
Klingerstown, PA  
717-648-2088  
WE ALSO STOCK NEW VICON

MF 1105 Tractor w/Cab  
Krause 1577 18' Folding Disc, New  
Disc Bearings & Paint  
Gehl 7210 TMR Mixer  
Hesston 7155 Forage Harvester  
6' Pickup, 2 or 3RN Head  
MF 124 Baler w/Thrower & Applicator  
Gehl 99 Forage Blower  
*All equipment in very good condition.*

Blair Co., PA  
814/793-3559 • 814/793-3874

Cub Cadet 2084 w/60" Deck

**USED EQUIPMENT**

- Kuhn 200 Mower Conditioner
- Kuhn SC300 Mower Conditioner
- NI 484 Round Baler
- Gehl 1500A Round Baler
- 72" Manure Forks For 2250 Loader
- JD Forage Blower
- Cub Cultivators
- NI Drop Spreader
- NI 555 Baler
- Mott 5' Mower
- Kuhn GF5000 17' Tedder
- Befco 090 Mower
- Tye 7' Pasture Pleaser, 8x10 Drill

**New Woods 3180 Mower**  
1000 RPM w/ Solid Tires

**BIGGS INCORPORATED**  
190 Biggs Hwy., Rising Sun, MD  
410-658-5531



© 1996 CASE CORPORATION

**NEW EQUIPMENT**

- 8610 Agco Allis Tractor, AWD, Cab, Air, Heat,
- Arts-Way Ultra Mix 250
- Cagle Sprayers 300 gal. & 750 gal. Model in stock
- Sukup 9400 6R Cultivator w/Guidance System
- Agco-Allis 5670 2WD
- Hydra-Mac 1300 Skid Loader
- M&W Round Baler
- Kidd Bale Chopper
- Marliss No-Till Drill 10' Pull Type
- Landoll 6R Corn Planter
- Landoll 4R Corn Planter
- Wood Mowers
- Deutz-Fahr Hay Equip.
- Kuhn Hay Equip.

**Used R60 Combine w/15' Flex G Head, 630 Corn Head**

**USED EQUIPMENT**

- Woods 0121 Mower
- AC Planters, 2 Used 630's & 2 Used 480's
- Furst Chain Harrow w/cart 20'
- 1 Vicon, KM 281 Mower Conditioner
- 751 Cagle Sprayer w/Foam Markers, Monitor & Hyd. Boom Lift.
- 5670 2W Tractor, Low Hours
- Mott 6' Field Mower
- JD Rake w/wheel at tongue
- N5 Gleaner combine w/630 C-Head, 15' grain head

**B. EQUIP. INC.**

8422 Wayne Highway  
Waynesboro, Pa. 17268  
717-762-3193

7AM - 5PM Mon.-Fri.  
7:00 AM 3 PM  
GLEANER®

Take Exit 20B  
Off Of 83, 5 1/4 Mi. West  
To Belmont Farm.

Farmall 350 Gas, Fast Hitch, Pwr. Str.,  
Exc. Rubber and Rims  
**\$1,800**  
Financing & Trucking Available  
**410-833-9091**

**TRUCKS**

- 1979 Chevy C30 Single Rear Wheels, Dump Body, Great For Firewood or Mulch .....\$2,500 New Insp.
- 1984 Int. School Bus Side Lift Gate, Very Good Condition, 26,000 GVW, Runs Great.....\$1,800
- 1977 GMC Suburban Body Rough, Runs Good, 9/96 Insp.....\$500
- 1975 Ford 150 - Parts or Fixer Upper 300, 6 Cyl.....\$400
- 1978 Chevy Parts & Truck Front Clip, Cab & Chassis Trans, Some Sheet Metal Is New.....\$200
- 1976 Ford C-600 16' Stake Body, Brand New Front Tires, It Runs Good...\$1,800
- 1956 Ford F6 Dump Body, Runs Good, Needs Brake Work.....\$1,000
- 1953 Ford F-3 Dump Rough, Runs.\$250

Berks Co. **610-689-5230**  
Offer or Trade Considered

**USED EQUIPMENT**

- (2) JD 6 Row Corn Planters
- (2) White 5100 Planter, 6 rows
- Agco-6690 4WD Cab w/Loader 700 hrs.
- Agco 6690, 4WD, cab, 250 hrs.
- Ford 1120 tractor, 4WD
- JD 2440 w/ loader
- NH TR 70 Combine w/Heads, Exc. Condition
- JD 2040 Tractor Loader, 536 hrs.
- JD 850 4WD, w/ Loader
- NH 316, 326 & 575 Balers
- NH 892 Chopper 824 Head
- NH 892 Chopper w/3 Row New-Pick Up
- NH 474 Haybine
- NH 472 Haybine
- NH 1499 SP Haybine
- New Holland 499 Haybine Hydro-Swing
- (2) NH 489 Haybine
- 1-Year Old Knight 3300 w/Hay Kit
- 1993 New Idea Hay Rake, New Cond.
- 10' Rau Tiller, Exc. Cond.
- New Idea 3825 and 212 Spreader, Good Cond.
- N. Tech 2300 Liquid Spreader, Good Cond.
- Harsh 290 Feeder Wagon, Exc. Cond.
- NH 269 Baler w/Thrower, Good Condition
- New Idea 1994 4845 Round Baler, Like New

**"Give Us A Try Before You Buy"**

**J. DAVID MULLINX & SONS, INC.**  
(410) 489-4363 — FAX (410) 489-7634  
14420 Howard Rd., Dayton, MD 21036

**VAN DALE** Dependability through Quality

Division of J-STAR Industries, Inc.

**LIQUID MANURE SPREADERS**



**SLINGER VACUUM**

2700 & 3300 Gallon Models with full-length internal auger  
2700 & 3300 Gallon Models With reliable Jurup vacuum pump

**USED EQUIPMENT**

- 2120 Knight w/Scales Complete
- Knight Little Auggie w/Scales, Portable
- 3300 VD Slinger Rank
- VD Lagoon Pump, Demo
- 2120 Knight Mixer, 100 cu. ft. stationary
- Dynavent Bedding Chopper, 11 HP Honda, good cond.
- Water pump w/Honda Engine, set up for propane
- Amish storm front carriage - \$1,600

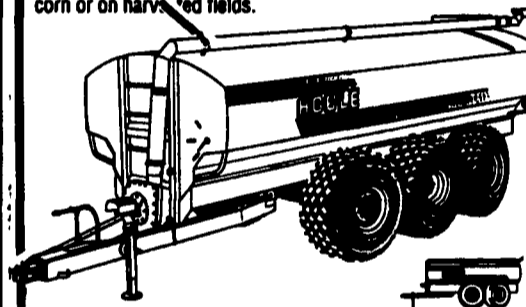
We Will Service All Brands Of Electronic Scales & Most Brands Of Mixers

**MILLCREEK FENCE & FARM SYSTEMS**

2285 Old Philadelphia Pike  
Lancaster, PA 17602 — (717) 396-8987

**LIQUID MANURE SPREADER**

WITH FLOTATION TIRES TO MINIMIZE SOIL COMPACTION  
Available with complete line of spreading tool bars and precise flow control to spread manure the ecological way eliminating spray drift and reducing odors. Our tool bars are designed to apply hog or dairy manure on growing fields, between rows of corn or on harvested fields.



4-6 OR 8 WHEEL SPREADERS WITH POWER STEERING - 3000 TO 6000 US GAL.

SPREADERS WITH SINGLE AXLE ON TRAILERS - 2300 TO 6000 US GAL.

- "V" shape bottom for more complete clean out.
- Standard exterior finish: epoxy primer and urethane paint.
- Low profile tank for maximum visibility and stability.

**HOULE FARM EQUIPMENT MANUFACTURER**

**SPREADERS IN STOCK FOR SALE NOW**

"We're Here To Serve You"

**SNOOK'S EQUIPMENT**

RD 3, Box 130, Mifflinburg, PA 17844  
717-966-2736

Ask For Ernest Or Dean

**YORK COUNTY FARM & INDUSTRIAL EQUIPMENT CO., INC**

Box 222 EMIGSVILLE, PA  
(717) 764-6412 OR (717) 764-5115



**TRACTORS**

- Kobelco 4 Wheel Articulated Payloader
- Dynapac Roller
- Ford Jubilee
- Ford 600
- Ford 1600
- Ford 5610 Special II w/rollbar
- Ford 6700
- Ford 7700
- JD 650 w/mid mount mower
- Kubota L3350 4WD w/Loader & backhoe
- Kubota L2350
- Kubota L245 w/loader
- Int 786 WF
- IH 886 WF/part cab/soft sides
- Farmall Cub
- Farmall Super A
- Farmall 100 w/mid-mount mower

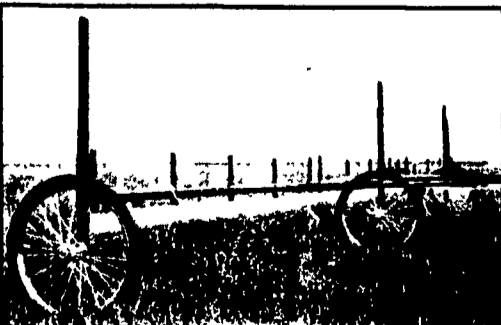
- Farmall A w/mid-mount mower
- Farmall 130 & 140
- MISC.
- New Bale Thrower Wagons 9x18
- New Woods 12' turf bat wing
- JD A 2600 4x semi-mount plow w/cylinders
- Int 4R Front Mount Cultivator
- Glenco 3Pt. 6R No-Till Cultivator
- Brillion 12' cultipacker (new)
- New 3 pt. Fert. Spreader
- 3 pt Stone Rakes
- 3 pt Box Scrapers
- Regular & Heavy Duty 3 Pt. Scraper Blades
- New Woods 3180 Batwing (Special Price)
- New Woods Rotary Mowers 5' to 15' in stock

LOADERS FOR VARIOUS TRACTORS  
TILLAGE TOOLS & CULTIVATORS

Large Selection of New Used & Reconditioned Equipment & Tractors

**IN STOCK!**

IF YOU WANT TO KEEP PEACE WITH YOUR NEIGHBORS & KNOCK-OUT TOUGH WEEDS - DONT SPRAY DO IT SAFELY WITH A SUPER SPONGE FROM BINKLEY & HURST BROS. INC.



**CYLINDRICAL SPONGE APPLICATOR PUTS MORE HERBICIDE ON WEEDS, WITHOUT DRIPPING OR DRIFT!**

Also Hand-Held Units For Spot Work!

KNOCK OUT - Johnson Grass, Thistles, Pig Weed, Crabgrass, Wild Mustard, Etc.

\* Even Distribution Sponges (30 Day Warranty)

\* "See-Through" Tank

\* Sight Glass Manifolds For Precise Flow Metering

\* No Dripping Or Drifting - For Use In Corn, Wheat, Soybeans, Vegetables, Etc.



**WEED WIPER**

Destroy Tall Weeds In Production Fields, Pastures And Row Crops... They Work!  
**IN STOCK - Come & See!**

**CONTACT HERBICIDE APPLICATOR**

- \* 30' Super Sponge
- \* Heavy Duty Frame (1 Yr. Warranty)

**BINKLEY & HURST BROS. INC.**

133 Rothville Station Rd.  
Lititz, PA 17843  
(717) 626-4705  
1-800-487-2978

