

87 Kenworth dump T800, aluminum body 65,000GVW; Case 1150 crawler/ loader. (410)692-9314.

'88 Chevy C30 single rear whl w/9' Reading utility body, 292.6 cyl., HD, 4 spd, PS, PB, AM-FM, 9,000 GVW, 63,000 one owner miles, dark blue, \$7,900. 717-733-2873

85 Volvo White, 400 Cat, 13-spd, air ride; 89 Gilmore dump trailer, 34x32, triaxle, air ride, roll-over tarp. 215/257-3852.

88 Hurst Tandem Dually Equipment Trailer, 16' deck over, 4' beavertail, 8' wide, 12-ton GVW, good condition, \$2600. 410/399-2515.



1976 Tibbrook Dump Trailer
30' Alum, 20" Rubber, Good Cond.
\$6,500
(410) 557-9559
No Calls After 9:00 P.M.

NEWAY Pusher Axle, 20,000lb, 15" rubber, good condition, \$1100. 717/949-3582.

'88 GMC 2500, 3/4 ton, 350 5 spd, PS, PB, air, 7,200 GVW, 50,000 miles, one owner, new radials, \$7,900. 717-733-2873

'89 FORD XLT Lariat F250, super cab, 460 EFI, auto, PS, PB, PW, PDL, cruise, tilt, air, AM-FM cassette, 8,800 GVW, towing package, 1 owner, excellent condition, \$10,995. 717-733-2873

- '78 Ford LN700 3208 Cat 5 Spd., 18' Reefer Box Standby.....\$3,850
- 1983 Mack MR 25 Yard Dumpster Garbage Truck or Will Separate 237 5 Spd., 44 Rears\$8,500
- Mack Tandem with Prentice Log Loader.....\$4,500
- Dynahoe Backhoe Loader Needs Work.....\$4,500
- Link Belt LS78 Cable Crane 40' Boom.....\$6,000
- '82 Mack MC Tandem 20' Reefer Diesel Unit, Truck Has New 237Eng. Nice Clean Truck..... Call
- Dia. Reo Tandem Dump 238, 4x4 Trans, Rockwell 44 Rears.....\$4,850
- (2) Dia. Reo Tandem C & C 238, 13, Spd. 44 Rockwell Rears, Good For Farm Trucks, For Honey Tanks\$2,750 & \$3,850
- '79 Freightliner Conv. 400 Cummins B C 13 Spd, Air Ride With Product Pump.....\$9,500
- '82 GMC Reefer 16' Body, 8.2, 5 Spd, 51,000 Miles.....\$7,500

We Buy & Sell Truck Parts
If you have trucks for parts or running trucks, call.
HAP'S TRUCKS & PART
1-800-839-3338
Fax 610-944-0758

'89 Ford XLT Lariat, F150, super cab, 302 EFI, 5 spd, PS, PB, air, AM-FM, dual tanks, 64,000 one owner miles, new radials, blue, excellent condition, \$9,900. 717-733-2873

'89 GMC 3500, dual whl, cab & chassis, 60" CA, 350 HD, 4 spd, PS, PB, AM-FM cassette, dark blue, 79,000 miles, \$7,900. 717-733-2873

'90 Dodge 150, 1/2 ton, 318 EFI, auto, PS, PB, AM-FM, 41,000 one owner miles, new radials, excellent condition, \$7,900. 717-733-2873

'90 Ford XLT E350 club wagon, 15 passenger, 351 EFI, auto, PS, PB, PW, PDL, cruise, tilt, dual air & heat, AM-FM cassette, blue & silver, 57,000 miles, new radials, \$11,900. 717-733-2873

'92 Chevy Tahoe S10, ext. cab, V6, 5 spd, PS, PB, AM-FM cassette stereo, 30,000 miles, red & silver, excellent condition, \$8,975. 717-733-2873

'93 F-350 XLT diesel at 4WD crew, cab, excellent cond. cal. phone, \$23,500. (717)445-8251.

93 Ford F350 XLT, 4WD, dually, flatbed, gooseneck setup, 460, AT/AC, loaded, \$15,500 Clarks Auto Sales, 717/921-8833.

'94 Ford XL F150 HD, 300 EFI, 5 spd, PS, PB, AM-FM, dual tanks, 6,250 GVW, new radials, excellent condition, black, \$9,900. 717-733-2873

9' Eby alum. livestock cattle body w/double deck rail and alum. flooring. (717)349-7281.

1979 Peterbilt, CO, 13 speed, 400 Cummins, nice condition, road ready, \$8,500. (717)532-8363.

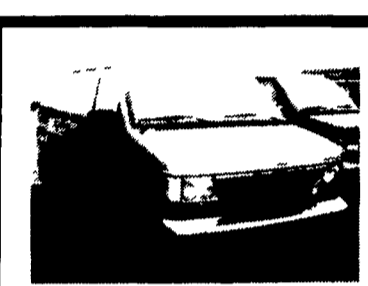
Brockway Tri-axle dump, 18' alum body w/6' sides, 0 miles on rebuilt motor, must sell, best offer, 908/591-2726.

Chevrolet C30 1983, 10,000 GVW, 12' flatbed w/ sides, 65,000 miles, \$4500. 215/297-8079.

Coal trucks: '50 Dodge, '64 International, '52 International, \$1500/ea Bill Styer 208-883-8719 afternoon or evenings.

ENGINES FOR SALE Cummins 160. DETROIT ENGINE: 6V53 rebuilt, never run; 318, low miles Silver 8V92; V671 & 671, Cat 3208; Int. DT466. Mack E6300; 237; 285; 673

Gas Engine: Dodge 361; Ford 391; 361; Chevy 366; 427, 350. Many other parts at reasonable prices. HAP'S TRUCKS & PARTS 1-800-839-3338 Fax 610-944-0758



1995 Ford E150 XLT, 8 pass, 351 Eng., ATO, Dual AC, Dual Heat, Privacy glass, PW, PL, P Mirrors, Cass., Tilt Steering, Cruise, Delay wipers, Sandstone Stock #2152



1992 GMC STX G35, Extended, 15 pass, 454 Eng., AT/O, 52K miles, AC, Privacy glass, PW, PL, P mirrors, Cass., Tilt, cruise, Delay wipers, Tan/Creme Stock #2190



1994 Dodge LE B350, 15 pass, 360 Eng., ATO, Dual AC, Dual Heat, Privacy glass, PW, PL, P Mirrors, Cass., Tilt, Cruise, Delay Wipers, also 1995 Dodge LE 15 Pass, Med. Blue Stock #2158 #2151



1995 GMC G25 STX, 8 pass, 350 Eng., AT/O, Dual AC, Dual Heat, Privacy Glass, PW, PL, P mirrors, Cass., Tilt, Cruise, D. Green Stock #2171



1995 Ford E350 XLT, 12 pass, 351 Eng., ATO, Dual AC, Dual Heat, Privacy glass, PW, PL, P mirrors, Cass., Tilt, Cruise, Delay wipers, D. Blue Stock #2162

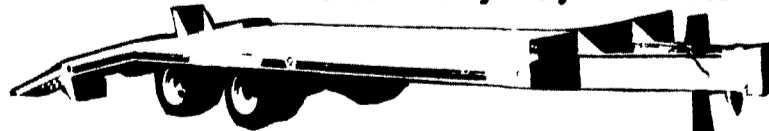


1994 Ford E350 XLT, 15 pass, 351 Eng. AT/O, Dual AC, Dual Heat, Privacy glass, PW, PL, Tilt, Cruise, Delay Wipers, D. Blue, Cass., Stock #2194

717-354-3199

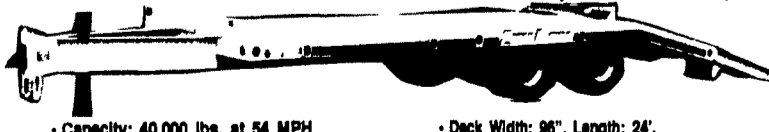
New Eager Beaver TRAILERS

MODEL 10HA: 10 Ton Heavy Duty Air Brakes



• Capacity: 20,000 lbs. at 54 MPH • Trailer Weight: 5,800 lbs. • Tires: Eight
• Deck Width: 96", Length: 24', • Overall Width: 96", 8.75x16.5 (E)
Height 32" Length: 29'6"

MODEL 20HAL: 20 Ton Air Brakes, Low Profile



• Capacity: 40,000 lbs. at 54 MPH • Deck Width: 96", Length: 24',
• Trailer Weight: 7,050 lbs. Height: 34"
• Overall Width: 96", Length: 29'6" • Tires: Eight 215/75R17.9 H Radial

BINKLEY-HURST BROS. INC.
Fax 717-626-0996

133 Rothsville Station Rd.
P.O. Box 0395
Lititz, PA 17543-0395
(717) 626-4705

Farm Plan
1-800-487-2978

R & R CAR AND TRUCK CENTER

1657 Rohrerstown Road, Lancaster, PA



1988 IHC S1954 Toter Package, DT466, 215 HP, 5 & 2 Spd., P/S, A/B, A/C, 35,000 GVW, Will Stretch PRICED TO SELL



1986 Peterbilt 349, 3308 Ct, 260 HP, 9 Spd., A/B, P/S, A/C, Air Ride, 32,000 GVW, 20' Reefer with Tk., RD-1 & Electric Stdb, Very Clean Call for Details



1980 FRT/LNR Conv. Sleeper, 350 CAT, Jake, 13 Spd., P/S, FRT/LNR Air Ride, Alum Wheels, 40' Sleeper - Eng Using Oil, Mechanic Special \$5,900

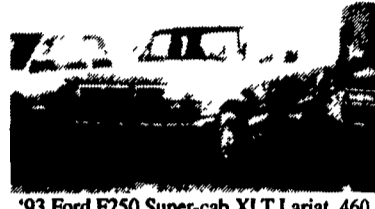
Call Ray Leed 717-560-4901

USED TRUCKS



'94 Chev. 2500 4x4 Ext. Cab, Silverado, 350 FI, 5 Spd., PS, PB, AC, Cruise, Tilt Wheel, PW, PDL, AM & FM Stereo Cass., Rear Sliding Window, 21,000 Miles

\$21,500



'93 Ford F250 Super-cab XLT Lariat, 460 FI, Auto, PS, PB, A/C, PW, PDI, Cruise, Tilt Wheel, AM & FM Stereo Cass., Rear Sliding Window, Dual Tank 16,000 Miles Local One Owner, Like New

\$17,900

Financing Available

MARTIN'S AUTO SALES

1025 W. Main St., New Holland, PA 17557
(717) 656-6621

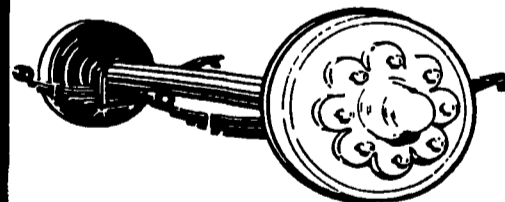
See Binkley & Hurst For Our High Quality Pro-Tow Trailers (Our Own Manufactured) Built Better Because We Know What It Takes!

10,000 GVW 16 Ft. With And Without Beavertail



SEE US FOR ALL YOUR PARTS NEEDS - WE STOCK A LOT & CAN ORDER FOR QUICK DELIVERY! BUMPER TRAILER & PINTLE HOOKUP TRAILERS Purchase A Well Built Quality Trailer From Binkley & Hurst Today.

SEE US FOR YOUR AXLE REPLACEMENT PARTS AND COMPLETE AXLE ASSEMBLIES



Check Our Prices On Receiver Hitches!

2,000-22,500 Lb. Axles & Suspensions Metal Trailer Components Lights & Electrical Supplies Brakes, Tires & Wheels Jacks, Couplers & Hitches Hardwood Accessories & Much More

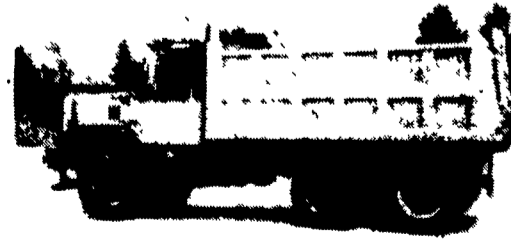
Ask For Dean

Buy Where The Quality Is #1 At The Right Price

Binkley & Hurst Bros. Has A Good Heavy Duty 10 Wheel Dump Truck Ready For Work!

1988 IH 5000 Paystar

315 Big Block Cummins 8LL Fuller Transmission 52000 Lb. Rear Axle



14 Foot J&J Rock Body Dump, Only 210,000 Miles Very Good Condition - Ask For Dean

BINKLEY-HURST BROS. INC.
Fax 717-626-0996

133 Rothsville Station Rd.
P.O. Box 0395
Lititz, PA 17543-0395
(717) 626-4705

Farm Plan
1-800-487-2978