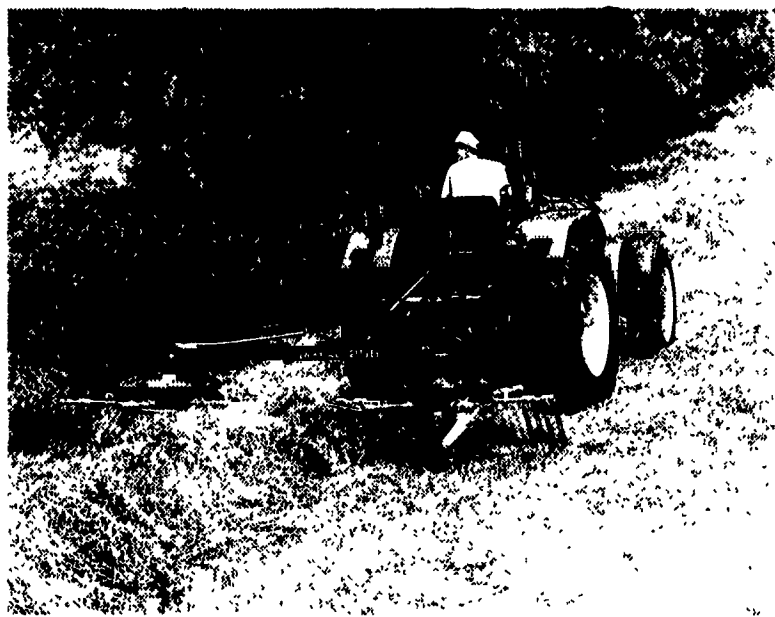


# YOUR BEST HAY



**NEW HOLLAND**



## A TEDDER AND A RAKE

The Model 255 rake tedder is a flexible machine—it's the tedder that also rakes. The "255" can:

- Rake a swath into a windrow.
- Rake two windrows into one.
- Turn windrows for faster drying.
- Move crop away from fences or borders.
- Ted a 10-1/2-foot area to fluff up wet, matted-down crop for quick drying.

And, you can change the "255" from one function to another **without tools!** Stop by for a demonstration.

## ALL-NEW ROUND BALER



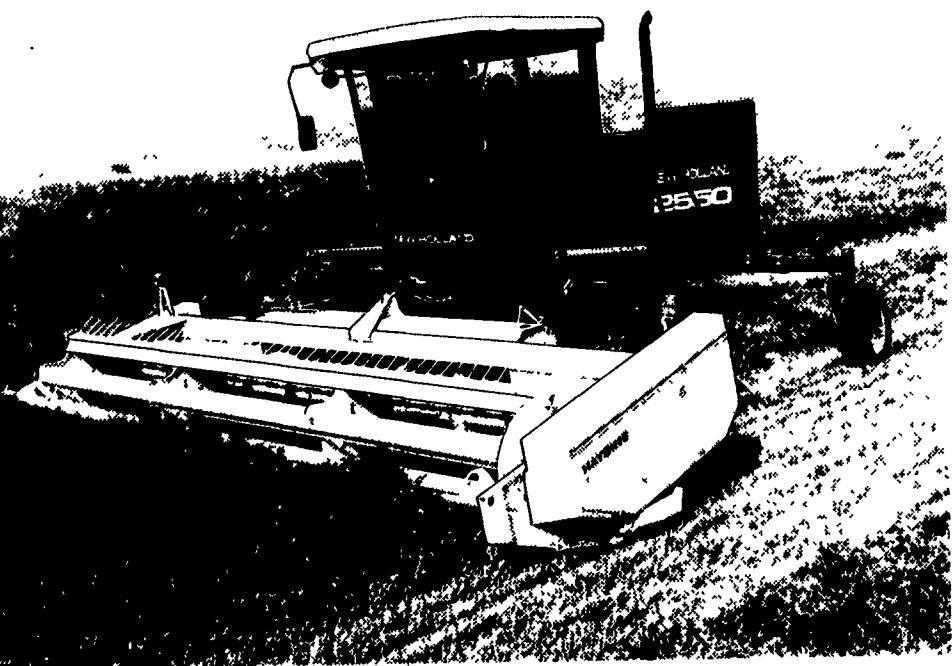
## LIFE'S TOO SHORT FOR IMPERFECT BALES

You work hard every day and always give your best. So shouldn't you expect the same from your round baler? Introducing the Model 644 Roll-Belt™ round baler from New Holland. It makes perfect bales every time.

- Roll-Belt™ design makes dense, uniform 4'x5' bales weighing up to 1,000 lbs.
- Available Bale Command Plus™ monitoring system takes the guess work out of making great bales
- Stronger backbone on Super Sweep pickup to handle tough crops without clogging
- Available wide pickup for large windrows

Stop in today and check out the new Model 644. After all, don't you think you deserve the best?

**SEE YOUR NEAREST NEW HOLLAND DEALER**



## SPEEDROWER® DEPENDABILITY

The Model 2450 and 2550 have rugged Speedrower® construction and a lot of convenience and performance features that make you extra productive:

- 87- or 100-hp Genesis™ diesel engines
- Smooth hydrostatic transmissions
- Floating 20-inch diameter auger
- 102-inch chevron-design rolls
- Unmatched view of the header
- A quiet, comfortable cab
- Easy access to all service points

See the Speedrower windrowers. Stop by and get all the details.



**NEW HOLLAND**