

**OK City Feeder Cattle**

OKLAHOMA CITY, OK  
MAY 1, 1996

Compared to Monday of last week: Feeder cattle steady to 1.00 lower. Stocker cattle steady to 2.00 higher. Demand good for both stockers and feeders although buyers remain fairly selective for best kinds. Quality of the supply much improved from last week with large percentage average to attractive. Weigh condition favored sellers with cattle in average to full condition, few gaunt and conditions fuller than last week. Feeder flesh mostly medium; old crop stocker flesh thin to very thin. Few isolated sales of fleshy new crop calves 8.00-10.00 below thin old crops quoted in ML 1 grade. Demand improved with Friday and Monday's cattle futures limit up trade. Downturns in grain markets the stabilizing factor as rains in cornbelt improved outlook for commodity traders. Rain forecasted for Sunday and Monday in the Oklahoma wheat belt did not materialize as traces were the most common reading. Slaughter cows and bulls steady to 1.00 higher. Demand good from packers. 737 cows and bulls sold 70 percent going to packers. Receipts this week 8,335; last week 7,100; last year 18,886. Supply consisted of 74 percent yearlings over 600 lbs; 17 percent calves and yearlings under 600 lbs; 9 percent cows and bulls. Prices follow with weighted average weight and price in parenthesis. Feeder Steers: Medium and Large 1 300-400 lbs (350 lbs) 61.50-67.50 (64.31); 400-500 lbs (450 lbs) 57.00-62.00 (61.63); 500-600 lbs (550 lbs) 55.50-60.50 (58.75); 600-700 lb stockers (650 lbs) 54.00-57.50 (54.32); 600-700 lb feeders (650 lbs) 50.50-55.50 (52.83); 700-800 lbs (750 lbs) 47.00-52.50 (50.25); 800-900 lbs

(850 lbs) 47.00-51.25 (49.06); 900-950 lbs (934 lbs) 47.25-49.00 (48.51). Holsteins: Large 2 load 900 lbs 30.00. Feeder Heifers: Medium and Large 1 350-400 lbs (364 lbs) 44.00-50.00 (47.92); 400-500 lbs (450 lbs) 44.50-49.25 (47.14); 500-600 lb stockers (550 lbs) 45.00-49.25 (47.88); 500-600 lb feeders (550 lbs) 43.00-46.75 (44.89); 600-700 lbs (650 lbs) 45.50-48.00 (46.95); 700-800 lbs (750 lbs) 45.00-48.75 (46.70); 800-900 lbs (850 lbs) 43.00-47.00 (44.60). Slaughter Cows: Cutter, boning and breaking Utility average dressing 27.00-29.00, Utility up to 31.50; high dressing 30.50-34.00; low dressing 24.50-28.00. Canner and low Cutter 21.50-24.25. Estimated dressed cost at Oklahoma National Stockyards: Cutter 59.45; Boning Utility 60.00; Breaking Utility 57.70; Canner 56.90. Bulls 67.25. Slaughter Bulls: Yield Grade 1 1400-2000 lbs average dressing 36.75-38.00; high dressing 38.00-40.00; low dressing 34.00-37.50. Replacement Cows: Pretested for bangs, pregnancy and age Medium and Large 1 Average quality single head sales: 2-3 years old 750-900 lbs 5-7 months bred 300.00-370.00. Pairs: Medium and Large 1 3-4 yr old 700-1050 lb cow 100-200 lb calf avg quality 410.00-460.00; 2-4 yr old 700-900 lb cow 50-100 lb calf low quality 360.00-390.00; 5-7 yr old 950-1200 lb cow 100-300 lb calf avg quality 425.00-470.00; 5-7 yr old 800-1050 lb cow 100-200 lb calf low quality 340.00-370.00.

**New Wilmington Livestock**

NEW WILMINGTON, PA  
APRIL 29, 1996

CATTLE 188... PDA ...Compared with last Monday's sale...cows steady to 1.50 higher.

STEERS: Choice and Select 920/1300

lbs. 47.75-52.25, few Standard 30.00-37.75.

HEIFERS: couple Standard 29.00 & 29.50.

COWS: Breaking Utility and Commercial 30.00-34.75, Cutter and Boning Utility 26.50-32.25, Canner and Low Cutter 22.00-26.00. Shells down to 15.00.

BULLS: few Yield Grade No. 1 1350/1720 lbs. 38.75-39.75, few No. 2 1625/1900 lbs. 30.25-35.00.

FEEDER CATTLE: STEERS: few Large Frame 450/775 lbs. 47.00-53.00, few Medium Frame No. 1 375/700 lbs. 36.50-46.00; HEIFERS: Large Frame No. 1 400/625 lbs. 37.00-41.50, Medium Frame No. 1 350/650 lbs. 30.00-37.00, Large Frame No. 2 350/675 lbs. 26.00-36.00; BULLS: few Medium Frame No. 1 450/625 lbs. 32.50-42.50.

CALVES 126...VEALERS: Standard and Good 80/130 lbs. 20.00-43.00, Utility 50/75 lbs. 5.00-20.00.

FARM CALVES: No. 1 Holstein bulls 95/115 lbs. 87.00-91.00, 80/90 lbs. 30.00-70.00, No. 2 90/120 lbs. 44.00-72.50; few No. 1 Holstein heifers 100/120 lbs. 117.00-127.50, few No. 2 80/120 lbs. 45.00-110.00. Few beef cross bulls and heifers 90/135 lbs. 45.00-87.50. HOGS 303...Barrows and gilts 1.75 to 3.00 higher.

BARROWS AND GILTS: US 1-2 210/260 lbs. 51.75-53.00, few to 53.50, US 1-3 220/260 lbs. 48.75-51.00, US 2-3 210/270 lbs. 47.00-49.10, US 1-3 180/200 lbs. 40.00-49.00.

SOWS: few US 1-3 325/625 lbs. 32.00-36.00, one US 3 600 lbs. 30.00, few Medium 240/480 lbs. 27.00-33.50.

BOARS: 200/575 lbs. 25.50-32.00.

FEEDER PIGS 20...Few US 1-3 55/85 lbs. 37.50-40.00, few US 2-3 25/60 lbs.

20.00-25.00. --- per head. SHEEP 57...SLAUGHTER LAMBS: Choice 50/85 lbs. 115.00-117.50, Good and Choice 50/80 lbs. 95.00-105.00. SLAUGHTER SHEEP: 12.00-60.00. GOATS 19...Few Medium and Large 35.00-50.00, Small 15.00-20.00, one Large Kid 21.00, few Small Kids 8.00-10.00. --- per head.

**Westminster Livestock Auction**

Hagerstown, Md.  
April 30, 1996

Report supplied by auction  
SLAUGHTER COWS: 89 HEAD, 1.00 HIGHER. UTILITY 31.00-35.00, HIGH DRESSING 35.00-36.75; CANNERS 28.00-31.00; SHELLY 28.00 DOWN.

BULLS: 10 HEAD, YG#2 1100-1700 LBS. 37.00-38.00; LOW DRESSING 34.25-36.50.

FED STEERS: 1.00 HIGHER. HIGH CHOICE TO PRIME 1200-1400 LBS. 55.00-58.50; CHOICE 52.00-54.00; 1180 LBS. AT 46.50; HIGH CHOICE HOLSTEINS 1150-1450 LBS. 49.00-50.25; LOW CHOICE HOLSTEINS 45.00-47.50; FEW 1500-1750 LBS. 43.00-44.25.

FED HEIFERS: STEADY. HIGH CHOICE 1100-1400 LBS. 53.50-55.00; #3&4 49.00-51.00; 950-1100 LBS. 51.00-52.00; CHOICE HOLSTEINS TO 44.75.

VEAL CALVES: 96 HEAD. CHOICE, NONE; CULL \$85-110 LBS. 29.00-36.00; 50-80 LBS. 25.00-33.00.

FARM CALVES: HOLSTEIN BULLS #1 90-120 LBS. 75.00-92.00; #2 80-95 LBS. 35.00-50.00; HOLSTEIN HEIFERS #1 80-120 LBS. 125.00-165.00; #2

75.00-110.00; BEEF X BULLS AND HEIFERS 35.00-45.00.

BUTCHER HOGS: 50 HEAD, .75 HIGHER. US#1&3 225-260 LBS. 49.00-50.00; #2&3 TO 48.50; 1 LOT 278 LBS. AT 46.00; FEW 300-450 LBS. 30.00-35.00.

STOCK CATTLE: 244 HEAD, PRICES LOWER. STEERS MEDIUM AND LARGE FRAME 200-400 LBS. 48.00-58.00; 400-600 LBS. 44.00-52.00; 600-800 LBS. 35.00-45.00.

HEIFERS: 300-500 LBS. 27.00-37.00, FEW 38.00-40.00; 500-700 LBS. 24.00-37.00; 700-900 LBS. 27.00-33.00, FEW TO 42.00.

BULLS: 300-500 LBS. 38.00-48.00; 5 HEAD 53.00-56.00; 500-700 LBS. 26.00-36.00; 5 HEAD 43.00-49.00; 700-900 LBS. 29.00-42.00.

DAIRY REPLACEMENTS: 1 LARGE SPRINGER AT 885.00; MEDIUM TO 450.00; SMALL TO 350.00.

LAMBS: 22 HEAD. CHOICE 70-100 LBS. 87.00-97.00; WOOLED 110 LBS. TO 78.00.

SHEEP: 35 HEAD 25.00-36.00. GOATS: 33 HEAD. LARGE 60.00-71.00; MEDIUM 40.00-59.00; SMALL 20.00-30.00.

PIGS AND SHOATS: 186 HEAD. BY THE HEAD, 20-30 LBS. 21.00-27.00; 30-40 LBS. 29.00-34.00; 40-60 LBS. 30.00-35.00; BY THE POUND CULLS FOR SLAUGHTER, 45-55 LBS. 25.00-34.00; FEW 70 LBS. TO 40.00.

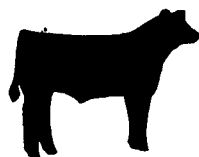
SOWS: 12 HEAD 350-500 LBS. 31.00-34.00; 500-700 LBS. 34.00-35.50. BOARS: 7 HEAD 250 LBS. TO 30.75; 350-750 LBS. 27.50-30.75.

Forney Longenecker  
Vice President/Financial Consultant  
Commodities

**SMITH BARNEY** 717-295-8914  
800-441-1997

A Member of *TravelersGroup*

SMITH BARNEY INC.  
29 East King Street  
Suite 200  
Lancaster, PA 17602-2852



**If You're Looking for Feeder Cattle**

**Call Willier, Inc.**  
**(717)626-3113**

All Cattle IBR-BVD Inoculated, Shipping Fever & Selemium Treated Prior to Delivery to Your Farm.

**NOTICE EXTENDED PARTS DEPT. HOURS EFFECTIVE APRIL 1 - JUNE 29, 1996**

**To Better Serve You During The Busy Spring Season**

MON. ★ TUES. ★ THURS. ★ FRI. 7:00 AM-8:00 PM  
WED. 7:00 AM - 5:00 PM; SAT. 7:00 AM - 3:00 PM

**BINKLEY-HURST BROS. INC.**

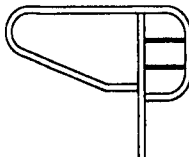
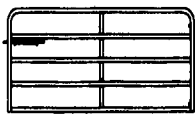
133 Rothsville Station Rd.  
Lititz, PA 17543  
(717) 626-4705  
1-800-487-2978



**LEBANON VALLEY ENTERPRISES, INC.**  
Manufacturing • Powder Coating • Precast

**Metal Fabrication**

- Free Stalls
- Stanchions
- Headlocks
- Gates
- Slant Bar Feeder Panels



All epoxy powder coated

At our plant we are capable of providing any type of heavy or light metal fabrication including welding. Contact us for a free estimate for your next fabrication job.

**Custom Powder Coatings**

Our in-line process takes your raw product through the blast cleaning, iron phosphate, and baked on powder coat finishing process all from one location. This provides the highest quality product because the product has no opportunity to be contaminated between processes. Our coatings provide excellent chemical resistance which is effective against animal wastes along with cleaning agents and other chemicals.

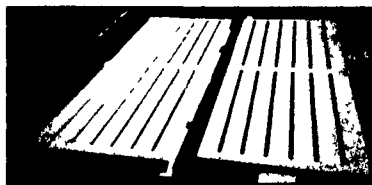
We can powder coat your existing equipment or fabricate from start to finish in our plant. A variety of colors are available for indoor and outdoor use. We also have USDA approved coatings available for the food processing industry

We will do an expert evaluation of your needs to determine the exact powder coating needed based on the conditions of use.

**Precast Concrete**

- Hog Slats\* Pillars
- Cattle Slats Beams

\*Hog Slats can also be used under calf hutches and around feeders & watering troughs.



**Contractors Can Buy Direct and Save!**

Our goal is your satisfaction. Let our knowledgeable staff use their expertise to provide you with the equipment you'll need to get the job done efficiently. Contact us for a free estimate today.

410 East Lincoln Ave., Myerstown, PA 17067 • (717) 866-2030



**'TESTED, TRIED & TRUE'**

**NC+ 3604**

- ◆ 107 Days (110 MN0, 2440 GDUs)
- ◆ Superb yield potential, especially under high management.
- ◆ Good yields of high test-weight grain.
- ◆ Healthy plants provide good stay green.
- ◆ Rapid drydown of high test-weight grain.
- ◆ Outstanding winter hardiness.

**NC+ 858**

- ◆ 107 Days (110 MN0, 2440 GDUs)
- ◆ Rapid drydown.
- ◆ Superb yield potential.
- ◆ Excellent growth and seasonal stability.
- ◆ Plants stay green and ear retention.
- ◆ Resistance to grey leaf spot.



America's down to earth seed company

**THE LATEST TECHNOLOGY FOR FORAGE PRESERVATION**



**BIOTAL PLUS**

**Biototal Plus...**

**What is it?**  
Biototal Plus is Biototal Silage Inoculant with 10% Propionic Acid added (Bacteria *Bacillus pasteurii* propionic acid).

**What does it do?**  
In addition to dropping the pH rapidly, Biototal Plus is designed to increase bunk life through the production of propionic acid - naturally and safely. Propionic acid kills molds.

**Is it corrosive?**  
Biototal Plus is designed to produce propionic acid "in the silo" after an anaerobic state (no oxygen) is reached.

**ELVIN HURSH**

820 Woodcorner Rd.  
Lititz, PA 17543

717-733-3538