

# GRO-TUFF™ PLASTIC MULCH



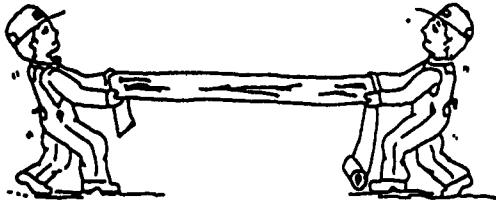
## GRO-TUFF™

Gro-Tuff is a premium quality mulch plastic made of advanced plastic resins from 100% virgin material. This high quality film reduces water loss and suppresses weeds.

Black, 4 x 2000 x 1 mil., Ship wt. 40 lbs.

QUANTITY	PRICE
1-9 rolls	\$29.00
10-19 rolls	28.00
20-35 rolls	27.00
36/skid	26.00
72 rolls drop ship prepaid	24.20

Many other sizes available.



## SUPER GRO-TUFF™

### ★ Special Introductory Offer ★

Lighter Weight; Lower Cost; Just as "Tuff", Tried and Proven.

100% Hexene copolymer; highest available tensile strength and puncture resistance. High elongation which accepts increased stressed without breaking.

Black, 4 x 2000 x .8 mil.

QUANTITY	PRICE
1-9 rolls	\$25.75
10-19 rolls	24.60
20-35 rolls	23.75
36/skid	22.85
82 rolls drop ship prepaid	21.65

Call or write for additional sizes

## AUTHORIZED GRO-TUFF™ DEALERS

### Penn State Seed Co., Inc.

#### Pennsylvania

Main Office  
Route 309, RR 1, Box 390  
Dallas, PA 18612-9781  
(717) 675-8585  
1-800-847-7333  
FAX (717) 675-6562

224 Maple Avenue  
Bird-In-Hand, PA  
17505-97C3  
(717) 295-9808  
1-800-917-7333  
FAX (717) 295-1460

#### New York

6045 Avon-Lima Road  
Routes 5 & 20  
Avon, NY 14414-9559  
(716) 226-6270  
1-800-752-0965  
FAX (716) 226-6468

Menands Market  
Albany, NY 12204-2741  
(518) 434-6521  
1-800-393-7333  
FAX (518) 434-6507

#### New Jersey

Box 1508, Hwy 206  
Mt. Holly, NJ 08060-9694  
(609) 265-8600  
1-800-385-7333  
FAX (609) 265-9449

### Silver Creek Supply

R.d. #1 Box 70  
Port Trevorton, PA 17864  
(717) 374-8010  
Fax: (717) 374-8071

# Wengers of Myerstown

## Construction Equipment

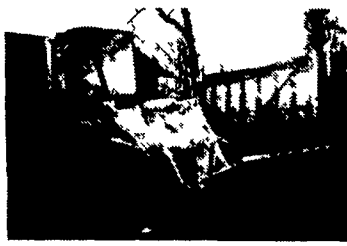
251 South Race St., Myerstown, PA 17067  
717-866-2130

HOURS: Mon.-Fri. 7:30 to 5:00; Sat. 7:30 To Noon

#### SALES STAFF

Monroe Buffenmeyer  
Lloyd Wenger  
Dave Wenger

NIGHTS  
PHONE  
717-866-7147  
717-273-9089  
FAX  
717-866-4300



1990 Komatsu WA-120, Full Cab, 1 1/2 Yd. Bucket  
\$34,500



1985 JD 555A ROPS  
\$18,500



1980 Tree Farmer C7D Skidder  
\$18,500



1979 Case 580C, ROPS  
\$12,750



1989 Ford 655C 4WD Cab, Extendahoe  
\$34,000

Lease Purchase Available On Most Machines

### BACKHOES/EXCAVATORS

1989 Ford 655C 4WD - Cab Ext.	\$34,000
1991 JCB 1400B - 4 WD - ROP - Ext.	\$23,500
1987 JD 710B w/Cab	\$32,500
1985 JD 310B - ROPS	\$16,500
1982 JD 410 w/Cab	\$14,500
1982 JD 410 - ROPS	\$14,500
1975 JD 410 w/Cab	\$11,500
1967 JD 400 Diesel - ROPS	\$8,500
1989 Case 580K - ROPS - Ext.	\$23,500
1984 Case 580 Super E w/Cab	\$19,500
1988 Case 680K w/Cab, Ext.	\$24,500
2) 1980 Case 580C ROPS	Ea. \$13,000
1980 Case 580 C - w/Cab	\$11,800
1979 Case 580C - ROPS	\$12,750
1991 Case 688 Excavator	\$29,500
1983 JD 690B Excavator	\$29,500
Long 1199B 3 Ft. w/PTO Pump	\$3,750
JCB 1400B - ROPS - EXT - 1988	\$17,500
JCB 210S - Cab - 4x4 - 4in1 - 1992	\$29,500
Case 680G - Cab - 1979	\$14,500
Case 530CK - 1985	\$8,900
Case 680L - 1989 - Cab	\$28,500

### TRAILERS

Central 21' Bogle Axle Tag Along	\$1,500
(New) Hudson 14' 5T	\$1,585 & \$1,985
(New) Hudson 18' 5T	\$2,085
(New) Hudson 18' 5T	\$2,185
Belshie 21' 6T 2 Axle	\$2,700
(New) Hudson 8x19 6T	\$3,500
Central 10T 20'	\$3,500
Trailmobile 30T - Lowboy	\$3,900
(New) Hudson 8x23 10T	\$6,500
(New) Hudson 8x25 20T	\$11,500
Wisconsin 24' 20T Tagalong	\$8,900

### TRUCKS/CARS

1984 Ford F700 45' Bucket	\$18,500
---------------------------	----------

### DOZERS

Cat D6H - ROPS - St. w/TR - 1987	\$21,500
IH TD25C - EROPS - Ripper - 1974	\$28,500
Dresser TD7G - 6 Way	\$28,500
Dresser TD8E 6 Way - 1988	\$26,500
Komatsu D37E - 6 Way - 1988	\$28,500
Case 450C - 6 Way - 1992	\$29,500
(3) Case 850D - 6 Way - 1989	Ea. \$38,500
Case 350 - 6 Way - 1973	\$10,500

### RUBBER TIRE LOADERS

Fiat 345B - Cab - 1979	\$21,500
Cat 920 - Cab - 1980	\$26,500
Komatsu WA120 Cab - 1990	\$34,500
Cat IT18 - Cab - 1985	\$43,500
JD 554D Feller Buncher - 1987	\$42,500

### CHIPPERS

Chipmore 6" Chipper - Gas	\$3,900
Chipmore 12" Chipper - Gas	\$4,500
Asplund 16" Chipper	\$6,900
Wayne 16" Chipper - Gas	\$6,900
Olathe 818 Chipper - Diesel	\$6,900
Badger - Chipper - Disc - Gas	\$6,900
Vermeer 1250 Chipper - Dsl.	\$12,500

### ROLLERS

1992 Ingersoll Rand DD24 47" Sharp	\$24,500
1987 Dynapac CC10, 41", Vib, Artic	\$11,500
Follpac 1 Ton w/Trailer	\$2,850
(3) Sheepfoot 2 Drum Tow Type	Ea. \$4,500
Eager Beaver 1 Ton	\$1,600

### CRAWLER LOADERS

JD 555A - 1985 - ROPS	\$18,500
Case 850B - 1980 - 4N1	\$18,500

### SKID STEER LOADERS

1995 Bobcat 653 Low Hrs., Sharp	\$21,500
1988 Bobcat 943, 78", 1775 Hrs.	\$18,900
1988 Case 1835C w/D100 Backhoe	\$14,500
1987 Case 1835C	\$10,500
Case 1740	\$3,750
Case D100 Backhoe File 1835C	\$4,500
1994 NH 553 - Low Hours	\$13,500

### MISC. CONSTRUCTION

1991 Vermeer V5050 Trencher	\$19,500
Vermeer 455 Diesel Trencher w/Hoe	\$6,900
1980 Tree Farmer C7D Skidder	\$18,500
Pucket Brothers T650B Paver - 1986	\$11,500
1988 Pucket Bros. T650B Paver	\$13,500
1978 Leeboy 800T Gas Paver	\$7,900
1972 Gallon 503L Diesel Grader	\$13,500
1970 Gallon T500 Grader w/Cab	\$8,900
Tennant 92 Sweeper, Gas	\$3,900
Advance Retriever 6680G Sweeper	\$8,900
Grace Tow Behind Sweeper	\$3,500
2) WABCO 35T Rock Trucks	Ea. \$12,500
Euclid 10T Rock Truck	\$4,500
1990 Ingersoll 160 JD Diesel Compressor	\$6,500
Schramm 180 Air Compressor	\$3,000
1982 Davey 190 Air Compressor	\$2,900
Stacking Rake 8' Fr CAT IT	\$2,500
Root Rake 8' Fr JD 6 Way	\$2,500
Epoky Rear of Trk. Cinder Spreader	\$2,000
(50) Sets of Forlift Forks	Come Look
Several Used Loader Buckets	Come Look
Several New & Used Hoe Buckets	Come Look

### FORKLIFTS/SCISSORLIFTS

1989 Case 580E 4 WD 21' ROPS	\$29,500
1988 Case 580E 4WD 14' Cab	\$29,500
1985 TCI Dynalift 4WD 32'	\$29,500
1974 MF 40 28' 4000 Lb. Rough Terrain	\$8,900
CAT V50B 5,000 Lb. Pneumatic LPG	\$3,900
White Hard Tire LPG Towmotor (As Is)	\$2,000
1988 Hunter 1635 16' 750 Lb. Scissorlift	\$4,900
1985 Marklin M25 Scissorlift	\$8,900
Truckmen 4,000 Lb. Solid	\$860