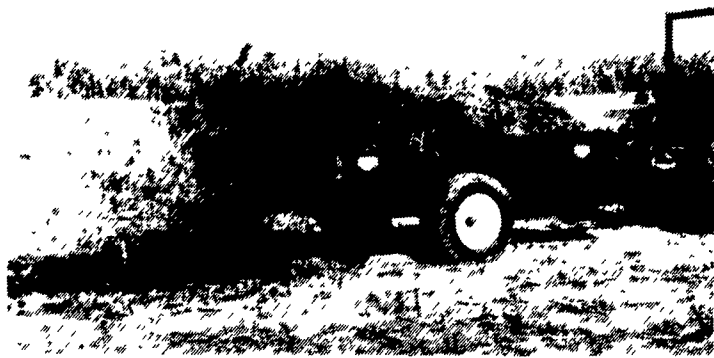


1 FARM EQUIPMENT

At Last... A Line Of Manure Spreaders Designed For The Low-Input Farmer.

Affordable and well-built, but no extra frills design. Made for the way you work.



- 7 Sizes available from 25 to 128 bu.
- Ground Drive or PTO.
- High-Density polyethylene floor comes with 20 year warranty.
- Prices start under \$1,000 (plus freight)

If you're in need of a manure spreader but can't justify spending \$4,000 for one, then call us now for a free brochure and price list.



2617 Stumpton Rd., Dept. LF
Bird-In-Hand, PA 17505
(717) 656-3050

Dealer Inquiries Invited

AGI-POMPE®

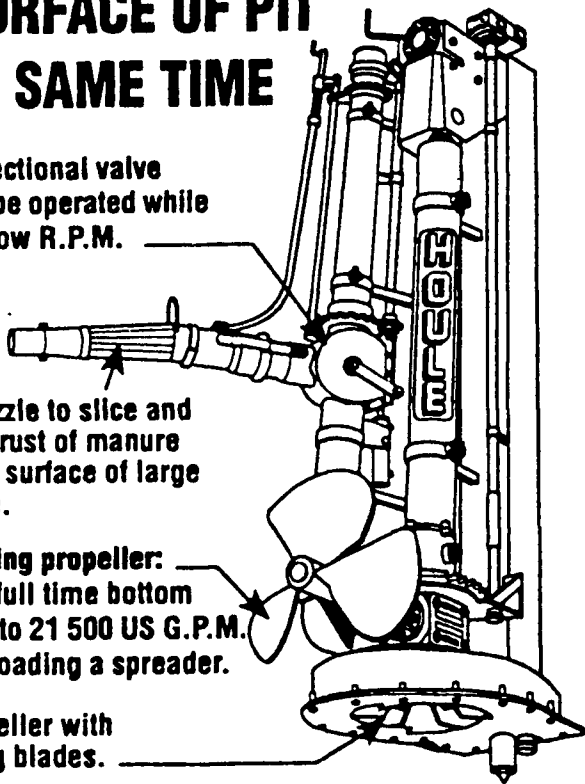
AGITATES BOTTOM SEDIMENTS AND SURFACE OF PIT AT THE SAME TIME

Rotative directional valve designed to be operated while P.T.O. is at low R.P.M.

Powerful nozzle to slice and agitate the crust of manure covering the surface of large holding area.

24" dia. mixing propeller: Providing a full time bottom agitation up to 21 500 US G.P.M. even while loading a spreader.

20" dia. impeller with self-cleaning blades.



Bottom gear box with oil bath protected by a greaseable 3 seals mechanism on each shaft.

Available in 5 versions for concrete pits.



Used Houle 8 Ft. Super Pump \$1,200⁰⁰

Cedar Crest Equipment

Two Convenient Locations



608 Evergreen Rd.
Lebanon, PA 17042
(717) 270-6600
1-800-646-6601

RD 2 Box 271
East Earl, PA 17519
(717) 354-0584

WE CUSTOM DESIGN SYSTEMS FOR YOU

NEW! 4-WHEELED J-93 UTILITY HAULER

Now you can haul supplies, feed and other items — up to 700 pounds — steadily over rough terrain. The new 4-wheeled J-93 Hauler utility vehicle is designed to give you reliable and versatile performance to give you reliable and versatile performance for rugged off-road usage. It's powered by a heavy-duty 16-hp overhead valve twin engine coupled to an efficient 3-speed transmission. An automatic torque converter allow infinite speed ranges in all three gears. Other added features include a larger, wider 1/3 yard capacity dump box, dual rear hydraulic drum brakes, sure-handling 25" x 12" knob-tread tires, plus many more features standard.



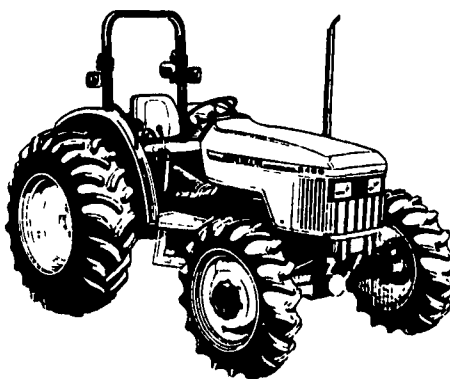
J-93 Hauler easily handles loads up to 700 pounds.

Cooley's Welding
(800)-549-4623
Maryland Farmland UV's
Arvin Martin (301) 733-7724
FREE DELIVERY



5400 UTILITY TRACTOR

With Mechanical Front Wheel Drive



- ♦ Turbocharged 60 PTO hp, 3 cylinder wet sleeve liquid cooled John Deere diesel engine
- ♦ Independent 540 rpm PTO
- ♦ Tandem gear hydraulic pumps with a total capacity of 18.8 gpm and 2750 psi for excellent performance
- ♦ Front-operated differential lock for increased traction on command
- ♦ Self adjusting, self equalizing hydraulic wet disc brakes
- ♦ Hydrostatic power steering
- ♦ Collar Shift transmission, 9 forward, 3 reverse speeds
- ♦ Optional mechanical front wheel drive
- ♦ Optional creeper and TSS transmissions available
- ♦ Optional direction reverse
- ♦ Category 2.3 point hitch with telescoping links

In Stock - SALE PRICE **\$24,589**



New & Used Farm, Lawn & Garden Equipment

KERMIT K. KISTLER, INC.

Rt. 143 LYNNPORT, PA 18066
610-298-2011

Sales & Service

Hours: 8-5 Sat. 8-12

Pick-up & Delivery



KUBOTA KUBOTA KUBOTA KUBOTA KUBOTA KUBOTA KUBOTA KUBOTA

ERB & HENRY EQUIP., INC.

PARTS - SERVICE - SALES - RENTALS

SINCE 1898

- Kubota
- Cub Cadet
- Befco Equip.
- Brouwer Turf
- Case IH Parts & Service (For Parts)
- Woods
- John Bean
- Meyers Snow Plows
- Howard Price
- Grasshopper

FARM EQUIPMENT IN STOCK

- DEMO UNITS:
CASE IH 415 Packer Mulcher, 10 1/2"
CASE IH 183 6 Row Cultivator
Meyers 518 Forage Box (New)
NEW KUBOTA TRACTORS IN STOCK - 16 HP to 90 HP

USED EQUIPMENT

- TRACTORS:**
- Kubota 1750 4x4 Hydro, w/Loader, Low Hrs.
 - Ford 4500 Diesel w/Loader & Backhoe
 - JD 855 2WD Rear Deck
 - JD 440 Loader Tractor w/Hyd. Side Mount Sickle Bar
 - Case 1845C Skid Loader 1403 Hrs.
 - Case 1845C Skid Loader 1350 Hrs.
 - Gehl 4500 Skid Loader
 - IH 140-FH w/Woods 5' Mower & 5' Snow Plow
 - IH 154 Cub Low Boy
 - IH 154 Cub Low Boy w/5 Ft. Sickle Bar
 - IH 154 Cub Low Boy w/L59 Woods Mower
 - IH 404 Gas, Dual Turf Tires, W/O 3 Pt. Hitch
 - IH 574 Gas w/2250 Loader (Needs Paint)
 - IH 684, Ag Tires, Engine Overhauled
 - MF 2135 Gas, Turf Special, Nice Clean Tractor
 - Farmall H Nice Shape
 - Farmall Cub w/Front Sweeper Broom & Belly Mower (yellow & white)
 - 184 Cub LowBoy w/Cab & 5 Ft. Mower
 - Farmall F20 (Restored)
 - Farmall A w/1-Bottom Plow, Nice Shape, Needs Paint
 - Case 400 Gas (Restored) Nice
 - Farmall BN w/Bucksaw (Restored)
 - 2 Post ROPS w/canopy for 686/666 \$900

- COMBINES:**
- IH 744 Wide Cornhead for 715, (For Parts)
 - IH 810 15' Grain Head w/Hart Carter Floating Cutter Bar
 - MF 44 4RW, CH, Nice Shape
- OUTDOOR POWER EQUIP.:**
- Good Selection Of Older Cub Cadet Lawn & Garden Tractors - All Makes and Models!
 - JD LX176, 38" Deck, Like New
 - JD 912 Front Runner, Gas, Liquid Cooled w/60" Deck & Peco Vac (Like New)
 - JD 935 Front Runner w/72" Deck
 - Cub Cadet 1711 44" Deck
 - Cub Cadet 1810 50" Deck
 - Cub Cadet 1450, 1650 & 169 With Decks!
 - National 5 Gang Real Mower w/11 HP Engine, Pull Type
 - Toro 7 Gang Pull-Type Golf Course Mower (for parts)
 - Gravely 812 12HP Tractor w/50" Deck (Real Nice)
 - (2) National 3 Gang Triplex, 84" Cut, 1-Electric Start, 1 - Manual Start
 - Dixon ZTR w/30" Cut & Bagger, Nice
 - Howard-Price 727 Diesel w/5 Gang Real Mowers
 - Steel Cab for IH 154, 185 or 184 Nice Shape

Howard Price
DEMO UNITS REDUCED
#727 Mower, 25 HP Diesel w/6 Ft Deck \$9,695
#1260 10 Ft 6 In Wing Mower \$18,960
17 HP w/62" Floating Deck, Hydro Drive \$3,150
14 HP w/48" Floating Deck, Hydro Drive \$2,779

MISCELLANEOUS:

- NI Ground Drive Spreader (Needs Wood)
 - Brouwer Sod Harvester 3000 Ford Tractor w/16" Folding Unit
 - JD 7000 4-Row Liquid Planter, Plate Type
 - Woods 72, 3 Pt. Mower
 - MF 5 Ft. 3 Pt. Mower
 - Century 500 Gal. Sprayer, 36 ft. Boom, Centrifugal Pump
 - FMC 500 Gal. Trailing Sprayer w/Boom Piston Pump
 - Vermeer 3300 Tree Spade for 1845C Skid Loader
 - 4-Ton Tandem Axle Hydraulic Dump Trailer
 - Huber Highway Roller, 8-Ton
 - Used Meyers Snow plows
- HAY & FORAGE:**
- IH 445 Baler w/Thrower (like new)
 - IH 830 Chopper w/Pick up & 3RN cornhead
 - IH 440 Baler w/Thrower
 - IH 990, 9 Ft. Mower Conditioner, Field Ready
 - Hesston 4500 Wire Baler w/Thrower
 - NH 411 Discbine
 - NH 479 Haybine Good Rolls
- TILLAGE:**
- Hugo 10 ft. Harrow Roller
 - Hyd. Transport.....\$1,500
 - IH 37 Disc Harrow 14 ft., 7 1/2" Spacing

• Used Cub Cadet Parts In Stock •

ERB & HENRY EQUIP., INC.

One Mile North of Boyertown, New Berlinville, PA
Hours: Daily 7:30 to 5; Sat. 7:30 to 3

610-367-2169 Fax 610-367-6715

WE SHIP UPS DAILY

KUBOTA KUBOTA KUBOTA KUBOTA KUBOTA KUBOTA KUBOTA KUBOTA