

Estimated Daily Livestock Slaughter

Under Federal Inspection

April 17, 1996

| | CATTLE | CALVES | HOGS | SHEEP |
|---------------------|---------|--------|-----------|--------|
| TUESDAY (EST) | 132,000 | 7,000 | 360,000 | 15,000 |
| WEEK AGO (EST) | 130,000 | 7,000 | 356,000 | 16,000 |
| YEAR AGO (EST) | 126,000 | 5,000 | 359,000 | 18,000 |
| WEEK TO DATE (EST) | 387,000 | 20,000 | 1,080,000 | 46,000 |
| SAME PD LT WK (EST) | 375,000 | 18,000 | 937,000 | 47,000 |
| SAME PD LT YR (EST) | 371,000 | 15,000 | 916,000 | 54,000 |

PREVIOUS DAY ESTIMATED TUESDAY, STEER AND HEIFER 100,000, COW AND BULL 27,000.

SOURCE: USDA MARKET NEWS, WASHINGTON, D.C.

Aberdeen Sales Company, Inc.

Complete Auction & Appraisal Service
Churchville, Md.

Report Supplied by Auction
Wednesday, April 17, 1996

SLAUGHTER STEERS: MARKET 4.00 LOWER. CHOICE 2-4 1100-1400 LBS. 55.00-58.00; SELECT & LOW CHOICE 1000-1500 LBS. 51.00-54.00; HOL. STEERS HI CHOICE & PRIME 1250-1400 LBS. 49.00-51.00; CHOICE 1200-1500 LBS. 46.00-49.00; SELECT, ALL WEIGHTS 41.00-44.00.

SLAUGHTER HEIFERS: MARKET 4.00 LOWER. CHOICE & PRIME 950-1300 LBS. 54.00-57.00; SELECT ALL WEIGHTS 900-1400 LBS. 50.00-54.00.

COWS: MARKET 3.00 LOWER. BRK. UT. & COMM. 2-4 BULK 32.00-35.00; HI DRESSING 35.00-38.00; CUTTER & BON. UT. 29.00-31.00; HI DRESSING 31.00-34.00; CANNER & CUTTERS 26.00-30.00; LOW DRESSING 24.00 AND DOWN.

BULLS: MARKET 3.00 LOWER. ALL WEIGHTS 1100-1900 LBS. 37.00-43.00. VEAL CALVES: MARKET 4.00 HIGHER. CHOICE AND PRIME 200-400 LBS. 72.00-89.00; HI GOOD AND LOW CHOICE ALL WEIGHTS 51.00-59.00.

FARM CALVES: MARKET 20.00 HIGHER. HOL. BULLS 100-125 LBS. 85.00-120.00; HOL. BULLS 85-95 LBS. 76.00-115.00; HOL. HEIFER CALVES 100-120 LBS. 127.00-163.00; SMALL FRAME 70-105 LBS. 60.00-92.00; SLAUGHTER CALVES ALL WEIGHTS 30.00-45.00.

FEEDER CATTLE: MARKET 6.00

LOWER. BULLS & STEERS 400-900 LBS. 33.00-56.00; HEIFERS 300-700 LBS. 29.00-42.00.

LAMBS: MARKET 3.00 HIGHER. CHOICE & PRIME 90-110 LBS. 90.00-112.00; LIGHTER LAMBS 86.00-165.00; EWES - HEAVY 25.00-31.00, LIGHT 30.00-43.00.

GOATS: MARKET STEADY. SMALL 25.00-40.00; MEDIUM 40.00-60.00; LARGE 75.00-110.00.

HOGS: MARKET 1.00 LOWER. 210-250 LBS. 44.00-47.00; 255-300 LBS. 37.00-46.00; SOWS - HEAVY 29.00-34.00; SOWS - LIGHT 23.00-27.00; BOARS ALL WEIGHTS 26.00-30.00.

Frederick Livestock Auction

Frederick, Md.

April 15, 1996

Report Supplied by Auction

SLAUGHTER COWS: 90 HEAD, 50-1.00 LOWER. UTILITY 31.00-35.00; HIGH DRESSING 36.00-38.25; CANNERS 27.00-31.00; SHELLY 27.00 DOWN.

BULLS: YG#2 1100-1300 LBS. 35.50-37.50; 1 2040 LBS. AT 36.75.

FED STEERS: NO SELECT OR CHOICE; STANDARD 1375 LBS. AT 36.75.

FED HEIFERS: LOW SELECT 1100 LBS. 43.00; STANDARD DAIRY X 1050 LBS. 37.75.

VEAL CALVES: 146 HEAD. CHOICE 1320 LB. AT 66.00; CULLS 85-110 LBS. 35.00-43.00; 50-80 LBS. 30.00-40.00.

FARM CALVES: HOLSTEIN BULLS 10.00-15.00 HIGHER. #1 90-120 LBS.

80.00-106.00; #2 80-100 LBS. 45.00-75.00; HOLSTEIN HEIFERS #1 90-125 LBS. TO 130.00; BEEF X BULLS 45.00-72.00.

BUTCHER HOGS: 46 HEAD, .50 HIGHER. US#1&2 230-250 LBS. 49.00-49.60; 225-260 LBS. #1&3 47.00-48.50; 3 HEAD 190 LBS. AT 38.00. STOCK CATTLE: STEERS, NONE. HEIFERS: 300-600 LBS. 32.00-37.00. BULLS: 500-700 LBS. 30.00-38.00; 700-850 LBS. 34.00-35.00. SHEEP: 20.00-29.00. GOATS: MEDIUM TO 44.00; SMALL TO 21.00; KIDS TO 17.00.

PIGS AND SHOATS: NONE. SOWS: NONE. BOARS: NONE. HATFIELD QUALITY MEATS 49.50 PLUS BONUS ON QUALITY HOGS. BUYING STATION HELD EVERY TUES. AT FOUR STATES.

Friend's Stockyard Inc.

Accident, Md. 21520

Report Supplied by Auction
April 15, 1996

STOCK BULLS AND STEERS (200-500 LBS.) 40.00-55.00.

STOCK HEIFERS: 30.00-45.00.

SLAUGHTER STEERS: GOOD TO CHOICE 55.00-58.00, MEDIUM TO GOOD 52.50-54.50, HEAVY CHOICE OVER 1450 LB. 55.00-59.00.

HOLSTEIN STEERS: HEAVY 42.00-47.50, LIGHT 34.00-40.00.

SLAUGHTER HEIFERS: GOOD TO CHOICE 55.00-58.00, MEDIUM TO GOOD 50.00-55.00.

BULLS: HEAVY 35.00-43.50, LIGHT 30.00-36.50.

COWS: FEW HIGH DRESSING UP TO 38.00, UTILITY (HOLSTEIN) 30.00-34.75, COMMERCIAL TO GOOD 26.00-30.00, CULL COWS 25.00 AND DOWN.

VEALS: GOOD TO CHOICE 40.00-63.00, MEDIUM TO GOOD 30.00-44.00.

BOB CALVES: 30.00 AND DOWN. HOLSTEIN BULL CALVES — RETURN TO FARM (90 TO 120 LB.) - 70.00-97.00.

HOLSTEIN HEIFER CALVES — RETURN TO FARM (100 TO 120 LB.) - UP TO 141.00.

BEEF CROSS CALVES — RETURN TO FARM UP TO 60.00.

Lancaster Farming, Saturday, April 20, 1996-A15

HOGS: TOP QUALITY 47.50-49.50, HEAVY 40.00-46.00, LIGHT 30.00-38.50.

SOWS: 24.00-34.50. MALE HOGS: 24.00-27.00. LAMBS, LIGHT, UP TO 120.00, FEEDER LAMBS, NONE AVAILABLE. SHEEP: 21.00-41.00. LIVESTOCK PRICES ARE ALL GIVEN PER HUNDRED WEIGHT! ANNUAL SPRING GRASS CATTLE SALES SAT., APRIL 20 AND MAY 4.

North Jersey Livestock

Hackettstown, NJ

Report Supplied by Auction
Tuesday, April 16, 1996

CALVES .13-.98.
COWS .17%-.36%.
EASY COWS .10-.27%.
FEEDERS 300-600 LBS. .19-.89.
HEIFERS .10-.49.
BULLS .17-.55.
STEERS .27%-.53%.
HOGS, NONE.
ROASTING PIGS EACH, NONE.
BOARS 20-31.
SOWS .31-.33%.
SHEEP .06-.75.
LAMBS EACH 15.00-75.00.
LAMBS PER LB. .45-1.60.
GOATS EACH 30.00-117.50.
KIDS EACH 6.00-76.00.
HIDES EACH, 1 AT 5.00.
TOTAL: 734.

New Holland Horses

New Holland Sales Stables
New Holland, PA

Monday, April 15, 1996

Report Supplied By Auction
232 HEAD. MARKET STRONGER. WORK HORSES 925.00-1065.00. DRIVING HORSES 550.00-1200.00. RIDING HORSES 465.00-900.00. BETTER RIDING HORSES 1100.00-1700.00. REGISTERED RIDING 1250.00-1375.00. KILLERS, 6 HEAD 900.00-1000.00. HEAVYWEIGHTS 735.00-860.00. LIGHTWEIGHTS 430.00-650.00. PONIES 140.00-350.00. LARGE PONIES 410.00-575.00, 2 AT 625.00 AND 650.00. COLTS 210.00-510.00.

Special Sale Work and Driving Horses

New Holland Sales Stables

New Holland, PA

Friday, April 12, 1996

Report Supplied by Auction

262 HEAD. WORK HORSES: MICHIGAN, SINGLES 950.00-1525.00; VIRGINIA, PAIRS 2600.00-3200.00, SINGLES 900.00-1750.00; TENNESSEE, SINGLES 975.00-1600.00; VIRGINIA, PAIRS 2400.00-3000.00, SINGLES 1200.00-1350.00; KENTUCKY, SINGLES 1150.00-1925.00. DRIVING HORSES: OHIO 875.00-3100.00; NEW JERSEY 950.00-1550.00; NEW YORK 750.00-1525.00; OHIO 1025.00-2100.00; PENNSYLVANIA 875.00-1650.00. LOCAL DRIVING: 575.00-2000.00; LOCAL WORK, PAIRS 1850.00-3000.00, SINGLES 900.00-1250.00. MULES: PAIRS 1700.00-3500.00, SINGLES 675.00-1450.00; FEW PONIES 325.00-660.00.

New Holland Sales Stables Goat and Sheep Sale

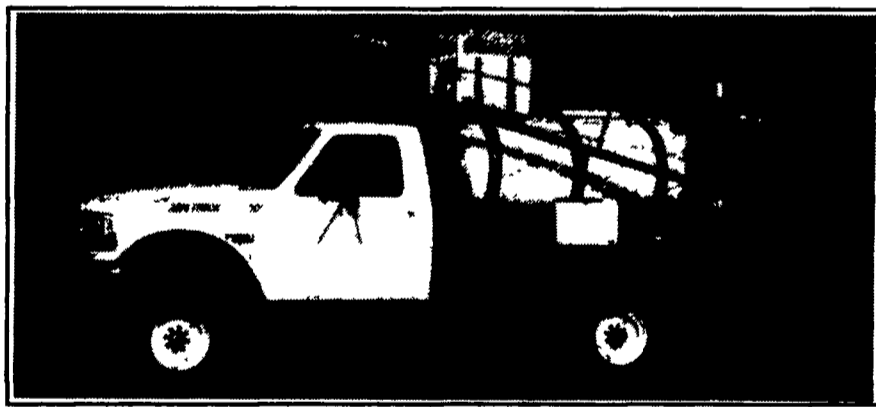
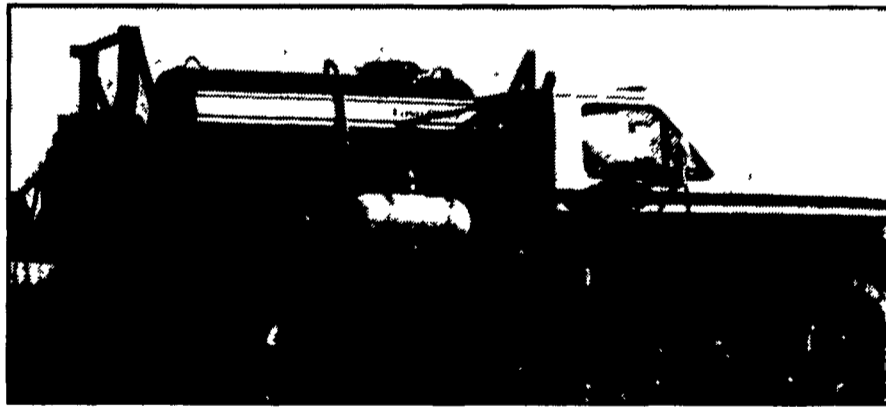
Monday, April 15, 1996

GOATS: 621 HEAD. BILLIES 75-100 LBS. 100.00-150.00; MUTTON 70-80 LBS. 80.00-95.00; NANNIES 45-55 LBS. 55.00-70.00; YEARLINGS 45-60 LBS. 60.00-70.00; KIDS 20-30 LBS. 30.00-40.00. SHEEP: 1081 HEAD. ALL WEIGHTS, 25.00-50.00; 1 YEAR-OLDS 45.00-75.00; 2 YEAR-OLDS 40.00-60.00; WOOL LAMBS 70-90 LBS. 85.00-100.00 AND 90-120 LBS. 80.00-95.00. NEW CROP LAMBS, 25-50 LBS. 120.00-170.00; 50-80 LBS. 115.00-125.00; 80-100 LBS. 105.00-115.00.



The Lor★AL FS500™
is the First Compact Sprayer
Truly Built for the Custom Applicator

The Agri-Truck 500™ from Ag-Chem is a
year-round, multi-purpose vehicle.
Use it for spraying, hauling, and towing.



- F-350 Ford 4WD-XLT package
- 7.3 diesel IHC engine - 210 HP
- 5-speed manual transmission
- 45' or 55' center pivot fully hydraulic no-bounce Benson boom
- PTO mounted direct drive hydraulic system
- 500-gallon stainless steel tank

- F-350 Ford 4WD-XLT package
- 7.3 diesel IHC engine - 210 HP
- Manual or automatic transmission
- Heavy duty flatbed
- Recessed fifth wheel
- 500-gallon poly elliptical tank
- 45' or 60' hydraulic boom
- Quick mount spray system

And Many Other Standard & Optional Features Available For Both Units.

Serving the Farming Industry for over 30 Years
1188 Enterprise Rd., East Petersburg, PA 17520

CALL TOLL FREE: 1-800-760-8800



FOR MORE INFORMATION & A NEW 1996 PARTS CATALOG