

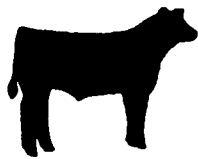
Westminster Livestock Auction

Hagerstown, Md.
April 9, 1996

Report supplied by auction
SLAUGHTER COWS: 86 HEAD, STEADY PRICES. UTILITY 32.00-36.00; HIGH DRESSING 36.25-37.50, 2 AT 40.00 AND 42.00; CANNERS 29.00-32.00; SHELLY 28.50 AND DOWN.
BULLS: FEW OFFERED. YG#1 LIMOUSIN 1750 LBS. 51.75; 1 DRY FBD 1060 LBS. AT 42.00.

FED STEERS: HIGH CHOICE 1200-1400 LBS. 60.00-61.75; CHOICE 56.00-59.00; CHOICE HOLSTEINS 1200-1500 LBS. 54.00-56.00, 1 AT 59.00.
FED HEIFERS: CHOICE 1050-1200 LBS. 55.00-57.25; CHOICE #3 850-1000 LBS. TO 53.50.
VEAL CALVES: 71 HEAD. CHOICE 170 LBS. TO 57.50; GOOD 105-135 LBS. 39.00-50.00; CULLS 85-110 LBS. 32.00-38.00; 50-80 LBS. 25.00-34.00.
FARM CALVES: HOLSTEIN BULLS 10.00-15.00 HIGHER. #1 90-120 LBS. 75.00-100.00; #2 85-100 LBS.

40.00-65.00; HOLSTEIN HEIFERS FEW 75-80 LBS. TO 105.00; BEEF X BULLS TO 59.00.
BUTCHER HOGS: 35 HEAD. 50 HIGHER. US#1&2 235-260 LBS. 49.75-50.00; 215-260 LBS. #1&3 48.00-49.00; 5 HEAD 277 LBS. AT 48.50; #2&3 265-290 LBS. 45.00-46.00.
STOCK CATTLE: 177 HEAD, STEADY TO LOWER PRICES. STEERS MEDIUM AND LARGE FRAME 300-500 LBS. 48.00-56.00, FEW 60.00-62.00; 500-600 LBS. 50.00-57.00; 600-800 LBS. 45.00-51.00; 800-1000 LBS. 43.00-48.00.
HEIFERS: MEDIUM TO LARGE FRAME 300-500 LBS. 36.00-42.00; 500-700 LBS. 34.00-43.00; 700-800 LBS. 36.00-42.00.
BULLS: 300-500 LBS. 43.00-48.00, 1 AT 55.00; 500-700 LBS. 32.00-39.00; 2 LIMOUSINS 800-900 LBS. 42.00 AND 47.00.
LAMBS: 35 HEAD. CHOICE 100-120



If You're Looking for Feeder Cattle

Call Willier, Inc. (717)626-3113

All Cattle IBR-BVD Inoculated. Shipping Fever & Selemium Treated Prior to Delivery to Your Farm.

PARADISE TRUCKING

Trucking available for type 41 Tobacco. Also general hauling. Small and large closed vans available.

CALL MITCH AT 717-687-0990



100 Feeder Cattle

Local Holstein & Angus 900-1100 Lbs. To be Sold

Tues., April 16, 1996 1 P.M.

at Vintage Sales Stables, 3451 E. Lincoln Hwy., Paradise, PA.
L. Robert Frame Sr. (717) 442-4181 Office (610) 458-8518 Home

LBS. 87.00-98.00; FEW 80-100 LBS. 95.00-98.00; 70-80 LBS. 116.00-137.00; 40-65 LBS. 170.00-190.00; 30-60 LBS. 130.00-155.00.
SHEEP: 32.00-41.00; HEAVY WEIGHTS 22.00-32.00.
GOATS: LARGE FEW TO 75.00; MEDIUM 35.00-50.00; SMALL 15.00-36.00.
PIGS AND SHOATS: BY THE HEAD, FEW 30 LBS. TO 24.00; 50 LBS. TO 31.00.
SOWS: 15 HEAD. 300-450 LBS. 31.00-32.25; 500-700 LBS. 35.00-36.75.
BOARS: 400 LBS. TO 27.00.
NEXT TUES., APRIL 16: GRADED FEEDER PIG SALE, 7 P.M. ALSO SELLING 1 MINIATURE DONKEY JACK, 34", GENTLE, GOOD BREEDER.

FEEDER PIGS: 37 HEAD. US#1&3 20-50 LBS. 14.00-24.00.
SHEEP: 28 HEAD. CHOICE LAMBS, NO MARKET TEST; GOOD LAMBS 85.00-90.00; SLAUGHTER EWES 22.00-35.00.
GOATS: 27.00-65.00.
30 LOADS OF HAY. ALFALFA 89.00-107.00; MIXED HAY 62.00-85.00; 2 LOADS OF BAR CORN 109.00-111.00; 3 LOADS OF STRAW 33.00-62.00.

Morrison Cove Livestock

Martinsburg, Pa.
April 8, 1996

Report supplied by auction
CATTLE 232. STEERS CHOICE 59.50-62.00; GOOD 58.50-60.00.
HEIFERS: CHOICE 56.00-60.00; GOOD 52.50-55.50.
COWS: UTILITY & COMMERCIAL 33.50-39.75; CANNER & LOW CUTTER 25.50-32.50.
BULLOCKS: 42.50-51.00.
BULLS: YIELD GRADE NO. 1 36.00-47.00.
FEEDER CATTLE: STEERS 38.00-50.00; BULLS 32.00-42.00; HEIFERS 31.00-40.00.
CALVES 126. PRIME, NO MKT. TEST; CHOICE 72.00-79.00; GOOD 55.00-65.00; STANDARD 25.00-35.00; HOLSTEIN BULLS 90-130 LBS. 50.00-80.00; HOLSTEIN HEIFERS 90-130 LBS. 60.00-115.00.
HOGS: 394. US NO. 1-2 49.00-50.00; US NO. 1-3 47.50-48.50.
SOWS: US NO. 1-3 32.00-37.50.
BOARS: 26.50-31.00.

Shenandoah Valley Livestock

Harrisonburg, Va.
April 6, 1996

Report supplied by auction
STEERS 300-499 LBS. 40.00-63.50, 500-699 LBS. 35.00-60.00, 700-1000 LBS. 30.00-53.00.
HEIFERS 300-499 LBS. 30.00-45.00, 500-699 LBS. 28.00-42.00, 700-1000 LBS. 25.00-44.00; BULLS 300-499 LBS. 30.00-50.00, 500-699 LBS. 31.00-45.00, 700-1000 LBS. 28.00-40.00.
HOLSTEIN STEERS: 3-499 30.00-41.00; 7-1100 35.00.
STOCK COWS: BEEF 175.00-375.00; BABY CALVES 5.00-55.00; SLAUGHTER COWS 34.75; SLAUGHTER BULLS 37.50.
CHOICE AND PRIME YG#1-3 BLUE O 93.00; GOOD AND FEW CHOICE YG#1&2 RED O 93.00.
FEEDER LAMBS MEDIUM AND LARGE 1&2 70-84 LBS. RED SH 77.00.
SLAUGHTER EWES: 20.00-25.00.
SOWS: 31.00.
BOARS: 15.00.
VEALS 50.00.
SLAUGHTER CALVES 48.00.

TELMARK INC.
Your Lease Financing Source for over 30 years.

Telmark leasing offers:

- 100% tax deductibility
- Flexible payment schedules
- Fixed competitive payments
- Year-end tax planning

Fred Dixon (412) 346-3455
Frank Hunter (716) 595-3954
Mike Fullam (717) 966-9202
Ken Darlington (717) 733-3532
Lisa Sonnen (717) 866-9217
Patrick Rush (412) 587-3989
Paul Shipper (302) 456-1931
Mike Dixon (814) 684-5707
Jody Underwood (301) 898-0095
Andrew McLean (410) 827-5052

Lease new or used equipment from both public and private sale.

TELMARK INC.
800-451-3322



In the Northeast, KY, MI, VA, OH, WV, IN, WI, IL, NC, TN, MO, MN and IA Minimum lease: \$5,000

PREMIUM ALUMINUM ROOF COATING

\$29.99 5 Gal.



WERNER

LADDERS
UP TO **50% OFF**
ALUMINUM
FIBERGLASS
WOOD
OVER 500 IN STOCK!



Ephrata East End Mart, Inc.
Mon.-Tues.-Thurs.-Fri. 8 a.m. - 9 p.m.
Wed. & Sat. 8 a.m. - 5 p.m.
Paint - Wallpaper - Hardware - Auto Supplies
711 E. Main St.
733-8040 • 733-4388

AGWAY BUILDINGS



FARM
Livestock • Storage • Utility
HORSE
Barns • Riding Arenas • Open-Sided Shelters
COMMERCIAL
Office • Warehouse • Retail
Over 40 years of experience and expertise. Quality designs competitively priced.

For more information call **1-800-258-2096**

AGWAY BUILDINGS
PO Box 4853
Syracuse NY 13221

