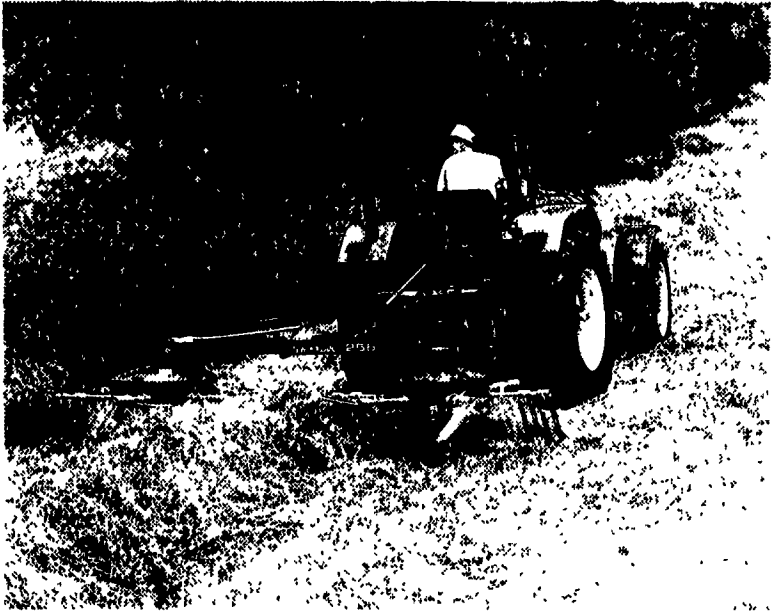


YOUR BEST HAY



NEW HOLLAND



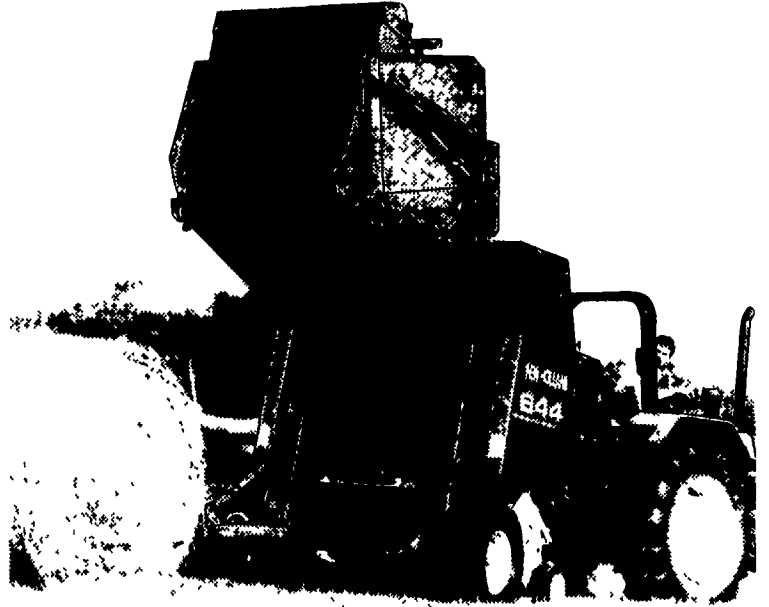
A TEDDER AND A RAKE

The Model 255 rake tedder is a flexible machine—it's the tedder that also rakes. The "255" can:

- Rake a swath into a windrow.
- Rake two windrows into one.
- Turn windrows for faster drying.
- Move crop away from fences or borders.
- Ted a 10-1/2-foot area to fluff up wet, matted-down crop for quick drying.

And, you can change the "255" from one function to another **without tools!** Stop by for a demonstration.

ALL-NEW ROUND BALER



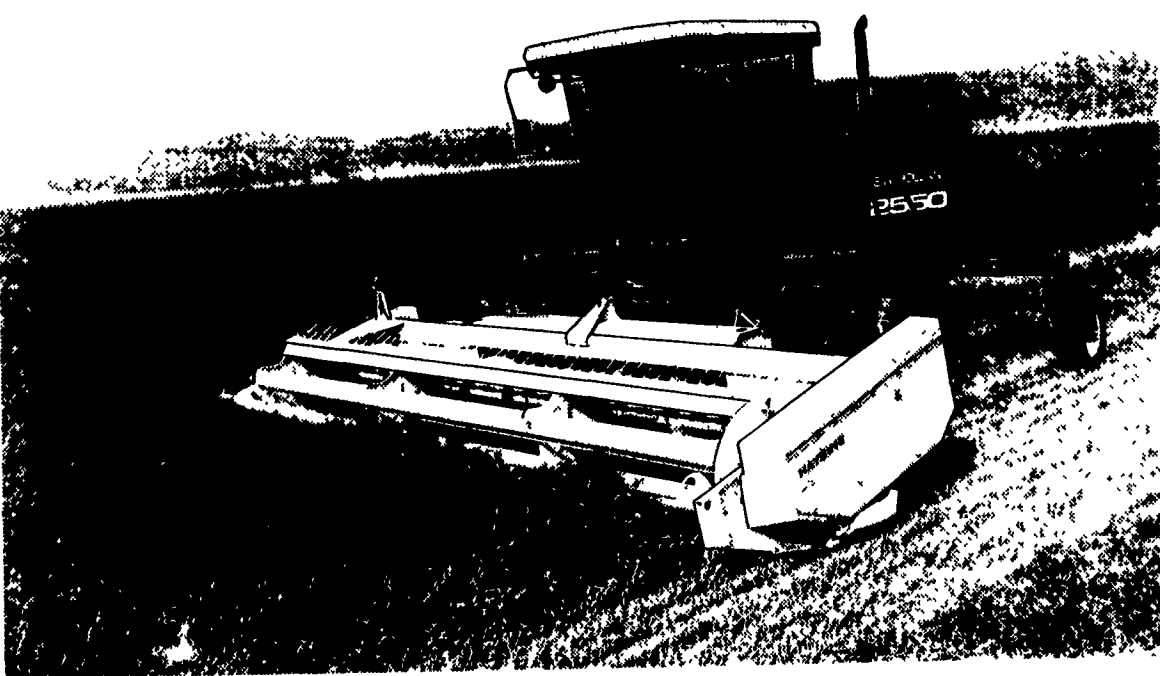
LIFE'S TOO SHORT FOR IMPERFECT BALES

You work hard every day and always give your best. So shouldn't you expect the same from your round baler? Introducing the Model 644 Roll-Belt™ round baler from New Holland. It makes perfect bales every time.

- Roll-Belt™ design makes dense, uniform 4'x5' bales weighing up to 1,000 lbs.
- Available Bale Command Plus™ monitoring system takes the guess work out of making great bales
- Stronger backbone on Super Sweep pickup to handle tough crops without clogging
- Available wide pickup for large windrows

Stop in today and check out the new Model 644. After all, don't you think you deserve the best?

**SEE YOUR NEAREST
NEW HOLLAND DEALER**



SPEEDROWER® DEPENDABILITY

The Model 2450 and 2550 have rugged Speedrower® construction and a lot of convenience and performance features that make you extra productive:

- 87- or 100-hp Genesis™ diesel engines
- Smooth hydrostatic transmissions
- Floating 20-inch diameter auger
- 102-inch chevron-design rolls
- Unmatched view of the header
- A quiet, comfortable cab
- Easy access to all service points

See the Speedrower windrowers. Stop by and get all the details.



NEW HOLLAND