

Pennsylvania Cattle Association

(Continued from Page A1)

Monogahela. A Penn State student, Beinlich earned a spot on the National Beef Quiz Bowl team. He was a finalist in junior showmanship at the national show.

The PCA membership elected five new directors, each to a three-year term: John Hausner of York County, Dennis Heisey of Lancaster County, David Seamans of

Centre County, Oliver Weiss of Allegheny County, and James Work of Fayette County.

Outgoing PCA president Bob Hay in his farewell address urged members to consider PCA's role in the future of the Meat Evaluation Center; to support as an organization Extension and research, possibly starting a Pennsylvania Endowment Fund for research;

and to cooperate with other agricultural organizations such as the new National Beef Association.

Later, the Board elected Oliver Weiss as president, William McCoy as vice president, Paul Slayton as treasurer, and Lowell Wilson as secretary. Joan Potter serves as managing secretary for the PCA.

Performance-Tested Bull Sale Results Given

The Pennsylvania Department of Agriculture's Meat Animal Evaluation Center has announced the results of its 23rd annual performance-tested bull sale.

Despite icy weather conditions, the seats were filled to capacity for the noon sale, with 103 registered bidders.

The director of the bureau of animal industry, Dr. Max Van Buskirk, brought greetings from the Pennsylvania Department of Agriculture. Dr. Dan Hagen, interim head of the Penn State Department of Dairy and Animal Science, commented on his department's role in performance testing programs and encouraged attendees to help themselves by using performance-tested sires.

Bob Hay, president of the Pennsylvania Cattlemen's Association,

cosponsor of the program, discusses a survey that is being conducted to gather input on Pennsylvania's performance testing programs and encouraged procedures to express their general support for these programs or they may not be continued.

The sale started with the top-indexing and top-gaining Angus bull bred by Marlin and Steve Paul of Klingerstown. This bull, along with two other Angu, recorded the Angus top bid of the day, \$1,700, offered by Charles Homan of Spring Mills. The second high-indexing and second fastest-gaining Angus bull bred by Jack Myers of Dallastown, also brought \$1,700 and was purchased by Glenn Julius of Dover. Watchtower Farms of Wallkill, N.Y. also offered \$1,700 for their Angus selection, a lower birth wt. EPD bull consigned by ErReR Hill Farms of Friedens. The 22 Angus bulls averaged \$1,310.

Eleven Simmentals averaged \$1,161. The top-selling and top-indexing Simmental was consigned by Miller & Shoemaker's Simmentals of Buffalo Mills. The fastest-gaining bull over all breeds, he was sold to Richard Lee George of West Lebanon for \$1,700. The second highest selling Simmental was a black embryo transfer bull consigned by Larry

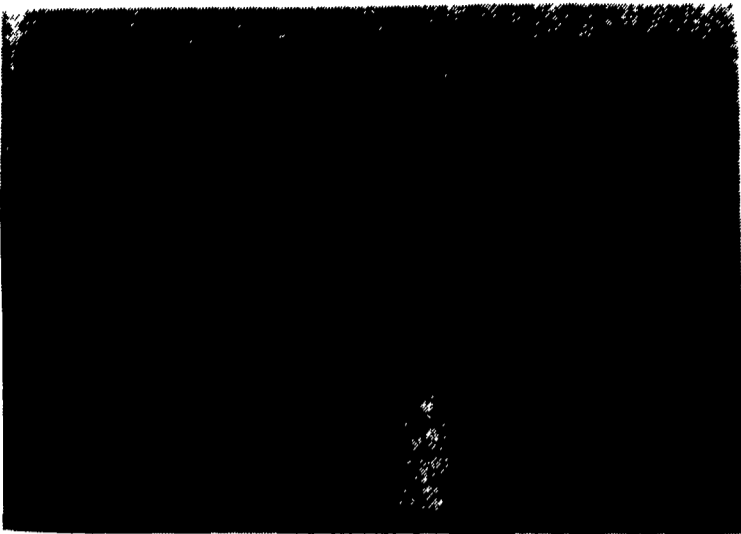
Hughes of New Oxford. This high maternal trait bull was sold to John McDonald of Honesdale for \$1,400.

The top-indexing Polled Hereford consigned by Paul and Bette Slayton, Bradford, brought the top price of the sale, \$3,500, from Karl Frankovitch of McKean. This bull was the fastest-gaining, had the highest-yearling weight and maternal trait of the Polled Herefords. The Slaytons were presented a plaque for the highest-indexing bull over all breeds by the Pennsylvania Cattlemen's Association. The second highest-selling Polled Hereford bull was purchased by Thomas Willrich of Edinboro, for \$2,500. This bull was consigned by Bernie and Debbie Chubbuck of Laceyville. The 17 Polled Herefords averaged \$1,313.


The top-selling and top-indexing Charolais bull was consigned by Dunkard Valley Farm and sold to Richard Eigenbrode of Waynesboro for \$1,200. The top-selling Gelbvieh bull a calving ease bull consigned by Dunwalke Farm of Far Hills, N.J., was purchased by Galen Dreibelbis of State College for \$1,175.

The 53 bulls sold for an average of \$1,268.


For more information contact (814) 238-2527.



PCA awards were presented to, from left, John McFadden, Industry Service Award; Rob Barley, Cattle Feeder of the Year Award; and Richard McElhaney, Seedstock Breeder Award.



Feed Division



"The whole key with our cows is that they will eat the feed. Before feeding with Cargill this was a problem for many years." ROBERT NOLAN

Nutrition management has many faces. Dairy farming is accomplished successfully by many diverse management styles. The Cargill Feed Division meets the demand for flexibility for Pennsylvania.

Robert and Sharon Nolan have been better able to meet their goals with this flexibility. The Nolan's milk three different herd - Jerseys, Ayrshires, and Holsteins. Results in the past year with Cargill speak for themselves:

13 Jerseys 12,772 lbs. RHA, 674 F, 507 P 5/5/95 ~ 17303 lbs. RHA, 765 F, 619 P 1/4/96

28 Ayrshires 13,655 lbs. RHA, 548 F, 463 P 1/3/95 ~ 16815 lbs. RHA, 592 F, 570 P 1/4/96


46 Holsteins 17,555 lbs. RHA, 647 F, 572 JP 1/6/95 ~ 20,364 lbs. RHA, 656 F, 656, P 2/2/96

Regardless of your feeding management requirements, Cargill has solutions to your greatest challenges. Give us a call

1-800-833-3372



Melissa Leiden, left, of Cambria County will help Cattlemen Queen Roxanne Kirst of Lebanon County represent the Pennsylvania Cattlemen's Association.



"A strong, prudent board of directors challenges management and staff to seek the greatest return on our investment in ADC, creating the highest net return to its members back on the farm."

—Richard & Janet Kriebel
Benton, PA

ADC Is the Place To Be

A high net return and a strong board of directors - the outstanding benefits that Richard and Janet Kriebel refer to - are among the strengths of the premier dairy cooperative in the region.

Atlantic Dairy Cooperative has a 78-year history of excellent service to its members. Financially strong, ADC guarantees a market for all member milk and excels in maximizing returns. ADC is a leader in providing equity payments, quality bonuses and over-order premiums to members.

Nearly 4,000 dairy farmers agree that "ADC is the Place to Be." For free information on how you can secure the future of your dairy farm operation, write or call:

Atlantic Dairy Cooperative
1225 Industrial Highway
Southampton, PA 18966
1-800-645-MILK

