

Marel Raub Named Outstanding NESAs Senior

UNIVERSITY PARK (Centre Co.) — Marel A. Raub, a Penn State student from Duncannon, was recently named outstanding senior by the Northeastern Student Affiliate (NESAs) Division of the American Dairy Science Association and American Society of Animal Science.

The northeast affiliate is comprised of member schools in New England, New York, Delaware,

New Jersey, and Pennsylvania. The award was presented at this year's NESAs meetings held at the University of Delaware.

Marel is a senior at Penn State majoring in dairy and animal science. She is enrolled in the University Scholars program, and her honors thesis relates to labor laws in 28 states and their application to agriculture.

She has earned Dean's List recognition for five semesters and was inducted into Gamma Sigma Delta honor society.

Marel's activities in the Penn State Dairy Science Club have been extensive. She served as secretary and corresponding secretary and was named Penn State Dairy Princess for 1994-95.

Marel has displayed a strong commitment to educating dairy youth for the past four years. She was co-chair of the Pennsylvania Junior Holstein Quiz Bowl for 1995 and 1996 and helped coordinate 35 club members in writing questions and moderating, scoring, and timing matches.

In 1996, Marel was co-chair of

the first Pennsylvania Junior All-Breeds Convention.

In 1996, Marel was co-chair of the first Pennsylvania Junior All-Breeds Convention. Over 110 young people and leaders attended this educational event. She also assisted with Foster Family Farm Day and the annual Dairy Jubilee promotion.

Marel is involved with other campus organizations. She is an Ag Advocate and served on the College of Agricultural Sciences Strategic Planning Committee. She also is a member of Coaly Ag Honorary Society and Alpha Zeta.

On the national level, Marel has earned numerous honors and awards. She was a member of the championship team from Penn State at the National Cattlemen's Association quiz bowl, and she was also a member of the winning NESAs quiz bowl team in 1995.

Her oral presentation about nutrient management laws and their impact on Pennsylvania farms earned first place at the 1994 American Dairy Science Association meetings.

Marel plans to attend the Dickinson School of Law beginning in September, with an emphasis in agricultural and environmental law.

Water Withdrawal

(Continued from Page A27)

program.

Brenda Shambaugh, legislative director of the Pennsylvania State Grange, said, "Agriculture needs to begin documenting its water use to establish a data base for our industry needs. We believe that this documentation is necessary to protect our industry in the event of a severe drought or future water rights battles."

You should register your farm's maximum water withdrawal, which for many farmers occurred last summer. Although the official deadline for registering agricultur-

al water withdrawals is March 31, 1997, the best time to register is now, while the effects of the 1995 drought are still fresh in your mind. Operations initiated after March 31, 1997, will need to register before using water.

Call or write the SRBC and get a copy of the easy-to-use registration form. Forms will also be available from many county conservation district offices. For more information, call or write Dave Heicher at the Susquehanna River Basin Commission, 1721 North Front Street, Harrisburg, PA 17102 (717) 238-0423.

Ag Sciences College

(Continued from Page A31)

tion for serving two years on the board.

In addition to the discussions and awards presentations, members of the PCCEA and commissioners were given a quick tour of the new \$55 million Jordan Bryce Sports Center, constructed adjacent to the Beaver Stadium football arena, and also their choice of five tours in the College of Agriculture Sciences — its Land Analysis Laboratory where Geographical Information Systems

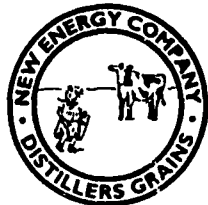
(GIS) mapping using special aerial photography techniques, satellite imaging, and computers; Computer Services network; the Agriculture Arena; the horse barns; and the Agricultural Analytical Services Laboratory where soil testing and fertility can be determined as well as plant analysis and environmental testing of soils and biosolids.

For more information on the PCCEA, contact a local Extension office.

DISTILLERS DRIED GRAINS

Available at

New Energy
South Bend,
Indiana



Cumberland Valley
Shippensburg,
Pennsylvania

FOB or Delivered

Call Marketing for Pricing Information

800-462-8263

NEW ENERGY COMPANY
OF INDIANA

PRESSURE WASHER PARTS & SERVICE

- 3.4 gallon
1500 PSI
- 4 gallon
2000 PSI



- 4.4 gallon
2500 PSI
- 5.1 gallon
3600 PSI

Portable or
Stationary

Soap Injector
available on
all models

2000 PSI Model Shown

16 years experience making our own pressure washers. We will make one to your specifications. We use quality U.S.-made Hypro pumps (2 yr. warranty) and Honda engines. Rotating Power Nozzle Available. Call today for prices.

D.S. MACHINE SHOP

238B Old Leacock Rd., Gordonville, PA 17529
(717) 768-3853

We Stock



VEGETABLE GROWING EQUIPMENT



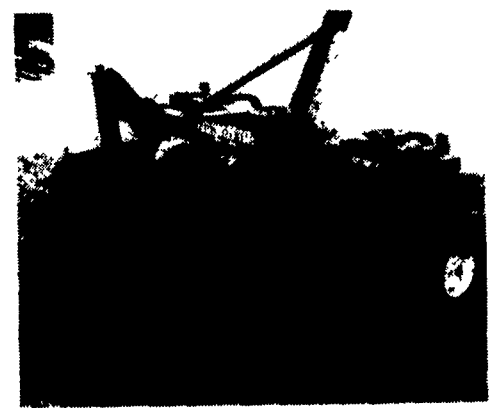
Model 1400 Planter



Raised Bed Mulch Layer Model 2500



Flat Bed Mulch Layer, Model 560



Automatic Reset Mulch Lifter



Specializing In Vegetable Growing Machinery,
Irrigation Equipment And Supplies, Free Catalogue

RAIN-FLO IRRIGATION

884 CENTER CHURCH RD EAST EARL, PA 17519
(717) 445-8978