

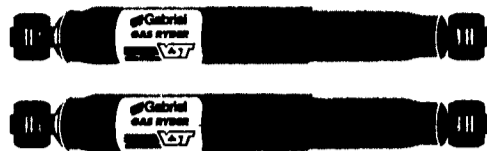


EPHRATA AUTO PARTS

"The Right Part At The Right Price"

1775 W. Main St. Ephrata 717-733-2880
 1109 Division Highway Blue Ball 717-355-0717

BUY ANY 2 GAS RYDER SHOCKS SAVE \$10 PER PAIR!



OR BUY ANY 2 GAS RYDER STRUTS SAVE \$20 PER PAIR!



APRIL 1 - MAY 31

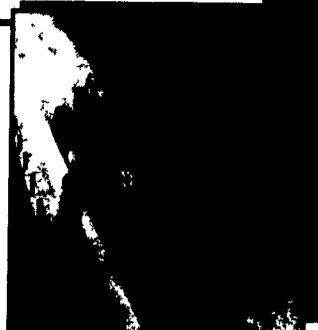
SPRING REBATE

ON PREMIUM PRODUCTS BY MAIL IN REBATE



3000 Series Reel Auggie Mixer

LESS PRESSURE, FRICTION, AND WEAR...
 FASTER MIXING AND BETTER FEED QUALITY...
 ALL FEATURES OF THE KNIGHT REEL AUGGIE



3000 SERIES REEL AUGGIES FEATURE THE FOLLOWING ADVANTAGES:

- Blends by gently lifting, fluffing, and tumbling the entire load, reducing mix time, power requirement, machine wear, and dead spots
- Aggressive upper and lower auger with hardened, replaceable knives, for thorough end-to-end movement
- Shear angle for both the upper and lower auger
- Simple slide tray or three auger discharge as available
- Oil bath drive with external grease banks
- Constant Velocity PTO with integral slip clutch
- Hav-Max Kit option for better break-up of most hay and bulk materials
- Tow, truck mounted, and stationary units from 147 to 488 cubic feet

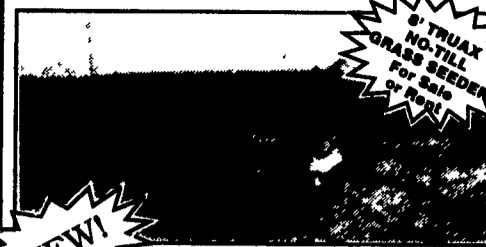
Simply... the Best

USED EQUIPMENT

- 2120 Knight w/Scales Complete
- Knight Little Auggie w/Scales, Portable
- 3300 VD Slinger Rank
- VD Lagoon Pump, Demo
- 2120 Knight Mixer, 100 cu. ft. stationary
- Dynavent Bedding Chopper, 11 HP Honda, good cond.
- Water pump w/Honda Engine, set up for propane
- Amish storm front carriage - \$1,600

MILLCREEK FENCE & FARM SYSTEMS
 2285 Old Philadelphia Pike
 Lancaster, PA 17602 — (717) 396-8987

I & J MANUFACTURING



NEW!

FEATURES: Forms a fluffy windrow without roping. Turns hay upside down. 10 ft. raking width or 12 ft. including windrow. Available in 3 pt. PTO or trailing ground drive or PTO. Lever operates from the cart which raises and lowers the rake also engages or disengages the gear.

OPTIONS: 20" Steel wheels or rubber tires or tandem axle.



3% OFF All Cultivators & Rakes thru APRIL

I & J MANUFACTURING

Jacob & Alvin Blank •
 5302 Amish Road • Gap, PA 17527
 717/442-9451
 (Please call between 8:45 & 9 AM)

WELL BUILT Rack Wagons



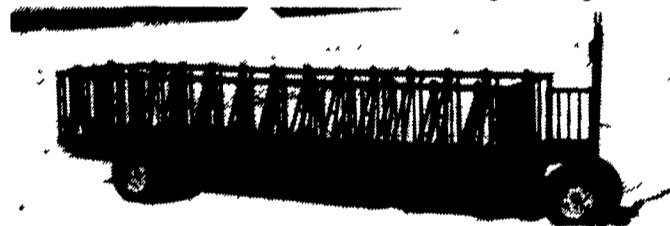
8' wide; 8' high; 16', 18' & 20' lengths
 9' wide; 8' high; 16', 18' & 20' lengths

Description & Material Used:

- Two 4x8 fir stringers
- 3x4x8' oak cross members bolted to the fir stringers
- 18 ft. wagons have 9 cross members and 20 ft. wagons have 10 cross members
- Oak flooring nailed to the cross members with screw nails
- Racks are made out of 2" square tubing - 14' gauge - 1" square tubing between the uprights
- Swinging door at the back of the wagon; has quick release and swings 270 degrees one way
- Two 4' side openings with quick chain release
- Racks can be easily dismantled
- Painted John Deere Green or New Holland Red

FEEDER WAGONS

16', 21' and 27' lengths
 Available with slant bars or self-locking head gates.



A great feature for feeding cattle in meadows or in feed lots. These wagons can be used to feed round hay bales, square bales or silage out of Ag bags or silos, etc.

The added feature of having the head locks make it nice for quick vet checks, etc.

- 16' has 20 head locks
- 21' has 26 head locks
- 27' has 32 head locks

• Feeder bottoms are sand blasted to remove rust & lead

Manufactured By:



Dealer R.D. #1 Box 701, Honey Brook, Pa. 19344
 Inquiries 610-273-3603
 Welcome

For More Information Contact:

Clinton Tractor & Implement Co.
 Clinton, New York
 315-853-5701

Derstein Farm Equip.
 East Berlin, Pa.
 717-292-1858

Walter G. Coale, Inc.
 Churchville, MD
 410-879-1491

James Bergen
 Slate Hill, New York
 914-355-4571

BHM Farm Equipment
 Annville, Pa.
 717-867-2211

Binkley & Hurst Bros. Inc.
 Litz, PA
 717-626-4705

Rolf Grellsmann
 Nicholson, Pa.
 717-222-4432

Fosterdale Equipment
 Fosterdale, NY
 914-932-8611

Zimmerman Farm Service
 Bethel, PA
 717-933-4114

Shade Mountain Rental & Supply
 Port Royal, Pa.
 717-436-9728

Millard Equipment Inc.
 Lowville, NY
 315-376-2722

Herman Steffens
 Detour, MD
 410-775-2324

APRIL SPECIALS

Brillion FIELD CULTIVATOR



18 ft. Hyd. Fold w/Rear Harrow
SPECIAL PRICE

Brillion SOIL BUILDER

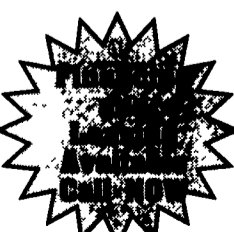


9-Shank Soil Builder w/Hyd. Slicer Gangs - DEMO
SPECIAL PRICE

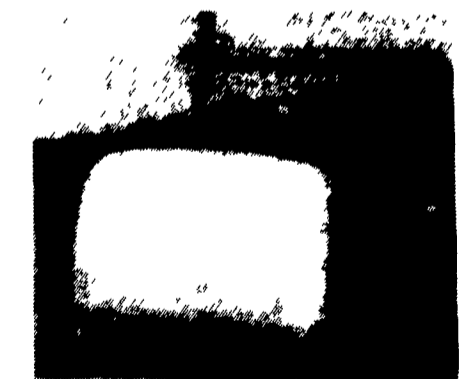
UNL HEADQUARTERS

We Will Mix and Match to Create a Family To Fit Your Budget.

- 705 Diesel Power Unit-Cab 1350 Hrs., Clean
- 708 Diesel Power Unit-Cab, Air, Hydro, 1700 Hrs.
- 709 Diesel Power Unit, Cab, Air, Hydro, 4WD, 4500 Hrs.
- 709 Diesel Power Unit, Cab, Air, Hydro, 4WD, 4900 Hrs.
- 802 Diesel Power Unit Cab, Air, Hydro, 4WD, 1750 Hrs.
- 868 Chopper - 8 Knives, 2 To Pick From - Nice
- 767 Chopper - 6 Knives, Real Clean
- 866 - 7 Ft. Hay Pickup Gauge Wheels, Sharp
- 766 6 Ft. Hay Pickup 3 to Pick From 1 w/Gauge Wheel
- 6280 7 Ft. Hay Pickup w/Gauge Wheels (JD)
- 768 3RWN Harvester Corn Head, 2 to Pick From
- 763 3 RN Harvester Corn Head
- 717 Combine w/Variable Drive
- 815 15 ft. Flex Grain Platform
- 844 4RN Stripper Plate Corn Head
- 728 4RN Stripper Plate Corn Head
- 737 12 Roll Husking Bed, Nice
- 838 16 Roll Husking Bed
- 839 16 Roll Husking Bed, 2 to Pick From



FARMLUND INC. ROUND BALE WRAPPER AND MOWER



- Horsepower Requirement 65+
 - Round Bale Width 39" to 60"
 - 2 Sets of Hydraulic Remotes Required
 - Round Bale Diameter 54" to 60"
 - Wrapping Time - Approx. 2 Minutes
- IN STOCK - SPECIAL PRICE**

JUST TRADED

- Shaver 3 pt. HD-8, Post Driver
- Dion 3-Beater Forage Box, Roof & Gear
- Gehl 940 3-Beater Forage Box Roof & Tandem Gear
- Brillion 12 ft. Packer, 4" Axle
- IH 4130, 25 HP Skid Loader, 2-Buckets

Umberger's Of Fontana, Inc.

Rt. 4, Box 545, Lebanon, PA 17042 8 Miles E. of Hershey on Rt. 322
 717-867-5161 or 1-800-261-2106

Hours:
 Mon. thru Thurs
 7:30-6
 Fri. 7:30-8
 Sat. 7:30-4