

**Leesport Livestock**

LEESPORT, PA  
APRIL 10, 1996  
CATTLE: 355; PDA Supply included  
165 slaughter steers & heifers & 64 feeder

cattle. Compared with last week's sale, slaughter steers mostly steady to 1.00 lower, cows .75 to 1.00 lower.  
STEERS: Few Choice 1085/1445 lbs. 57.00-59.25, Select 52.50-57.50, few Standard 47.00-48.50.  
HOLSTEINS: Few High Choice and Prime 1335/1550 lbs. 55.00-56.75, Choice

\*1215/1700 lbs. 51.50-55.25, Select 47.00-51.75, Standard 39.00-45.00.  
HEIFERS: Choice 1095/1350 lbs. 56.75-58.75, Select 50.25-55.25, few standard 36.00-46.75.  
COWS: Breaking Utility and Commercial 33.00-37.25, Cutter and Boning Utility 30.25-34.50, Canner and Low Cutter 27.00-31.50. Shells down to 19.00.  
BULLOCKS: One Choice at 56.00, Select 45.50-53.00.  
BULLS: Yield Grade No. 1 1110/1940 lbs. 38.00-40.25, one 44.00, No. 2 860/1490 lbs. 36.00-39.00, one 33.00.  
FEEDER CATTLE: STEERS: Medium & Large Frame No. 1 450/575 lbs. 50.00-63.00, Large Frame No. 2 325/775 lbs. 50.00-53.00; HEIFERS: Medium Frame No. 1 350/600 lbs. 40.00-54.00, few 610/840 lbs. 31.00-42.00; BULLS: few Medium Frame No. 1 310/510 lbs. 34.00-52.50, Large Frame No. 2 440/895 lbs. 43.00-50.00.  
CALVES: 118.

**Lancaster Farming, Saturday, April 13, 1996-A19**

VEALERS: Few Good 120/185 lbs. 45.00-60.00, Standard and Good 80/100 lbs. 30.00-32.00, Utility 50/95 lbs. 19.00-28.00.  
FARM CALVES: Holstein bulls 5.00 higher. No. 1 Holstein bulls 90/120 lbs. 72.50-87.00, No. 2 80/120 lbs. 32.00-60.00; few No. 1 Holstein heifers 90/110 lbs. 105.00-132.50, few No. 2 80/100 lbs. 35.00-70.00. Beef cross bulls and heifers 80/120 lbs. 60.00-85.00.  
HOGS: 152; Barrows and gilts .25 to .50 lower, sows 2.00 to 5.00 higher.  
BARROWS AND GILTS: US 1-2 225/260 lbs. 48.35-49.75, one lot 50.25, US 1-3 220/270 lbs. 46.50-48.00.  
SOWS: US 1-3 320/515 lbs. 31.00-34.25, 525/650 lbs. 34.00-36.00.  
BOARS: 265/460 lbs. 26.00-28.00.  
FEEDER PIGS: 109; US 1-3 25/55 lbs. 72.50-82.50, on lot 92.50 per cwt.  
SHEEP: 79; SLAUGHTER LAMBS: Choice 30/65 lbs. 185.00-225.00, one lot 25 lbs. 2.70, 65/75 lbs. 137.50-175.00, few Choice Old Crop 140/145 lbs. 76.00-90.00.  
SLAUGHTER SHEEP: 15.00-43.00.  
GOATS: 46; Few Large 65.00-70.00, one 114.00, Medium 47.50-57.50, few small 34.00-35.00, Large Kids 42.50-57.50, Small Kids 15.00-30.00 per head.

CHOICE HEIFERS: 52.00-56.75.  
SELECT HEIFERS: 44.00-50.00.  
COMMON HEIFERS: 33.00-40.50.  
COMMON FEEDERS: 21.00-46.00.  
BULLS: 34.00-43.75.  
HOGS: 48.00-48.50.

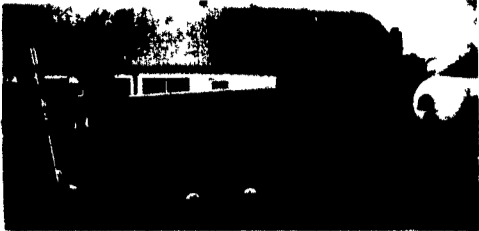
**Front Royal Horse Sale**

Front Royal, Va.  
Saturday, April 6, 1996  
149 HEAD SOLD BY THE HEAD, ALL WEIGHTS ESTIMATED.  
RIDING HORSES, SERVICEABLE AGE: AVERAGE TO GOOD QUALITY, 925-1175 LBS. 550.00-850.00; 800-900 LBS. 410.00-600.00.  
BETTER QUALITY: 950-1300 LBS. 810.00-1130.00; 800-900 LBS. 520.00-850.00; EXCELLENT QUALITY 1000-1250 LBS. 1300.00-1500.00.  
RIDING PONIES: SMALL 320.00-500.00; LARGE 345.00-775.00.  
LOOSE HORSES: AVG. TO GOOD FLESH, 925-1200 LBS. 640.00-890.00, FEW 960.00-1085.00.

**Pennsylvania Livestock**

WAYNESBURG, PA  
APRIL 11, 1996  
CATTLE: SLAUGHTER COWS: Utility and Commercial 30.00-35.50; Cutter and Boning Utility 27.00-34.50; Canner and Low Cutter 20.00-27.50; Shells 20.00 and down.  
BULLS: Yield Grade 1 1500/2000 lbs. 36.00-44.50; Yield Grade 2 1000/1400 lbs. 32.00-40.50.  
FEEDER STEERS: M&L 1 300/500 lbs. 45.00-57.50; 250/280 lbs. 40.00-60.00; M 600/900 lbs. 40.00-60.00; HEIFERS: M 1&L 300/500 lbs. 35.00-50.50; L 1 400/650 lbs. 34.00-42.50; BULLS: M&L 1 300/620 lbs. 36.00-50.00.  
CALVES: Veal: Prime 55.00-70.00; Choice 50.00-64.00; Good 40.00-48.00; Farm Calves: #1 Holstein Bulls 90/120 lbs. few 40.00-65.00; #2 Holstein Bulls 80/100 lbs. few 20.00-42.00; Beef X Bull & Hfr/Hd 35.00-60.00.  
HOGS: Barrows and Gilts #1-2 210/255 lbs. 42.00-50.00; #2-3 255/280 lbs. 38.00-46.50; Sows: #1-3 300/500 lbs. 30.00-38.50; Feeder Pigs: 1-3 25/35 lbs. 10.00-24.00/hd.  
LAMBS: High Choice 30/100 lbs. 95.00-124.00; Choice 90/105 lbs. 85.00-115.00; Feeder Lambs: Good 75.00-94.00; Sheep 20.00-40.00.  
GOATS: Large 50.00-85.00/hd; Medium 30.00-50.00/hd; Small 10.00-34.00/hd.  
HORSES: Horses 40.00-62.00; Ponies 28.00-45.00.

**SOYBEAN ROASTING ON YOUR FARM**



**PUT "VALUE" IN YOUR GRAIN AND NEVER LEAVE THE FARM**

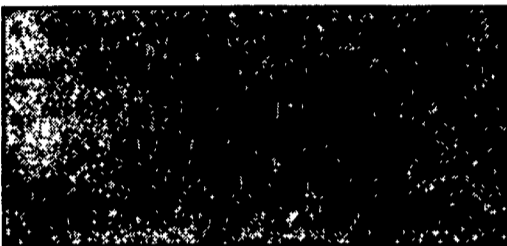
**Economic Value:**

- We Roast Your Beans
- Avoid Trucking Expenses
- Avoid Docking

**Nutritional Value:**

- Increased Palatability
- Uniform Golden Appearance
- Cooling for Immediate Storage Available

**ONLY WE CAN GIVE YOU "FLAME-KISSED" QUALITY**



**Horst Grain Roasting**  
3040 Penns Grove Rd.  
Lincoln University, PA  
(Chester Co.) (610) 869-8834

**David N. Groff**  
RD 3, Lewisburg, PA  
(717) 568-1420

**GOOD'S LIVESTOCK, INC.**



■ Market Hogs ■ Sows  
■ Boars ■ Cull Pigs

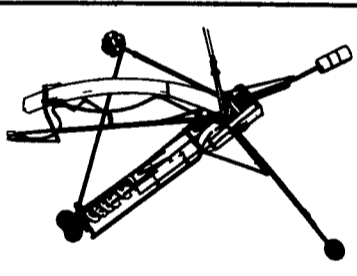
Rt. 897 - 1 mile North of Fivepointville  
(717) 445-5776 • FAX (717) 445-8963

**Jersey Shore Livestock Market, Inc.**

Auction every Thursday at 4:00 p.m.  
Jersey Shore, Pa.  
Report supplied by Auction Thursday, April 11, 1996  
RETURN TO FARM CALF 50.00-110.00.  
COMMON VEAL: 15.00-48.00.  
CHOICE STEERS: 51.50-57.50.  
SELECT STEERS: 44.00-50.50.  
COMMON STEERS: 35.00-43.75.  
COMMERCIAL COWS: 28.00-36.50.  
CANNERS-CUTTERS: 25.00-34.75.  
SHELLS: 15.50-24.75.

0% - 12 Mos. 5 Months  
4.9% - 24 Mos. OR Waiver Of  
7.9% - 36 Mos. Financial

...Now Available On Most Badger Equipment!



**Pack Drive Silo Unloader Badger Frost Busters!**

- Center-mounted blower allows for further travel between doors
- Simple, trouble-free collector ring designed for greater ease of service
- Quick installation and low cost, the ideal replacement unit
- High strength, extra-heavy angle iron frame
- Rugged 10" auger with double flighting on outer end, equipped with heat treated Zinc Dichromated knives
- Heavy-duty chipper wheel shaves silo wall clean



**Ring Drive Silo Unloader**

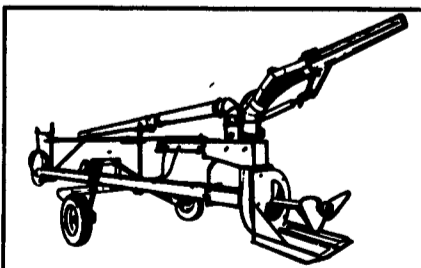
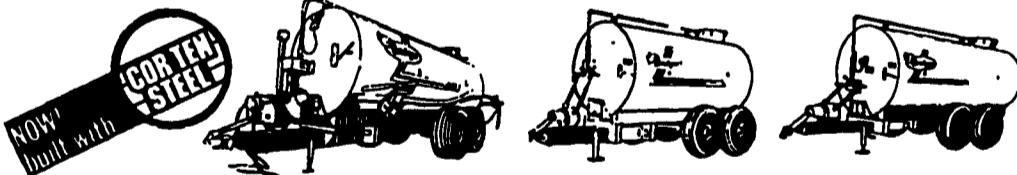


**Badger Forage Boxes... Built for the Long Haul!**



- High-strength alloy steel undercarriage
- 23-1/2" wide high-speed cross conveyor
- Model BN1055 available with heavy-duty corrugated steel roof
- Lifetime warranty on sides and deck

**Badger Liquid Manure Pumps, Spreader Tanks and Box Spreaders**



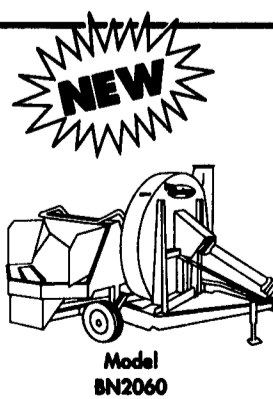
**Badger BN185 Souper Trail Pump/Agitator**

- Up to 26,000 GPM agitation capacity
- Standard 28 foot length extendable to 38 feet for really big lagoons
- Choice of cutter blade or propeller options to match biggest agitation needs
- Exclusive internal shear bar chops even straw-laden manure
- Semi-cupped impeller paddles for high capacity pumping

**NEW... From**



Ask Your Dealer About The All New **BN 104 PUMP**



Model BN2060

**Badger Forage Boxes & Pumping Gear... The Right Combination For Your Farm!**

**Badger Blowers Beat Bottlenecks**

- Designed for plug-proof operation.
- Unload wagons faster, fill silos more efficiently
- Choose from Model BN2054 or New Model BN2060, for bigger silos.
- Rugged, heavy-duty construction.
- Adjustable shear bar prevents hair pinning, carry-over and power loss.
- All material goes up the pipe in the air stream.
- Flexible wind guards minimize spillage.

**See Your Local Badger Dealer**

- HONESDALE SPREADING SERVICE INC.**  
505 Cliff St.  
Honesdale, PA 18431  
(717) 253-2410
- CHIDESTER FARMS**  
RD 2, Box 75  
Kingsley, PA 18828  
(717) 289-4260
- MELVIN G. MILLER**  
RT 2, Spring Mills, PA 16875  
(814) 422-8279
- PIKEVILLE EQUIPMENT INC.**  
RT 2, Oley, PA 19547  
(215) 987-6277
- BHM FARM EQUIP. INC.**  
RR 1, Annville, PA 17003  
(717) 867-2211
- SHOW EASE STALL CO.**  
573 Willow Rd.  
Lancaster, PA 17601  
(717) 299-2536
- DEERFIELD AG & TURF CENTER, INC.**  
RD 2, Box 212  
Watsonstown, PA 17777  
(717) 538-3557
- HEFLIN SALES & SERVICE**  
12312 Oak Hill Rd.  
Woodsboro, MD 21798  
(301) 898-3233
- CHAMBERSBURG FARM SERVICE**  
975 S. Main St.  
Chambersburg, PA 17201  
(717) 264-3533
- SOMERSET BARN EQ.**  
R.D. #5  
Somerset, PA 15501  
(814) 445-5555
- McMILLEN BROS.**  
RD 1 Box 134  
Loyalsville, PA 17047  
(717) 789-3961
- HESS' EQUIPMENT**  
Sales & Service  
RR 3, Mifflinburg, PA 17844  
(717) 966-2720  
966-1998

These capsules clean the arteries, strengthen heart muscles and purifies blood. No conflict with medication, \$15 per month in case lots.