

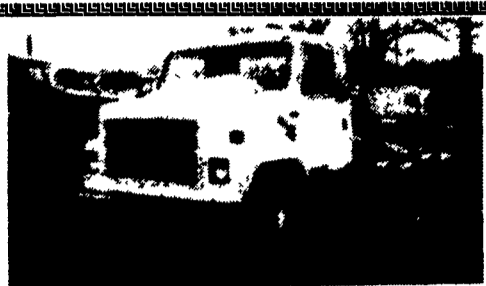
35 TRUCKS & TRAILERS

Gooseneck trailer, 1989 Hillsboro, 24' flat, beaver-tail, 14,000 GVW. 717/445-8550.

Hough-Int. 30 loader. JD 540A log skidder. Tilt bed equipment trailer. (717)286-1084.

Koehring 25 ton truck crane diesel up, gas down, 50 foot boom drag line, clam shell buckets, \$10,500; AC model D road grader, full hydraulics, new finals, \$8500; Rippers for AC HD21 complete \$1500; CAT 3306B, CAT rebuilt \$9000. 518-828-4470 after 6PM. Ask for Ralph.

- 1995 Toyota Tachoma, 4x4, 3000 Miles
 - 1995 Nissan Pickup, 4x4, 3000 Miles
 - Diesel Club Cab
 - 1992 Dodge Dakota LE Club Cab, 4x4
 - 1996 Club Cabs & Pickups (8) in Stock
 - 1996 DAKOTAS In Stock (38)
- ASK FOR MILTON HESS
Certified Truck Specialist
717-367-6644
717-653-6667
Elizabethtown, PA



'90 IHC F-2275, 350 Cummins, 9 Spd., Spring, AC, PS, \$13,900 #G-797

EVANS EQUIPMENT INC.

P.O. Box 248/Lavittown, PA 19059 7800 Route #13/Lavittown, PA 19057
(215)547-7200 Evenings: (609)786-1962 FAX (215)945-8556

CASH FOR USED DIESEL TRUCKS

- WE NEED 1/2 TON TO ONE TON:
- FORD DIESELS
 - SUPERCABS
 - CREW CABS
 - DODGE CUMMINGS
 - 2WD or 4x4
 - DUALIES
 - DUMPS
 - UTILITY BODY
 - FLAT BEDS
 - CAB & CHASSIS
 - SUPER DUTIES

LOW MILEAGE ONLY PLEASE

Before you sell or trade your diesel in somewhere else for LESS, CALL US!

We Pay More for Used Diesel Trucks Than Anyone.

717-949-2000 TRY US!

or 610-678-3243 Ask for Smokey or Kay **KELLER BROS.**

RD 7, Box 405
Lebanon, PA 17042

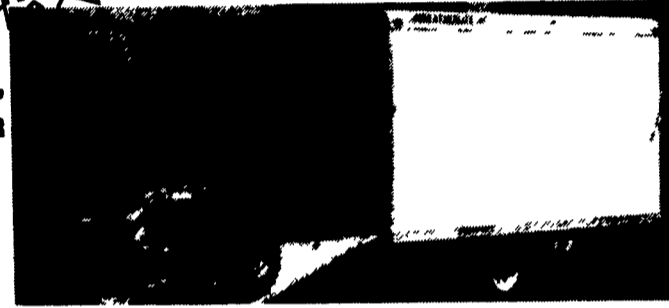
1975 KW 350 Cummins, 13 spd., A/C, PTO, Jake, New rod & main bearing, 10,000 miles ago \$5,000
1982 R Model Mack, 300 Mack, 5 spd., very good condition, A/C, 2 - PTO's \$12,000
Call (610) 970-7867 Leave Message

KEYSTONE PETERBILT

1467 Manheim Pike • Lancaster, PA 17604
717 299-6630 • 800 243-2458



WE NEED YOUR TRADE

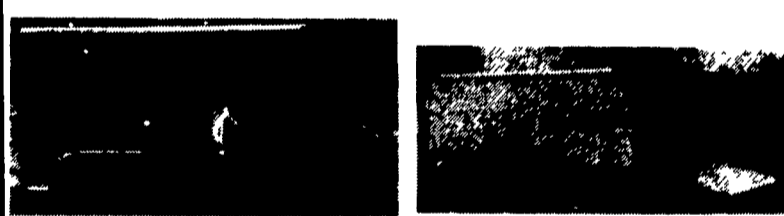
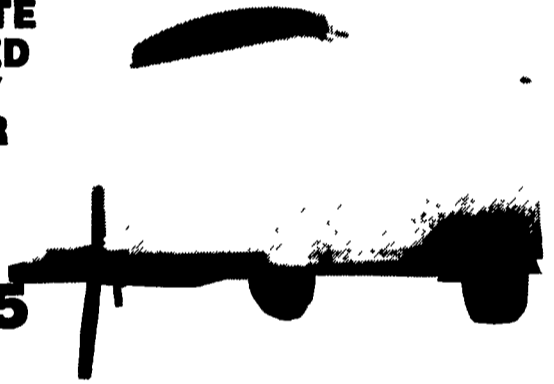


ATV 12' & 20' TRAILER

ECONOLITE ENCLOSED UTILITY TRAILER

5'X8'
2000# Axle
4" Inside Height
Single Rear Door

\$1,675

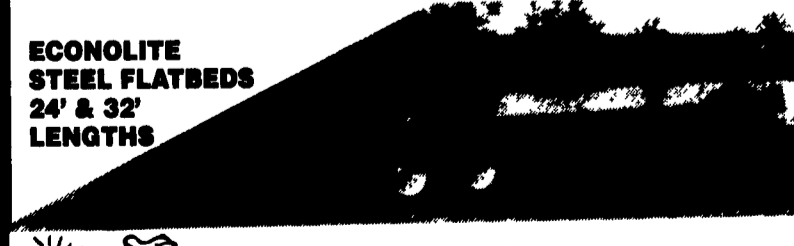


16' STEEL STOCK TRAILER

ALUMINUM STOCK TRAILER



ECONOLITE STEEL FLATBEDS 24' & 32' LENGTHS



4161 Oregon Pike
Ephrata, PA 17522

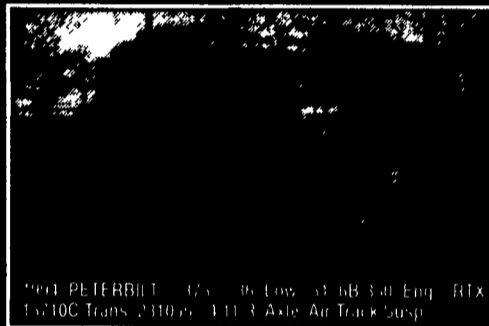
Chevrolet • Oldsmobile • Geo

627-1220 or 859-7700

AT THE BROWNSTOWN EXIT OF RT. 222



1996 PETERBILT 379



1991 PETERBILT 375 36 Low 31 6B 340 Eng. RTX 15710C Trans 211000 111 3 Axle Air Track Susp.



1988 PETERBILT 377

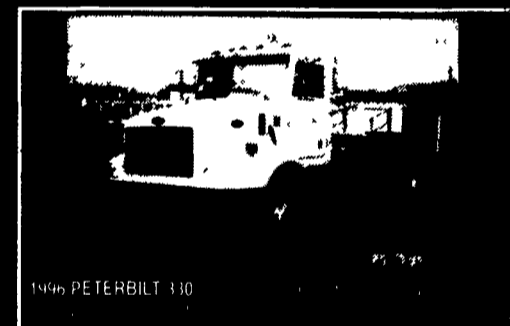


1990 INTERNATIONAL 8200

GOOD SELECTION OF PETERBILT 378'S - EXCELLENT CONDITION FROM LOCAL FLEET WITH GREAT MAINTENANCE



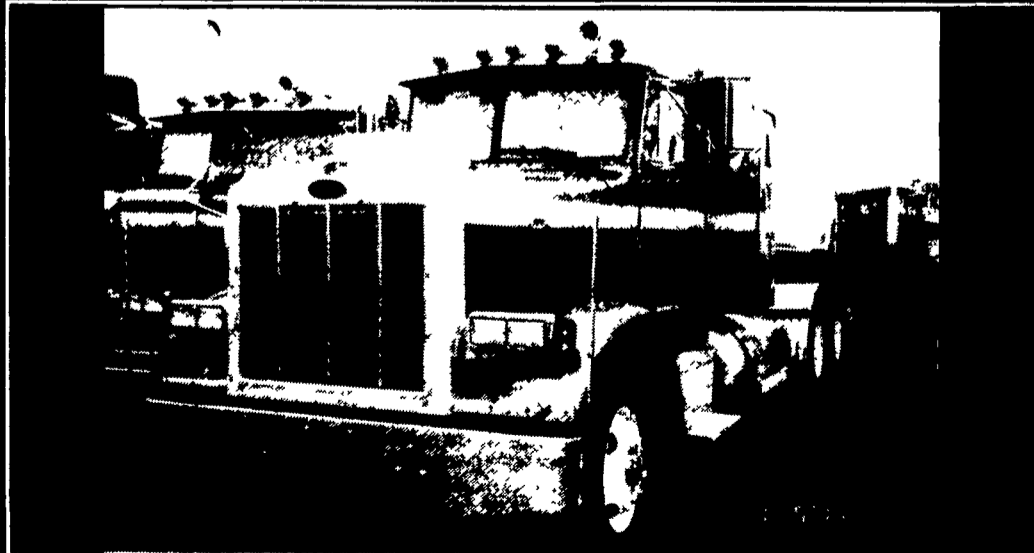
1996 PETERBILT MODEL 385



1996 PETERBILT 330



1987 PETERBILT 350 3106 350 Big Block Cat Eng. RTX 8L 8 Speed Trans 4 1/2 R Axle 13,000 Lb Front 16,000# Rear 20,000# Tag \$69,000 \$55,000 Without Tank



- 1989 Peterbilt 378 48' Raised roof CAT 3406 350hp 9 spd. Air Ride
- (2) 1990 Peterbilt 378 48' Flat Top, CAT 3406 425 hp 18 spd. Air Ride
- (5) 1990 Peterbilt 378 48' Raised Roof CAT 3406 350 hp 9 spd. Air Ride
- 1991 Peterbilt 378 63' Flat Top Detroit 560 425 hp 18 spd. Air Ride