

'89 Ford XLT Lariat, F150, super cab, 302 EFI, 5 spd, PS, PB, air, AM-FM, dual tanks, 64,000 one owner miles, new radials, blue, excellent condition, \$9,900. 717-733-2873

Dunbar boom, mounted on HIAB rolling base, hydraulic powered by 12hp Kohler engine. \$1500. 717-445-4348.

Ford F-700 19' bed, rack over cab, \$1000 OBO. ENGINES: 460 Ford, \$300; 400 Ford, \$200; 350 Chevy \$200. 717-993-2786.

B83 Mack dump, just off jobsite, max brakes, power steering, 5+4 trans, good running cond. \$2,500. Days:(410)398-9004; Eves:(410)398-9430.

Dump Truck: 6 ton, Ford, metal bed, 1957, inspected. \$1,000. (717)872-5403.

'94 Ford XL F150 HD, 300 EFI, 5 spd, PS, PB, AM-FM, dual tanks, 6,250 GVW, new radials, excellent condition, black, \$9,900. 717-733-2873

9 ton Eager Beaver tag trailer, 2 available, \$1,695-\$2,750 OBO. (814)658-3066.

'92 Chevy Tahoe S10, ext. cab, V6, 5 spd, PS, PB, AM-FM cassette stereo, 30,000 miles, red & silver, excellent condition, \$8,975. 717-733-2873

'93 Ford XLT Ranger, long bed, 3.0 V6, 5 spd, PS, PB, air, AM-FM cassette, alum. wheels, blue, 37,000 miles, \$7,900. 717-733-2873

**THOMPSON MOTORS INC.**  
 Repairable Vehicles Bought & Sold  
 Springtown, PA 610-346-8588  
**30 FLOOR CARS IN STOCK, MOST RUN & DRIVE**  
**Specials of the Week**  
 '95 Ford Conversion Van, rec. theft, 4 captains chairs, custom paint.. \$15,000  
 '95 Chevy S10 Blazer, 4Dr., blue/gray, 18k, water damaged.....\$13,900

# Huntingdon Equipment

Rentals Available **GOOD USED EQUIPMENT**

Huntingdon Valley, PA • 215-672-9667 • 1-800-543-3833 • Eddie



Vermeer M-470 Trencher with backhoe. This is one of six units we have all ready to work. Starting at \$4,500.



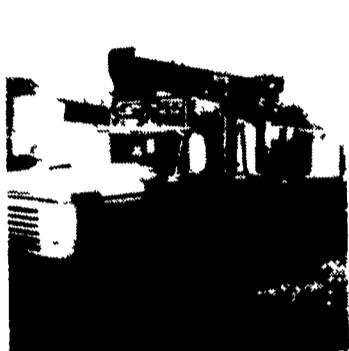
1985 F-600 8.2 Diesel, Auto, 5 Man Cab, Utility With Rollup Door On Rear, Clean, Low Mileage, 1 Left. Priced To Sell!



International Presser Digger This Unit is Ready To Work, Sale Price \$6,500



Pitman Boom with jib 15,000 pounds cap - 4 outriggers. Sale Price \$8,250.00 Won't Last Call Now!!



Need A Lift? We Have A Large Selection Of Boom Trucks Up To 14,000 lbs. Cap. Some With Post Diggers.



Bucket Trucks 28' to 65' Gas and Diesel. Call For Details.

## DIGGER DERRICKS/AERIAL BUCKETS/UTILITY EQUIPMENT



Stuart 48ft. Trailer, Air Ride, Radial Tires, Alum. Ramps, Spare Tire  
**\$5,500**  
 (717) 566-8973



1989 Ford F350/Snow Plow  
 460 Engine Auto., 42,000 Miles  
**\$12,500**  
 Curry Supply Co., Curryville, PA  
 1-800-345-2829

## Mark Vills • Pickups • Broncos • Stake Body • Crew Cabs

Contours • Aspires • Diesel Pickups • Mustangs • Thunderbirds

Explorers • Grand Marquis • XLTs • Custom Vans



**Great Selection F250's & F350's Supercab & Crew Cab**  
 Power-Stroke Diesels In Stock



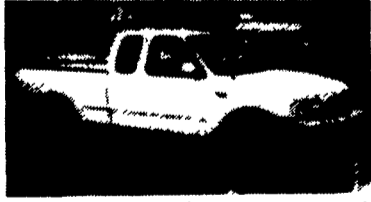
**95 Ford E-250 Super Cargo Van**  
 6 cyl, AT, A/C AM/FM Cass., 18,000 Miles, #PR2662 Was \$18,999 With This Ad **\$18,299**



**94 Ford F-250 Super Cab XLT**  
 4x4, 351 V8, AT, A/C, Loaded, only 25,000 Mi. #P2643 With This Ad **\$24,999**



**95 Leftover Ranger \$5,000 In Discounts**  
 Hurry Only 3 Left



**97 Ford F150 Super Cab**  
 We Have 4 In Stock And More Coming



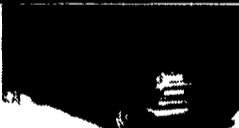
**'96 FORD EXPLORERS**  
 945 A Package  
 20 To Choose From



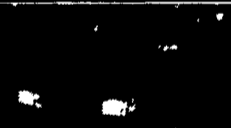
**'96 FORD WINDSTARS**  
 "the Future Of Minivans"  
 10 To Choose From



**'96 FORD F150 4X2 XLT**  
 6 cyl, AT, Loaded, Only 22,000 Miles #1240A Priced at \$16,499



**'94 CHEY SUBURBAN**  
 2500 Series, Silverado Pkg, 4x4, 8.5 Turbo Diesel, Loaded, Dual Air, AT, #P2642  
**HARD TO FIND**



**'94 FORD RANGER SUPER CAB**  
 AT, A/C, C, T, RSW, 27,000 Miles #P2591  
 Priced To Sell **\$17,985**



**'92 FORD RANGER SUPER CAB**  
 4x2, 3L V6, 5-Spd, A/C, AM/FM Cass, Fiberglass Cap, #1445B  
 WILL SELL FOR **\$10,999**



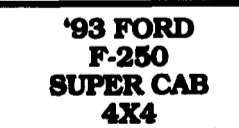
**'94 FORD BRONCO XLT**  
 4x4, 302-V8, AT, 11,000 Miles #2553 A  
 Was \$22,999 NOW **\$19,999**



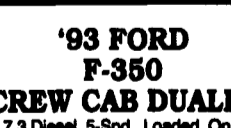
**'94 MAZDA B4000**  
 Super Cab 4x4, A/C, Cassette, 28,000 Mi #P2597  
 Was \$18,499 NOW **\$16,499**



**'92 FORD F-250 4X4**  
 Custom, 460 V8, 5-Spd, A/C, Only 42,000 Miles, #1503A  
 With This Ad **\$21,999**



**'93 FORD F-250 SUPER CAB 4X4**  
 7.3 Diesel, AT, A/C, Meyers Snow Plow, Bedliner, #1538A  
 WILL SELL FOR **\$20,999**

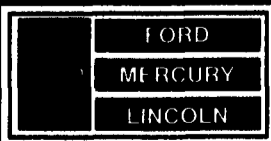


**'93 FORD F-350 CREW CAB DUALY**  
 7.3 Diesel, 5-Spd, Loaded, Only 37,000 Miles, #PR2572A  
 WITH THIS AD **\$23,999**



**'91 EXPLORER XLT**  
 4 Door, 4x4, A/C 60,000 mi. #30108  
 With This Ad **\$13,799**

Unless the Sheehy Emblem is on Your Car or Truck... You Probably Paid Too Much!



# LEBANON

A Division of THE CHAPMAN AUTO GROUP

-20th & CUMBERLAND STS. - RT. 422 WEST  
 9-9 DAILY, 9-5 SATURDAY • SHEEHY HOTLINE (717) 272-7671 OR 533-5293

PARTS DEPT OPEN  
 DAILY 8-5  
 SAT 8-12  
 717-273-8168

Mystiques • Cougars • Continentals • Town Cars • 4x4s • Rangers