

**35 TRUCKS & TRAILERS**

(2) 42' 1979 Fruehauf refer trailers w/Thero-King, SNWD, good running condition, \$2,900. Rollup doors (717)692-4704.

250 Cummins engine and 10 speed Road Ranger trans, ran when taken out, \$250 complete 610-287-0410.

2-horse trailer, extra tall and wide, shoop, good shape, \$2,000. (717)993-5287

(3) R600 Mack Trucks, 1978, 1979, 300 5-spd w/wet line, good condition. (2) Fruehoff dump trailers, 1970, 1974, 28' aluminum tub w/tarps; SS tanker, 1974 Progress, 5600 gal 717/393-5807, Jeff.

427 Chevy truck engine and trans complete, \$750. Can hear run 410-272-6807.

4x4 1978 Chevy Scottsdale 20 pickup, 350 cu. inch w/standard 4sp trans., 120,693 mi., good running work truck, \$2,900; 215/679-8921.

'55 Dodge W tag no bed '65 Mack dump B61. '64-67 Mack TT B68 single axle. '79 Dodge pickup 4WD short bed w/cap. (814)355-2798.

'70 GMC 1-ton dump, re-built 6-cyl., new tires, new paint, great condition, \$2450. 717/938-8358.

'75 Ford, F700, 10:00X20, 16' dump bed good cond., \$3,250. (717)949-3769.

'78 GMC flatbed truck, 19,200 GVW, HD hoist, 12' bed, VG condition, \$6,500 (717)733-6077.

'80 R model Mack, 300hp, 6 speed, 187"WB, strong truck, \$8500. 717-768-8647.

'84 Chevy, 16' grain dump, removable sides, 28,000 GVW, good condition. 717-865-4329.

'88 Chevy C30 single rear whl w/9' Reading utility body, 292.6 cyl., HD, 4 spd, PS, PB, AM-FM, 9,000 GVW, 63,000 one owner miles, dark blue, \$7,900 717-733-2873

88 Ford F250 4x4, 351 AT, AC, Super cab, utility body, snow plow, trailer hookup, 94,000 miles, \$7000. 717/235-3353.

'90 Ford 250 XLT 4x4, diesel, 7.3, automatic, 4 new tires, PS, OD, AC, AmFm radio, HD suspension, trailer package, undercoated, 2-tone, low mileage, like new. (717)698-5601.

'89 FORD XLT Lariat F250, super cab, 460 EFI, auto, PS, PB, PW, PDL, cruise, tilt, air, AM-FM cassette, 8,800 GVW, towing package, 1 owner, excellent condition, \$10,995. 717-733-2873

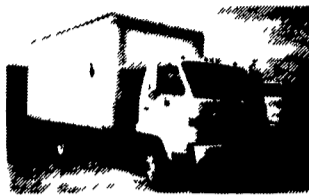
'90 Chevy Silverado 2500 Suburban, 454 auto, PS, PB, PW, PDL, cruise, tilt, dual air, towing package, 34,000 one owner miles, excellent condition, \$13,900. 717-733-2873

'90 Dodge 150, 1/2 ton, 318 EFI, auto, PS, PB, AM-FM, 41,000 one owner miles, new radials, excellent condition, \$7,900 717-733-2873

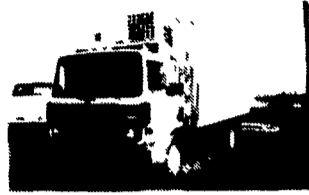
Mack dump truck B67, runs good w/snowplow. \$2,800 OBO. (215)654-9237.



Don't Think Of Them As Used. Think Of Them As Having Undergone Extensive Road Testing



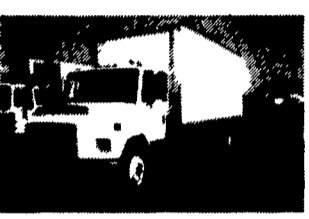
1993 Isuzu NRR 16' 175 hp, 18,000 GVW 201,000 mi



1986 Mack MS300P 175 hp 33,000 GVW Thermoking 341,000 mi



1989 Ford E350, 14', 190 hp, 10,000 GVW AC 144,000 mi



1991 FL 70 22' 24 hp AC 32,000 GVW 194,000 mi



1990 Kenworth, W927VW90, 365 hp, 80,000 GVW 297,000 mi



1989 Mack, NH612, sleeper, AC, 300 hp, air ride, 65,000 GVW, 428,000 mi

- 1992 Int. 4700, 24', AC, 170 hp, 25,500 GVW
- 1990 Intl 8100 SA, FL10-270 65,000 GVW, AC
- 1989 Mack R688ST, 350, 80,000 GVW, AC, 264,000
- 1991 Freightliner FLA8664T, 34" sleeper, 80,000 GVW, AC
- 1992 Int F9300SBA, 42" sleeper, N14-370, Jake Brake, AC, 80,000 GVW



That's because from the day each new vehicle joins our fleet it goes on the most rigorous carefully designed preventive maintenance programs in the industry. With check up after check up. And with one final, painstaking inspection right before it goes on the market. To make sure each and every one of our vehicles meet our Road Ready requirements. So if you're looking for a used truck, look to Ryder. We'll help qualified buyers with financing. And we'll give you a unique, 30 day limited warranty that shows how confident we are about the superiority of our maintenance standards. Call the Ryder location nearest you. Today. And take a Ryder used truck for a little road test of your own.

**Ryder Commercial Leasing & Services**  
6330 Basehore Road, Mechanicsburg, PA 17055  
Contact Bob Boltin (717)691-2201

<p>1985 MACK MIDLINER MS250 C &amp; C, NO MILES ON REBUILT 175 RENAULT ENGINE, 5 speed, Full Air Brakes, PS 32,000 GVW Clean Unit \$8,900</p>	<p>(1) 1986 GMC Brigadier SA, TT, 300 Cummins, 7 Speed, 84" CA, Great Dump Chassis NEW SHEPPARD POWER STEERING New Paint, Great Buys \$8,500</p>	<p>1987 VOLVO WHITE WCM64T TT, 315 BC3 RTO12609, SQ100 m 4 33, 22 5 Radials on Spokes, PS, New Paint, Fleet Maintained Good Value \$10,900</p>
<p>1974 CCC Tri Axle Mixer, 270 Cummins, RT 958LL, 40M Rears, Challenge Mixer. Price with or without mixer \$7,900</p>	<p>1979 KENWORTH K100 AERODYNE TT, 3406A Cat, RT012513, SQ100 24 5 Radials, PS, Good Value \$4,900</p>	<p>1972 DIAMOND REO Tri Axle Mixer, 6-71 Detroit, RT958LL, SQHD Rears, 9 Yard Smith, PS, Price with or without Mixer \$7,900</p>
<p>1987 PETERBILT TT, BCIV Cummins, RT12609, SQ100 Rears, PS, 22 5 Radials on Spokes, Good Runner \$9,995</p>	<p>1986 GMC SA, TT 300 Cummins, 7 Speed, 84" CA, New Paint, Manual \$6,900</p>	<p>1989 PETERBILT TT, 3406B CAT, RT11609, SQ100 Rears on Pete Air Ride, 24 5 Radials on Budds, PS, Good Value \$12,900</p>
<p>1988 FORD 7000 CARGO w/16' Dry Van 6 Cyl Ford Diesel, 5 Speed, 22 5 Radials on Budds, Air Brakes, PS 29 500 GVW \$8,900</p>	<p><b>L10 CUMMINS ENGINES</b> 270HP \$3,500 270 HP w/Jake \$3,750</p>	<p>1986 FORD LN9000 TT, 315 Cummins, RT11609, DS381 Rears on 4 Spring, 24 5 Radials on Dayton, PS, New Paint Good Buy at \$11,900</p>

**FIRESTONE MOTORS, INC.**

330 S. THIRD ST. • LEMOYNE, PA 17043 • (717) 763-7721

ENGINES FOR SALE  
Cummins 160.  
DETROIT ENGINE. 6V53 rebuilt, never run; 318, low miles. Silver 8V92; V671 & 671; Cat 3208; Int. DT466 Mack E6300; 237, 285, 673  
Gas Engine. Dodge 361, Ford 391; 361; Chevy 366, 427, 350.  
Many other parts at reasonable prices  
HAP'S TRUCKS & PARTS  
1-800-839-3338  
Fax 610-944-0758

26' Gooseneck Tri-axle Flat, 22,000 GVW w/Ramps \$3,800

717-222-9815

'85 F-700, 5 spd., 95K mi., good insp., 2,000 lb lift gate, 20' bed Great for orchard farm, construction work \$4,500 FIRM. 717-263-3885 Leave message if no answer



**BODIES**  
(1) 10' Eby Cattle Bodies

(1) 16' Wooden Cattle Body

(1) 17' Eby Cattle Body

**GOOSENECK**

1989 Eby 20'x8'x7' Ruff Neck

1989 Eby 24'x8'x7' Ruff Neck

1988 Wilson 22'x7'x7'

**M.H. Eby, Inc.**

1194 Main Street (Route 23) Blue Ball PA 17506 (717) 354-4971 (800) 292 4752 FAX (717) 355-2114  
4435 State Route 29 West Jefferson, OH 43162 (614) 879-6901 (800) 752-0507 FAX (614) 879-6904

**IN ALUMINUM BODIES EBY BUILDS IT**

M H Eby custom-builds aluminum truck bodies for the agri-transportation market. Nobody offers more sizes and options in

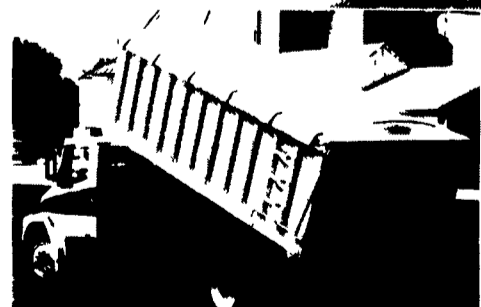
- FLATBED BODIES - Lengths to 32', choice of 5 widths.
- GRAIN BODIES - Lengths to 24', landscape and general purpose dumps to 12'
- LANDSCAPE BODIES - Lengths to 12', We'll build to your specs!

For greater payload capacity, Eby's aluminum design is equal in strength to steel and up to 40% lighter. Our corrosion-resistant components never need painting. That means minimum maintenance, improved appearance and higher resale value.

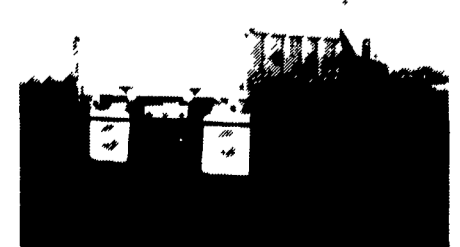
Eby products have superior standard features. And we offer customer options for virtually any application. Agriculture is your business - building bodies to haul it is ours.



1194 Main Street Blue Ball, PA 17506



Let EBY custom build one for you.



800-292-4752