

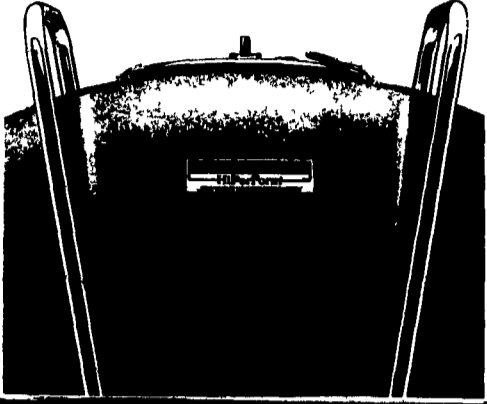
WANTED:

Good Used Milk Tanks - Any Size
No Ice Banks or Girtón

1-800-448-4697

HOW BIG A COOLER DO I REALLY NEED?

Depends on a lot of things. But one thing's certain. Mueller makes the milk cooler that's right for your operation. And it's built to last. So it'll have high resale value the day you need a bigger cooler. For help deciding how big a milk cooler you need, contact your local Mueller dealer.



Martin's Refrigeration, Inc.

Phone (717) 352-2783 1122 Woodstock Rd
Sales & Service Fayetteville, PA 17522

KICK THE HASSLES of water-cooled engines



IT'S AN AIR-TIGHT CASE for Less Maintenance

1. No Antifreeze
2. No Radiator Hoses To Leak
3. No Thermostat or Water Pump Failures

- PLUS -
unparalleled Deutz economy & quality

RUFUS BRUBAKER
REFRIGERATION & POWER
76 Pumping Station Rd.
Quarryville, PA 17566
717-786-1617

Lancaster Farming, Saturday, April 13, 1996-C23

(4) BouMatic Flow Star milker claws and shelves;
(3) Westfalia bucket milkers, complete.
717-524-4360.

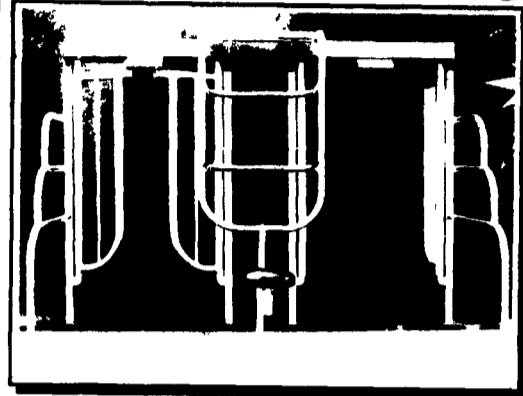
WANTED: Double 6 or larger herringbone milking parlor w/44 or 45" stalls. Must be in good condition. Mid-State Dairy Systems, DeRuyter, NY, 13052, (315)852-9591.

Portable hydraulic tilt table, electric pump, good condition, \$750. (610)932-5977.

SS Pipeline, 2 1/2", 150', out of 14x70 barn, w/7 1/2 hp compressor, for 7 units, only 3 years use, \$6000. Cumberland Co. 717/423-5254.

Universal milkers; independent, double acting 45/55 pulsators \$125. Bou-matic 3hp vacuum pump, motor, reserve tank, oiler needs work \$350. Vacurex controller \$100. 1 1/2" glass pipeline, 8'6"- 9' sections. Make offer. No Sunday calls. (717)862-3669.

NEW from J&D Manufacturing FLAT BARN PARLOR Walk Through



- Three-bar divider
- Swivel seat

FEATURES

- > 10% to 20% the cost of Pit Parlors
- > Utilize your existing facilities
- > Spring activated doors ensure fast efficient operation
- > Greatly increases your production rate
- > Easy to clean and maintain
- > Allows rapid dairy expansion
- > Cows exit individually
- > Reduce labor requirements
- > Increase operator comfort and reduce fatigue
- > Front exit-walk through

For more information contact:

Local Warehouse #301-223-5151
8 am To 5 pm M-F

Now Excepting New Dealers
In Select Areas

Call For More Info. Contact:
Kris Knudsen - Area Manager
717-653-0385 Fax 717-653-0243

Another fine product by:
J&D Manufacturing

ATTENTION BUY OUT FARMERS We Need Good Used Tanks 600 - 6,000 Gal. - Call Us

- | | | |
|--------------------------------|-----------------------------|-----------------------------|
| • 27 SOLD 2700 Gal. Sunet | • 700 Gal. Mueller "OH" | • 1250 Gal. Mueller OH |
| • 300 Gal. Sunet | • 735 Gal. Sunet | • 1250 Gal. V |
| • 300 Gal. Mueller | • 800 Gal. Mueller OH | • 1250 Gal. Mueller OH |
| • 300 Gal. Storage | • 800 Gal. Sunet | • 1250 Gal. Girtón |
| • 300 Gal. Jamesway | • 800 Gal. Darl-Kool | • 1250 Gal. Sunet |
| • 400 Gal. Mueller | • 800 Gal. Mueller | • 1250 Gal. Surge |
| • 400 Gal. Zero | • 800 Gal. Mueller OH | • 1500 Gal. DeLaval |
| • 400 Gal. Mojonier | • 800 Gal. Girtón D-4 | • 1500 Gal. Girtón |
| • 500 Gal. Girtón | • 800 Gal. Mojonier | • 1500 Gal. Surge |
| • 500 Gal. Jamesway | • 800 Gal. Mueller "M" | • 1500 Gal. Sunet |
| • 500 Gal. DeLaval | • 900 Gal. Mueller M | • 2000 Gal. Mueller OH |
| • 500 Gal. Mueller OH | • 1000 Gal. Mueller OH | • 2000 Gal. Girtón D-5 |
| • 500 Gal. Milkkeeper | • 1000 Gal. DeLaval | • 2000 Gal. Surge |
| • 545 Gal. Sunet | • 1000 Gal. Darl Kool | • 2500 Gal. Girtón |
| • 600 Gal. Surge | • 1000 Gal. Sunet | • 2500 Gal. Walker, Storage |
| • 600 Gal. Mueller O | • 1000 Gal. Mueller O | • 3000 Gal. Zero, storage |
| • 600 Gal. Mueller M | • 1000 Gal. Mueller M | • 3000 Gal. DeLaval |
| • 600 Gal. Girtón | • 1250 Gal. Darl-Kool | • 3000 Gal. Sunet |
| • 600 Gal. Milkkeeper | • 1250 Gal. Mueller, Recond | • 4000 Gal. Mueller |
| • 600 Gal. Jamesway - 32" High | | • 4000 Gal. Storage |
| • 625 Gal. Sunet | | • 4500 Gal. Mueller |
| • 700 Gal. Mueller "M" | | • 5000 Gal. Mueller |
| • 700 Gal. Storage | | |

HEAT EXCHANGERS

- Therna Stor 80 • Therna Stor 100
- Mueller Fre Heater 105 Gal.
- Therna Stor III, 120 Gal. • Mueller Fre Heater 50 Gal.
- 300-6000 Gal. Storage Tanks

Installation, Sales And Service

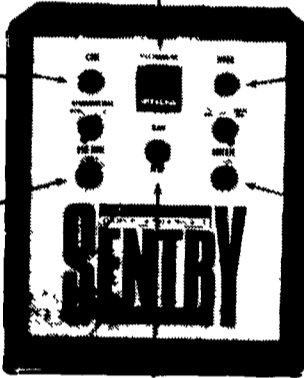
RAY SHENK

505 E Woods Drive Lititz, PA 17543
Sales 717-626-1151 24 Hr. Service

FOR MORE INFORMATION ON COOLING CONTROL, CHECK HERE.

OR HERE. Blue light flashes to indicate which cooling units are engaged.

OR HERE. Flashing green lamp denotes pre-cooling cycle during subsequent milkings



OR HERE. Amber lamp allows wash, rinse, or sanitize cycle

OR HERE. Green lamp indicates current agitation cycle.

OR HERE.

Red light flashes when milk is above 43°F or below 35°F

The new Mueller® Sentry™ is the only refrigeration control system that gives you all the information you need to monitor your milk cooling and cleaning functions at a glance. And Sentry allows you to control and customize all cycles to fit your milking schedule. With Sentry, cooling control has finally entered the Information Age.

THE MILK COOLING SYSTEMS SPECIALISTS™

GOOD USED TANKS

- | | |
|--------------|------------------|
| 600 Gal. O | 1000 Gal. OE |
| 600 Gal. M | 1500 Gal. O |
| 600 Gal. OE | (2)-1500 Gal. OE |
| 1000 Gal. OH | 2000 Gal. O |

Trust! We Work At It.
AUTH. MUELLER DEALER

PRIEST'S REFRIGERATION

20205 Marsh Haven Lane, Hagerstown, MD 21742

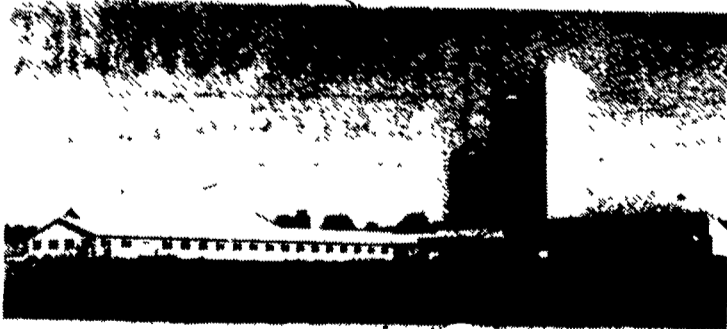
301-797-3921

24 HOUR SERVICE

Smucker Construction

135 Churchtown Road
Narvon, Pa. 17555

Call us today for all
your building needs
717-768-8606
717-768-3264 (Fax)



40'x200' Dairy Barn
128' Heifer and dry cow
barn with pit and
slatted floor

MEMBER



NOTICE

Effective on **MAY 1st, 1996** E-Zee Milking Equipment will only take orders by phone or mail. **WE WILL NO LONGER BE OPEN TO THE PUBLIC** except for prearranged pickups or appointments. Stainless welding, pulsator repairs and electronic circuit board repairing will be done at the shop as usual, **BUT ONLY BY APPOINTMENT**, or we will be glad to recommend other local dealerships that offer these services to you on your farm. We will continue to retail new and rebuilt equipment and wholesale to other dealers as usual, but **OUR BUSINESS WILL NOT BE OPEN TO THE PUBLIC**. Also our current policy of **FREE U.P.S.** (on orders over \$20.) **BUT NO** on the road delivery service or repair services will continue (except for some exceptions on large orders, wholesale orders, etc.). I apologize for any inconvenience this may cause, but we are no longer able to operate properly under our current system and I would rather not continue expanding.

Thank You,

Emanuel S. Zook

E-Zee Milking Equip. Inc.

3910 E. Newport Rd.
Gordonville, PA 17529

717-768-7599