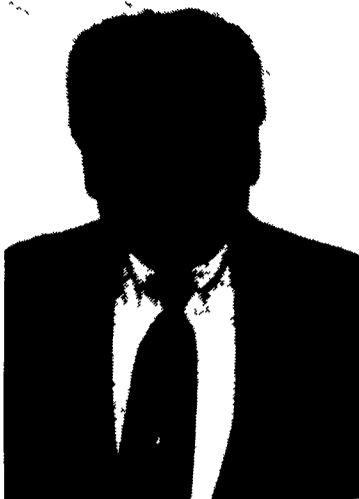


# Retires



**LANCASTER** (Lancaster Co.) — James Grosh, Keystone Farm Credit employee, has retired after 29 years of service.

Grosh started with Farm Credit in 1967. At the time, there were two offices—one in Lebanon and the main office in Lancaster. He held a variety of positions throughout his career, including loan officer, branch manager, vice president and real estate appraiser.

When licensing for appraising real estate became mandatory, Grosh completed the necessary training and was certified with the commonwealth of Pennsylvania as a general class appraiser. His appraisal territory included Lancaster, Lebanon, Dauphin, Schuylkill and Berks counties.

# Ag Students Prepare For Celebration

COLLEGE PARK, Md. — Every year, on the last Saturday in April, College of Agriculture and Natural Resources students show that agriculture goes beyond farming and is a unique and growing part of the urban-oriented University of Maryland at College Park (UMCP).

The 71st anniversary of Agriculture Day at UMCP will take place on April 27, rain or shine, and will provide activities involving new dimensions of agriculture, as well as long-time favorites. The festive atmosphere will include a bug zoo, educational and computer displays, livestock fitting and showing, a petting zoo, food concessions and live entertainment.

"Many people will be surprised by the way in which agriculture touches their lives," said Dr. Marla McIntosh, associate dean of the College of Agriculture and Natural Resources. "Ag Day will involve many active learning displays, entertaining events and demonstrations that allow people to discover what's new and exciting in agriculture."

Some of those active learning displays are the Heart Smart Nutrition computer demonstration, which includes a diet assessment; Kids Growing with Grains, where kids of all ages can make grain sculptures; an aquaculture system; World wide Web demonstrations to "surf" the best agricultural web sites; and a tour of the university's state-of-the-art pilot processing plant to see ice cream made.

Student representatives from 12

clubs will be selling food, plants, T-shirts, and goldfish. The UM Calvary will sell golden horseshoes and calvary hats, and present a videotaped educational drill. The Institute of Applied Agriculture will have a putting green to show how fields of study like turf management affect recreation.

Most activities will take place in the livestock barns area and the Animal Science/Ag Engineering Complex at the intersection of Regents Drive and Farm Drive. The event will run from 9 a.m. to 4 p.m., and parking and admission are free.

Ag Day is sponsored each year by the Agricultural Student Council at UMCP, with cooperation from student organizations in the

College of Agriculture and Natural Resources. The council chose "Maryland's Urban Country—Still Making History" as the theme for this year's Ag Day.

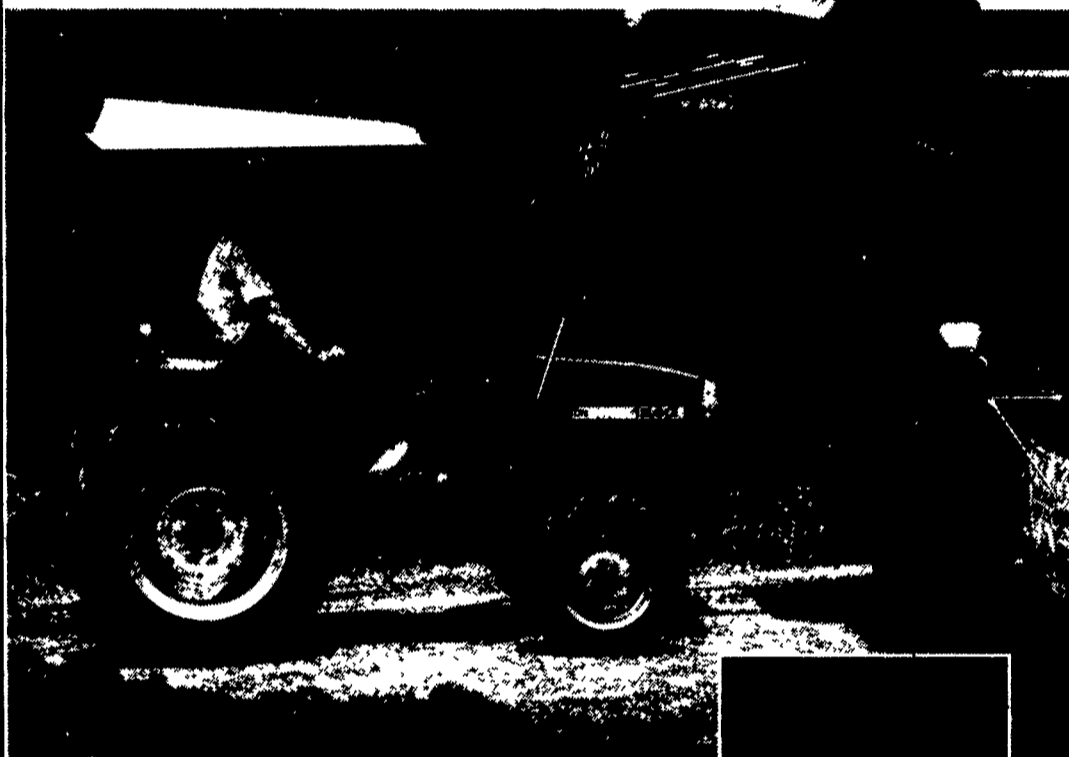
"The theme really reflects agriculture in this area and points out that it's still a viable industry," said Allison Miller of Gaithersburg, president of Agriculture Student Council. "The fure of agricul-

ture is exploring science and technology, and Ag Day is a way to learn about the industry while having something of interest for people of all age." Miller is an animal sciences senior at the University of Maryland.

Ag Day at Maryland has been an annual event since 1925. It is one of the oldest collegiate agriculture showcases in the nation.

**GIGANTIC SELECTION**  
IN  
**Lancaster Farming's CLASSIFIEDS**

# Raising Expectations



## Forget everything you've heard about compact tractors.

MF 1200 Series Tractors and implements perform way beyond their size and price. Precise lawn mowing. Heavy duty weed and brush clearing. Serious gardening. Landscaping. Materials handling. Trenching. Even light field work. These tractors excel at jobs that used to require big, expensive, fuel-thirsty tractors and implements.

Standard features include water-cooled, 3-cylinder, diesel engines, 3-point hitch and high-capacity auxiliary hydraulics, and rear PTO (Mid-PTO is also standard on the 1210, 1220 and 1230). Chose two or four-wheel drive ag or turf tires, hydrostatic or synchro-shuttle transmission.

MF® Compacts sized to your needs						
Model	1210	1220	1230	1240	1250	1260
Gross engine hp	18.1	21.1	26.6	27	32	37.3

Stop by your local Massey Ferguson™ dealer today and see why MF 1200 Series tractors are constantly exceeding their owner's expectations.



Massey Ferguson is a wholly owned subsidiary of AGCO Corporation, Dalton, GA.

## SEE YOUR NEAREST DEALER FOR DETAILS

**C.J. WONSIDLER**  
1975 Trumbauersville Rd.  
Quakertown, PA 18951  
(215) 536-1935  
Routes 309 & 100  
New Tripoli, PA 18066  
(610) 767-7611

**D.W. OGG EQUIPMENT CO.**  
5149 Cap Stine Rd.  
Frederick, MD 21701  
(301) 473-4250  
Westminster, MD  
(410) 848-4585

**ECKROTH BROS. FARM EQUIPMENT**  
RD #2, Box 24A  
New Ringgold, PA 17960  
(717) 943-2131  
4910 Kernsville Rd.  
Orefield, PA 18069  
(610) 366-2095  
307 Edgar Ave.  
Bloomsburg, PA 17815  
(717) 784-5217

**HERNLEY'S FARM EQUIPMENT, INC.**  
2095 S. Market St.  
Elizabethtown, PA  
(717) 367-8867

**LAWN CARE OF PA**  
Martindale, PA 17549  
(717) 445-4541

**LEBANON VALLEY IMPLEMENT CO.**  
700 E. Linden St.  
Richland, PA 17087  
(717) 866-7518

**M.M. WEAVER & SON**  
N. Groffdale Rd.  
Leola, PA 17540  
(717) 656-2321

**MEYERS IMPLEMENTS, INC.**  
400 North Antrim Way  
Greencastle, PA 17225  
(717) 597-2176

**MID-STATE EQUIPMENT CO., INC.**  
1462 River Rd. (Rte. 29)  
Titusville, NJ 08560  
(609) 737-7400  
(908) 782-2244

**MILLER EQUIPMENT CO.**  
Stauffer Road  
Bechtelsville, PA 19505  
(610) 845-2911

**PEOPLE'S SALES & SERVICE**  
Oakland Mills, PA 17076  
(717) 463-2735

**FRANK RYMON & SONS, INC.**  
399 Route 31 South  
Washington, NJ 07882  
(908) 689-1464

**SCHREFFLER EQUIPMENT**  
Pitman, PA 17964  
(717) 648-1120

**S.G. LEWIS AND SON**  
West Grove, PA 19390  
(610) 869-9440  
(610) 869-2214

**TEST DRIVE ONE TODAY!**



**MASSEY FERGUSON**

ROLLING ON...IN THE 90'S



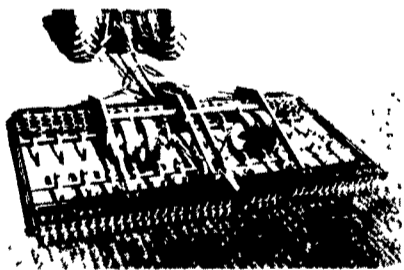
MEETS THE CHALLENGE

**M, MD, ML & WL PULVI-MULCHERS**  
7'4" THRU 30'

For More Information Contact Your BRILLION DEALER

**BETTER SEEDBEDS...BETTER YIELDS**

**M, MD SERIES**  
7'4", 10'4", 12'4", 13'8" and 15'



**ML03 SERIES**



ML Pulvi-mulchers feature the 20", six-spoke ductile iron notched roller wheel and now available with 20" ductile iron crowfoot wheel. The Brillion Pulvi-mulcher crushes both surface and buried lumps and converts fall and spring plowing into a clod-free seedbed. The ductile iron wheels carry a five-year warranty against breakage. Available in 12'6", 13'10", 15'2" and 18'9"

**WL03 SERIES**



The WL is the latest example of how Brillion has met the challenge of the earth and competition. The front rollers break up surface clods. "C" shaped ribbon teeth or "S" spring tine teeth break up the soil to 6" in depth and pull clods to the surface. Available in 21'6", 25' & 30' Widths. Ductile Roller Wheels firm without compaction.

**Pennsylvania**

- ADAMSTOWN Adamstown Equip. Inc.
- ALLENTOWN Lehigh Ag Equipment
- BECHTELSVILLE Miller Equip. Co.
- CARLISLE Gutshall's, Inc.
- DOVER George N. Gross, Inc.
- EASTON Geo. V. Seiple
- ELIZABETHTOWN Messick Farm Equipment Co.
- INTERCOUSE C. B. Hooper & Son
- GREENCASTLE Meyers Implement
- LANCASTER Landis Brothers, Inc.
- LEBANON Umberger's of Fontana
- LOYSVILLE Gutshall's, Inc.
- LYNNPORT Kermit K. Kistler, Inc.
- NEEDMORE Clugston Farm Equipment
- NEW HOLLAND A.B.C. Groff, Inc.
- OAKLAND MILLS Peoples Sales & Service
- OLEY Pikeville Equipment, Inc.
- QUARRYVILLE Grumell Farm Service
- TAMAQUA Charles Snyder, Inc.
- WATSONTOWN Dearfield Ag & Turf Center, Inc.
- WEST GROVE S.G. Lewis & Son, Inc.

**Maryland**

FREDERICK Ceresville Ford New Holland

**New Jersey**

- BRIDGETON Leslie Fogg
- ELMER Pole Tavern Equip. Sales Corp.
- FAIRFIELD Caldwell Tractor & Equipment

ROLLING ON...IN THE 90'S



MEETS THE CHALLENGE