

**Dewart Livestock**

DEWART, PA  
APRIL 1, 1996

**CATTLE 104... PDA** ...Compared with last week's sale...cows mostly weak 1.00 lower.

**STEERS:** couple Choice 1100 & 1200 lbs. 57.00 & 58.00, few Select 54.25-55.75.

**HOLSTEINS:** couple Choice 1300 lbs. 51.00, couple Select 49.25 & 49.50.

**HEIFERS:** one Choice 43.00.

**COWS:** Breaking Utility and Commercial 33.75-36.00, one 38.75, Cutter and Boning Utility 31.50-34.50, Canner and Low Cutter 24.25-25.25. Shells down to 16.50.

**BULLS:** few Yield Grade No. 2 1090/1900 lbs. 30.00-35.50.

**FEEDER CATTLE: STEERS:** few Large Frame No. 1 500/750 lbs. 33.00-50.00;

**HEIFERS:** few Medium Frame No. 1 300/650 lbs. 30.00-45.00.

**CALVES 80...VEALERS:** Standard and Good 75/105 lbs. 33.00-36.00, Utility 55/85 lbs. 20.00-33.00.

**FARM CALVES:** No. 1 Holstein bulls 90/125 lbs. 65.00-85.00, No. 2 85/110 lbs. 35.00-50.00; few No. 1 Holstein heifers 85/105 lbs. 97.50-132.50. Few beef cross bulls and heifers 70/100 lbs. 60.00-90.00.

**HOGS 30...BARROWS AND GILTS:** one lot US 1-2 240 lbs. 51.00, few US 1-3 260/275 lbs. 43.00-44.25.

**SOWS:** US 1-3 315/690 lbs. 30.00-35.00.

**BOARS:** few 25.25-26.25.

**FEEDER PIGS 51...US 1-3 20/40 lbs.** 14.00-28.00. --- per head.

**SHEEP 45...WOOLED LAMBS:** Choice 65/135 lbs. 50.00-77.50.

**NEW CROP LAMBS:** 20/65 lbs. 95.00-155.00.

**OK City Feeder Cattle**

OKLAHOMA CITY, OK  
APRIL 3, 1996

Compared to last Monday: Feeder steers over 800 lbs steady to 1.00 higher; feeder and stocker steers under 800 lbs steady to 2.00 lower. Feeder heifers over 700 lbs fully steady; lighter weight heifers 1.00-3.00 lower. Demand good for heavy weight feeders; moderate for other classes. Corn market continues to limit demand for lighter weight feeder cattle. The usual good demand for heavy weight stockers is absent due to the high wheat market which has limited normal graze-out wheat programs. Quality of supply average, modest end attractive and much improved from last week. Weigh conditions highly varied from gaunt to full. Feeder cattle flesh medium to slightly fleshy, few heavy fleshed. Cutter cows .50 lower. Utility cows steady to 1.50 higher. Slaughter bulls steady to 1.00 higher. Large supply of thin fleshed cows included in today's run. Total of 500 cows and bulls sold, with 80 percent to packers. The long dry winter throughout the eastern 2/3rds of the country has contributed to an oversupply of Cutter and Canner cows. These weak undermouthered older cows did not breed and are moving to market as producers find them open now that spring calving season is underway. Thus the inversion of cow beef prices where Canner and Cutter is below or even with boning Utility. Supply consisted of 74 percent yearlings over 600 lbs; 21 percent calves; 5 percent cows and bulls. Receipts this week 9,800; last week 10,220; last year 7,624. Prices follow with weighted average weight and price in parenthesis. Feeder Steers: Medium and Large 1 400-500 lbs (450 lbs) 60.50-66.00 (63.39); 500-600 lbs

(550 lbs) 60.00-64.75, few fleshy to 57.75 (61.76); 600-700 lb stockers (650 lbs) 57.00-62.50 (59.17); 700-750 lb stockers (719 lbs) 57.50-59.25 (58.22); 600-700 lb feeders (650 lbs) 54.00-57.75 (57.12); 700-800 lbs (750 lbs) 53.75-56.75 (55.51); 800-900 lbs (850 lbs) 52.50-56.50 (55.33); 900-1000 lbs (950 lbs) 52.50-55.50 (54.40). Holsteins: Large 2 600-700 lbs 31.75-32.75; 700-800 lbs 30.00-33.75; 800-850 lbs 34.00-35.50; pkg 1075 lbs 36.50. Feeder Heifers: Medium and Large 1 400-500 lbs (450 lbs) 49.75-53.25 (51.32); 500-600 lb stockers (550 lbs) 49.00-53.25 (50.93); 500-600 lb feeders (550 lbs) 46.00-49.25 (47.63); 600-700 lbs (650 lbs) 47.00-51.25 (49.97); 700-800 lbs (750 lbs) 50.00-52.50 (50.88); 800-850 lbs (818 lbs) 50.00-52.00 (51.31). Slaughter Cows: average dressing Cutters 29.50-31.50, Utility 30.00-33.00; high dressing Cutters 32.00-34.00, Utility 33.00-36.50, very high dressing up to 37.25; low dressing 27.00-30.00. Canner and low Cutter 24.00-27.00. Estimated dressed cost at Oklahoma National Stockyards: Cutter 64.55; Boning Utility 64.30; Breaking Utility 61.65; Canner 62.55. Bulls 75.25; Light weight bulls 72.15. Slaughter bulls: Yield Grade 1 1300-2050 lbs average dressing 40.00-43.00; high dressing 42.50-45.00, high dressing/high boning 46.00; low dressing 38.75-40.00.

**Carlisle Livestock Market**

Carlisle, Pa.

Tuesday, April 2, 1996

Report Supplied by Auction

**SLAUGHTER CATTLE: SLAUGHTER STEERS CHOICE 60.00-62.50; SELECT AND LOW CHOICE 54.00-59.75, COUPLE LIGHT DOWN TO 52.00.**

**HOLSTEINS CHOICE 50.00-54.25; SELECT 44.50-49.00; COMMERCIAL**

34.50-41.00.

**SLAUGHTER HEIFERS: CHOICE 56.00-61.00; SELECT 50.00-55.50; HOLSTEINS TO 45.00.**

**SLAUGHTER COWS: BREAKING UTILITY AND COMMERCIAL 34.00-36.00; CUTTER AND BONING UTILITY 30.00-35.50; CANNER AND LOW CUTTER 25.00-29.75; BIG MIDDLE 32.00-33.50; SHELLY 24.00 AND DOWN.**

**SLAUGHTER BULLS: YG#1 37.00-42.00; YG#2 32.75-36.25.**

**FEEDER CATTLE: FEEDER STEERS MEDIUM TO LARGE #1 200-375 LBS. 70.00-75.00 AND 400-850 LBS. 46.00-51.00, HOLSTEIN/DAIRY TYPES 35.00-50.00.**

**FEEDER HEIFERS: MEDIUM TO LARGE #1 200-375 LBS. 45.00-57.00 AND 400-850 LBS. 41.00-47.50.**

**FEEDER BULLS: HOLSTEIN/DAIRY TYPES 650-850 LBS. 37.00-44.00.**

**CALVES: VEALERS STANDARD AND GOOD 25.00-45.00; CALVES RETURNING TO FARM, ACTIVE. HOLSTEIN BULLS #1 90-125 LBS. 75.00-89.00, #2 90-135 LBS. 45.00-72.50, HOLSTEIN HEIFERS #1 TO 115.00.**

**SWINE: HOGS US#1&3 220-270 LBS. 49.00-49.50, 280-360 LBS. 38.00-48.00, 180-205 LBS. 39.00-44.25, 210-215 LBS. 45.00-46.25, SOWS US#1&3 300-600 LBS. 33.00-38.25, THIN/WEAK/ROUGH TO 32.00; BOARS, ALL WEIGHTS, 24.75-28.00; FEEDER PIGS BY THE HEAD, 15-25 LBS. 14.00-27.00; 30-50 LBS. 27.00-42.00.**

**GOATS: BY THE HEAD, FLESHY KIDS 35.00-62.50; SMALL KIDS 5.00-30.00; MEDIUM KIDS 55.00-67.50.**

**LAMBS: GOOD AND CHOICE 30-50 LBS. 120.00-152.50, 55-75 LBS. 117.50-142.50, 80-110 LBS. 107.50-135.00.**

**SHEEP: ALL WEIGHTS, 20.00-55.00.**

**SALE EVERY TUES. 5:55 P.M. FOR PRODUCE, RABBITS, POULTRY AND EGGS. 7 P.M. FOR LIVESTOCK.**

**NEXT STATE GRADED FEEDER PIG SALE FRIDAY, APRIL 12 AND 26. RECEIVING 7-11 A.M. SALE TIME 1:30 P.M.**

**NEXT SPECIAL FEEDER AND FED CATTLE SALE TUES., APRIL 16. SALE TIME WILL BE APPROX. 7:30 P.M. PEN LOTS OF CATTLE WILL BE SOLD IN ORDER RECEIVED.**

**EARLYBIRD PENS FOR FED CATTLE, COWS AND HOGS CLOSE EVERY TUES. AT 2 P.M. FOR PREMIUM PRICES, USE THESE PENS.**

**HATFIELD'S TOP PRICE FOR CASH HOGS WED., APRIL 3 WAS 49.50.**

**New Holland Dairy**

New Holland Sales Stables

Wednesday, April 3, 1996

Report supplied by auction

**DAIRY COWS 143, HEIFERS 290, 15 BULLS. MARKET STEADY.**

**LOCAL FRESH COWS 475.00-1100.00.**

**LOCAL SPRINGERS 650.00-1260.00. FRESH HEIFERS 600.00-1110.00.**

**UPSTATE LOADS FRESH 575.00-1300.00.**

**BETTER FRESH COWS 1210.00-1385.00.**

**HERD OF 40 HEAD ALL STAGES 325.00-1350.00.**

**SPRINGING HEIFERS LARGE 875.00-1110.00, SMALL 485.00-785.00.**

**SHORTBRED HEIFERS 350.00-985.00.**

**OPEN BREEDING AGE HEIFERS 585.00-685.00, SMALL OPEN HEIFERS 150.00-485.00.**

**BULLS 275.00-535.00, PUREBREDS 710.00-775.00.**

**ALL PURPOSE CART**

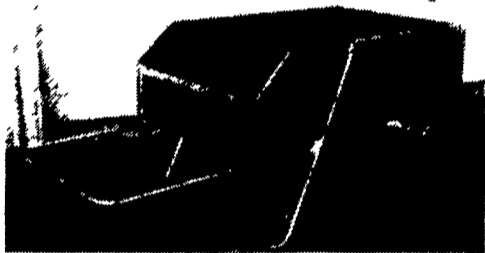


Photo Is 15 Cu. Ft. Size

- 15 Cu. Ft. Model—sembled with removable front & back, 26" pneumatic tires. **\$164.<sup>00</sup>**
- 8 Cu. Ft. Model—sembled with solid front & removable back, 20" pneumatic tires. **\$135.<sup>00</sup>**

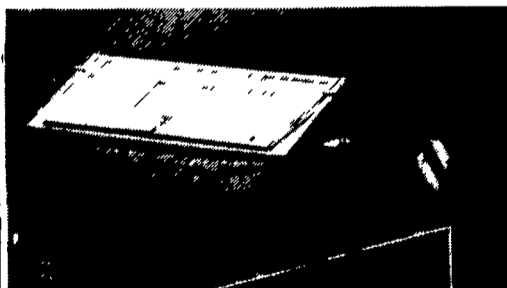
**Elam M. Ebersol**

558 Gibbons Road  
Bird-In-Hand, PA 17505  
Leave Message  
**717-661-9131**  
Dealer Inquiries Welcome



**ZETOR**

**RUR55 MANURE SPREADER**



This 5-Ton Manure Spreader gives you up to a 30 ft. spread cutting spreading time as much as 15%. This PTO driven machine is made to spread

- Chicken Manure
- Lime
- Semi-Liquid Manure

Call us for more information on those economical, time saving ZETOR Spreaders

**Northumberland Motors**

RD#1 Box 167A,  
Northumberland, PA 17857  
**717-473-9554**

**PRACTICE MAKES PERFECT.  
ZETOR INTRODUCES  
THE ULTIMATE POWER TOOL!**

Zetor's continuing commitment to engineering leadership, generation after generation, accomplishes the Ultimate Power Tool, the 103HP Model 10540.

The Zetor tractor, Model 25A introduced nearly 50 years ago, was the forerunner of all current Zetor models culminating in the Model 10540... the Ultimate Power Tool. The 10540 cuts time in the field and brings down the cost of big-time farming. And it's already being applauded in 93 countries throughout the world.

**ZETOR**

The world's first name for quality farm machines.

For your nearest dealer or information about available dealerships in your area, call Zetor's General Manager Marvin Brown at (717) 540-5618 or FAX (717) 540-5863

As shown the Zetor Model 10540 comes with a harvest of features. Suggested manufacturers retail price \$44,581.00 FOB List. Zetor's 50 year old Model 25A is not for sale at any price.

**VISIT THE ZETOR DEALER NEAREST YOU**

Ed Bartosek Agri Sales, West Springfield, PA  
Shuey's Sales & Svc., Ono, PA  
Wilhelm Equipment, Reynolds, PA  
Northumberland Motors, Northumberland, PA  
Dan's Repair, Honesdale, PA

Green Hill Farms, Cambridge Springs, PA  
Lincoln Supply & Equip., Somerset, PA  
George V. Seiple & Sons, Easton, PA  
Holtry's Welding/Repair, Roxbury, PA  
Kermit K. Kistler, Inc., Lynnport, PA