

(Continued from Page B12)

spouse has no interest in the other's hobbies, Sipe was blessed that Eleanor considered his tractor

interests as much hers as his. The greasy menagerie that would have sent some gals running the opposite way, merely added fire to her energies. She dug in to help

him remove the accumulated, filthy gunk, strip the paint and piece by piece, to completely dismantle them.

From there, she planted flowers

by the hundreds, so that a passerby saw nothing but a bauer of blossoms. It's one of the memories noted by Sipe's neighbors — the beautiful beds that Eleanor always loved to create.

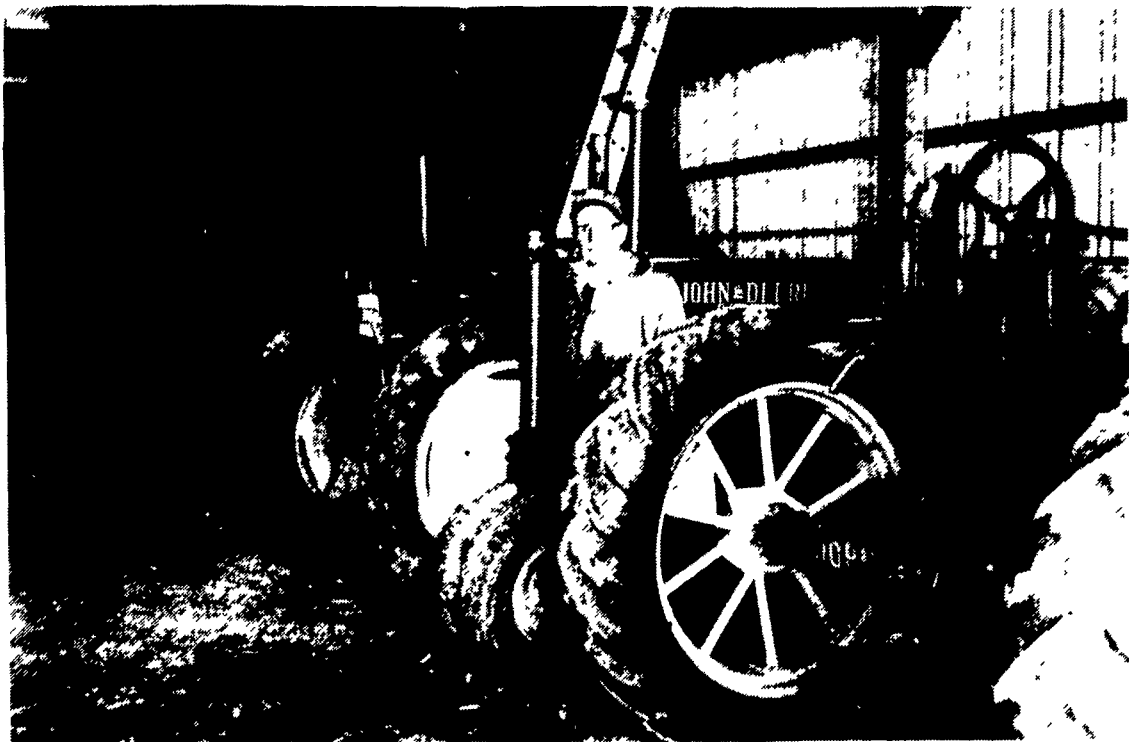
Now, his grand-nephew, Mark Sipe whose residence is his Uncle Ted's homeplace, spends companionable hours on end working and puttering with Sipe.

It's going to be different for Sipe without his collectibles and certainly, his contributions to the

famed New Centerville Farmers and Thresherman's Jubilee held a few miles down the road, will be sorely missed next September.

But then you look and see Sipe in his coveralls, in his element among the myriad bolts, belts, screwdrivers, wrenches, cans of WD-40, paints and more. It isn't quite believable.

Somewhere out there another basket case is waiting for Ted Sipe to find it. He will.

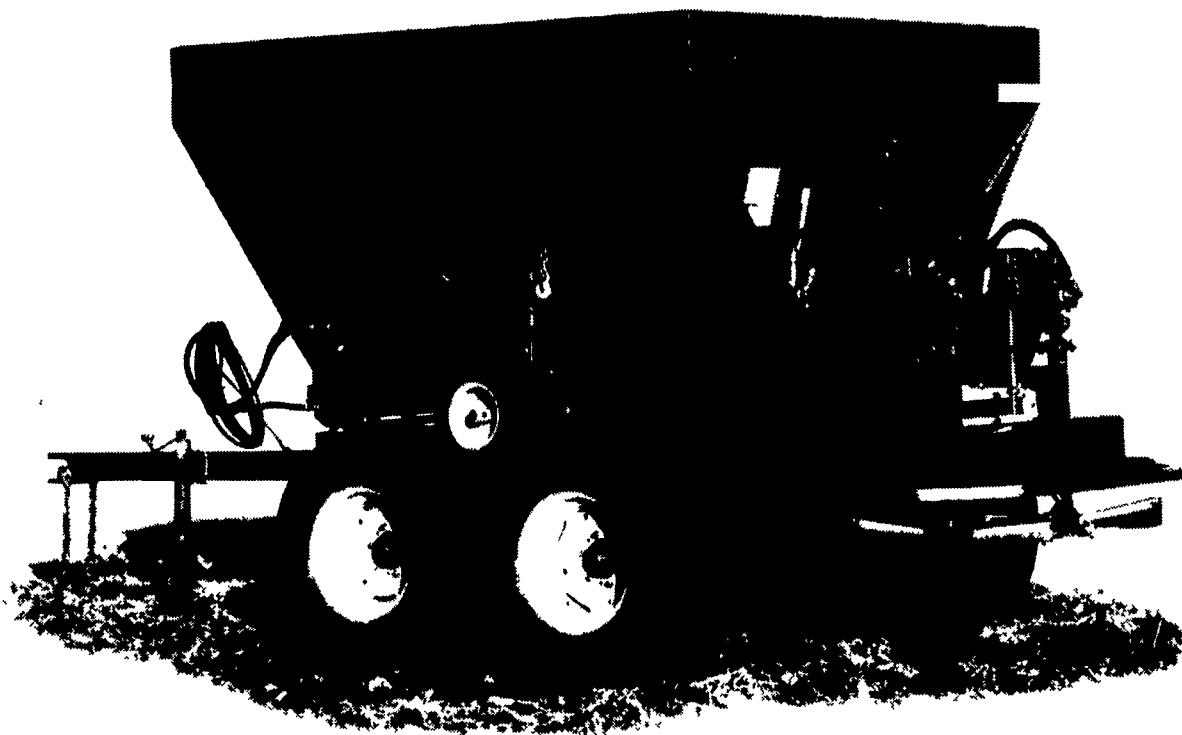


A fleet of John Deere tractors belonging to Ted Sipe won't stand in neat order in his pole barn once they are sold at auction on April 6, near New Centerville, Somerset County.



**HAY, STRAW,
PEANUT HULLS**
At farm or delivered in any quantity as you require.
**Esbenshade
Turkey Farm**
(America's Oldest Since 1858)
Paradise, Pa.
(717) 687-7631

The One Spreader Rugged Enough For Lime, Precise Enough For Fertilizer.



You know how tough it is to spread wet lime. And fertilizer is too expensive to waste. Our new 56i spreader does both jobs with ease. Plus, it has no equal when it comes to spreading "sloppy" material.

Stoltzfus Spreaders have been known as unique, "top-of-the-line" ag spreaders since 1947.

Farmers are still using Stoltzfus Spreaders they've had 20 years or more. That means your investment in a versatile Stoltzfus Spreader will add up to a very smart buy indeed.

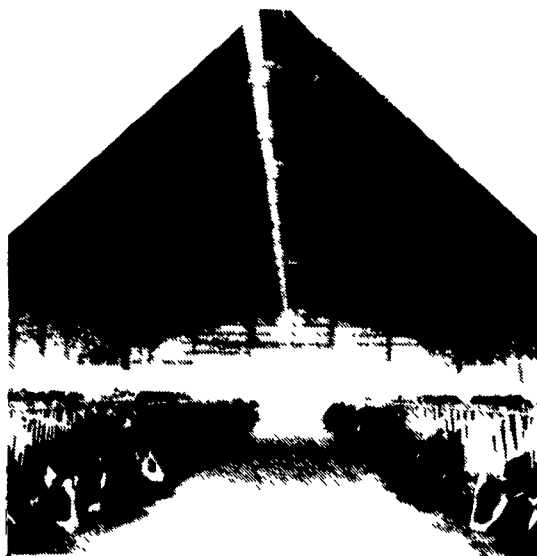
Call or write today for a free brochure and the name of the dealer nearest you.

- Press-wheel ground drive
- Walking-beam suspension
- Corrosion-proof steel hopper
- UHMW plastic floor
- Lime: 3 tons / acre max.
Fertilizer: 125 lbs. / acre min.



1-800-843-8731

Morgan Way, P.O. Box 527, Morgantown, PA 19543



AGRICULTURAL ENGINEERING CONSULTANTS

"CALL US TO DESIGN YOUR NEXT BUILDING PROJECT"

- FARMSTEAD PLANNING
- BUILDING DESIGN
- BLUEPRINT DRAFTING
- VENTILATION DESIGN
- DAIRY FACILITIES DESIGN

Timber Tech Engineering, Inc.
P.O. Box 145
256 West Franklin Street
Womelsdorf, PA 19567
PH: (610) 589-4589
FAX: (610) 589-5384

