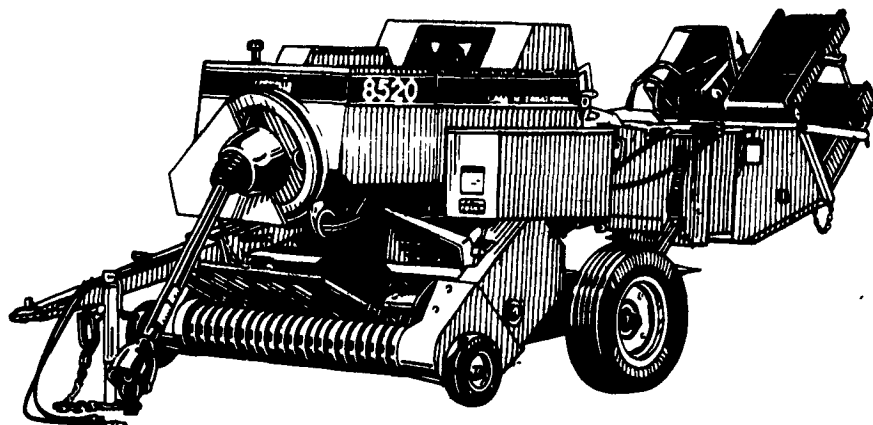
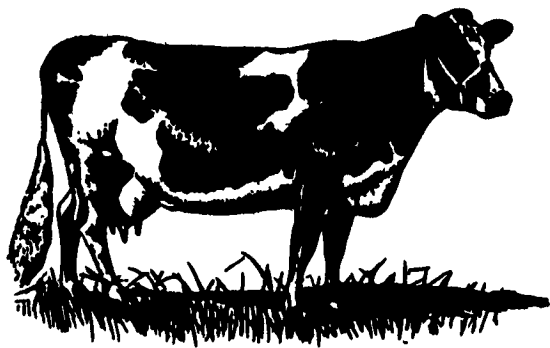


"Her" Choice



If Holsteins could talk, the conversation around the hay manger would be "Case IH Center Line Balers".

Why? More leaves per bale.

Our low profile pickup allows alfalfa hay to retain more dry leaves. We don't lift the windrow as high, saving leaves at the pickup. We also start to compress the hay before it enters the chamber to lock in leaves throughout the flake...leaves don't settle to the bottom and fall out the back of the baler to the degree of older style square balers.

More leaves means more milk, without increased overhead. Many studies show increased production of \$1,000 per year over a milking herd of 100 with 2% leaf savings!

Case IH Center Line Balers...one of the quickest ways to increase milk production without adding cows. Improve your bottom line with improved leaf savings.

See your local Case IH dealer today

BENDER IMPLEMENT

742 Edgewood Ave. Somerset, PA 15501

814-443-4611

Bender Implement Company is located at 742 South Edgewood Avenue in Somerset, still on the site where brothers Al and George Bender, in 1934, started the business.

Owner Phil Hammond says Bender Implement today offers customers a tractor product line up to 215 horsepower.

The massive red CASE IH cab tractors sitting on the lot will grab your attention, whether or not, you have something specific on your mind.

Phil categorizes Bender's implement line into four groups: tillage, planting, hay and forage, and material handling.

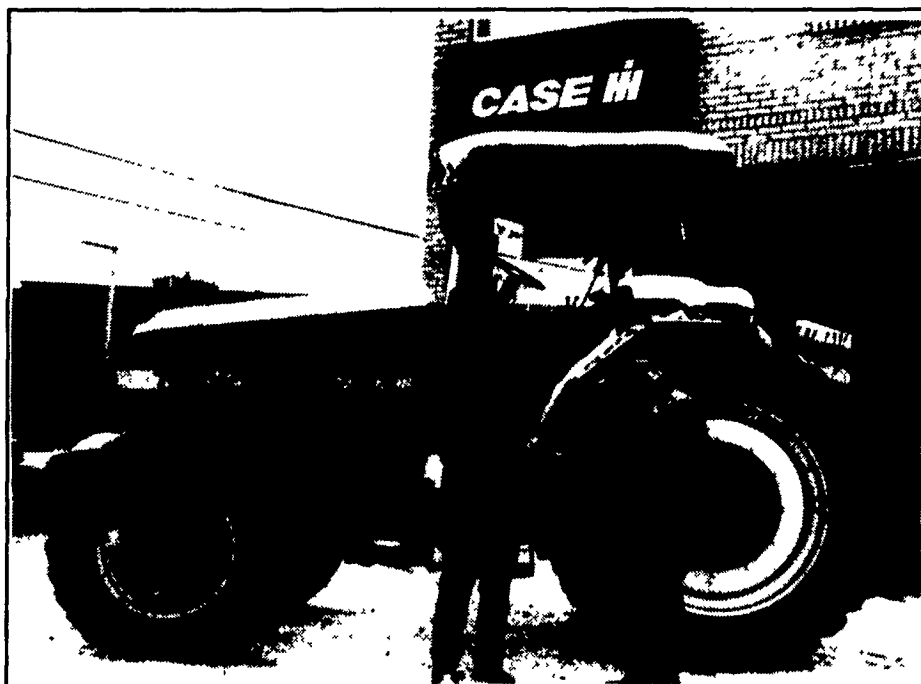
"We carry a good inventory," he says. "We provide new and used equipment, have parts and repair service, and will do repairs in the field or in the shop," he said.

The service area, besides Somerset, saturates some five counties, crossing into neighboring Maryland to serve customers living beyond the Mason-Dixon line.

Twelve employees fill positions in management, services sales, parts and clerical areas. The company operates with a fleet of four vehicles -- one delivery and three service trucks -- and daily uses United Parcel Service (UPS) for outbound mailings.

Bender Implement, as in the past, continues to carry its line of large household appliances. Only now, the brand name is no longer International Harvester as it was in former days.

"I used to milk cows," recalls Phil, "and I put the milk into an International cooler."



Gary Blocher, left, stands with his boss, Phil Hammond, owner of Bender Implement Company, in front of the CASE IH 7220 tractor.