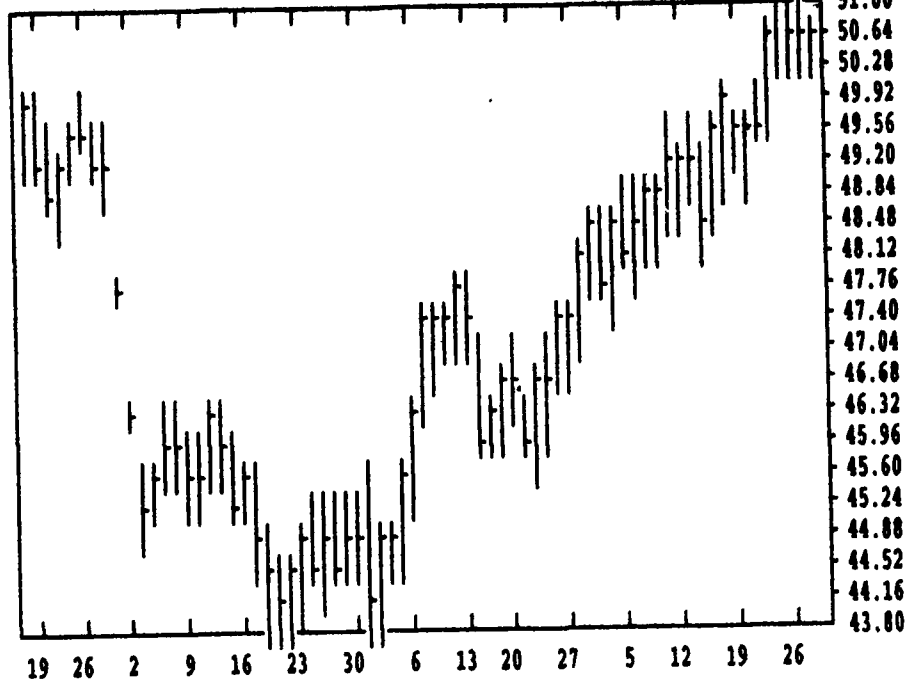
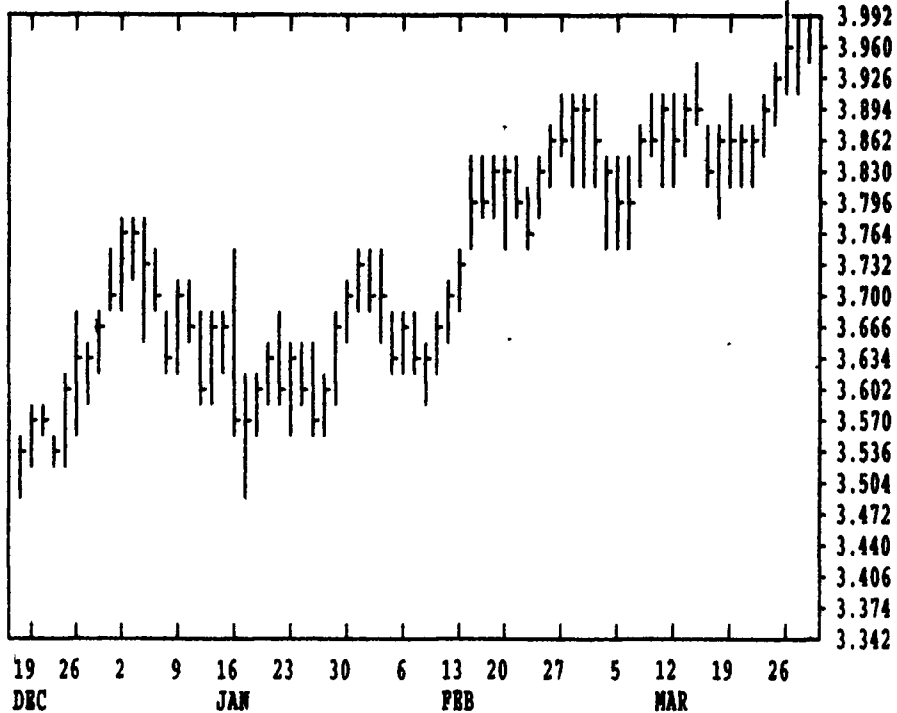


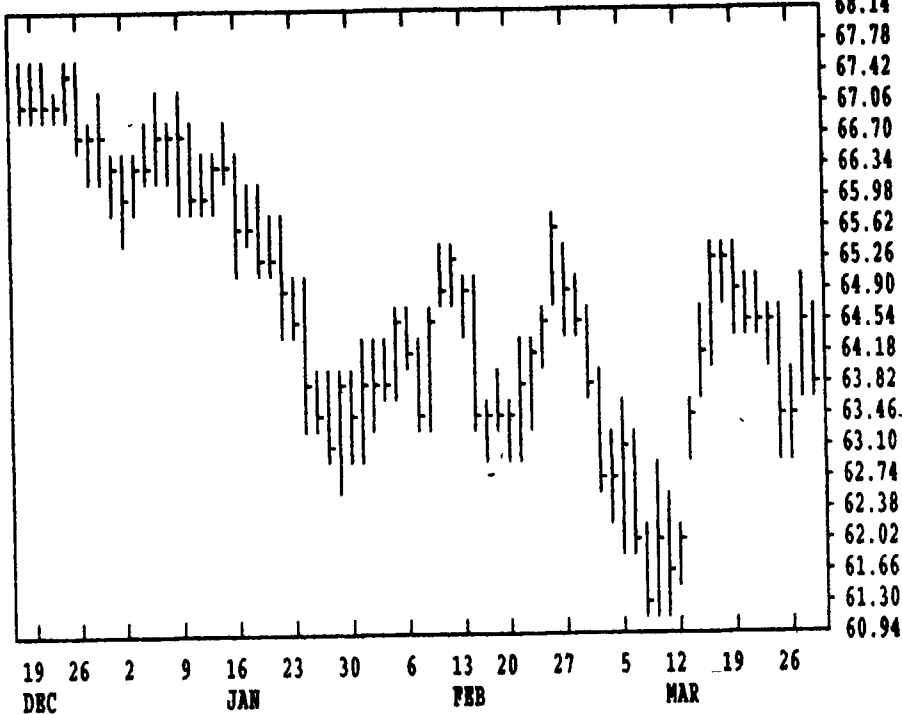
GRAIN, CATTLE AND HOG FUTURES MARKETS

(Closing bids: Thursday, March 28, 1996)

DTN GRAINS 18 CORN MAY 96 CONTRACT HIGH: 4.000 LOW: 2.594

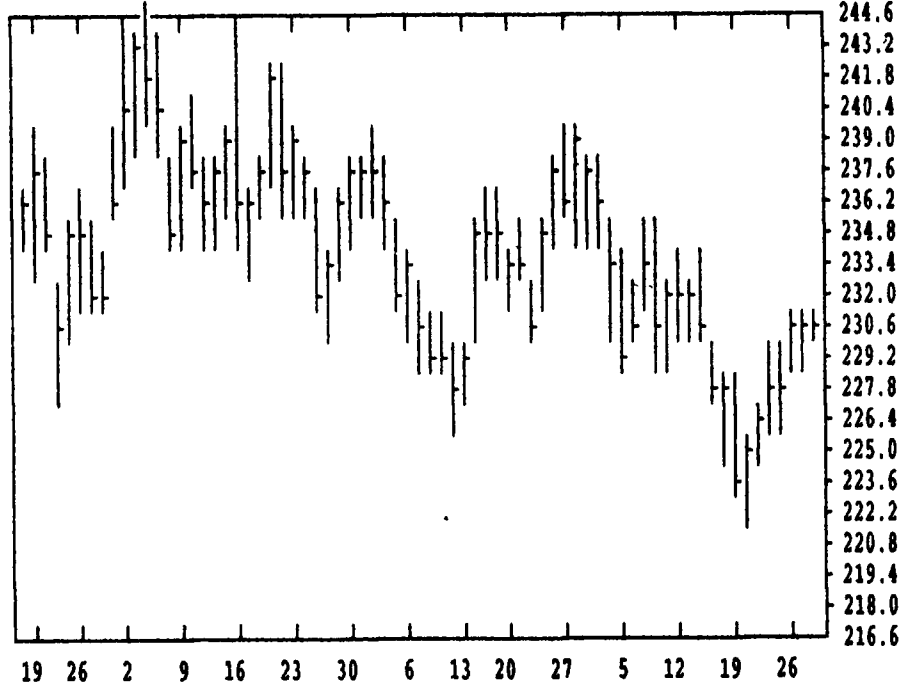


DTN LIVESTOCK 19 CATTLE, LIVE APR 96 CONTRACT HIGH: 68.45 LOW: 61.30

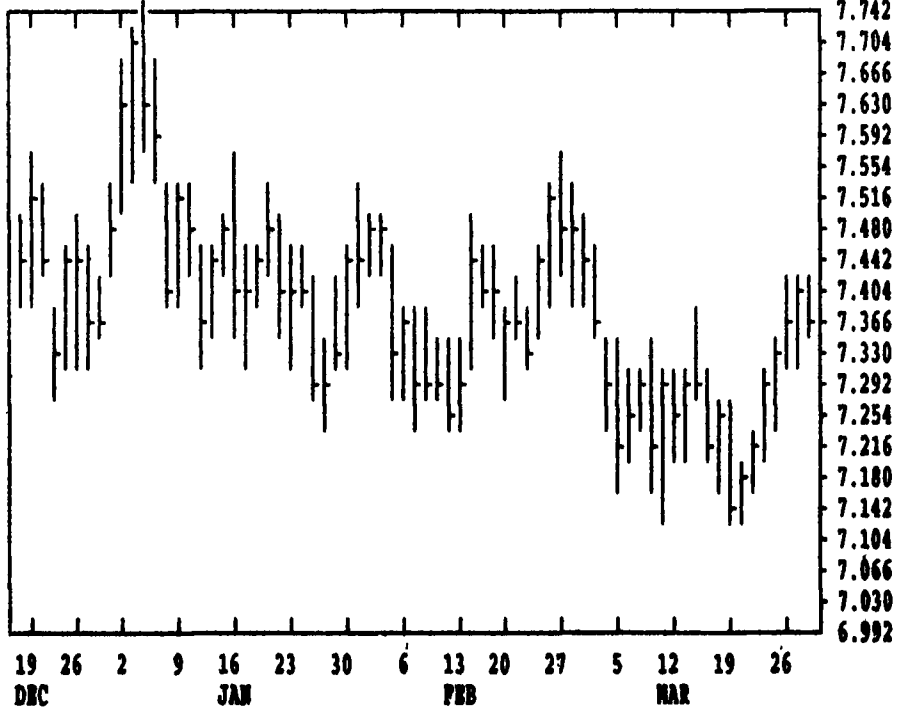


DTN FUTURES 14 03/28/96		TECHNICAL POINTS					SLOW STOCHASTIC					
PRICES ARE DECIMAL		MOVING AVERAGES			RSI'S		5 DAY 20 DAY					
CONTRACT	CLOSE	4-DAY	9-DAY	18-DAY	45-DAY	9DAY	14DAY	30DAY	%K	%D	%K	%D
WHEAT MAY	497.50	498.00	486.50	486.75	497.36	59.1	54.2	51.1	83	88	73	51
WHEAT JUL	467.00	466.06	454.97	454.04	454.03	64.2	60.5	57.9	89	93	74	50
KCWHT MAY	512.75	513.25	501.42	503.39	501.91	60.6	58.3	57.5	85	89	67	43
KCWHT JUL	496.50	494.69	481.64	482.53	477.64	65.8	62.2	59.9	89	91	72	46
MNWHT MAY	501.50	503.00	496.25	497.51	494.06	55.6	55.0	55.3	74	77	62	44
CORN MAY	399.25	397.19	391.64	388.93	380.91	75.2	69.7	65.4	92	92	91	75
CORN JUL	384.50	383.12	378.78	378.37	373.52	67.1	63.1	61.7	92	92	80	58
CORN DEC	315.75	315.87	314.33	315.04	315.48	52.8	51.3	50.0	77	79	67	57
OATS MAY	234.75	233.81	231.81	232.01	225.62	63.6	59.9	56.0	96	94	70	66
BEANS MAY	739.00	737.19	729.03	728.04	734.84	61.6	56.1	53.7	93	92	59	37
BEANS JUL	744.75	743.69	736.14	735.62	741.84	59.5	55.0	53.6	90	92	53	34
BEANS NOV	725.25	726.94	723.81	724.46	725.83	49.9	49.9	50.8	70	75	37	27
MEAL MAY	230.70	230.17	228.28	229.86	232.66	52.6	49.4	50.9	94	93	42	30
BNOIL MAY	25.19	25.21	24.84	24.46	24.52	70.1	64.6	55.0	78	84	90	80
CATTLE APR	63.95	63.94	64.43	63.68	63.91	49.0	49.3	47.2	49	36	67	70
CATTLE JUN	63.13	63.73	63.96	63.68	62.79	42.5	47.1	49.5	35	41	71	76
FCTL MAR	56.08	56.08	56.48	56.72	57.25	33.6	37.7	39.0	9	6	6	14
HOGS APR	50.68	50.82	50.35	49.63	47.78	67.7	66.5	59.1	75	84	93	94
HOGS JUN	54.93	55.19	54.69	54.06	52.71	60.9	61.2	57.1	60	72	83	89
PKBLS MAY	66.68	68.28	68.42	68.42	63.09	42.9	51.3	56.9	20	47	74	79

DTN GRAINS 25 SOYBEAN MEAL MAY 96 CONTRACT HIGH: 245.3 LOW: 181.5



DTN GRAINS 23 SOYBEANS MAY 96 CONTRACT HIGH: 7.750 LOW: 6.020



CORN				CHICAGO WHEAT				K.C. WHEAT						
	HIGH	LOW	LAST CHG		HIGH	LOW	LAST CHG		HIGH	LOW	LAST CHG			
MAY	3996	3980	3992*	0	MAY	4984	4952	4974*	-32	MAY	5154	5110	5126*	-42
JLY	3846	3832	3844*	-2	JLY	4680	4650	4670*	-26	JLY	4974	4942	4964*	-16
SEP	3324	3312	3320*	-6	SEP	4694	4670	4686*	-24	SEP	4920	4894	4920*	-14
DEC	3166	3152	3156*	-10	DEC	4800	4770	4794*	-24	DEC	4944	4914	4924*	-30
MAR	3214	3204	3206*	-6	MAR	4804	4780	4794*	-4	MAR	4954	4910	4900*	-20
MAY	3242	3232	3234*	-12										
JLY	3232	3224	3232*	-4										
SEP														
DEC	2896	2880	2884*	-14										
SOYBEANS				OATS				MINN WHEAT						
	HIGH	LOW	LAST CHG		HIGH	LOW	LAST CHG		HIGH	LOW	LAST CHG			
MAY	7396	7370	7390*	-10	MAY	2350	2320	2346*	+4	MAY	5032	5000	5014*	-36
JLY	7462	7430	7446*	-16	JLY	2352	2326	2350*	+4	JLY	4910	4876	4894*	-30
AUG	7450	7424	7442*	-16	JLY	2352	2326	2350*	+4	SEP	4734	4714	4730*	-30
SEP	7340	7310	7312*	-32	SEP	2006	1992	2004*	0	DEC	4810	4794	4794*	-36
NOV	7274	7250	7252*	-36	DEC	2030	2016	2026*	-2	MAR				
JAN	7330	7310	7314*	-24										
MAR	7370	7364	7370*	-20										
MAY	7414	7414	7414*	-24										
JLY	7442	7434	7430*	-22										
NOV	6902	6860	6864*	-36										

LIVE CATTLE				FEEDER CATTLE				LIVE HOGS						
	HIGH	LOW	LAST CHG		HIGH	LOW	LAST CHG		HIGH	LOW	LAST CHG			
APR	6480	6387	6395*	-65	APR	5732	5675	5677*	-20	APR	5080	5047	5067*	-10
JUN	6432	6310	6312*	-125	MAY	5822	5760	5765*	-30	JUN	5520	5487	5492*	-37
AUG	6305	6225	6237*	-60	AUG	5955	5910	5912*	-15	JLY	5290	5255	5280*	-2
OCT	6407	6350	6367*	-37	SEP	5955	5925	5925*	-20	AUG	4985	4955	4975*	-7
DEC	6340	6277	6295*	-35	OCT	5977	5945	5945*	-17	OCT	4540	4520	4530*	+10
FEB	6350	6310	6312*	-32	NOV	6070	6050	6050*	-10	DEC	4680	4655	4672*	+2
APR	6475	6465	6465*	0	JAN	6100	6077	6077*	-17	FEB	6500	6475	6482*	-17
JUN					MAR					APR	6325	6320	6322*	-7
SWISS FRANC				CANADIAN DOLLAR				PORK BELLIES						
	HIGH	LOW	LAST CHG		HIGH	LOW	LAST CHG		HIGH	LOW	LAST CHG			
JUN	8487	8437	8476*	+59	JUN	7348	7333	7334*	-1	MAY	6805	6655	6667*	-125
SEP	8560	8516	8552*	+60	SEP	7347	7336	7335*	-1	JLY	6680	6565	6577*	-85
DEC	8630	8620	8628*	+61	DEC	7345	7336	7335*	-1	AUG	6390	6305	6310*	-52