

Best Buys in Used Equipment

USED TRACTORS

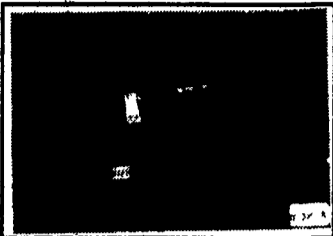
UNDER 80 HP



SOLD
CIH 588 Tractor w/2250 Loader, 1993 Yr., 1360 Hrs., New 18.4x30 Tires For/Rev Block Heater (W1014)



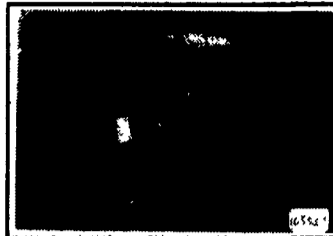
CIH 885 2WD Tractor, Cab w/AC, Heat, 1987 Yr., Deluxe Seat, Power Shift, 18.4x30 Tires, 2 Hyd. Valves w/2255 Loader w/84" Bucket (W9807)



IH 656 Tractor, 1967 Yr., 5428 Hrs., 3 Pt. Hitch, 2 Valves (W9823)



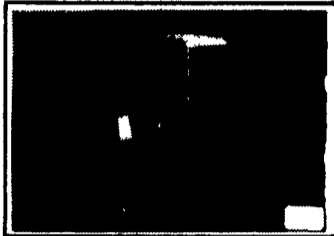
IH 1066 Tractor 1972 Yr., 6600 Hrs., 3 Pt. Hitch (9307)



IH 186 Hydro Tractor, 1976 Yr., 1900 Hrs. (W9953)

80 TO 130 HP

130 TO 200 HP



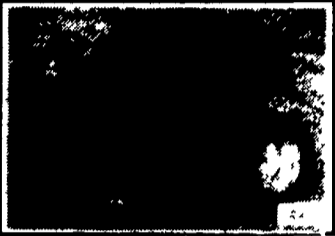
IH 1086 Tractor 1976 Yr., 20.8-38, 2 Hyd. Valves, 540/1000 PTO, Cab w/AC, Heat, Radio (W9190)



SOLD
Case 3150 Tractor, 1985 Yr., 3366 Hrs. (8904)



SOLD
IH 1086 Tractor, Reman. Engine, New TA (W9801)



IH 5488 Tractor, 1982 Yr. 20.8x38 w/Duals, 5340 Hrs. w/Rebuilt Eng. (W9229)



CIH 7140 MFD Tractor, 1991 Yr., 1025 Hrs. 3 Hyd. Valves, 18 Wts. 20.8x42 Tires 75%, 20.8x42 Duals, 1000 PTO, Warr to 5-96 (W9740)

OVER 200 HP



CIH 7120 MFD Tractor, 1991 Yr., 1260 Hrs., 18.4x42 Tires Rear, 14.9x30 Tires Front, 4 Valves, 3 Pt. Hitch, 18 Wts. AM/FM Radio (W9742)



SOLD
JD 7800 MFD Tractor, 1995 Yr. 220 Hrs., 18.4x38 Tires, 14.9x30 Ft. Tires, 3 Hyd. Valves, Speed Trans, 540/1000 PTO, 3 Pt. Hitch, AM/FM Radio (W9980)



SOLD
CIH 9270 Tractor, 1987 Yr., 1857 Hrs., 20.8x42 Tires, Duals, 4 Valves (7824)

IH 1086 Tractor, 4988 Hrs., 20.8x38 Tires, 2 Hyd. Valves, Cab w/Heat & AC, 3 pt., 540/1000 RPM, T/A, w/2350 Loader (W1157)
 IH 1486 Tractor, 3319 Hrs., 20.8x38 Tires, WFE, 540/1000 RPM, Cab w/Air-Heat (W9626)
 IH 1566 Tractor, 161 HP, 20.8x38 Tires, 3PT., Cab. 2 Hyd. Valves (W8757)
 IH 1566 Tractor, 1976 Yr., 4591 Hrs., 20.8x38 Tires, WFE, 1000 RPM, 3 Pt. (W9045)
 IH 986 Tractor, 3800 Hrs., 18.4x38 Rear, 3 Sets of Rear Wts. (W9335)
 IH 3588 2+2 4WD Tractor, 5100 Hrs., 18.4x38-DT 710 (W9968)
 IH 1466 Tractor, 1971 Yr., 4575 Hrs., 20.8x38 Tires, 2 Hyd. Valves, Diesel, PTO; wide FE, T/A (W1265)
 CIH 7130 MFD Tractor, 1988 Yr., 2900 Hrs., 18.4x38 Duals, 4 Valves, Radar, 2 Speed Rev. (W1204)
 CIH 5240 2WD Tractor, 1994 Yr., 700 Hrs., 18.4x38 Tires, Cab, Powershift, Digital Tach, 3 pt. Hitch Control, Air Seat, Flange Axle (W1220)
 Case 1370 Tractor (W8947)
 AC 180 Tractor, Cab, Diesel (W1251)
 Hesston 60-66 2WD, WFE, 540 PTO, 3 Cyl., 16.9x30 Rear Tires, Canopy (W8350)
 Steiger FT225 Tractor, 1977 Yr., 4434 Hrs., 30.5L-32 Tires, 3 Hyd. Valves, Heat/AC, 3 Pt., Quick Hitch (W9975)

USED COMBINES

IH 1460 Combine, 1979 Yr, 4500 Hrs. (U1160)
 IH 1440 Combine, 1979 Yr. 5875 Hrs., 28Lx26 Tires FT, 18.4x16.1 Tires RR, AHC AM/FM (U9518)
 IH 1440 Combine, 1979 Yr. (U9712)
 IH 1460 Combine, 1979 Yr., 7036 Hrs., Speciality Rotar, AHHC, Feeder Cut Off, AM/FM Radio (U9036)
 IH 1440 Combine, Mechanics Special, As Is (U9141)
 IH 1440 Combine, 1978, 3400 Hrs (U9942)
 IH 1480 Combines, 1985, 5000 Hrs, Spec. Rotor (U1001)
 IH 1460 Combine, 1981 Yr., 3250 Hrs. (U1135)
 CIH 1660 Combine, 1987 Yr., 2679 Hrs., Field Tracker, 30.5x32 Tires, 3rd Cyl, Feeder-Reverser, Spec. Rotor, Hyd. Reel Fore & Aft, Rock Trap, Reel to Ground, AHC (U1260)
 CIH 1660 Combine, 1990 Yr., 1800 Hrs (U1159)
 CIH 1660 Combine, 1991 Yr., 1640 Hrs., 24.5x32 Tires, Radio, Fld. Trkr., Spec. Rotor, Rock Trap, AHC, Reel to Ground, Feeder-Rev. (U1071)
 CIH 1680 Combine, 1989 Yr, 30.5x32 Hrs., Spec Rotor, Rock Trap, AHHC, Monitor, Fore & Aft Reel, Radio (U1076)
 CIH 1680 Combine, 1981 Yr, 1684 Hrs., Specialty Rotor, Rock Trap, Feeder Rev. Monitor, AHC, Reel To Ground Fore/Aft, 2 Speed Hydro 4WD (U9617)
 CIH 1680 Combine, 1987 Yr., 4700 Hrs., 30.5x32 Tires FT, 18.4x16.1 Tires RR, Feeder Rev Monitor, AHC, Reel to Gr., Hyd. For/Aft, AM/FM (U9060)
 CIH 1688 Combine, 1993 Yr., 1011 Hrs., 30.5x32 Tires, Deluxe Seat, 2 Spd. Hydro, 3 Rd. Cyl. Field Tracker, Specialty Rotor, Feeder Rev & Cut Off, Hyd. Reel For/Aft, Rock Trap, AHHC (U9924)
 CIH 1660 Combine, 1986, 2WD, 24.5x32 Tires, Chaff Sprdr., 3 rd Cyl., Feeder-Reverser, Spec. Rotor, Monitor, Rock Trap, AHC (U9879)
 CIH 1688 Combine, 1990 Yr., 1900 Hrs., Long Sieve, Rock Trap (U1219)
 JD 7700 Combined, 1977 Yr., 4000 Hrs., Hydro, 23.1x26 Tires, AC/Heat (U9639)
 JD 6600 Combine, 1976 Yr., Hydro (U9922)
 JD 7720 Combine, 2WD, 1980, 2700 Hrs. 24.5x32 Tires, Heat/AC, w/2 platforms (U9841)
 JD 7720 Combine, 1982, 2440 Hrs., Feeder-

Reverser, Rock Trap, AHC (U1039)
 JD 6600 Combine 1977, 3041 Hrs., Sidehill, 23.1x26 Tires (U9764)
 IH 915 Combine, 1977 Yr., 3500 Hrs. (10039)
 IH 915 Combine, 1977 Yr., 3700 Hrs., AHC (U9760)
 AC L2 Combine, 1978, Hydro, Chopper, Monitor, Rock Trap, Ahc, Cab W/Heat (U1043)
 Gleaner M3 Combine, 1984 Yr., 2000 Hrs., AM/FM Radio, AHHC (U9914)
 MF 550 Combine 4R Wide Cornhead, 13' Platform (U9184)
 MF 5'10 Combine, w/13' PF Price \$3,500 (U9898)
 MF 510 Combine, 1969, Diesel Eng. w/4RN (U9126)

USED TILLAGE

DISCS

JD 235 Disc, 21", 9" Spacing (T1027)
 JD 235 - 18" Disc, Duracushion, 21 1/2" Blades, Packer Hitch & Hoses (T1191)
 Krause 4921 Disc, Blades Front 21", Rear 18" (T1239)
 Krause 1577 Disc, 18' Rockflex, 20" Blades (T1224)
 Krause 4926 Disc, 24', 9 1/2" Spacing, Rockflex, Cyl/Hoses, Scrapers, Blades: Front-17" Rear-18" (T1232)
 Krause 2242 Disc (T1164)
 Krause 2410 Disc (T1111)
 Krause 2416 Disc, 26' (T5858)
 Krause 4912 Disc, 18' (T9138)
 Krause 4927 Disc, 25' Rockflex (T9456)
 Krause 4927 Disc 25' (T9598)
 Krause 2413 Rockflex Disc, 23' Cut Width, H.D. Cutting Disc, 10" Blade (T9552)
 Krause 1497 Offset Disc, 12' Cut, Standard Gangs, Dual Tires, 9" Spacing, New Blades (T9983)
 Krause 2413 Disc Rockflex, 23' Cut, 24" Blades, Rebuilt & Painted (T9817)
 Sunflower 1232 Disc Rockflex, 24' Cut, Wing Duals, Wing Gauge Wheels, Like New (T9730)
 NH TD200-12' Disc, Double Tandem Disc, 12.5Lx15 Duals, Heavy Duty, Double Offset, Hyd. Leveling, 9 1/2" Spacing (T1207)

FIELD CULTIVATORS

Krause 4133 Field Cultivator, K-Tines (T6863)
 White Field Cult. 24' Wide, w/Buster Bar, Hyd. Fold (T8614)

AC 17' Field Cultivator, 6" Spacing, Cyl/Hoses, Spring Teeth, 7.50x15 Singles (T1269)
 JD 875 Cultivator, 6 Row Narrow, (2) Rolling Guides, Depth Wheels, Rolling Shields, Parallel Linkage Units (T1194)

OTHER

IH 735 4 Bottom Plow, Cyl/Hoses, Vari-Width (T9800)
 IH 720 Plow 5-16" w/Coulters (T9527)
 IH 720 Plow, 5-18" w/Dtl. Hitch (T8769)
 JD 2800 Plow, 6 Bottom w/New Coulters, Auto Reset, Variable Width, On Land Hitch (T1234)
 JD 4 Bottom Plow, Hyd. Reset Coulters (10893)
 Krause 3124 Landsman, rear spikes, one-pc. K-Tine (T1182)
 IH #11 Subsoiler, 7 Sk. Coulters, Gauge Wheels (T9226)
 Brillion 14' Packer, 18" Wheels, Cyl. & Hoses (T1249)
 Brillion 23' Packer, Duals, 18" Smooth Rolls, Scrapers (T1206)
 Brillion 21' Packer, X-Fold (T1233)
 Farm Hand 18' Packer, 18" Roller, Dual Wheels, VG Cond. (T9714)
 IH 2 Shank Ripper, 3 Pt. Ripper (T9607)

USED HAY & FORAGE

BALERS

NH 273 Baler, Super Sweep Pickup, Wisconsin Engine, Steel Wheels (U9967)
 CIH 8580 Big Baler 4x4x8 Bales, 1993 Yr. (9938)
 Hesston 4800 Baler, Bale Size 4x4x8 (U9553)
 NH 2000 Big Baler, 3x4, Exc. Cond. (U1221)
 NH 268 Baler Steel Wheels, Less Engine, Super Sweep Pickup (U9977)
 NH 311 Baler & Thrower (U1081 & 82)
 JD 336 Baler (U9859)

MOWER CONDITIONERS

CIH 8830 Mower Cond., 1994 Yr., 717 Hrs., 12' Head (F8718)
 CIH 8830 Mower Cond., 1994 Yr., 813 Hrs., 12' Head (F8721)
 IH 1490 Mower Conditioner, 12' Cut, Ticor Rolls, Hydro-Swing Hitch (U9857)
 Vicon KM321 Disc Mower Cond. 10 1/2' Cut (U9731)
 NH 479 Haybine, 9' Cut (U9955)

MOWERS

Rhino SR Batwing Mower, 15' Cut, 6 Laminated Tires, Hyd. Lift & Fold, 540 PTO (U9826)
 New Schulte 5026 Mower 26' Cut (S9533)
 JD 1508 Batwing Mower, 15' Cut, 1000 PTO, New Paint (W8509)
 New Rhino SR20 Mower Chain Guards Front & Rear (S7522)
 Woods 120 mower, 10' offset (U6970)

OTHER

Bush Hog 20' Batwing 1000 PTO, Laminated Tires, Stump Jumper (V9289)
 IH 600 Blower, Reconditioned (U8214)
 CIH 8830 Windrower w/12' Auger Header (U9799)
 NH 28 Blower (U1137)

USED DRILLS & PLANTERS

PLANTERS

NI Planter 11 Row Corn/Bean w/Liq. Fert., 2-100 Gal. Tanks, Demco Pump (V9608)

GRAIN DRILLS

GP 15' 3 Pt. Drill, 26x7, 13" DD Openers, 4" Press Wheels, 700 AC Use (V8486)
 GP 15' Drill, 3 Pt. Hitch, 26x7 DD Openers (V9436)
 GP 30' Drill (V8224)
 Great Plains 14' Drill, No-Till, 7" Spacing w/Wt. Brackets, No-Till Hitch (V7978)
 GP 14' NT Drill w/CP Hitch (V8362)
 Haybuster 1206 NT Drill 11.5' Wide, 6" Spacing, 12" Blades, Cast Press Wheels, Hyd. Cyl & Hose (V9409)
 CIH 5100 Drill, 24x6, Soybean Special, w/Press Wheels, Cyl./Hoses (V1193)
 IH 510 Drill, 21x7, Mechanics Special w/Press Wheels (V1236)
 IH 510 Drill, 16x7 Grass Seed Fert. Attachment (V9812)
 IH 5100 21x7 Drill, 7" Spacing w/Fert. (V9748)
 Krause 5213 Drill (V1169)
 Krause 5213 NT Drill 7.3" Spacing, 953 Ac, DD Openers 13" NT Couplers 14" 4" PW, Sm. Seed Attach (V9641)

All New & Used Products
 Backed By
 Hooper Parts & Service
(717)768-8231

