

Eighty Four Livestock

EIGHTY FOUR, PA
MARCH 18, 1996

CATTLE 198... PDA ..Compared with last week's sale...heifers and bulls steady, cows steady to 3.00 lower.

STEERS: Select 45.00-50.00, Standard 37.50-45.50.

HEIFERS: Standard 32.00-39.50.

COWS: Breaking Utility and Commercial 30.00-33.00, one 38.00, Cutter and Boning Utility 28.00-31.00, Canner and Low Cutter 24.00-28.75. Shells down to 20.00.

BULLS: Yield Grade No. 1 1000/1680 lbs. 42.50-50.00, No. 2 1550/2100 lbs. 36.50-40.25.

FEEDER CATTLE: STEERS: Medium and Large Frame No. 1 350/900 lbs. 47.00-54.00, Medium and Large Frame No. 2 300/900 lbs. 28.50-46.00; HEIFERS: Medium and Large Frame No. 1 300/650 lbs. 43.00-51.00, Medium and Large Frame No. 2 275/600 lbs. 28.00-44.00; BULLS: Medium and Large Frame No. 1 265/500 lbs. 45.00-52.50, Medium and Large Frame No. 2 255/750 lbs. 36.00-45.00.

CALVES 124...VEALERS: Choice 155/190 lbs. 70.00-100.00, Good 125/170 lbs. 30.00-65.00, Standard and Good 95/115 lbs. 30.00-37.00, 60/80 lbs. 26.00-32.00, Utility 55/70 lbs. 15.00-23.00.

FARM CALVES: No. 1 Holstein bulls 90/120 lbs. 52.50-77.50, No. 2 80/110 lbs. 35.00-60.00; No. 2 Holstein heifers 85/110 lbs. 75.00-115.00, No. 2 70/120 lbs. 37.50-70.00. Beef cross bulls and heifers 65/120 lbs. 41.00-85.00.

HOGS 88...Barrows and gilts steady to 2.00 higher.

BARROWS AND GILTS: US 1-3 220/250 lbs. 46.25-49.00, US 2-3 260/300

lbs. 42.25-48.50.

SOWS: US 1-3 375/475 lbs. 28.00-37.50, 525/650 lbs. 34.00-37.85.

BOARS: 275/635 lbs. 23.00-26.25.

FEEDER PIGS 6...Few US 1-3 40/90 lbs. 15.00-35.00. --- per head.

SHEEP 149...Slaughter lambs steady to 10.00 higher.

SLAUGHTER LAMBS: Choice 80/100 lbs. 97.00-109.00, 50/75 lbs. 107.00-122.00, Good and Choice 80/110 lbs. 85.00-93.00.

FEEDER LAMBS: Good and Choice 45/75 lbs. 69.00-89.00.

NEW CROP LAMBS: Choice 30/40 lbs. 122.00-139.00.

SLAUGHTER SHEEP: 25.00-45.00.

GOATS 20...Large 51.00-61.00, Medium 38.00-54.00, Small 25.00-35.00. --- per head.

Middleburg Livestock

MIDDLEBURG, PA
MARCH 19, 1996

CATTLE 445... PDA ..Compared with last week's sale...steers uneven, mostly strong 1.50 higher, cows .25 to 1.50 higher.

STEERS: few High Choice and Prime 1200/1480 lbs. 61.75-63.50, Choice 1050/1480 lbs. 57.00-62.50, Select 52.50-57.00, few Standard 42.00-50.00.

HOLSTEINS: Choice 1150/1640 lbs. 51.25-55.25, one 57.25, Select 49.50-51.75, few Standard 40.00-42.00.

HEIFERS: Choice 1040/1440 lbs. 56.00-60.75, one 67.00, few Select 49.50-55.50, few Choice Holsteins 52.75-54.25.

COWS: Breaking Utility and Commercial 34.75-39.00, few 40.75, Cutter and Boning Utility 32.75-35.75, few 37.00, Canner and Low Cutter 28.00-33.25, few down to 25.00. Shells down to 21.00.

BULLOCKS: few Select 1130/1280 lbs. 47.00-51.00.

BULLS: few Yield Grade No. 1 1320/1935 lbs. 39.75-44.50, one No. 2 2000 lbs. 35.00.

FEEDER CATTLE: STEERS: Large Frame No. 2 350/830 lbs. 31.00-38.00; HEIFERS: few Medium and Large Frame No. 1 425/850 lbs. 37.00-46.00, one 58.00; STEERS AND BULLS: Medium Frame No. 1 450/800 lbs. 41.00-51.00.

CALVES 219...VEALERS: Standard and Good 75/105 lbs. 36.00-41.00, Utility 55/85 lbs. 23.00-35.00.

FARM CALVES: No. 1 Holstein bulls 90/130 lbs. 68.00-87.00, couple 90.00, No. 2 85/110 lbs. 40.00-60.00; No. 1 Holstein heifers 85/115 lbs. 92.00-134.00, No. 2 70/100 lbs. 37.00-70.00. Beef cross bulls and heifers 75/115 lbs. 38.00-65.00.

HOGS 603...(03/18 & 19/96)..Bulk of supply sold on Monday and reported by the auction. Barrows and gilts 2.00 lower.

BARROWS AND GILTS: US 1-2 220/260 lbs. 48.75-50.00, US 1-3 225/270 lbs. 47.00-49.00, lot US 1-3 185 lbs. 40.75.

SOWS: US 1-3 350/600 lbs. 30.25-36.25.

BOARS: 26.25-29.00.

FEEDER PIGS 45...Lot US 1-3 30 lbs. 26.00. --- per head.

SHEEP 63...SLAUGHTER LAMBS: Choice 80/135 lbs. 74.00-96.00.

NEW CROP LAMBS: Choice 25/65 lbs. 117.00-147.00.

SLAUGHTER SHEEP: few 20.00-39.00.

GOATS 10...Few Large 25.00-40.00, few Large Kids 44.00-47.00. --- per head.

New Wilmington Livestock

NEW WILMINGTON, PA
MARCH 18, 1996

CATTLE 183... PDA ..Compared with

last week's sale...cows steady to 1.50 higher.

STEERS: one Select 58.50, few Standard 47.75-54.50.

HOLSTEINS: one Select 49.00.

HEIFERS: few Select 50.50-55.25.

COWS: Breaking Utility and Commercial 33.00-36.50, one 37.75, Cutter and Boning Utility 27.75-34.25, Canner and Low Cutter 25.00-28.50. Shells down to 17.50.

BULLS: few Yield Grade No. 2 1150/2225 lbs. 37.00-39.00.

FEEDER CATTLE: STEERS: few Medium Frame No. 1 275/475 lbs. 48.00-50.00;

HEIFERS: Medium Frame No. 1 300/775 lbs. 39.00-45.00, few Large Frame No. 2 375/625 lbs. 40.00-46.50, Medium Frame No. 2 350/475 lbs. 31.00-39.00; BULLS: few Large Frame No. 1 675/900 lbs. 40.00-48.00, few Medium Frame No. 1 400/525 lbs. 42.00-46.50, few Large Frame No. 2 300/875 lbs. 37.00-39.00.

CALVES 137...VEALERS: Standard and Good 80/120 lbs. 25.00-37.00, Utility 55/80 lbs. 10.00-20.00.

FARM CALVES: No. 1 Holstein bulls 90/135 lbs. 59.00-69.00, 80/85 lbs. 47.00, No. 2 85/120 lbs. 39.00-59.00; one No. 1 Holstein heifer 105 lbs. 130.00, No. 2 75/125 lbs. 40.00-113.00. Few beef cross bulls and heifers 50/95 lbs. 40.00-87.50.

HOGS 294...Barrows and gilts .25 higher.

BARROWS AND GILTS: US 1-2 220/270 lbs. 49.85-52.10, US 1-3 220/270 lbs. 47.85-49.50, US 2-3 210/260 lbs. 47.85-48.00.

SOWS: US 1-3 325/625 lbs. 35.00-37.50.

BOARS: few 275/500 lbs. 30.00-31.00.

FEEDER PIGS 16...NO MARKET

TEST!

SHEEP 206...SLAUGHTER LAMBS: Choice 50/100 lbs. 70.00-92.50.

NEW CROP LAMBS: Choice 55/100 lbs. 95.00-105.00, Good and Choice 25/50 lbs. 95.00-119.00, 50/85 lbs. 83.00-92.50.

SLAUGHTER SHEEP: 21.00-40.00 mostly 25.00-35.00, Yearlings 45.00-66.00.

GOATS 11...Couple Large 45.00 & 46.00, few Large Kids 25.00-38.00, few Small Kids 18.00-22.50. --- per head.

Morrison Cove Livestock

Martinsburg, Pa.
March 18, 1996

Report supplied by auction

CATTLE 207. STEERS CHOICE 61.00-63.50; GOOD 57.50-60.50.

HEIFERS: CHOICE 58.50-61.50; GOOD 53.50-58.50.

COWS: UTILITY & COMMERCIAL 32.00-39.50; CANNER & LOW CUTTER 26.00-32.00.

BULLOCKS: 45.00-55.00.

BULLS: YIELD GRADE NO. 1 36.50-46.00.

FEEDER CATTLE: STEERS 42.00-47.00; BULLS 32.00-40.00; HEIFERS 30.00-40.00.

CALVES 135. PRIME, NO MKT. TEST; CHOICE 75.00-85.00; GOOD 60.00-70.00; STANDARD 25.00-40.00; HOLSTEIN BULLS 90-130 LBS. 40.00-75.00; HOLSTEIN HEIFERS 90-130 LBS. 80.00-110.00.

HOGS: 366. US NO. 1-2 48.50-49.25; US NO. 1-3 47.00-48.00.

SOWS: US NO. 1-3 32.00-37.00.

BOARS: 26.00-32.00.

FEEDER PIGS: 36 HEAD. US#1&3 20-50 LBS. 12.00-26.00.

SHEEP: 46 HEAD. CHOICE LAMBS 90.00-110.00; GOOD LAMBS 80.00-90.00; SLAUGHTER EWES 35.00-45.00.

GOATS: 16.00-56.00.

43 LOADS OF HAY. ALFALFA 73.00-100.00; TIMOTHY 53.00-91.00; 6

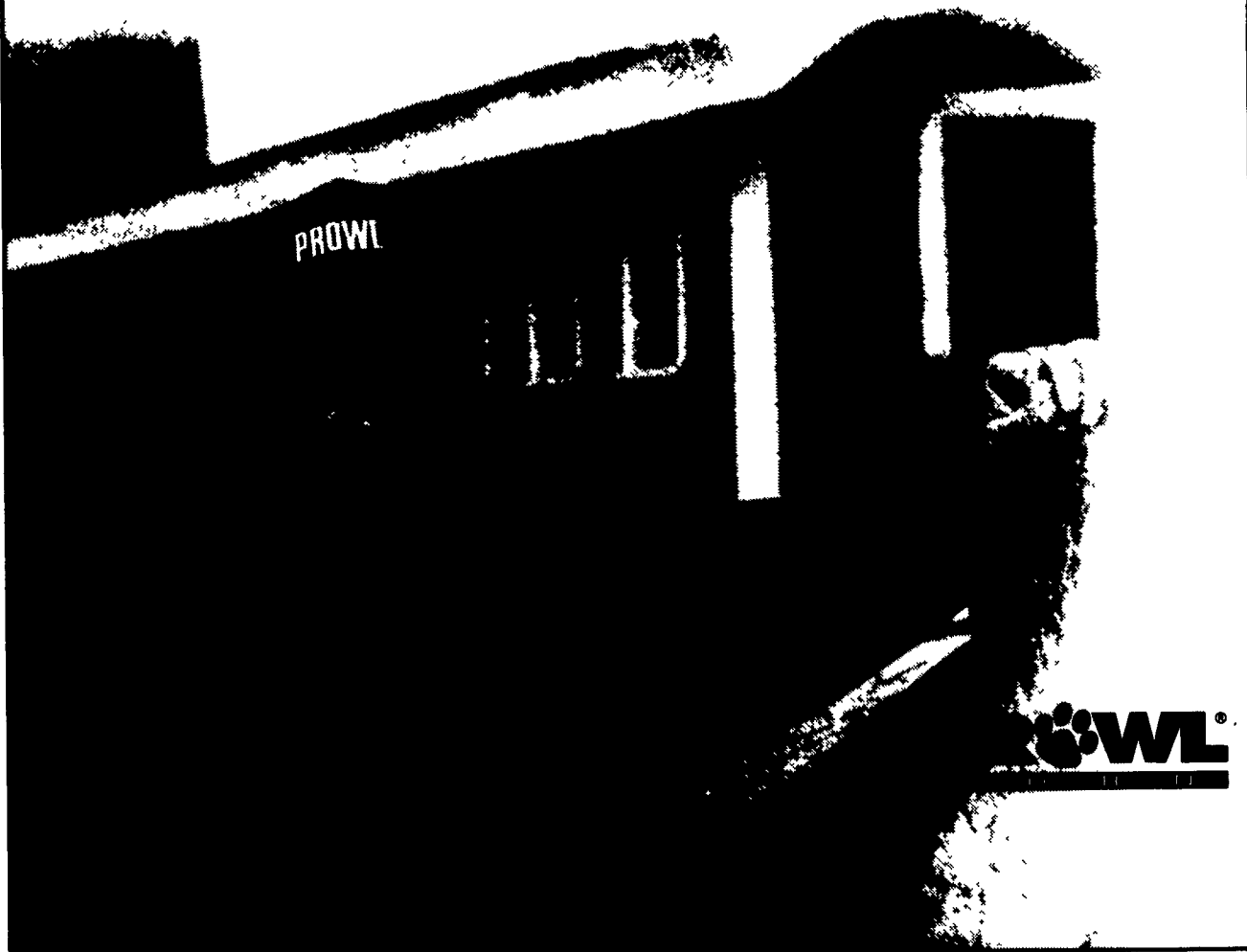
LOADS OF STRAW 58.00-73.00; 2

LOADS OF EAR CORN 98.00 AND 111.00.

"Prowl lets me worry about things other than spraying my corn again in the summer; it works great all season."

Phillip
Potter

Tully,
New York



SPECIAL SALE OF LAMBS and GOATS

For Easter Trade
SAT., MAR. 30

SALE TIMES

10:00 a.m.,

Rabbits, Poultry

1 p.m. Goats - Lambs

Receiving Starts 7 AM

Terms: Cash,

Approved Check

Number System,

Buyers must register

WESTMINSTER

LIVESTOCK AUCTION

Westminster, Md.

410-848-9820

FEEDER SALE

Weds. Mar. 27

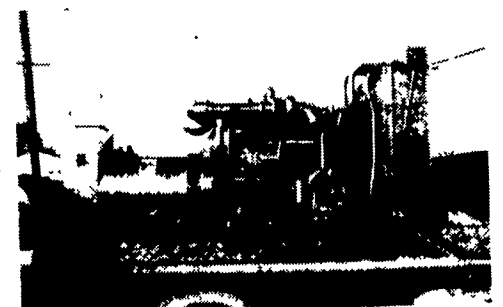
7:30 P.M.

Four States

HAGERSTOWN,

MD.

301-733-8120



GENERATORS

Sales ★ Service ★ Rentals
★ Complete Generator Systems
★ PTO ★ Portables ★ 2-1600 KW

*"We Service It If You Have It
And Sell It If You Need It"*

34 W. Mohler Church Rd.
Ephrata, PA 17522

Tel: 717-738-0300

Fax: 717-738-4329