

## Public Auction Register

Closing Date Monday 5:00 P.M.  
of each week's publication

SAT. MAR. 23 - 9AM HH Goods, antiques, all kinds of tin & iron toys. At 650 S Market St., Elizabethtown, Pa. by Clair & Ruby Naudan Harold "Abe" Shafner, auct

SAT. MAR. 23 - 9AM Outstanding Antiques, Paint Decorated, Period & Country Furniture, Miniature Furniture & Decorated Boxes, Fractur Watercolors & Bookplates, Soft Paste China & Many Other Fine Antiques. Sale to be held at the Horst Auction Center Located at the Corner of Rt. 322 & Durlach Rd. (Approx. 2 1/2 Mi West of Ephrata) Ephrata, Lanc. Co., PA. Terms by: H. William Koch Estate T Glenn Horst Aucts.

SAT. MAR. 23 - 9AM, Tractors, Farm Mach, Trucks,

Parts, at Yingling's Implement, 3291 Taneytown Rd (Rt 134) Gettysburg, Approx 7 mi S of Gettysburg, 3 mi S of Rt15, 1 mi N of Hamey, Md.

SAT. MAR 23 - 9AM, HH goods, Collectibles & some Furniture, Silver Springs Fire Hall, Silver Springs, Pa. From Lanc., take 30W to Centerville Exit, turn rt at light, 2nd light, turn left on Marietta pike. Approx. 4 mi on rt. All-American Auction Service, Auctioneers.

SAT. MAR. 23 - 9:30AM Phyllis Fisher Karney, owner. At Steinbacher American Legion Post #617, 60 E. 8th Ave., South Williamsport, Pa. Collectibles & Antiques. Scott Younkin, auct.

SAT. MAR. 23 - 9:30AM Farm machinery, irrigation pipe, butcher equip, S roll

top desk, antiques & household goods. At 723 Blandon Rd. Oley, Berks Co., Pa. For Wellington A. Hiester Sr. Estate. Frey Aucts.

SAT. MAR. 23 - 9:30AM Selling full line of construction tools & equip. Horst Construction owner. Held at Middleburg Livestock Auction along Rt. 522 E. of Middleburg. Hassinger & Courtney, aucts.

SAT. MAR. 23 - 9:30AM Farm Equipment, Household Goods. Located 1 Mi. West of Georgetown Turn Off Rt. 896 On Furnace Rd. Terms by: H. Grant Troop. Robert E. & Jeffrey R. Martin Auct. Michael L. Martin Apprentice.

SAT. MAR. 23 - 9:30AM Consignment auction. Farm equip, tractors, holstein heifers, horses, tools & hardware, books, groceries, etc. 3 miles S. of Marshall, In. and 3 miles N. of Rockville, In. on Rockville Lake Rd. Fred Cox, auct.

SAT. MAR. 23 - 9:30AM Antiques, collectibles. Beavertown, Pa. at the Rescue Hose Co. Fire Hall, 1 block S. of Rt. 522 along Sassafras Ave. Mark J. Jones, auct.

SAT. MAR. 23, 9:30 AM - Antiques, Furniture, Collectibles, Exit 33 off I81, For Dorothy Scully, POA Jean Huth. Conducted by Francis (Pete) Schultz, Auct.

SAT. MAR. 23 - 9:30AM, Farm Mach, at Westminster Livestock Auction, along SR 31 between Westminster & New Windsor, Md. Conducted by Robert L. Hooper, Auctioneer.

SAT. MAR. 23 - 10AM Middletown, DE rt. 301, 1/2 mi. N. of Md Line next to Hooper Equip. Furniture, smalls. John JG Green, auct.

SAT. MAR. 23 - 10AM At Linglestown Fire Co., just west of the square along Linglestown Rd. app. 8 mi. E. of Harrisburg. Golden Auction Service.

SAT. MAR. 23 - 10AM Annual consignment auction Andrews Farm Equip. of Conneautville, Pa.

SAT. MAR. 23 - 10AM Full

Line of Farm Machinery, 10 Tractors, Trucks & Tools. Lakedale Road, Winslow Twp., NJ, 5 Mi. N. of Wil-

hamstown off Rt. 536 Spur. Sale for Gerald Barrett. Wolgemuth Auction Service.

## PUBLIC AUCTION SAT., MARCH 23 10 AM

AT THE LINGLESTOWN FIRE CO., LOCATED JUST WEST OF THE SQUARE ALONG LINGLESTOWN RD. (APP. 8 MI. EAST OF HARRISBURG) USE EXIT 26W OFF I-81.

SELLING A NICE ASSORTMENT OF ANTIQUES, COLLECTIBLES AND FURNITURE FROM A LOCAL ESTATE, ALONG WITH A GREAT COLLECTION OF LIMITED ED. STEIFF BEARS (APP. 30 PCS) INCLUDING THE HARD TO FIND CIRCUS TRAIN AND MUCH MORE. ALSO, MUFFY BEARS, SEVERAL OLD DOLLS, SOME TOYS, DISNEY, ROSEVILLE POTTERY, CUT GLASS, ART GLASS, SATSUMA VASE, HULL POTTERY, PORCELAIN, CARNIVAL, PRIMITIVES, OLD ADVERTISING, PHOTOS, OLD PRINTS, CURRIER, NUTTING TYPES, OLD TIN MEASURES, KITCHEN ITEMS, TRANSFERWARE, COLLECTOR PLATES, ORIENTAL, POST CARDS, OLD 1ST DAY COVERS AND POSTMARKS, OLD HARRISBURG RIBBONS/MEDALS, WINCHESTER, KEEN WATCHES, CELLULOID, ESTATE JEWELRY, 3 POCKET KUTTERS, COINS, SOME OLD BOOKS (SOME SIGNED, 1ST. ED., COSSELL, MICHAEL JACKSON), OLD MAGS (BEATLES, ELVIS), OLD PENS, SOME STERLING, OLD ALMANACS, NEEDLEWORK, WONDERFUL EARLY QUILTS, A GREAT EARLY COVERLET W/SUNBURST AND EAGLES (MINT COND.), EARLY APOTH. JAR, CAST IRON, OLD HARRISBURGER HOTEL ITEMS, AZTEC FEATHER PRINTS, WESTMORELAND, OLD CHILDREN'S BOOKS, CHILDREN'S IRONSTONE, QUALITY ARTIST BEARS AND ACCESS., SEVERAL EARLY BABY DRESSES (GREAT COND.), COOPERSTOWN BEARS, RAIKES ITEMS, ARMY OUTFITS, MAAS LT. ED. SPORTS ART, AND MORE. FURNITURE (MIXED STARTING AT 12 NOON): BARRISTER OAK BOOKCASE, PERIOD EMPIRE CHEST, A GREAT ORNATE WALL MIRROR, ONE DRAWER PRIMITIVE STAND, TWO DRAWER SHERATON CHERRY STAND, EARLY WINDSOR CHAIR, ORNATE EARLY ROCKER (SIGNED), VICT. CHAIR, A LARGE OAK CASED INT. TIME RECORDING CLOCK, AND MORE. NOTE: A GREAT SELECTION OF STEIFF, SMALLS, FURNITURE.

TERMS AND CONDITIONS: CASH OR APPROVED CHECK. ID FOR BID NUMBER. VISA OR MASTERCARD ACCEPTED. SNOW DATE: SUNDAY, MARCH 24 AT 1 PM.

NOTE: WE BUY AND SELL QUALITY ANTIQUES, FURNITURE, TOYS, COINS ETC.

CALL TO CONSIGN OR SELL. WE OFFER PROMPT, COURTEOUS SERVICE.

GOLDEN AUCTION SERVICE  
TOM GOLDEN, AUCTIONEER 2584L  
(717) 652-3949

## ANNUAL SPRING CONSIGNMENT SALE

Sat., March 23, 1996 9 AM

Sale held at Juniata Markets, Jct of Rts 75 & old 22, at the blinking lights, 1 mi N of Port Royal, just off the Port Royal Exit of Rt 322, Juniata Co.

### MACHINERY, TOOLS, FARM RELATED & MISC ITEMS

Farmall M tractor w/front end loader, (solid bucket); N.H. #718, forage harvester, corn & grass head (used 3 years); I.H. #650 forage harvester w/2 row, wide corn head and pick-up; I.H. #55 forage blower; White, #543, 4 row, no till corn planter w/insecticide & boxes; I.H. #56, 4 row wide corn planter; Farmall 100 w/plow, cultivators & scycle bar mower; N.H. #273 hay baler w/thrower; N.H. #256 hay rake; Massey Ferguson, MC 31, 3 point hitch scycle bar mower; 3 point hitch, 6' scraper blade; Int. #510, 5/16 trip back, semi-mounted plows; Kill bro., Easy Flow grain bin; Badger, forage box & chassis; I.H. #105, 3 beater, self unloading wagon; Gehl, #610, 2 beater, self unloading wagon; (2) 16' hay rack wagons; generac, 15,000 W generator, 3600 RPM, PTO, on rubber tired trailer; 12x38 tractor chains; dbl action, hdy. cyl. barn fogger; (3) Ton wheat straw; (100) locust posts; (2) load firewood; misc carpenter and electrical tools; plus much more.

### VEHICLES, TRAILERS and GOLF CARTS

1983 GMC dump truck, V-8 (gas), 22,000 GVW; 1984 Chevy Van, Gladiator Version, V8 automatic, good tires; 7000 GVW trailer; Yamaha, gas powered, 4 wheeled golf cart; EZ-E-GO, electric powered, 3 wheeled golf cart.

### MANY, MANY ITEMS USUALLY SHOW UP AT THE LAST MINUTE. COME and SEE WHAT WE HAVE.

CONSIGNMENT DATE - March 22 from 9 AM to 5 PM or Ph. (717) 527-2405 or (717) 436-9294

TERMS - CASH OR GOOD CHECK. NO OUT OF STATE CHECKS.

JUNIATA MARKETS (Sale Site)  
Ph. (717) 436-9294

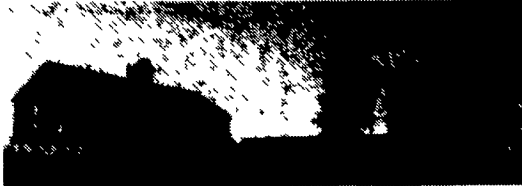
LONG'S AUCTION SERVICE  
Ph. 717-527-2405  
Fax 717-527-2941  
AU001702L

RESTAURANT OPENS at 7 A.M. \*\* NOT RESPONSIBLE FOR ACCIDENTS ANTIQUE & GIFT CO-OP and FARMER'S MARKET OPEN 8 AM to 3 PM

## COMPLETE AUCTIONEERING SERVICE

FRI., APRIL 19, 1996 1:00 P.M.

60+ ACRE UNION COUNTY FARM (EAST BUFFALO TOWNSHIP)



LARGE 2 STORY COLONIAL BRICK DOUBLE HOME  
48X120 BANK BARN W/35 STANCTIONS 756 GAL. BULK TANK W/STAINLESS STEEL PIPELINE, GUTTER CLEANER & LAGOON.  
42X60 IMPLEMENT SHED; 40X84 HEIFER BARN W/SHOP 16X60 & 10X50 SILOS  
THIS FARM HAS SOME OF UNION COUNTIES FINEST SOILS  
TITUS & ADA REIFF OWNERS

KENNETH E. HASSINGER  
RR 02, Box 985  
McClure, PA 17841  
(717) 658-3536  
AU-001532-L



NEIL A. COURTNEY  
R.D. #1 Box 239  
Richfield, PA 17086  
(717) 539-8791  
AU-002651-L

## CONSIGNMENT SALE

MARCH 27, 1996

9:00 AM

LOCATION GOOD'S AUCTION  
111 NORTH MAPLE AVE.  
LEOLA, PA 17540

Tractors, Trucks, Farm Equipment

N.H. 320 Baler w/Thrower, I.H. Backhoe (needs motor work), 95 Gehl Mixer, J.D. 54 Manure Spreader, N.H. 455 - 456 Mowers, N.H. 2656 Hay Rake, Ford 2-Row Corn Planter 3 pt., I.H. 6-Row Corn Planter, New 3' & 4' Roller Harrow, New Utility Trailer, N.H. 275 Baler, I.H. 46 Baler w/Eng., McCormick Corn Binder w/Table, 2 - McCormick Drills, J. Plow, J.D. Mower, Cornbinder, 12 Tooth J.D. Chisel 3 pt., N.H. Tank Spreader, Mott Mower, 3 pt. Backhoe, M.F. Mower, 18' White Disc, I.H. 4 Bottom Semi Mtd. Plow, Hobart Welder (portable), Air Compressor (portable), 20' Steel Truck Body (New), 1968 International Truck w/dump, Dump Body, Stake Dump, 3 Axle Trailer, I Beams, Rocker Body, Radial Arm Saw, 5 hp Table Saw, Fire Extinguisher, Elec. Meat Saw.

New N.H. BALER PARTS, New J.D. 5' Bucket, J.D. Wheel Weights & PTO Shafts, Lumber from 3 - 48' - 75' Pole Building, Tractor Trailer of Oak 1"x4"x8" 7' long.

**SPECIAL MOWER SALE 4:00 P.M.**  
Honda 4518 2 Cly. Hyd. (like new), 154 Cub Low Boy Belly Mower, 1822 Grass Hopper (D), JOHN DEERE 420, 2 - STX 38, 175, 140, STX30, 300, 214, 112, 111, 168, 110, 170, Kubota B5100 (D) 3 pt. Belly Mower, 2 - 8 hp Troy-Bilt Tiller, 2 Honda Tillers, Poulan Pro 11 hp. (like new), I.H. 1250, 105, 1650, 129, 8 hp & 20 hp Craftsman, Ford Lgt. 18, Ford YT 16, Honda ATV 3-Wheeler, Dynamark, Wizzer, Plus a lot of Push Mower.

Note: This is only a partial list, A lot more equip. and mowers are expected. List subject to change. Come spend the day with us.

Receiving now 8-4 Mon. thru Fri., Sat. 8-12.

NEW MANAGEMENT  
WOLGEMUTH AUCTION 2357  
FOR INFORMATION CALL DENNIS  
(717) 656-2947 or (717) 733-8192  
Fax (717) 656-6011

NEXT SALE APRIL 24, 1996

## FAMILY FARM - MACHINERY AUCTION

Tractors - Combines - New Baler - Full Line



THURS., MARCH 28, 1996

AT 10:30 A.M. SHARP!

For Lou and Sharon Ruberto  
15 Manners Rd., Ringoes, N.J.

12 mi N.E. of New Hope, Pa. 8 mi. S.E. of Flemington, N.J. From Rt 202-31 at Ringoes, N.J. take Rt 514-East approx 3 1/2 mi. to Rt 609 South (Manners Rd) go 2 mi. to farm. RETIRING FROM FARMING! OWNER 609-466-4325 4 P.M. TO 7 P.M. ONLY!

10:30 A.M. small items, port. gr tester, Kutrieb waste oil shop heater, steam cleaner, 2x6 lumber, used galo roofing, 10 new telephone poles, Onan PTO - port generator 12 KW, Herd 3PT new PTO seeder, plus more.

11:30 A.M. - TRACTORS - 3 JOHN DEERE'S - #4430-DL-cab-QR-loaded-Real Clean, #4020-DL-WF-3PT-P-Shift, #3020-DL-P-Shift, #46A loader w/ bkt and snow plow for 3020. \*\*\*COMBINE - White #8600-DL-cab w/#704-W-4 row corn hd - 13' gr hd - kept inside!

HORSE TRAILER - ARNDT CUSTOM FOUR HORSE TRAILER - used 5 times - dressing room - side loading - TB height-gooseneck - like new. \*\*\*TRUCK 1988 - Ford-DL Super Duty - dully w/9' metal body - center hitch - sleeper and extra tool compartments - 120 gal fuel cap - 5 spd O/D - Clean.

HAY EQ. - N.H. #489 haybine - SUPER SHARP, Kuhn - 3PT hi speed tedder rake, Kuhn 4 row tedder, Pequea tedder, N.H. #256 rake, \*\*\*JD-#348 HAY BALER w/#40 HYD KICKER - 1 YR OLD - BALED 3000 BALES - SHOWROOM COND!! \*\*\*7 KICKER HAY WGN'S 2 - Bale Kings 21' metal, 2 - metal 18' factory, 3 - wood 16 to 18', 2-hay and gr elevator approx 32' and 50'.

TILLAGE EQ. - JD-4 btm 3PT plow, 7' -3PT chisel plow, JD-12' hyd disc, JD-10' hyd roller harrow, Pittsburgh 16' wing fold harrow, AC-#1200-13' field cult.

GRAIN EQ. - Farm Fan 120 bu batch dryer - electric powered - A1 under cover, 8"x20' fill auger, 6"x40' hyd port. auger, Favorite 160 bu and Heins 125 bu G flow grn wgn's.

MISC PLANTERS & EQ. - JD-494A - 4 row corn pln, JD-15 hole gr drill w/seeder, 2-PT rotary mowers 5' and 6', Flat wgn, 3PT rear scraper, 2 horse trailer, 2 wh trailer, Calhoun tandem fert spdr for parts.

AUCT NOTE! Selling in an area where there aren't many farmers left anymore. It will pay for you to attend!

Blizzard date 4/1/96 Same time.

INSPECTION Mar. 23 & 24 only 9 A.M. to 5 P.M.

TERMS - OUT OF STATE BUYERS - Cash or Guaranteed Funds or Current Bank Letter of Credit Stating Amount you can spend up to on 3/28/96 at the Ruberto Sale! Full Settlement Sale Day!

SALE CONDUCTED BY: COL. FRED R. DANIEL AUCTIONEERS INC.

Neshanic Sta., N.J. 908-369-4784

(The Farm Equip. Auction Co.)