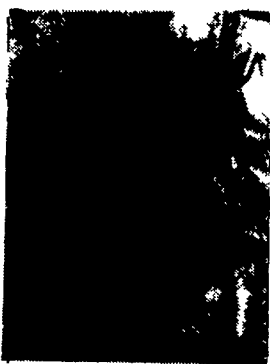


PENNSYLVANIA MASTER CORN GROWERS ASSOCIATION

President's Message

Curt Rakestraw
President, PMCGA



I know most of us grain farmers are beginning to look forward to the spring planting season. The warm spring sun is sure going to feel good after the winter we've had.

This year may be a year to look forward to. In fact, it just might be one of the best years for grain farmers in a long time.

Subsoil moisture looks good and so do grain prices.

I know after the last few short corn crops we have had, the price would collapse the following year. This year, several reasons are making the price look very promising.

First of all, with wheat prices as high as they are, there should not be much substituting wheat for corn. Wheat prices have a good chance of being high for this year's crop because the Kansas wheat crop

is looking poor.

Second, the corn and soybean crop in the southern hemisphere is continually being down-graded. This should lead to a continued good export of U.S. crops.

Next, Dr. Louis Thompson, along with a number of other meteorologists, are predicting that weather patterns over the Midwest will not be typical for a big Midwestern corn crop.

For The Best Tillage Equipment Made, See Binkley & Hurst Bros. Today!

FROM HARDPAN SHATTERING TO RESIDUE COVERED FINISHED SEEDBEDS... SUNFLOWER EXCEEDS YOUR TILLAGE NEEDS

SUNFLOWER RIPPERS

- ★ **VERSATILE**
 - ★ **ADAPTABLE**
 - ★ **TOUGH**
 - ★ **PROVEN**
- Check Out These Features:
- ✓ 10'-18' Frame
 - ✓ 3-9 Shanks On Infinite Spacing From 15"
 - ✓ 36" Under-Frame Clearance
 - ✓ Heavy Duty Trip Mechanism Allows Shanks To Trip
 - Back 36"
 - 10' & 14' Frames In Stock
 - We Will Install Your Choice Of Number Or Shanks To Match Your Tractor Horsepower
 - ✓ 5100 lb. Max Point Pressure
 - ✓ 2" Slip-In Spindles On 2 Or 4 Wheels
 - ✓ 18" Upward Tripping Clearance On 2 Or 4 Reset Shanks
 - ✓ **GREAT PRICE VALUE!!**



"Boiling, uplifting action in the soil allows water to enter and be retained in subsoil, minimizing runoff. Yield increases up to 10 bu. more corn per acre," Lancaster Co. farmer.



COULTERS CHISEL

8'9" to 18'9" Widths Available!

CHECK OUT THIS SUPERIOR NEW PRODUCT FROM SUNFLOWER!

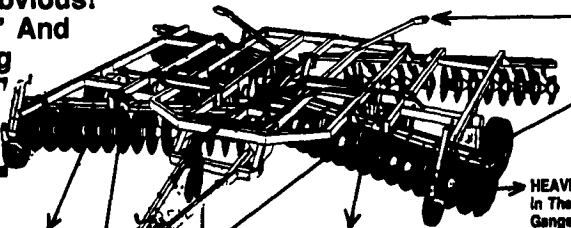
Four inch twisted shovels provide maximum residue incorporation. Optional 2" reversible shovels team with hydraulically-adjustable coulters to give maximum residue cover while "perforating" plow pan to encourage water retention.

- New extended frame length for better trash clearance
- Auto-reset trip
- Heavy-duty 4"x6"x4" mainframe construction.
- Hydraulically controlled coulters gangs (optional) can be adjusted on the go or raised completely in clean soils.
- Walking tandems to better conform in uneven ground conditions.

WHY BUY A SUNFLOWER DISC HARROW?

The Reasons Are Obvious!
Sizes From 10'-15' And 18'-32' Folding

Check Out The Rest - Then Buy The Best! **SUNFLOWER**



WING GAUGE WHEELS Eliminate Gouging

BLADES: 1/2" x22" or 1/2" x24" On 8.5" Spacing 3 Sided Blade Prevents Erosion By Eliminating A Continuous Furrow

DOUBLE OFFSET DESIGN Provides Maximum Leveling Without A Middle Buster Or Center Tooth

SELF-LEVELING HUTCH Maintains Level Setting Regardless Of Desired Depth Or Tillage Application

TRANSPORT WIDTH On Wing Units Up To 24'2" Working Width Is A SAFE 12'4" Transport.

3 YEAR WARRANTY On Triple Lip Sealed Trunnion Mounted, Regreassable BEARINGS

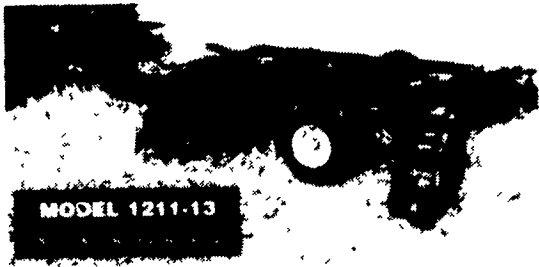
HEAVIEST AXLE SHAFTS In The Industry - 1 1/2" Dia. Gange Are Hydraulically Torqued To 1400 Lbs. & Spring-Loaded To Eliminate Loosening, Wear And Breakage.

Your Choice Of RIGID OR C-FLEX BEARING STANDARDS.

MODEL 1211-13

If your tillage program requires the use of a disc harrow, look no further. Sunflower disc harrows are proven performers. The super-stars of the Sunflower lineup!

Try one today. Small non-foldup Sizes 10' To 32'



MODEL 1211-13

BINKLEY-HURST BROS. INC.
Fax 717-626-0996

133 Rothsville Station Rd.
P.O. Box 0395
Lititz, PA 17543-0395
(717) 626-4705

Farm Plan
A Service of FFC Financial
1-800-487-2978

Finally, usage is projected to be around nine billion bushels for 1996-1997. With 82 million acres planted and 74 million acres harvested at an average yield of 125 bushels per acre, a total crop would be 937 billion bushels. A crop this size would only add 300 million bushels to the carryover

and be the second smallest carryover in history!

I know there are a lot of maybes and assumptions written here. However, with a little luck and the help of God, this season will develop to its fullest potential and be one of the best ever.

Sincerely,
Curt Rakestraw

Corn Growers Take Seat At Table

WASHINGTON, D.C. — Secretary of Agriculture Dan Glickman named an Ohio farm leader active in the National Corn Growers Association (NCGA) to a newly-formed advisory committee on concentration in agriculture.

Brent Porteus, a corn farmer and immediate past president of the Ohio Corn Growers Association (OCGA), accepted the appointment to serve on the 21-member committee. Glickman formed the group to examine the impact of shrinking competition in meat packing and other segments of agriculture.

"I want to represent the best interests of corn growers," Porteus said, "I'm going into this assignment with an open mind and without any agenda."

U.S. farmers produce more corn than any other crop. Most of it is used to feed livestock for meat production.

The committee plans on examining competition in many segments of agriculture. Porteus mentioned two that will attract his attention.

"The impact of consolidation and mergers in the meat packing industry can be very significant to the viability of livestock producers who also rely on us," Porteus said.

"But I want the committee to look further than just that. I want us to examine the increased consolidation of the transportation sector, especially the rail system and the impact it's having on corn and other grain producers."

Corn growers across the country express concern about railroad car shortages and other problems which slow the movement of grain and depress prices.

Porteus farms 1,000 acres of corn, soybeans, and alfalfa in eastern Ohio with his father and brother. They also run a cow-calf operation. He led the Ohio corn growers in 1995 and now serves on the board of directors and government relations committee of the NCGA.

The Coshocton County, Ohio farmer holds a bachelor's in agricultural economics from Ohio State University.



WARNING, ALL SILO OWNERS

Check your silo now for rotten staves. If you have been using your silo for 10 to 15 years for either corn silage or haylage, it is time to SHOTCRETE.

RESURFACES INTERIORS:

- Coats the silo's interior
- Protects feed in storage
- Durable, tough, acid resistant
- Increases useful life
- Economical



Before The silo interior with plaster damaged and stave exposed



After The surface is reconditioned and a new thick tough surface will protect stored feed

REPAIRS HOLES:

- Repairs even large holes
- Up to twice the strength of the original stave
- Rapid application
- Durable surface



Before A hole is worn completely through the silo wall



After With the hole repaired by Shotcrete and a new surface applied the silo is ready for years of use

EXTENDS USEFUL LIFE:

- Support for old foundations
- Special repairs can be made quickly and economically
- Little or no forming needed
- Stronger than the original



Before The bottom part of the staves are completely worn away



After The Shotcrete System repairs and replaces the missing structure

Shotcrete is also good for repairing stone walls

When you think your silo is beyond repair **THINK OF SHOTCRETE!**

Lancaster Silo Co., Inc.
2008 Horseshoe Rd. • Lancaster, PA • (717) 299-3721