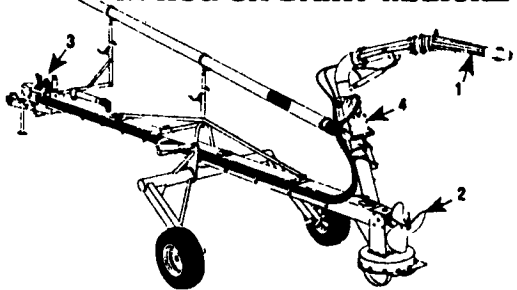


TRAIL AGI-POMPETM

32' AND 42' FOR LAGOONS

**GREAT PERFORMANCE
IN HOG OR DAIRY MANURE**



In Stock For Immediate Delivery

- 1- Highly articulated nozzle designed to slice and break the top crust from above the manure level as the propeller homogenizes the liquid with the remaining floating chunks
- 2- 24" dia. mixing propeller providing full time agitation up to 21,500 US G PM even when loading a spreader
- 3- Hydraulic controls can be operated from tractor seat
- 4- Rotative directional valve designed to be operated at low RPM without stopping the PTO

Gear box oil bath protected by a greaseable 3 seals mechanism on each shaft.

AVAILABLE WITH MULTIPURPOSE OPTION TO ALSO CLIMB INTO CONCRETE PITS UP TO 14' DEEP.



HOULE FARM EQUIPMENT MANUFACTURER

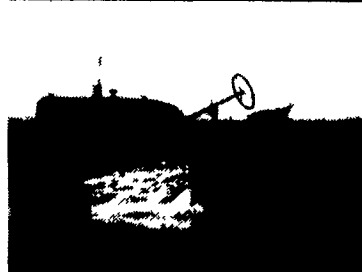
"We're Here To Serve You"

SNOOK'S EQUIPMENT

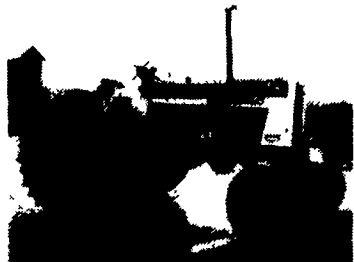
RD 3, Box 130, Mifflinburg, PA 17844
717-966-2736
Ask For Ernest Or Dean



AC 5000 lb. Forklift
Propane, 3 stage mast, No-mark tires, P.S., Automatic
\$3,800



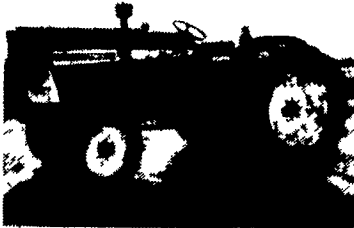
AC CA
W/Two bottom plow, runs excellent
\$1,600



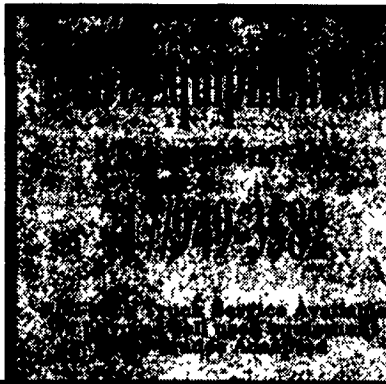
IH 856 Diesel W/Turbo
Rebuilt PTO, weak TA, 3 point, good rubber, runs good
\$6,500



JD 401-C Loader Tractor
55 HP, diesel, reverser, PTO, 3 point, P.S., runs good
\$6,700



IH 606 Diesel
TA, PTO, 3 point, P.S., good rubber
\$3,200



Take Exit 20B
Off Of 83, 5 1/2 Mi. West
To Belmont Farm.

IH 756, 540/1000, 3 pt, "310" engine, Dual Hyd. and IH 2250 Mount-O-Matic
\$8,500

Will Separate — Loader \$3,000
Financing & Trucking Available

410-833-9091

HORSE BITCH EQUIPMENT

5% OFF THROUGH MARCH
Total amount of Price shown

- Yokes..... \$11.00
 - Double Tree..... \$22.00
 - Triple Tree..... \$48.00
 - 4 Horse Hitch..... \$65.00
 - 5, 6 Horse Hitch.... \$45.00.... Complete \$137.50
 - 7, 8 Horse Hitch.... \$52.00.... Complete \$175.00
- These Items In Stock • Delivery Available

10% OFF THROUGH MARCH

- Bolts Reg. Price Per Lb. \$1.95
- Carriage Bolts..... \$1.35
- Leg Bolts..... \$1.75

We Have Pipe In Stock 3/8" - 5"

ADDITIONAL 2% DISCOUNT IF PAID CASH

NOTTINGHAM WELDING

Manufacturing • General Repairs
3510 Jackson School Rd. • Oxford, PA 19363
(717) 529-6915 Call between 8-9:30 AM

Follow a LEADER



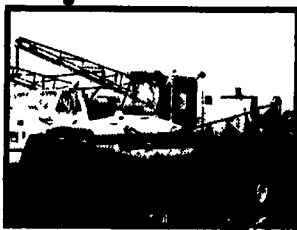
John Blue Sprayer



Hydra Track



Hy Rise



1989 220 Spra-Coupe



Call TODAY!
800-345-3546 (PA)
800-848-8460 (OH)

GVM USED EQUIPMENT

GVM Hydra Sprays

- **GVM Hy-Rise 1991, 1991 Ford F-350 4x4, 7.3L Diesel Raven 440 Controller w/Radar Gun, Multi Wing Fan, 430 SS Tank, 50' Booms, 30 Gallon Poly Wash Tank, Hy-Rise Kit, 90" Wheel Centers, 7.50x20 Tire Package..... \$37,500**
- **1992 GVM Hydra Spray, Raven 440, Suspension Hitch, Stainless Fenders, 430 Gal. S.S. Tank, Hyvolume System, 45' Booms, 30 Gal. Side Mount Take, 28,300 Miles On Chassis, Suspension Seat, 14/17.5 10 Ply Flotation Pkg., 9.00x16 Row Crop Pkg., Fence Row Nozzle..... \$35,000**
- **1994 GVM Hydraspry, 540 Gallon S.S. Tank, S.S. Valve Package, 100 PSI Washer, Pass. Seat, Suspension Seat, 20/30" Nozzle Spacing, 30 Gal. Fresh Water System With Pressure Washer, 9x20 Tire Package, Electric Agitation, 50' Booms, Fence Row Nozzle..... \$46,900**
- **Pull Sprayer**
- **1000 Gallon Tandem Axle John Blue Pull Sprayer L-3000 Pump, 40' Booms, 40" Nozzle Spacing, PTO Agitation Pump, Hydraulic Press Wheel, Hydraulic Booms, Foam Marker, 2 Section Boom Shutoffs. Runs Good. Has Chemical Inductor Also..... \$5,600**
- **Hydraslide**
- **1993 Year Old GVM Hydraslide..... \$7,500**
This is a Slide In Pickup Sprayer, With Hydraulic Booms, Foam Marker, Raven 440, Field Ready.
- **Spray-Coupe**
- **1989 220 Wide Front, Hiniker Monitor, A.C., 50' Booms, Electric Booms, Carbon Filter, Old Style Seat, 1080 Hours..... \$16,900**
- **1990 220 Wide Front Spray Coupe, 754 Hours, Hiniker Monitor, Foam Marker, 60' Booms, A.C., Deluxe Seat, Carbon Filter, Tow Hitch..... \$16,900**

Loaders

- **1 - 1985 4x4 Dipper Loader, Diesel Engine, 30 CU Ft, Bucket In Running Condition..... \$5,100**
- **1 - 1985 4x4 Tyler Challenger Loader, Diesel Engine, 30 Cu Ft., Bucket In Running Condition..... \$5,450**
- **1 - 1985 4x4 Dipper Loader, Diesel Engine, 30 Cu. Ft., Bucket In Running Condition..... \$5,100**
- **1 - 1995 180 Swinger Loader with Diesel Engine, 30 Cu. Ft. Bucket With 275 Hrs. and Factory Warranty..... \$18,750**
- **Truck Spreaders**
- **1994 Demo 12' Transpread, Truck Mount, 304 Stainless Steel 7 Ton Fertilizer, 9.5 Ton Lime, 33" Cleated Belt, With Raven Controller That Controls Drag and Spinner Speed, and Radar Gun..... \$12,500**
- **1994 16' Transpread, Truck Mount, 304 Stainless Steel 12 Ton Fertilizer, 16 Ton Lime, 33" Cleated Belt, With Raven Controller That Controls Drag and Spinner Speed, and Radar Gun..... \$14,500**
- **1994 Double Duty Spreader Body, 7 Ton Fertilizer 10 Ton Lime, 24" S.S. Webb Chain, Dickey John Rate Monitor..... \$8,500**
- **Pull Spreaders**
- **1995 Demo 12' Transpread, Pull Spreader, 304 Stainless Steel 8 Ton Fertilizer, 10 Ton Lime, 33" Cleated Belt, 2-Speed Presswheel, Hydraulic 22.5" Spinners and Single Axle 49x24.00-22.5 Flotation Tires..... \$11,500**
- **Misc.**
- **Chem Farm Pull Between 500 Gal. Elliptical Tank, 47' Booms, 30" Spacing, Chem Farm Centrifugal Pump, Assist Wheels, 3 Pt. Attach..... \$2,600**
- **Dump Body**
- **Grain Body 18' Snyder Dump Body, Hydraulic Dump, Sides, and Double Opening Door (Rear), Is New, But Was Mounted, Single Cylinder, Center Lift, Sides are Removable, Ask For Denny... \$4,750**
- **Blenders**
- **1990 6 Ton S.S. Hopper 12' S.S. Hopper Conveyor, 6-Ton Mild Steel Drum, and a 35' S.S. Load Out Conveyor (Layco)..... \$12,000**

2 FARM EQUIPMENT WANTED

2 used tres, 17.5-25, good tread (301)829-1812

8000 bu. grain bin; Model HD10 shaver post driver 301-293-3661.

Ag-Bag or equivalent, 8', center flail preferred Leave message, (717)865-0938.

Between 60-90HP Diesel Tractor w/Front End Loader (if possible) Can Be Rough As Long As Mechanically Sound Prefer One Owner Tractor 804-983-3069

Brillion 25' X-fold packer (814)466-7074.

Fruit tree planter, 3pt hitch Call Gary 609/924-2310

McCormick, Farmall, IHC, W-12, T-20, or crankstart AV,B, BN, or other early tractors Also, Super A grill 203-795-1116

MF 880 plows, any size, any condition, MF roller plows, Left hand plow parts 717/355-9620

Plow beam extension and bottoms for White, Oliver 6342 rollover plow. 610-754-7875

Snow Blower Approx 7, 3'PT, 16' Aluminum Stock Trailer (717)642-9199

Used industrial grapple bucket for Gehl 4625 skid loader Gussin bale chopper 410-643-5017

WANTED 4-wheel drive tractor with mid mower; diesel running or not (215)794-2069

WANTED Grill for FORD 1900, 4X4 Compact Tractor (814) 664-7407 Erie County

WANTED JD or IH 3x16" semi-mount rollover plow good condition 814/634-9280

WANTED Loader attachment to fit Yanmar 336 4WD (used) Must be good condition With joy stick if possible 610/582-4161

WANTED Three Point Hook-up For Oliver 77, Also Side Tin (410)239-0579

Wanted Tobacco lathe Write to Samuel F Stoltz, 514 Lees Bridge Rd, Nottingham, PA 19362

Want JD 4020 power shift, side console, dual outlets, differential lock, gas or diesel (412)834-1489

WANTED:

USED FORD & KUBOTA TRACTORS

Call 717-949-2000
Daytime