



Phila. Vegetable PHILADELPHIA

Terminal Prices as of 06-MAR-96 RAIN 52-62

VEGETABLES ---ARTICHOKES: ctns CA 18s 15.00 24s 15.00 30s 18.00 fair cond 10.00-12.00 36s 18.00-20.00 fair cond 10.00-12.00 ---ASPARAGUS: MARKET LOWER pyr ctns/crts lse CA Green lge 45.00 pyr ctns/crts bchd CA Green 28s lge few 48.00 fair cond 40.00 28s std few 48.00 fair cond 40.00 MX Green sml 39.00-41.00 28s lge 43.00-45.00 28s std 43.00-45.00 11 lb ctns/crts bchd CA Green 12s lge 21.00 12s std 21.00 ---BEANS: OFFERINGS LIGHT buctns/crts FL Round Green Type fair qual cond 10.00-15.00 ord cond low as 8.00 ---BEETS: MARKET ABOUT STEADY ctns bchd TX 12s 7.00-8.00 ---BROCCOLI: MARKET SLIGHTLY LOWER ctns AZ bchd 14s 10.00-11.00 bchd 18s 11.00-12.00 CA bchd 14s 9.00-11.00 occ 12.00-13.00 previous commitments 6.00-8.00 ord cond 2.00-3.00 bchd 18s ord cond 4.00-6.00 ---BRUSSELS SPROUTS: 25 lb ctns MX 10.00-12.00 mostly 10.00 ---CABBAGE: MARKET ABOUT STEADY 1 3/4 buctns 50 lb ctns FL Round Green Type med 7.00-8.00 few 6.50 Red Type med 8.00 few 9.00 TX Round Green Type med 8.00-8.50 50 lb sks CD Round Green Type lge 5.00 NY Round Green Type lge 4.75 45 lb ctns MX Red Type med 8.00 1 3/4 buctns 40 lb ctns FL Savoy Type med 8.00 ---CARROTS: MARKET ABOUT STEADY sks 48 1-lb flmbgs CA Topped med-lge 10.00-12.00 few 12.50 occ high as 14.00 CD Topped med-lge 8.50 some 9.00 FL Topped med-lge 9.00 sks 24 2-lb flmbgs CA Topped med-lge 11.00-12.00 50 lb sks lse CA Topped jbo 10.00-12.00 occ higher CD Topped jbo 10.00 FL Topped jbo fair cond 8.50-9.50 ctns bchd CA Bunched 24s 11.00 fair cond 8.00-9.00 ---CAULIFLOWER: MARKET HIGHER ctns flmwrpd CA 12s 22.00 fair cond 16.00-18.00 fair qual 12.00-15.00 9s fair cond 15.00 ---CELERY: MARKET SLIGHTLY LOWER ctns CA 2 dz 8.00-10.00 mostly 9.00 few 10.50-11.00 one lot 7.00 2 1/2 dz 9.00-10.00 mostly 9.00 few 10.50-11.00 3 dz 8.50 flmb 30s 12.00 ctns flmbgs FL Hearts 18s 10.00 ---CHINESE CABBAGE: MARKET

STEADY celcrts FL 9.00-10.00 Nappa 24.00 ---CORN-SWEET: MARKET SLIGHTLY LOWER wbcrts FL Yellow 4 dz min fair qual cond 3.00-4.00 White 4 dz min 13.00-14.00 fair qual cond 3.00-4.00 ---CUCUMBERS: OFFERINGS LIGHT 1 1/9 buctns/crts MX med fr qual few 26.00-28.00 ord qual 18.00-20.00 Pickles 200-300s 24.00 ---EGGPLANT: MARKET ABOUT STEADY ctns/crts MX 18s 12.00-15.00 24s 12.00-15.00 mostly 12.00-13.00 fair cond 10.00 ---ENDIVE: MARKET SLIGHTLY LOWER 1 1/9 buctns/crts FL 6.00-7.00 mostly 6.00-6.50 few 5.00 ctns AZ 24s fair qual 5.00 10 lb ctns BL Witloof 13.00 ---BSCAROLE: MARKET SLIGHTLY LOWER 1 1/9 buctns/crts FL 6.00-7.00 mostly 6.00-6.50 few 5.00 ctns AZ 24s fair qual 5.00 ---GARLIC: MARKET ABOUT STEADY 30 lb ctns CA White col 36.00 super jbo 34.50 exjbo 31.50 jbo 30.00 22 lb ctns/crts AG White #6 23.00 #7 25.00 ---GREENS: MARKET ABOUT STEADY ctns bchd AZ Kale 24s 9.00-10.00 CA Kale Flowering 24s 10.00-11.00 ctns/crts bchd FL Mustard sml 7.50-8.00 Turnip Tops sml 7.50-8.00 GA Collard sml 8.00-9.00 Kale sml 7.50-8.00 NC Collard 9.00-10.00 Kale 10.00 Mustard 10.00 Turnip Tops 10.00 Rape 10.00 TX Collard 18s 12.00 Kale 18s 12.00 Mustard 18s 12.00 Turnip Tops 18s 12.00 Dandelion 12s 7.00-8.00 Kohlrabi 12s 7.00-8.00 Red 12s 7.00-8.00 Swiss Chard 12s 7.00-8.00 Red 12s 7.00-8.00 ctns lse NC Broccoli Rabe 8.00-10.00 20 lb ctns CA Broccoli Rabe 24s 11.00-14.00 few higher ord-fair cond 5.00-8.00 MX Broccoli Rabe 24s 12.00-14.00 one label few 21.00 fair cond low as 10.00 ---LETTUCE-ICEBERG: MARKET SLIGHTLY LOWER ctns AZ 24s 12.00-14.00 mostly 13.00 few 15.00 fair cond 6.00-7.00 Wrapped 24s 13.00-15.00 mostly 14.00 few 12.00 30s 12.00-14.00 CA 24s 14.00-15.00 30s 12.00-13.00 Wrapped 30s 13.00-14.00 ---LETTUCE-OTHER: MARKET SLIGHTLY HIGHER ctns AZ Green Leaf 24s 14.00-15.00 few high as 20.00 fair cond 9.00 Red Leaf 24s 20.00 fair cond 9.00-10.00 CA Boston 24s 15.00-18.00 Green Leaf 24s 16.00-17.00 few high as 20.00 Red Leaf 24s 18.00 FL Boston 24s 10.00 Green Leaf 24s 12.00 Red Leaf 24s 14.00 some 15.00 Bibb 24s 7.00-8.00 2.5 lb ctns CA Mesculin Mix 10.00-12.00 ---LETTUCE-ROMAINE: MARKET HIGHER ctns AZ 24s

17.00-20.00 mostly 17.00-18.00 fair cond 16.00 CA 24s 17.00-20.00 mostly 17.00-18.00 fair cond 14.00-16.00 FL 24s 12.00 fair cond 8.00 MX 24s 17.00-18.00 ---MUSHROOMS: MARKET STEADY 10 lb ctns PA lge 12.00-12.50 mostly 12.00 med 9.50-10.50 mostly 10.00 4 qt bkts PA med-lge 5.00-5.50 few 4.75 sml-med 4.00-4.50 5 lb ctns PA Oyster 20.00-22.50 Cremini 9.00 Portobellas 11.00-12.00 mostly 12.00 3 lb ctns PA Shiitake 13.00-15.00 fair qual 11.00-12.50 Oyster 12.00 ctns 12 8-oz trays flmwrpd PA 8.00-8.50 ctns 10 12-oz trays flmwrpd PA 9.50-10.00 ctns 10 10-oz trays flmwrpd PA 8.50-9.00 mostly 8.50 ---OKRA: 1/2 buctns NI sml-med 15.00-16.00 ---ONIONS GREEN: MARKET ABOUT STEADY ctns bchd MX 48s 7.00-9.00 mostly 8.00 ctns bchd bulb type TX 24s 10.00-11.00 ctns bchd MX Leeks 12s 20.00 sml 14.00 ---PARSLEY: MARKET STEADY crts bchd FL Curly 60s few 8.00 Plain 60s 10.00 ctns bchd CA Curly 60s 9.00-10.00 mostly 10.00 Plain 60s 9.00-10.00 TX Curly 60s 10.00-12.00 Plain 60s 12.00-14.00 Roast 12s 13.00-14.00 ---PARSNIPS: 20 lb flmbgs lse CD 13.00 ---PEAS GREEN: MARKET ABOUT STEADY 10 lb ctns GU Snow Peas Decalaxed 12.00 MX Snow Peas 12.00 GU Sugar Snap Peas Decalaxed 12.00 ---PEAS OTHER: OFFERINGS INSUFFICIENT TO QUOTE ---

PEPPERS: MARKET LOWER 1 1/9 buctns/crts FL Bell Type Green exlge 19.00-20.00 fair qual cond 10.00 ord cond 2.00-3.00 lge 14.00-15.00 mostly 15.00 med 10.00-14.00 mostly 10.00 fair appear low as 8.00 fair qual 7.00 sml 7.00-8.00 Mxd Red And Green lge 8.00-9.00 sml-med 6.00-7.00 Red exlge 12.00-15.00 med fair qual 8.00-10.00 MX Bell Type Green exlge fair qual cond 10.00 lge fair qual cond 7.00-11.00 med fair qual 8.00-10.00 Red exlge 15.00 lge 15.00 15 lb ctns MX Bell Type Red exlge ord cond 3.00-4.00 Yellow exlge 18.00 ---PEPPERS OTHER: OFFERINGS LIGHT 1 1/9 buctns/crts FL Long Hot few 32.00 mxd red and green 25.00 ---RADISHES: MARKET ABOUT STEADY ctns tpd 30 6-oz flmbgs FL Red 3.50-4.00 mostly 4.00 ctns tpd 14 1-lb flmbgs FL Red 4.00 ctns bchd MX Red 24s few 7.50-8.00 ---RHUBARB: OFFERINGS NONE ---RUTABAGAS: 50 lb ctns CD COne med 7.00 ---SPINACH: MARKET ABOUT STEADY ctns bchd CA Flat 24s 9.00-10.50 1 2/5 buctns bchd CA Flat 24s 12.00 buctns TX Savoy 10.00 ctns TX Savoy 8.00-10.00 clipped 10.00 ---SQUASH: MARKET ABOUT STEADY 1/2 5/9 buctns/crts FL Zucchini sml-med 12.00 fair cond 5.00-10.00 med fair cond 5.00-10.00 Yellow Straightneck sml-med 10.00-12.00 mostly 12.00 fair cond low as 5.00 med 10.00 fair cond low as 5.00 ctns/

lge MX Zucchini sml-med 12.00-14.00 mostly 13.00-14.00 med 10.00-12.00 mostly 12.00 Yellow Straightneck sml-med 12.00-14.00 med 10.00-12.00 ---SWEET POTATOES: MARKET ABOUT STEADY CURED 40 lb ctns NC U.S. One Jewels med 11.00-12.00 fair appear low as 10.00 fair qual appear 5.50 jbo 6.50 ---TOMATOES: MARKET ABOUT STEADY 25 lb ctns FL Vine Ripes red xlge fair qual cond 5.00 80% U.S. One or Better Mature Greens light red to red xlge 14.00 lge too few sales to quote Local Repack 85% U.S. One or Better Mature Greens pink to light red xlge 17.50 lge 17.50 med 17.50 fls 2 lyr MX Vine Ripes Improved Varieties light red to red 4x5s 9.00-10.00 mostly 10.00 5x5s 8.00 ---TOMATOES, CHERRY: MARKET ABOUT STEADY fls 12 1-pt bkts MX light red to red 9.00-12.00 ---TOMATOES, PLUM TYPE: MARKET ABOUT STEADY 25 lb ctns MX light red to red 8.00-10.00 some 11.00 red fair cond 5.00-6.00 ---TURNIPS: 25 lb flmbgs AZ Purple Top med 7.00-8.00 NC Purple Top med 7.00 25 lb sks GA Purple Top med 7.00-8.00 ---VEGETABLES OTHER: 3 kg ctns IT

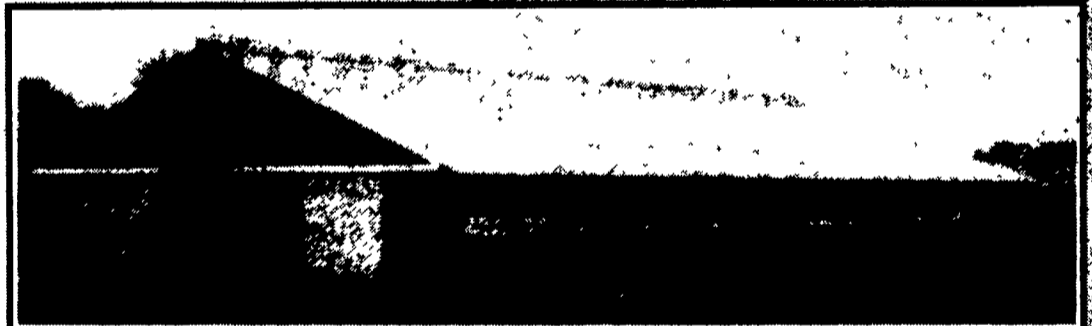
PRODUCE GROWERS and potential growers MEETING PRODUCE AUCTION
Kirkwood area
Wed., March 20 @ 1PM
Corner of Noble Rd. & Rt. 472 (location of Kirkwood Hay Auction) Kirkwood, PA
Speaker: **William Troxell**
Executive Secretary
PA Vegetable Marketing & Research Program
(717) 529-2748

Forney Longenecker
Vice President/Financial Consultant
Commodities
SMITH BARNEY 717-295-8914
800-441-1997
A Member of *TravelersGroup*
SMITH BARNEY INC.
29 East King Street
Suite 200
Lancaster, PA 17602-2852

Leesport Farmer's Market, Inc.
Leesport, Pa (610) 926-1307
SPECIAL FEEDER CATTLE SALE
80 Head of Holstein/Holstein Cross Steers
Plus Others
• CONSIGNMENTS WELCOME •
Refreshments Available
WEDNESDAY, MARCH 13, 1996
2:00 P.M. **Bill Weist**



477 East Farmersville Rd.
New Holland, PA 17557
(717) 355-2361



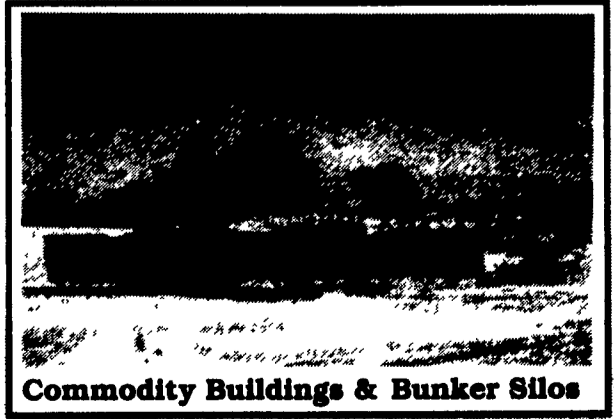
Concrete Slatted Free Stall Barn



Slatted Beef Barn



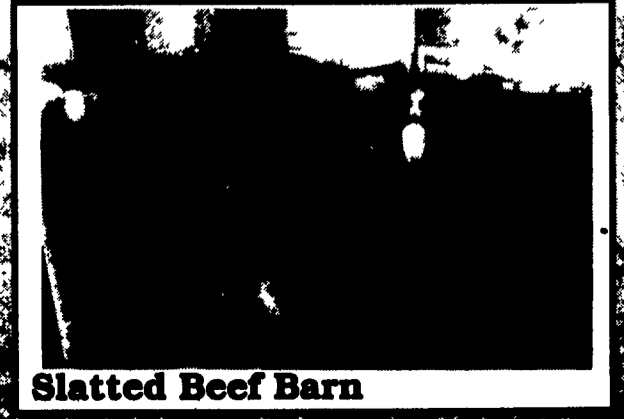
Slatted Heifer Barn



Commodity Buildings & Bunker Silos



Slatted Free Stall Barn



Slatted Beef Barn