

Greencastle Livestock

Greencastle, Pa.

Report Supplied by Auction
February 19, 1996

SLAUGHTER CATTLE RECEIPTS: 587 HEAD. SLAUGHTER STEERS 206 HEAD, STEADY TO 1.00 LOWER.

HIGH CHOICE AND PRIME 2-4 60.00-62.75; CHOICE 2-3 950-1075 LBS. 58.00-62.00; CHOICE 2-3 1075-1375 LBS. 57.00-61.00; CHOICE 2-3 OVER 1375 LBS. 53.00-58.00; CHOICE 4 ALL WEIGHTS 52.00-57.75; SELECT & CHOICE 1-2 950-1100 LBS. 51.00-55.75; SELECT AND CHOICE 1-2 1100 TO 1375 LBS. 50.00-57.00; SELECT & CHOICE 1-2, OVER 1375 LBS. 50.00-56.00.

HOLSTEINS: CHOICE 2-3 1050-1450 LBS. 49.00-56.00; SELECT 1-2 1050-1450 LBS. 40.00-48.00.

SLAUGHTER HEIFERS: 47 HEAD, TREND 1.00 LOWER. CHOICE 2-3 850-1000 LBS. 56.00-60.00; CHOICE 2-3 1000-1250 LBS. 57.00-61.50; CHOICE 4, ALL WEIGHTS, 53.00-59.00; SELECT AND CHOICE 1-2 850-1000 LBS. 51.00-57.00; SELECT AND CHOICE 1-2 1000-1250 LBS. 48.00-55.00.

HOLSTEINS: CHOICE 2-3 1000-1350 LBS. 46.00-52.00; SELECT & CHOICE 1-2 1000-1350 LBS. 39.00-45.00.

SLAUGHTER BULLS: 21 HEAD, TREND STEADY. YIELD GRADE 1, ALL WEIGHTS 45.00-54.00; YIELD GRADE 2, ALL WEIGHTS, 38.00-44.00.

BULLOCKS: 14 HEAD. CHOICE 1-3 950-1150 LBS. 42.00-49.00; CHOICE 1-3 1150-1375 LBS. 47.00-53.00; SELECT 1-2 950 TO 1250 LBS. 44.00-54.00.

COWS: 299 HEAD, TREND STEADY TO WEAKER. BREAKING UTILITY & COMMERCIAL 30.00-33.75; CUTTER &

BONING UTILITY 31.00-35.75; CANNER & LOW CUTTER 30.50 AND DOWN.

STOCKER & FEEDER CATTLE RECEIPTS: 147 HEAD, GOOD DEMAND, STEADY PRICES. BEEF TYPES 200-400 LB. STEERS 45.00-56.00, BULLS TO 44.00-52.50, HEIFERS 39.00-49.50; 400-600 LB. STEERS 42.00-52.00, BULLS 42.00-49.00, HEIFERS 38.00-46.50; 600-800 LB. STEERS 43.00-53.00, BULLS 38.00-42.00, HEIFERS 35.00-45.50; 800-975 LB. STEERS 44.00-52.75, BULLS 34.00-40.00, HEIFERS 38.00-47.50.

HOLSTEINS AND DAIRY CROSS: 200-400 LB. STEERS 30.00-39.00, BULLS 30.00-37.00, HEIFERS, NONE; 400-600 LB. STEERS 30.00-35.50, BULLS 28.00-33.00, HEIFERS, NONE; 600-800 LB. STEERS 30.00-35.00, BULLS 27.00-33.00, HEIFERS, NONE; 800-975 LB. STEERS 31.00-36.00, BULLS 28.00-36.00, HEIFERS, NONE.

CALVES: 419 HEAD. TREND STEADY. CHOICE, 150-300 LBS. 55.00-70.00; GOOD, 150-300 LBS. 45.00-60.00; GOOD, 100-150 LBS. 40.00-50.00; GOOD 80-100 LBS. 30.00-45.00; STANDARD, 80-100 LBS. 25.00-35.00; STANDARD, 80 LBS. AND DOWN 25.00 AND DOWN.

CALVES RETURNING TO THE FARM, TREND STEADY. HOLSTEIN BULLS OVER 100 LBS., UP TO 83.00; UNDER 100 LBS., UP TO 80.00; HOLSTEIN HEIFERS, OVER 100 LBS., UP TO 135.00, UNDER 100 LBS., UP TO 120.00; BEEF TYPE BULLS, OVER 90 LBS., UP TO 60.00; BEEF TYPE HEIFERS, OVER 90 LBS. UP TO 45.00.

SHEEP AND LAMBS: 12 HEAD. TREND STEADY TO STRONGER. CHOICE, 80-100 LBS. 90.00-110.00;

MEDIUM AND GOOD, ALL WEIGHTS, 70.00-85.00.

SHEEP: EWES LEAN 33.00-40.00, FAT 25.00-33.00; BUCKS 22.00-29.00.

GOATS: 81 HEAD. SMALL 18.00-39.00; MEDIUM 40.00-62.00; LARGE 60.00-90.00.

HOGS, SOWS AND BOARS: 89 HEAD, TREND STEADY TO .50 HIGHER. HOGS, BARROWS & GILTS: 210-250 LBS. 46.00-47.75; 250-260 LBS. 46.00-47.25; 260-270 LBS. 45.00-46.25; 270-300 LBS. 42.00-44.00.

LIGHT HOGS 140-180 LBS. 27.00-32.00; 180-210 LBS. 32.00-39.50. SOWS 2.00 HIGHER. GOOD SOWS UNDER 400 LBS. 31.00-36.75, OVER 400 LBS. 32.00-39.50. CULL SOWS, ALL WEIGHTS, 30.00 AND DOWN.

BOARS: TREND 2.00 HIGHER. 180-210 LBS. 28.00-31.00; 210-260 LBS. 29.00-32.00; 260-300 LBS. 27.00-30.00; 300 LBS. AND OVER 27.00-30.00.

SALE EVERY MONDAY AT 2:00 P.M. & EVERY THURSDAY AT 1:00 P.M.

HAY & STRAW SALE EVERY MONDAY & THURSDAY AT 11:30 A.M. SPECIAL FEEDER CATTLE SALE FRIDAY, MARCH 1, 7:15 P.M.

OK City Feeder Cattle

OKLAHOMA CITY, OK
FEBRUARY 21, 1996

Compared to last Monday: Feeder steers 2.00-3.00 lower; feeder heifers 1.00-2.00 lower. Steer and heifer calves steady to 1.00 lower. Demand moderate for feeders with best demand for heavier weights that require less time in feedlots. Feeder cattle in medium flesh. Demand moderate for stockers and calves. Grazing cattle in thin to medium flesh. Quality of supply average to attractive. Weigh-ups gaunt to mostly

average. Slaughter cows and bulls steady with exception of Cutter cows 1.00 higher. Packer demand only moderate with increased activity from northern buyers. Total of 365 cows and bulls sold with 80 percent to packers. Oklahoma wheat fields have received little to no moisture since October 2nd. Forecasters calling for 70 percent chance of good rains for this upcoming Monday, Feb 26th. Receipts this week 10,650; last week 13,179; last year 19,616. Supply consisted of 73 percent yearlings and few calves over 600 lbs; 24 percent calves under 600 lbs; 3 percent cows and bulls. Prices follow with weighted average weight and price in parenthesis. Feeder Steers: Medium and Large 1 few 300-400 lbs (350 lbs) 65.00-71.00 (68.85); 400-500 lbs (450 lbs) 62.75-69.00 (66.10); 500-600 lbs (550 lbs) 59.00-64.75, few thin 65.75-66.50, several slightly fleshy 56.75-59.50 (62.37); 600-650 lb calves (611 lbs) 57.00-60.00 (58.68); 600-700 lb yearlings (650 lbs) 56.00-61.50 (58.25); 700-750 lbs (727 lbs) 56.25-58.00 (57.24); 750-800 lbs (777 lbs) 56.00-59.25 (57.72); 800-850 lbs (831 lbs) 55.50-58.75 (57.47); 850-900 lbs (879 lbs) 54.00-57.75 (56.25); 900-1000 lbs (950 lbs) 53.50-54.50 (54.09). Holstein: Large 2 500-600 lbs 35.00-36.25; 750-800 lbs 37.50-38.75; 850-900 lbs 34.00-37.50; 900-975 lbs 33.25-36.50. Feeder Heifers: Medium and Large 1 300-400 lbs (350 lbs) 51.50-58.00 (55.69); 400-500 lbs (450 lbs) 51.75-57.00 (54.89); 500-600 lbs (550 lbs) 52.00-55.75 (54.30); 600-700 lbs (650 lbs) 50.00-54.25 (52.94); 700-800 lbs (750 lbs) 51.50-55.75, mostly 53.00 up (54.04); 800-900 lbs (850 lbs) 49.25-52.25 (50.77). Slaughter Cows: Cutter, boning and breaking Utility, average dressing 31.50-34.00; high dressing 33.50-36.25; low dressing 28.50-31.50. Canner and low Cutter 25.00-28.50. Estimated dressed cost at Oklahoma National Stockyards: Cutters 70.70; Boning Utility 65.65; Breaking Utility 61.90; Cannery 67.10. Bulls 80.40, lighter weights 77.50. Slaughter Bulls: Yield Grade 1 1300-2150 lbs average dressing 43.75-46.50; high dressing 46.00-47.50; low dressing 40.00-44.00; 1100-1300 lbs 35.00-39.00. Replacement Cows: Pre-tested for bangs, pregnancy, and age: Medium and Large Frame 1: Average quality single head sales: Heifers 750-850 lbs 7 months bred 400.00-430.00, 3 months bred 325.00; 5-7 yr old 800-1100 lbs 4-7 months bred

300.00-360.00. Pairs: Medium and Large 1 5-6 yr old 950-1100 lb cow 200-300 lb calf avg quality 470.00-555.00; 8 yr old 850-1150 lb cow 100-200 lb calf avg quality 395.00-440.00.

Belleville Livestock

BELLEVILLE, PA
FEBRUARY 21, 1996

CATTLE 251... PDA... Supply included 112 in the Dairy sale... Compared with last week's sale... cows .50 to 2.00 lower.

STEERS: one Select 51.50. HOLSTEINS: few Select 39.50-44.00. HEIFERS: few Choice Yield Grade 3 & 4 1040/1180 lbs. 51.75-54.00, couple Choice Holsteins 48.25 & 48.75.

COWS: Breaking Utility and Commercial 33.50-35.25, Cutter and Boning Utility 29.50-32.75, Canner and Low Cutter 24.75-28.25. Shells down to 22.25.

BULLS: couple Yield Grade No. 1 1740/1815 lbs. 39.00 & 46.00, few No. 2 910/1360 lbs. 25.75-32.50.

FEEDER CATTLE: STEERS: few Medium Frame No. 1 250/750 lbs. 40.00-53.00, few Large Frame No. 2 300/520 lbs. 29.50-38.00; HEIFERS: few Medium Frame No. 1 400/640 lbs. 35.50-47.00.

CALVES 103... VEALERS: one Choice 70.00, Standard and Good 75/105 lbs. 33.00-35.00, Utility 55/85 lbs. 20.00-29.00.

FARM CALVES: No. 1 Holstein bulls 90/125 lbs. 62.50-87.50, No. 2 80/110 lbs. 35.00-60.00; few No. 2 Holstein heifers 75/80 lbs. 30.00-55.00.

HOGS 39... BARROWS AND GILTS: few lots US 1-2 240/250 lbs. 46.50-47.25, lot US 1-3 270 lbs. 41.25, lot 205 lbs. 38.50.

SOWS: few US 1-3 350/660 lbs. 34.00-36.50.

BOARS: few 25.00-26.25. FEEDER PIGS 140... US 1-3 25/35 lbs. 12.00-17.00, 40/50 lbs. 21.00-30.00, few lots 80/130 lbs. 32.00-45.00. --- per head.

SHEEP 10... SLAUGHTER LAMBS: few Choice 60/125 lbs. 75.00-90.00.

SLAUGHTER SHEEP: few 19.00-50.00.

GOATS 9... Few Large 56.00-74.00, few Medium 35.00-42.00, one Small Kid 33.00. --- per head.

HOLSTEIN DAIRY COWS \$550.00-\$1150.00. --- per head.

Forney Longenecker

Vice President/Financial Consultant
Commodities

SMITH BARNEY 717-295-8914
800-441-1997

A Member of *TravelersGroup*

SMITH BARNEY INC.
29 East King Street
Suite 200
Lancaster, PA 17602-2852

PARADISE TRUCKING

Trucking available for type 41
Tobacco. Also general hauling.

Small and large closed vans
available.

CALL MITCH AT 717-687-0990

MILLER PRO
Sprayers that
level the field.

Patented Field Cushion™ eliminates boom shock.

Every MILLER PRO sprayer boom is protected with an exclusive, patented suspension system. So, even in the roughest field, these booms stay level. MILLER PRO makes crop sprayers for every need, with 7 trailer models including single & tandem axles, big-wheel options, truck-mounted, 3-point and saddle mount sprayers, and incorporation kits.

Features & Accessories • Hydraulic or Manual Fold Booms • Individual forward fold and wing tilt • In-cab electronic control • Chemical inductor • Clean water tank • Triplet nozzles • Self-cleaning filter • Fine kit • Foam marker • Bottom fill kit • Constant pressure return to operating position • Built with strength and stability to withstand years of stress

It's time to take a NEW look at MILLER PRO for...

PROfitable, PROductive & PROfessional Performance

Miller-St Nazianz, Inc
St Nazianz, WI 54232-0127
Toll Free 1-800-247-5557

New Grad Sow & Boar Sale
March 1, 1996
(2nd day of month)



Receiving Market Hogs Every Wed.
Sale - 2 PM (Live) / 2:30 PM Large Lots (Tele-Auction)

Sows & Boars Sold in 1/2 Hour Increments
Problem Animals Sold Separately

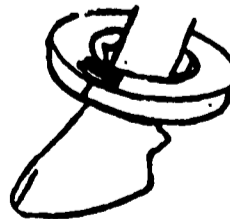
WALTER M. UNLAP & SONS
Lancaster Stockyards
317-5136

* Receiving Market Hogs Every Wed.

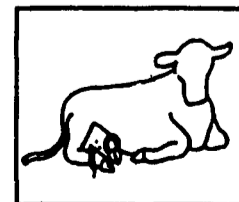
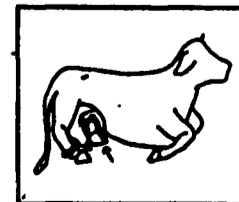
THE END OF TEAT INJURY

"NO SECRETS"

The "TEAT SAVER"
pushes the udder & teat away from
the dew claw. Apply two weeks prior
to freshening.



This product can be purchased at your local Farm Stores or Feed Mills or by contacting your local animal health centers.



DEALER
INQUIRIES
WELCOME!

The "TEATSAVER" supplied by
J.B. Supply Ltd.
Chetek Wisconsin 54728
For Information Phone 1-800-535-8271