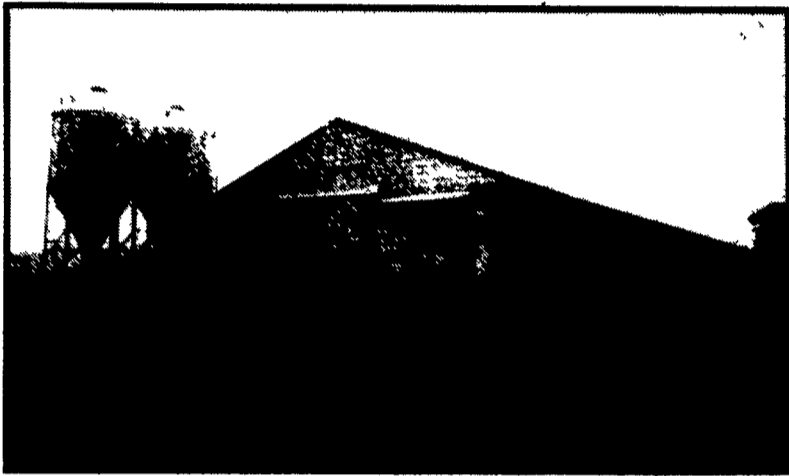


# Thanks and Congratulations

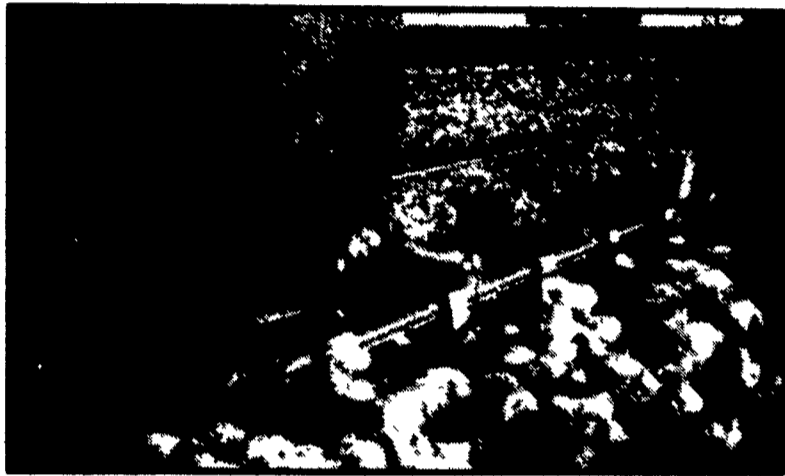
## Andrew and Melaine Reich Windfield, Snyder Co., PA on their all new 50'x400' Broiler House

Featuring **CHORE-TIME** Feeding and **HH** **Hired Hand Controls**

**Northeast  
agri  
systems**



50'x400' Curtain Sided Broiler House

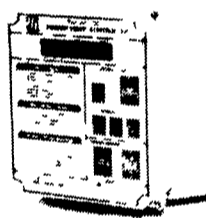


Chore-Time® C2 feeders with exclusive chick starting windows which automatically flood pans.

**HH** **POWER VENT**  
Electronic Static Pressure Controller

Set and maintain the perfect static pressure regardless of incoming air temperature!

The System 1000 POWER VENT operates on a set point like a thermostat instead of the high/low range like the old photohelic. It will allow the user to set a static pressure that can automatically adjust itself according to incoming air temperature. The POWER VENT has the same user friendly look and menu driven programming as the System 2000 Family.



**Features**

- ✓ 100% Solid State - eliminates photohelic
- ✓ New Electronic Sensor
- ✓ Ramping
- ✓ Settable differential
- ✓ Built-in surge protection
- ✓ Overpressure Alarm warns of dangerously high pressure
- ✓ Fan Timer Cycle Alarm provides independent monitoring of Timer Fans
- ✓ Daily synchronizing of dual power vents
- ✓ Automatic pressure adjustment based on outside temperature - maximizes ventilation efficiency

**HH** **PowerTrak**  
Automatic System for Curtains, Vents and Doors

A new standard in Power-Units is set with the introduction of PowerTrak™, the second generation of super-strength power pulley systems from Hired-Hand.

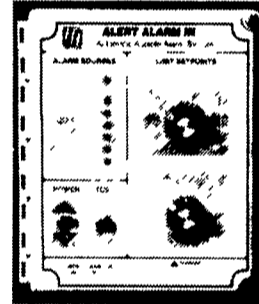
Completely redesigned with service in mind, PowerTrak boasts many new performance and durability enhancing features while maintaining the strong points of its popular predecessors, Power Curtain and Power Vent.

**Features**

- ✓ Modular construction for ease of service
- ✓ 5000 lb Capacity
- ✓ Built in Head Bracket with needle-bearing pulleys
- ✓ Channel Lock Trak Drive system captures load block
- ✓ 15 percent increase in load block support surface for greater life
- ✓ New easy-adjust springcam limit switch system
- ✓ New convenient hinged springlock door that is easily removed
- ✓ Greater protection from the elements

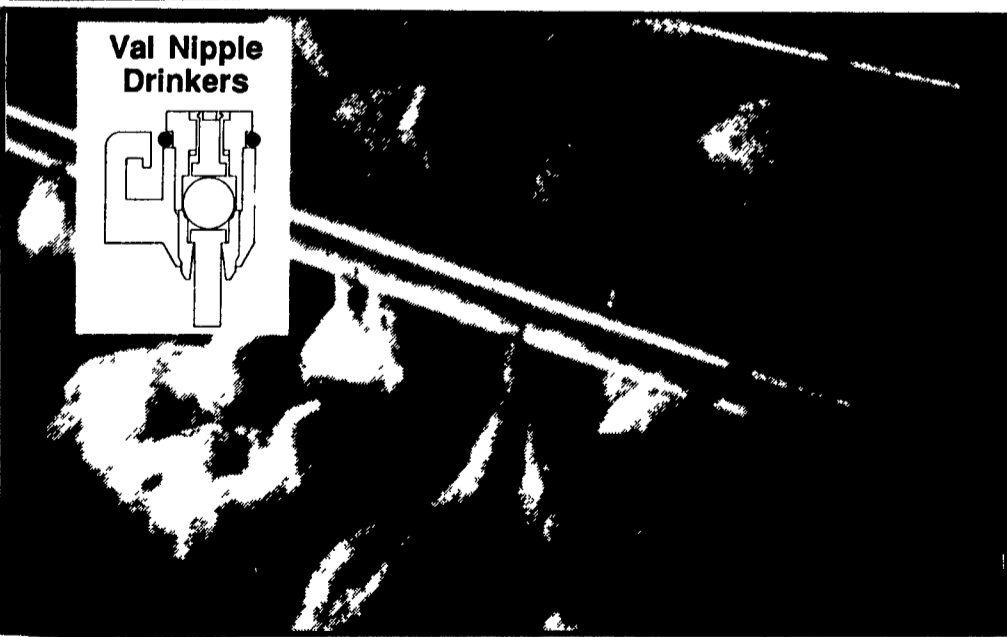
**HH** **ALERT ALARM III**  
Automatic Audible Alarm System

Alert Alarm III senses temperature in two zones or buildings plus warns you of power failures and has two auxiliary alarm inputs for other areas of control (water, curtain drops, etc.)



**Features**

- ✓ Easy-to-set Controls
- ✓ Large readable dials and alarm displays
- ✓ Low Battery Warning
- ✓ Siren type Alarm - 112 decibels at 10 feet
- ✓ 12 Volt Battery and Charger
- ✓ System designed for 230 volt power source
- ✓ Warning LEDs display problem areas
- ✓ Relays for Curtain Drops and Phone Dials
- ✓ 200 ft., 16 Gauge Lamp Cord



Val Nipple Drinkers

**HH** **SUPER SAVER XL**  
Agricultural Inside Mount Heater for Poultry and Livestock Confinement Buildings

The Super Saver XL is a highly efficient direct fired gas circulating heater designed for suspension mounting in houses of all ages and classes of poultry and livestock.

New side swinging door design gives easy access to internal cabinet with the new Service Saver control unit and powerful blower motor.



**Electronic HSI Ignition**

HSI ignition stands out on Super Saver. Components are neatly arranged with ample room for servicing and cleaning. The heating chamber is built of high temp. stainless steel which provides superior rust protection. The cast iron burner is flame dipped to minimize dust adhesion and heat. Surround air intake increases combustion and heat chamber efficiency. Look for this important feature on other heaters of this type.

Modular control panel and quick disconnect wiring harness make field service a snap!

New duct features user adjustable heat deflector designed to suit individual needs.

**Features**

- ✓ Easy-access electrical control unit
- ✓ Quick-disconnect wiring harness for easy service; gold plated contacts prevent corrosion
- ✓ Diagnostic light for troubleshooting ease
- ✓ Electronic hot surface instant on ignition
- ✓ 225,000 BTU LP or natural gas
- ✓ Available in Stainless Steel or Galva Zinc finish
- ✓ Duct with user adjustable heat deflector
- ✓ High Temp aluminum burn chamber and blower housing
- ✓ Remote thermostat with piggyback cord set for easy installation
- ✓ 1/3 HP totally enclosed thermally protected motor with sealed ball bearings
- ✓ Manual reset high temp limit switch
- ✓ Backup safety seal switch

**CONTRACTS AVAILABLE FOR Turkeys - Broilers - Hogs**  
Call our Toll Free Number 1-800-673-2580

Equipment By

**Northeast  
agri  
systems**

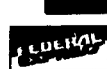
Northeast Agri Systems, Inc.

Flyway Business Park  
139A West Airport Road  
Lititz, PA 17543

Ph: (717) 569-2702

1-800-673-2580

Store hours Mon -Fri 7:30 to 4:30  
Sat 8:00 to Noon  
24 Hr 7 Day Repair Service



**Clark's  
Feed Mills, Inc.**  
P.O. Box W ■ Route 61 North  
■ Shamokin, PA 17872  
Phone: (717) 648-4351

CHORE-TIME

5000 S. 10th St.  
PO BOX 100  
LITITZ, PA 17543