



HOG MARKETS

New Holland Feeder Pigs

New Holland, PA
Wed., February 21, 1996
Report Supplied by USDA
TODAY: 559

LAST WEDNESDAY: 345
WAST YEAR: 1440 HEAD
COMPARED TO LAST WEDNESDAY, FEEDER PIGS FIRM TO 5.00 HIGHER. ALL PIGS WEIGHED ON ARRIVAL AND SOLD BY THE HUNDRED WEIGHT.

US#1-2: 8 HEAD 31-37 LBS. 80.00-84.00, WEIGHTED AVERAGE 34.00, WEIGHTED PRICE 81.82; 71 HEAD 42-49 LBS. 72.00-81.00, WEIGHTED AVERAGE 43.73, WEIGHTED PRICE 77.74; 89 HEAD 50-58 LBS. 62.00-76.00, WEIGHTED AVERAGE 51.69, WEIGHTED PRICE 72.66; 40 HEAD 60-61 LBS. 63.00-64.00, WEIGHTED AVERAGE 60.45, WEIGHTED PRICE 63.55.

US#2: 39 HEAD 41-49 LBS. 70.00, WEIGHTED AVERAGE 42.64, WEIGHTED PRICE 70.00; 15 HEAD 56 LBS. 68.00, WEIGHTED AVERAGE 56.00, WEIGHTED PRICE 68.00.

US#2-3: 5 HEAD 33-37 LBS. 67.00-68.00, WEIGHTED AVERAGE 34.60, WEIGHTED PRICE 67.43; 7 HEAD 55 LBS. 52.00, WEIGHTED AVERAGE 55.00, WEIGHTED PRICE 52.00; 5 HEAD 73 LBS. 32.00, WEIGHTED AVERAGE 73.00, WEIGHTED PRICE 32.00.

SLAUGHTER: 87 HEAD 22-34 LBS. 110.00-130.00, WEIGHTED AVERAGE 27.75, WEIGHTED PRICE 120.48.

ALL PIGS CONSIGNED TO WEDNESDAY FEEDER PIG SALE MUST ORIGINATE FROM A QUALIFIED NEGATIVE OR MONITORED HERD.

Middleburg Hog Report

Middleburg, Pa.
February 19 & 20, 1996
Report supplied by PDA

393 HEAD. BULK OF SUPPLY SOLD ON MONDAY AND REPORTED BY AUCTION. BARROWS AND GILTS STEADY.

BARROWS AND GILTS: US#1&2 225-260 LBS. 48.00-49.00; US#1&3 220-265 LBS. 47.00-48.00.

SOWS: US#1&3 300-400 LBS. 32.00-38.50, 480-550 LBS. 33.00-35.00.

BOARS: ALL WEIGHTS, 25.00-28.50.

Indiana Hogs

SPRINGFIELD, IL
FEBRUARY 22, 1996

Barrows and Gilts: Mostly .50 Lower. Demand light to

moderate on a moderate supply. Country Plants US 1-3 230-260 lbs. 45.00-46.50 Few 47.00 46.00-48.00 2-3 230-260 lbs. 40.00-45.00 210-230 lbs. 36.00-40.00

Sows: .50-1.00 Lower. US 1-3 300-500 lbs. 28.00-32.00 500-650 lbs. 32.00-34.00

Boars: 26.00-27.00 Preliminary estimate: 41.000

Hatfield Direct

Hatfield, Pa.
Reports Supplied by Packer
For Monday, February 19, 1996
And Wednesday, February 21, 1996
MONDAY

TOTAL HOGS: NO KILL.
LAST WEEK: 6490
TREND: COMPARED TO LAST MONDAY: .50 HIGHER.

55.5%-56.4% 216-269 LBS.: BASE: 48.17.

56.5%-58.4% 216-269 LBS.: 48.97-49.78.

58.5%-60.4% 216-269 LBS.: 50.59-51.39.

FEW 216-269 LBS.: 52.20.

GOOD'S RECEIVING

MONDAY: CASH 47.25.

WEDNESDAY

TOTAL HOGS: 7352.

LAST WEEK: 6500.

TREND: COMPARED TO LAST WEDNESDAY: .67 LOWER.

55.5%-56.4% 216-269 LBS.: BASE: 48.00.

56.5%-58.4% 216-269 LBS.: 48.80-49.61.

58.5%-60.4% 216-269 LBS.: 50.42-51.22.

FEW 216-269 LBS.: 52.03.

GOOD'S RECEIVING

WEDNESDAY: NO SALE.

New Holland Hogs

LANCASTER, PA
FEBRUARY 19, 1996

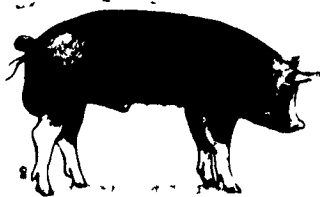
TODAY 1099

LAST MONDAY 1522

LAST YEAR 1622

TREND: Compared to last Monday barrows and gilts steady, instances 50 higher.

BARROWS AND GILTS: US 1-2 220-260 lbs 48.00-49.00 US 1 220-250 lbs 49.00-49.50 US 1-3 220-260 lbs 47.50-48.00 260-280 lbs 46.50-47.50



KIRKWOOD HAY AUCTION

Hay, Straw and Grain Auction
EVERY TUESDAY
11:00

Located Rt. 472.5 miles south of Quarryville or 6 miles north of Oxford corner of Rt. 472 and Noble Road.
Lloyd H. Kreider, Auctioneer
AU-000513L
No out of state checks

Good's Hay

Leola, Pa.
Wed., February 21, 1996
Report Supplied by Auction

TOTAL LOADS: 83.

ALFALFA: 105.00-152.00.

MIXED HAY: 65.00-165.00.

STRAW: 68.00-80.00.

TIMOTHY: 100.00-132.00.

GRASS: 100.00-140.00.

OATS: 2.75-2.80 BU.

CORN: 125.00.

CLOVER: 110.00.

Middleburg Hay

Middleburg, PA
Tues., February 20, 1996
Report supplied by PDA

131 LOADS. 71 LOADS OF HAY.

ALFALFA: 18 LOADS, 85.00-160.00.

MIXED HAY: 43 LOADS, 60.00-145.00.

TIMOTHY: 5 LOADS, 82.50-105.00.

CLOVER: 3 LOADS, 65.00-102.50.

BROME GRASS: 2 LOADS, 57.50 AND 95.00.

STRAW: 22 LOADS, 40.00-67.50.

BAR CORN: 18 LOADS, 110.00-137.50.

BARLEY: 1 LOT AT 2.85 BU.

OATS: 10 LOTS, 2.20-2.70 BU.

Dewart Hay

Dewart, PA.
Monday, February 19, 1996
Report Supplied by Auction

24 LOADS OF HAY, 55.00-125.00.

STRAW: 16 LOADS, 39.00-56.00.

WOOD: 17 LOADS, 37.00-100.00 LOAD.

CORN: 17 LOADS, 85.00-107.00.

OATS: 5 LOADS, 2.00-2.15 BU.

Belleville Hay

Thursday, February 21
Belleville, PA
Report Supplied by Auction

TIMOTHY: 2 LOADS, 87.50 AND 100.00.

ALFALFA: 17 LOADS, 60.00-130.00.

MIXED HAY: 32 LOADS, 40.00-132.50.

CORN: 7 LOADS, 60.00-117.50.

STRAW: 42.50-65.00.

Diffenbach Auction Center

New Holland, Pa.
Monday, February 19, 1996
Report Supplied by Auction

TOTAL LOADS: 259.

ALFALFA: 65.00-155.00.

MIXED HAY: 67.00-165.00.

TIMOTHY: 72.00-147.00.

CLOVER: 92.00.

ORCHARDGRASS: 95.00-120.00.

STRAW: 55.00-90.00.

BAR CORN: 116.00-130.00.

CORN FODDER: 67.00.

OATS: 2.75-2.95.

FIREWOOD: 35.00-105.00 LOAD.

Green Dragon Hay

Ephrata, Pa.
Friday, Feb. 16, 1996
Report Supplied by Auction

137 TOTAL LOADS.

MIXED HAY: 52 LOADS, 45.00-152.00.

ALFALFA: 25 LOADS, 68.00-140.00.

TIMOTHY: 12 LOADS, 96.00-180.00.

STRAW: 28 LOADS, 50.00-74.00.

EAR CORN: 5 LOADS, 117.00-127.00.

ORCHARD GRASS: 5 LOADS, 82.00-127.00.

CLOVER: 99.00.

OATS: 2.25-2.50 BU.

STUBBLE HAY: 79.00.

WOOD: 42.00-60.00.

Leinbach's Hay

Shippensburg, PA
February 17 and 20
Report Supplied by Auction

116 LOADS.

ALFALFA: 2ND AND 3RD CUTTING 80.00-138.00, 1ST CUTTING 70.00-88.00.

MIXED HAY: 63.00-108.00.

TIMOTHY: 64.00-125.00.

CLOVER: 58.00-92.00.

BROME GRASS: 72.00-100.00.

ORCHARD GRASS: 52.00-116.00.

STRAW: 42.00-70.00.

EAR CORN: 120.00-122.00.

FIREWOOD: 32.00-66.00.

The Windmill

Penn Yan, N.Y.
Friday, February 16, 1996
Report Supplied by Auction

LOADS: 26.

ALFALFA: 1ST CUTTING 67.00-71.00, 1.25 BALE, 22.00 LARGE ROUND BALE; 2ND CUTTING 57.00-82.00; 3RD CUTTING 90.00.

MIXED HAY: 1ST CUTTING 57.00-75.00, 2ND CUTTING 55.00-75.00, .85-1.20 BALE.

CLOVER MIX: 37.00-82.00.

WHEAT STRAW: 69.00-72.00, 16.00 LARGE ROUND BALE.

STRAW: 1.00-1.10 BALE.

Regional Hay

February 20, 1996
Eastern, Pa.

HAY & STRAW MARKET FOR EASTERN PA - (ALL HAY NO. 2 AND BETTER. PRICES PAID BY DEALERS AT THE FARM & PER TON.) HAY STEADY, STRAW STEADY TO WEAK.

ALFALFA 80.00-120.00; MIXED HAY 70.00-105.00 FEW REPORTED 120.00; TIMOTHY 70.00-120.00; STRAW 55.00-75.00 FEW REPORTED 90.00; MULCH 25.00-45.00.

SUMMARY OF LANCASTER CO. HAY AUCTIONS FOR WEEK ENDING 02/16/96. PRICES PER TON: LOADS: 424 HAY, 135 STRAW & 14 EAR CORN.

ALFALFA 86.00-156.00; MIXED HAY 70.00-158.00; TIMOTHY 77.00-150.00; STRAW 50.00-90.00; EAR CORN 115.00-127.00.

SUMMARY OF CENTRAL PA. HAY AUCTIONS FOR WEEK ENDING 02/16/96. PRICES PER TON: LOADS: 343 HAY, 82 STRAW & 53 EAR CORN.

ALFALFA 75.00-147.50; MIXED HAY 60.00-130.00; TIMOTHY 65.00-105.00; STRAW 48.00-85.00; EAR CORN 100.00-126.00.

Vintage Hay

Paradise, PA
Thurs., February 22, 1996
Report Supplied by Auction

ALFALFA: 77.00-134.00.

MIXED HAY: 79.00-155.00.

CLOVER: 117.00.

TIMOTHY: 167.00.

GRASS: 77.00-132.00.

STRAW: 60.00-83.00.

38 LOADS TOTAL.

SALE TIME 1 P.M., BUT STARTING FEB. 15 SALE TIME WILL BE 12 NOON.

North Jersey Market

Hackettstown, N.J.
Report Supplied by Auction
Tuesday, February 20, 1996

Hay—Straw & Grain Report

ALFALFA: 2 LOTS, 1.70 BALE.

MULCH HAY: 2 LOTS, .25-.40 BALE.

MIXED HAY: 3 LOTS, 1.00-2.30 BALE.

TIMOTHY: 5 LOTS, 1.80-2.50 BALE.

GRASS: 4 LOTS, 1.25-2.40 BALE.

WHEAT STRAW: 1 LOT, 1.20 BALE.

BARLEY STRAW: 4 LOTS, 1.25 BALE.

GROUND CORN: 2 LOTS, 4.00 AND 7.00 BAG.

FIREWOOD: 1 LOAD AT 30.00.

24 LOTS TOTAL.



WALTER M. DUNLAP & SONS

Lancaster Stockyard
1147 Lititz, Pike, Lancaster, PA 717-397-5136

OFFER ALL CATTLE & HOG FEEDERS TWO MARKETING DAYS

Monday

9 AM: Goats, Slaughter Calves, Sheep/Lamb Small Calves

9:30 AM: Bulls, Heifers, Steers, Cows

1 PM: Hog

Wednesday

6 AM-NOON Hog Receiving

11 AM: Slaughter Cattle

1 PM: Feeder Cattle

PENNFIELD GRAIN BANK

Pennfield Offers A Sound Program For The Dairy Farmer To Use His Grain "Same As Cash" To Reduce His Monthly Feed Bill And To Avoid Having To Take "Harvest Price" For His Grain

Prices Week Of 02/26/96

Corn \$4.19 Bu.

Soybeans \$7.55 Bu.

Barley \$3.35 Bu.

• No Storage Charges

• Prices Updated Weekly

• Grain Bank Balance Shown On Each Invoice

• No Hidden Charges

For every ton of qualifying dairy feed purchased you will receive one ton of grain back hauled at no charge

Call 1-800-742-0167

penncfield feeds

INDEX

Four Sections

DAIRY

DHIA Focus..... A22
Top Pa. Herds..... D 2

HOME AND YOUTH

Homestead Notes..... B 2
Home On The Range..... B 6
Farm Women..... B7
Cook's Question Corner..... B 8
You Ask, You Answer..... B15
Kid's Korner..... B10
4-H Happenings..... B16

FEATURES

Vegetable Day..... A20
USDA Team Award..... A21
Corestates Seminar..... A28
Lewis Receives Award..... A29
Miller Farm..... B 2
T-Shirt Design..... B10
Woman Finds Solutions..... B12
Paper Cutting..... B14

COLUMNS

Now is the Time..... A10
Grazing Gazette..... A23
On Being A Farm Wife..... B 3
Ida's Notebook..... B16
All Gardens..... B 5
Taking Time..... B 7
Family Living Focus..... B17
Beef Briefs..... C 2
Livestock Ledger..... C 4

DEPARTMENTS

Editorial..... A10
Farm Calendar..... A10
Farm Forum..... A10
Futures..... A16
Mailbox Markets..... B19
Sale Reports..... B23
Public Auction Register..... B24
Business News..... C 6
Classified Ads..... C 8, D 5