

Best Buys in Used Equipment

USED TRACTORS

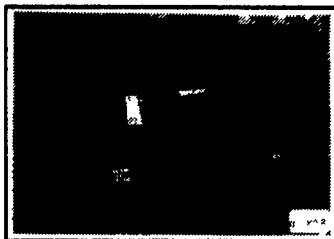
UNDER 80 HP



CIH 585 2WD Tractor w/2250 Loader, 1990 Yr., 1360 Hrs., New 18.4x30 Tires For/Rev Block Heater (W1014)



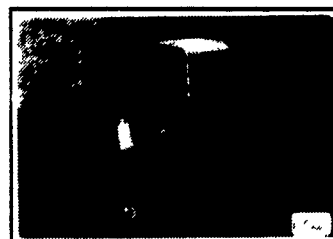
CIH 885 2WD Tractor, Cab w/AC, Heat, 1987 Yr., Deluxe Seat, Power Shift, 18.4x30 Tires, 2 Hyd. Valves w/2255 Loader w/84" Bucket (W9807)



IH 656 Tractor, 1967 Yr., 5428 Hrs., 3 Pt. Hitch, 2 Valves (W9823)

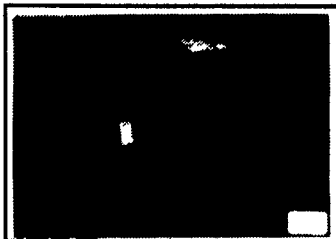


IH 1066 Tractor 1972 Yr., 6600 Hrs., 3 Pt. Hitch (9307)



IH 186 Hydro Tractor, 1976 Yr., 1900 Hrs. (W9953)

130 TO 200 HP



IH 1086 Tractor 1976 Yr., 20.8-38, 2 Hyd. Valves, 540/100) PTO, Cab w/AC, Heat, Radio (W9190)



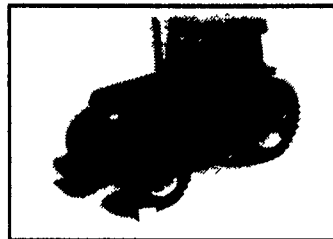
Case 32 **SOLD** 1985 Yr., 3366 Hrs. (8904)



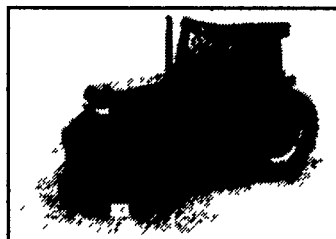
IH 1086 **SOLD**, Reman. Engine, New IA (W9801)



IH 5488 Tractor, 1982 Yr. 20.8x38 w/Duals, 5340 Hrs. w/Rebuilt Eng. (W9229)



CIH 7140 MFD Tractor, 1991 Yr., 1025 Hrs. 3 Hyd. Valves, 18 Wts. 20.8x42 Tires 75%, 20.8x42 Duals, 1000 PTO, Warr to 5-96 (W9740)



CIH 7120 MFD Tractor, 1991 Yr., 1260 Hrs., 18.4x42 Tires Rear, 14.9x30 Tires Front, 4 Valves, 3 Pt. Hitch, 18 Wts. AM/FM Radio (W9742)



JD 7800 MFD Tractor, 1995 Yr. 220 Hrs., 18.4 **SOLD** 14.9x30 Ft. Tires, 3 H Speed Trans, 540/1000 PTO, 3 Pt. Hitch, AM/FM Radio (W9980)



CIH 9270 Tractor, 1991 Yr., 1857 Hrs., 20.8x42 Tires, Duals, 4 Valves (7824)

OVER 200 HP

- IH 1086 Tractor, 4988 Hrs., 20.8x38 Tires, 2 Hyd Valves, Cab w/Heat & AC, 3 pt., 540/1000 RPM, T/A, w/2350 Loader (W1157)
- IH 1486 Tractor, 3319 Hrs., 20.8x38 Tires, WFE, 540/1000 RPM, Cab w/Air-Heat (W9626)
- IH 1566 Tractor, 161 HP, 20.8x38 Tires, 3PT, Cab, 2 Hyd Valves (W8757)
- IH 1566 Tractor, 1976 Yr., 4591 Hrs., 20.8x38 Tires, WFE, 1000 RPM, 3 Pt (W9045)
- IH 1586 Tractor, 3454 Hrs., 20.8x38 Duals, Cab, WFE, Radio, 3 Pt (W9334)
- IH 504D Tractor, 15.5x38 Tires, WFE (W1121)
- IH 966 Tractor, 1971 Yr., 5870 Hrs., 18.4x38 Tires, 2 Hyd. Valves, Cab w/ Heat (W1115)
- IH 986 Tractor, 3800 Hrs., 18.4x38 Rear, 3 Sets of Rear Wts. (W9335)
- IH 826 Hydro Tractor (JB/MGF)
- IH 3588 2+2 4WD Tractor, 5100 Hrs., 18.4x38-DT 710 (W9968)
- Case 1370 Tractor (W8947)
- Hesston 60-66 2WD, WFE, 540 PTO, 3 Cyl., 16.9x30 Rear Tires, Canopy (W8350)
- Steiger PT225 Tractor, 1977 Yr., 4434 Hrs., 30.5L-32 Tires, 3 Hyd. Valves, Heat/AC, 3 Pt., Quick Hitch (W9975)

USED COMBINES

- IH 1460 Combine, 1979 Yr, 4500 Hrs. (U1160)
- IH 1440 Combine, 1979 Yr. 5875 Hrs., 28Lx26 Tires FT, 18.4x16.1 Tires RR, AHC AM/FM (U9518)
- IH 1440 Combine, 1979 Yr. (U9712)
- IH 1460 Combine, 1979 Yr., 7036 Hrs., Speciality Rotor, AHHC, Feeder Cut Off, AM/FM Radio (U9036)
- IH 1460 Combine, 1982 Yr., 2100 Hrs. (U9997)
- IH 1440 Combine, Mechanics Special, As Is (U9141)
- IH 1440 Combine, 1978, 3400 Hrs. (U9942)
- IH 1480 Combines, 1985, 5000 Hrs., Spec. Rotor (U1001)
- IH 1460 Combine, 1981 Yr., 3250 Hrs. (U1135)
- CIH 1660 Combine, 1990 Yr., 1800 Hrs. (U1159)
- CIH 1660 Combine, 1991 Yr., 1640 Hrs., 24.5x32 Tires, Radio, Fld Trkr., Spec. Rotor, Rock Trap, AHC, Reel To Ground, Feeder-Rev (U1071)
- CIH 1680 Combine, 1989 Yr., 30.5x32 Hrs., Spec. Rotor, Rock Trap, AHHC, Monitor, Fore & Aft Reel, Radio (U1076)
- CIH 1680 Combine, 1981 Yr., 1684 Hrs., Speciality Rotor, Rock Trap, Feeder Rev. Monitor, AHC, Reel To Ground Fore/Aft, 2 Speed Hydro 4WD (U9617)
- CIH 1680 Combine, 1987 Yr., 4700 Hrs., 30.5x32 Tires FT, 18.4x16.1 Tires RR, Feeder Rev Monitor, AHC, Reel to Gr., Hyd. For/Aft, AM/FM (U9060)
- CIH 1688 Combine, 1993 Yr., 1011 Hrs., 30.5x32 Tires, Deluxe Seat, 2 Spd. Hydro, 3 Rd. Cyl. Field Tracker, Speciality Rotor, Feeder Rev & Cut Off, Hyd. Reel For/Aft, Rock Trap, AHHC (U9924)
- CIH 1660 Combine, 1986, 2WD, 24.5x32 Tires, Chaff Sprdr., 3 rd Cyl., Feeder-Reverser, Spec. Rotor, Monitor, Rock Trap, AHC (U9879)
- JD 7700 Combined, 1977 Yr., 4000 Hrs., Hydro, 23.1x26 Tires, AC/Heat (U9639)
- JD 6600 Combine, 1976 Yr., Hydro (U9922)
- JD 7720 Combine, 2WD, 1980, 2700 Hrs. 24.5x32 Tires, Heat/AC, w/2 platforms (U9841)
- JD 7720 Combine, 1982, 2440 Hrs., Feeder-Reverser, Rock Trap, AHC (U1039)

- JD 6600 Combine 1977, 3041 Hrs., Sidehill, 23.1x26 Tires (U9764)
- IH 915 Combine, 1977 Yr., 3500 Hrs. (10039)
- IH 915 Combine, 1977 Yr., 3700 Hrs., AHC (U9760)
- AC L2 Combine, 1978, Hydro, Chopper, Monitor, Rock Trap, AHC, Cab W/ Heat (U1043)
- AC N5 Combine, 1982 Yr., 30.5x32 Tires, Radio, Chopper, Monitor, Rock Trap, AHC (U1047)
- Gleaner M3 Combine, 1984 Yr., 2000 Hrs., AM/FM Radio, AHHC (U9914)
- MF 550 Combine 4R Wide Cornhead, 13' Platform (U9184)
- MF 5' 10 Combine, w/13' PF Price \$3,500 (U9898)
- MF 510 Combine, 1969, Diesel Eng. w/4RN (U9126)

USED TILLAGE

- DISCS**
- JD 235 Disc, 21', 9" Spacing (T1027)
- Krause 1927 Disc, 25', Rockflex, Center Duals (T1105)
- Krause 2242 Disc (T1164)
- Krause 2410 Disc (T1111)
- Krause 2413 Disc, 23', Scrapers, Packer Hitch & Hoses (T9293)
- Krause 2416 Disc, 26' (T5858)
- Krause 4912 Disc, 18' (T9138)
- Krause 4927 Disc, 25' Rockflex (T9456)
- Krause 4927 Disc 25' (T9598)
- Krause 1927 Rockflex Disc, 25' Cut Width, 22" New Blades, 9" Spacing, New Paint (T8222)
- Krause 2413 Rockflex Disc, 23' Cut Width, H.D. Cutting Disc, 10" Blade (T9552)
- Krause 1497 Offset Disc, 12' Cut, Standard Gangs, Dual Tires, 9" Spacing, New Blades (T9983)
- Krause 2413 Disc Rockflex, 23' Cut, 24" Blades, Rebuilt & Painted (T9817)
- Sunflower 1232 - 21' Disc (T1123)
- FIELD CULTIVATORS**
- Krause 4133 Field Cultivator, K-Tines (T6863)
- White Field Cult. 24' Wide, w/Buster Bar, Hyd. Fold (T8614)
- CHISEL PLOWS**
- Krause 4320 17 Shank Chisel Plow, center duals (T1106)
- JD 712 Chisel Plows, Rockflex, 9" Spacing, Auto Reset Shanks, Cyl/Hoses, Scrapers (T1166)

OTHER

- IH 2x16" Rollover Plow, Spring Trip (T1122)
- IH 735 4 Bottom Plow, Cyl/Hoses, Vari-Width (T9800)
- IH 720 Plow 5-16" w/Coulters (T9527)
- IH 720 Plow, 5-18" w/Dtl. Hitch (T8769)
- JD 4 Bottom Plow, Hyd. Reset Coulters (10893)
- JD 2500 Auto-Reset Plow, 7-18" Bottoms, Coulters, On-Land Hitch (T6320)
- Krause 3124 Landsman, rear spikes, one-pc. K-Tine (T1182)
- Landoll Coulter Chisel 15 Shanks, Coulters, Hyd. Fold (T9558)
- IH #11 Subsoiler, 7 Sk. Coulters, Gauge Wheels (T9226)
- Brillion 27' X-Fold Packer, 20" Notched Rollers, Duals (T1108)
- Farm Hand 18' Packer, 18" Roller, s Dual Wheels, VG Cond. (T9714)
- IH 14 Subsoiler, 9 Shank, Gauge Wheels (T8267)
- IH 2 Shank Ripper, 3 Pt. Ripper (T9607)
- DMI 18' Crumbler (T8375)

USED HAY & FORAGE

- BALERS**
- NH 273 Baler, Super Sweep Pickup, Wisconsin Engine, Steel Wheels (U9967)
- CIH 8580 Big Baler 4x4x8 Bales, 1993 Yr (9938)
- Hesston 4800 Baler, Bale Size 4x4x8 (U9553)
- NH 268 Baler Steel Wheels, Less Engine, Super Sweep Pickup (U9977)
- NH 311 Baler & Thrower (U1081 & 82)
- JD 336 Baler (U9859)
- MOWER CONDITIONERS**
- CIH 8830 Mower Cond., 1994 Yr., 717 Hrs., 12' Head (F8718)
- CIH 8830 Mower Cond., 1994 Yr., 813 Hrs., 12' Head (F8721)
- IH 1490 Mower Conditioner, 12' Cut, Tigor Rolls, Hydro-Swing Hitch (U9857)
- Vicon KM321 Disc Mower Cond. 10 1/2' Cut (U9731)
- NH 479 Haybine, 9' Cut (U9955)
- NH 499 Haybine, 12' Cut, Hydro Swing, 3" Knife w/Guards (U7899)

MOWERS

- Rhino SR Batwing Mower, 15' Cut, 6 Laminated Tires, Hyd. Lift & Fold, 540 PTO (U9826)

- New Schulte 5026 Mower 26' Cut (S9533)
- JD 1508 Batwing Mower, 15' Cut, 1000 PTO, New Paint (V8509)
- New Rhino SR20 Mower Chain Guards Front & Rear (S7522)
- Woods 120 mower, 10' offset (U6970)

OTHER

- Bush Hog 20' Batwing 1000 PTO, Laminated Tires, Stump Jumper (V9289)
- IH 600 Blower, Reconditioned (U8214)
- CIH 8830 Windrower w/12' Auger Header (U9799)
- NH 28 Blower (U1137)

USED DRILLS & PLANTERS

PLANTERS

- NI Planter 11 Row Corn/Bean w/L.fq. Fert., 2-100 Gal. Tanks, Demco Pump (V9608)

GRAIN DRILLS

- GP 15' 3 Pt. Drill, 26x7, 13" DD Openers, 4" Press Wheels, 700 AC Use (V8486)
- GP 15' Drill, 3 Pt. Hitch, 26x7 DD Openers (V9436)
- Great Plains 24' Conv. Drill w/4x12 Press Wheels (V9719)
- Great Plains 14' Drill, No-Till, 7" Spacing w/Wt. Brackets, No-Till Hitch (V7978)
- GP 14' NT Drill w/CP Hitch (V8362)
- Haybuster 1206 NT Drill 11.5' Wide, 6" Spacing, 12" Blades, Cast Press Wheels, Hyd. Cyl & Hose (V9409)
- IH 510 Drill, 16x7 Grass Seed Fert Attachment (V9812)
- IH 5100 21x7 Drill, 7" Spacing w/Fert. (V9748)
- Krause 5213 Drill (V1169)
- Krause 5213 NT Drill 7.3" Spacing, 953 Ac, DD Openers 13" NT Couplers 14" 4" PW, Sm. Seed Attach (V9641)

All New & Used Products
Backed By
Hooper Parts & Service
(717)768-8231

HOOPER
C.B. HOOPER & SON INC.
INTERCOURSE, PA