

LEBANON COUNTY

118 acre Dairy and Chicken Farm located near Rt. 78. 2132 sq. ft. house. 60 free stall barn plus 50 free stall pole barn. 4 stall milking parlor. 1000 gallon milk tank, 20x60 and 16x60 Stave silo. Feed bunk. 44x312 breeder house with all the extras. Contract current and transferable. 75 acres tillable. #5057.

**CALL CENTURY 21
KRALL REAL ESTATE,
LEBANON
717-273-1631**

Dairy Farms in Morrisons Cove, Blair and Bedford County

- 145 AC. Dairy Farm, stanchion barn, other outbuildings, stream, 3 concrete silos, beautiful 2 1/2 story colonial home Ex. soil.
- 115 Ac. Dairy Farm w/stanchion barn, 2 concrete stave silo, pipeline, bulk tank, other outbuildings, 2 1/2 story home plus mobile home, \$365,000.
- 96 Ac. Dairy Farm, all tillable, 31 stanchions, spring, 2 1/2 story home, \$265,000
- 89 Ac. Dairy Farm w/Double Six Herring Bone Parlor, concrete stave silos, 2,000 gal. bulk tank, free stall barn, other outbuildings, 2 1/2 story home, highly productive soil.
- 115 Ac. Dairy Farm, w/98 stanchions, manure pit, concrete silos, 1500 gal. bulk tank, 2 1/2 story home, excellent location, excellent soil.
- 169 Ac. Dairy Farm, 155 Ac. tillable, 45 stanchions, 2 concrete stave silos, 5 outbuildings, well maintained 2 1/2 story home, trout stream, hard road frontage. Call for details.

**Century 21/Action Assoc.
Call Wes 814-944-1873**

PERRY COUNTY



Andersonberg/Blain Area, 105 Acres, all tillable, 4 BDR house, bank barn Additional land available

LITTLE NITTANY VALLEY



Centre Co./Bellefonte/Jacksonville area, 248 acres, 185 tillable Amish equipped dairy farm, 50 stanchions, double house, many other buildings.

BERKS COUNTY



170 acre dairy farm, home of champion Holsteins. Next to Industrial Park. Excellent investment opportunity.

CHESTER COUNTY



Compass area, 45 acre Amish equipped dairy farm. 38 acres tillable, 40 tie stall barn, 2 silos. Very good house and other buildings.

INDIANA COUNTY

1,100 acres, 550 tillable, 550 wooded One good house, several other buildings

OLEY VALLEY, BERKS COUNTY

158 acres along Rt. 662. Wonderful land, buildings in poor condition

NITTANY VALLEY

Price reduced - Owner bought farm. 13 ac. Amish farm, 10 ac. pasture, 40x80 store w/storage, 6 bedroom house. Horse barn & silo.

Call
**Hiram Hershey, Broker
Thomas Hershey, Realtor associate
HERSHEY FARM AGENCY, INC.
REALTORS
1-800-880-3831**

CENTRAL VIRGINIA: Farms and land available from 5 to 500 acres, reasonable prices, very low taxes, farmer friendly communities, agricultural economy, free catalog

**State Wide Realty Co.
Farmville, Virginia
804-392-6163**

**Farms & Rural Properties
Low Prices, Low Taxes, Free Catalog**

**THE REAL ESTATERS
OF MANSFIELD**

1671 S. Main St., Mansfield, PA 16933
(717) 662-2138 • Evening (717) 662-2363

PRIDE OF OWNERSHIP DAIRY FARM

Bradford County set up w/95+ tie stalls st. run back to back + 13 heifer and 5 box stalls. 2,000 gal. 2" S.S. pipeline. 20x40, 20x70 & 20x80 stave silo. 120x60x14 pole barn/shop/storage shed. Approx. 280 acres - 140 tillable. Beautiful 2 story, 4 bdrm, 1 1/2 bath home w/detached garage/shop/rec room. Extremely well priced at \$350,000. Second home available. M-605.

DAIRY FARM - OWNER TERMS

Near Jackson Summit, PA 104 head capacity in 3 rows. 68 back to back on pipeline. New easy working barn. 3 conc. stave silos w/unloaders. Approx. 180 acres w/150+ tillable. More bldgs, etc. + ranch home over full bsmt w/attached garage. \$269,900 w/\$79,900 down. \$190,000 at 9% int. 20 yrs, \$1,710 p/m. 5 yr. balloon. M-783.

TIOGA COUNTY DAIRY FARM

Near Mansfield, PA., 70+ on pipeline in 3 rows & 4th row for young stock. 2 barn cleaners feed 1 yr. manure pond, 1,000 gallon tank, portion of snow damaged roof needs \$15,000 replacement. 4 bdrm. home, approx. \$90,000 existing FmHA mortgage. Just \$99,900 M-530

APPROX. 100 HEAD DAIRY FARM

Near Mansfield in Tioga County, PA. 66 tie stalls back-to-back + box stalls & holding area for heifers. Pipeline, 1,500 gal. tank, & 4 silos. 222.48 surveyed acres. (Approx. 150 tillable). Totally remodeled 3-bdrm, 2 1/2 bath home. Just \$251,400. M-688

FARM PRICE REDUCED

Tioga County dairy farm. 60 tie stall barn w/54 cows on pipeline. Currently 4 rows + box stalls on 2 barn cleaners. 2 silos w/unloaders, 2 outbuildings, 2 bdrm. trailer for hired hand. 3 to 4 bdrm., 2 story farm-house. 82 acres w/additional 100+ leased for \$1,500. Reduced from \$139,900 to \$129,000. M-416

**Call Coldwell Banker
SKS REALTY**

Kenneth Stover William Krizner Gerald Slick *MLS*

EVERETT, PA - BEDFORD COUNTY - 189 Acre Dairy Farm with Surge Milking Equipment, 28 Stanchions - 57 Free Stalls. Barn 50' x 70' with 80' x 70' extension, machine shed, pole equipment shed, 3 silos, corn shed and feed bin. Two-story 4 bedroom brick house with two car garage. Stream runs through property. \$325,000.00

E. PROVIDENCE TWP. - BEDFORD COUNTY - 3 bedroom farmette situate on 12.71 Acres - Greeting area with unique ship's mantel credenza welcomes you warmly to this intriguing retreat. The island kitchen with planning desk, separate walk-in pantry and 4 burner Jenn Aire will delight the chef. Formal dining room, a screened porch and window-walled family room. **REDUCED \$289,000.00.**

SNAKE SPRING TWP. - BEDFORD COUNTY - 145 Acre (110 tillable) working Dairy Farm with new buildings. Milk House - maternity for calves - 1,500 Gallon Stainless Steel Mueller Milk Tank - 2 Grain Bins - 106 Free Standing Full Size Stalls for Holsteins. 1971 Foremost Homes with 4 Bedrooms and full basement. \$365,000.00.

MANN'S CHOICE - BEDFORD COUNTY - EXCELLENT horse or beef farm (Former Dairy Farm). Some woods on the property. Stream at rear. 4 Bedroom farm house. 2 Car Garage. Nice Barn and Outbuildings. **GOOD FARM GROUND. REDUCED \$135,900.00.**

ARTEMAS - BEDFORD COUNTY - 2 Story farm house with 3 Bedrooms, 1 Car Garage, Pond, Barn, Tack Room/Garage. Training Pen/Riding Ring. Property borders stream. Beautiful views of surrounding mountains. Bountiful hunting. \$104,900.00.

COLERAIN TWP. - BEDFORD COUNTY - 130 +/- Acres (to be surveyed). Approximately 85 Acres tillable. 18'x18' milkhouse. 20'x40' Shed. 60'x66' Barn. 22'x32' Cattle Shed. Four Types of Soil. **CALL FOR COMPLETE DETAILS. \$255,000.00**

LICKING CREEK TWP - FULTON COUNTY - HARRISONVILLE, PA - DAIRY FARM - Large 40'x60' free stall barn with milking parlor, 20'x40' machine shed, older hay barn and concrete block shop. Several other buildings and a large pond on 148 Acres. 4 Bedroom Farmhouse. \$200,000.00 **CALL FOR COMPLETE DETAILS.**

CALL FOR MORE INFORMATION ON ANY OF THESE PROPERTIES. We also have numerous commercial, residential and vacation properties.



**Call For More Information
814-623-7009**

FARMS AVAILABLE

IN YORK COUNTY

- 144 Acre M/L Farm Located near Airville, Approximately 49 acres tillable balance wooded. House in poor condition, barn in fair condition. Toms Creek fronts on property. **\$325,000.**
- 64 Acre Farm, Airville Area, 7 yr. old hemlock log home, 5 stall barn, 3 car garage plus heated workshop, fenced pasture w/ stream & pond, 20 acres tillable, 7 pasture balance wooded, 2 additional building rights **\$350,000.**

For More Information Please Call

BENNETT WILLIAMS REALTY INC.

BH&G 717-843-5551

And Ask For Lee Kennedy 717-862-3869

or Jen Kennedy Posey 717-862-3866

137 Acre Beef Farm, Nice Ranch house with nice set of farm buildings, Berks County Tulpehocken Township along route 419. Priced to sell! **\$369,000**

165 Acre Dairy Farm with 42 tie stalls, plus another barn for additional cattle, heifer barn, 2 silos and good house. Berks County **\$450,000**

51 Acre General Farm in Centre Township, Berks County. Nice Setting. **\$269,000**

100 Acre Dairy Farm with 52 tie stalls, pipeline, 2 silos. Located along route 501 in Berks County. (More land available) **\$350,000**

**We need Farms in Lebanon County,
Both Dairy and General Farms.**

RICH BRANDT FARM REAL ESTATE

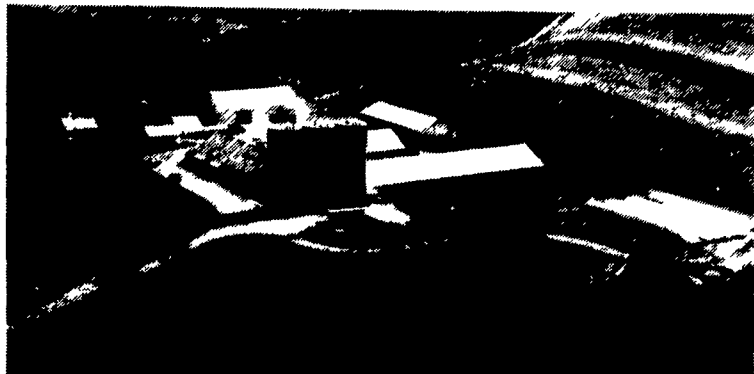
2033 Penn Avenue, West Lawn, Reading, PA 19609

1-800-899-9865

(717) 274-3622 - Office - (610) 678-1122

FAX: 610-678-8158

**ROTHROCK
GOLDEN HOLSTEIN FARM**



World Famous Holstein Breeding Farm

Beautiful 536 acre dairy farm known throughout the world for breeding and embryo transplants. Four complete sets of buildings in immaculate condition with four farm houses and three apartments. Three complete milking setups, Show barn and four Bank Barns.

Dairy Facilities consist of the following: A 52 cow World Class Show Barn Complex with 40 tie stalls and 12 box stalls cooled by evaporative cooling system in summer, attached office complex with secretary reception area, numerous private offices and conference room with large window to view milking barn all heated by cow power with heat pump backup. Adjoining the barn is an embryo fitting and medication facility, a 194x44 heifer barn with 110 head capacity and calf area with 40 individual pens. Large feed area connecting silos to main barn complex. Three 24x64 Harvestore silos and 549,000 gallon Slurrystore. Modern Maternity Barn housed in renovated Bank Barn with box stalls for calving and independent milking setup. There is also a separate barn with lockups and feed alley with pasture for up to 40 dry cows and an additional feed lot with lockups and feed bunk for an additional 60 head.

Large equipment shed and shop. There is an additional double 8 flat barn milking setup with 78 free stalls for production housed in one of the renovated Bank Barns along with one 24x60 and one 20x33 Harvestore silos. Another of the renovated Bank Barns is equipped with lockups, feed alley and pasture for 30 head of heifers/recipients. (Livestock and rolling stock not included).

STRATEGICALLY LOCATED JUST NORTH OF I-78 NEAR I-80, PA TURNPIKE AND AN INTERNATIONAL AIRPORT, NORTHWEST OF ALLENTOWN WITH LAND IN BOTH LEHIGH AND BERKS COUNTY. Call for additional information and to arrange to see this fine facility. Farm is shown by appointment only. \$3.1 million

For additional information on this property and other fine PA farms and estates contact:



**new pennsylvania
realty, inc.**

*Farms, Country Estates,
and Historic Properties*

**Perry Long at
717-386-5000 or
800-569-5167**

**227 Mush Daul Road
New Ringgold, PA 17960**