

# LANCASTER COUNTY LIVESTOCK MARKET AUCTION

## Lancaster Livestock

LANCASTER, PA  
FEBRUARY 13, 1996  
Cattle Calves Hogs Sheep Goats  
MONDAY'S AUCTION  
824 72 451 298 138  
LAST WEEK  
778 39 265 214 36  
LAST YEAR  
885 54 413 587 120

**CATTLE:** Slaughter steers 50-1.00 higher; slaughter heifers fully steady; cows steady; bullocks and bulls firm to 1.00 higher. Supply included 57 percent slaughter steers, 17 percent slaughter heifers, 18 percent cows, and 8 percent bulls.

**SLAUGHTER STEERS:** Choice 2-3 few 4 1075-1450 lb 62.25-64.25; Choice and Prime 2-4 1200-1480 lb 64.00-65.10; couple Choice and Prime 2-3 1300-1480 lb 66.00-66.50; Choice mostly 3 1500-1625 lb 57.25-62.10; Select and Low Choice 2-3 1075-1450 lb 58.50-62.00.

**HOLSTEINS:** Choice 2-3 1200-1550 lb 53.75-54.75; one lot Choice and Prime 2-3 1490 lb 59.25; Select 1-2 1100-1400 lb 49.00-52.00; few Choice 2-3 1660-1885 lb Heifers 51.00-53.75.

**SLAUGHTER HEIFERS:** Choice 2-3 980-1250 lb 59.35-62.25; Choice and Prime 2-3 990-1200 lb 61.50-65.35; Select 2-3 950-1200 lb 55.00-60.00.

**COWS:** LO DRESSING BULK HI DRESSING Breaking Utility and Commercial 2-3 37.00-39.00 39.00-40.50 Cutter and Boning Utility 1-2 32.00-35.00 35.00-38.00 Canner and low Cutter 26.00-30.00 30.00-33.00

**BULLOCKS:** Choice 2-3 1050-1350 lb 53.75-55.25.

**BULLS:** Yield grade 1 1200-1800 lb 43.75-49.50, few 52.00-55.00; Yield grade 2 1050-1400 lb 40.00-44.00.

**CALVES:** Vealers steady; slaughter calves mostly steady. Demand good for Holstein bulls and heifers to return to farm.

**VEALERS:** Couple Choice 270-300 lb 90.00-100.00; high Good and low Choice 80-110 lb 25.00-30.00.

**SLAUGHTER CALVES:** Good and Choice 250-375 lb 50.00-65.00, 400-500 lb 45.00-55.00, few Good 35.00-45.00.

**RETURNED TO FARM:** Bulk 85-110 lb Holstein bulls 55.00-65.00, few 85-110 lb Holstein heifers 70.00-80.00.

**HOGS:** Barrows and gilts 1.00-1.50 higher. US 1-2 220-260 lbs 47.00-48.00 US 1-3 220-260 lbs 45.75-46.75 260-280 lbs 44.85-46.50

**SOWS:** Mostly steady. Near 75 percent. US 1-3 300-400 lbs 27.00-28.60 400-500 lbs 28.00-31.00 500-650 lbs 33.00-34.00

**BOARS:** 300-650 lbs 25.00-26.00

**SHEEP:** Slaughter lambs firm to 5.00 higher; slaughter ewes 5.00 higher, instances 10.00 higher. Supply included 75 percent slaughter lambs with the balance

## Vintage Livestock

PARADISE, PA  
FEBRUARY 13, 1996  
Cattle Calves Sheep Goats  
TODAY  
827 919 6 2  
LAST TUESDAY  
625 774 5 0  
LAST YEAR  
811 942 0 0

**CATTLE... USDA ...** Supply included 26% slaughter steers and 65% cows ..sl. steers steady to .50 higher, sl. heifers steady, cows steady to weak, bulls fully steady, instances 1.00 higher.

**SLAUGHTER STEERS:** Choice 2-3 few 4 1100/1450 lbs. 61.75-64.00, few 64.00-64.25, Choice and Prime 2-3 1150/1450 lbs. 64.50-65.50, few 66.00-66.50, Select and Low Choice 2-3 1050/1450 lbs. 57.50-61.50.

**HOLSTEINS:** Choice 2-3 1350/1690 lbs. 51.85-56.60, Select 1-2 1100/1350 lbs. 50.75-52.50.

**HEIFERS:** few Choice 2-3 1350/1800 lbs. Holsteins 47.00-55.00, one lot Select 2-3 1150 lbs. 56.60.

**COWS:** Breaking Utility and Commercial 2-3 bulk 34.75-38.00, high dressing 38.00-41.75, Cutter and Boning Utility 1-3 low dressing 31.75-34.00, bulk 34.00-38.25, Canner and Low Cutter 1-2 low dressing 27.00-30.00, bulk 30.00-33.00.

**BULLS:** Yield Grade No. 1 1450/2275 lbs. 42.00-46.50.

**CALVES...Vealers steady.** Supply included 789 in graded sale of which 83% sold to return to farm.

**VEALERS:** High Good and Low Choice 120/250 lbs. 40.00-60.00, 80/110 lbs. 20.00-25.00, couple 25.00-32.00, Standard and Low Good 70/85 lbs. 15.00-20.00, one lot 60/65 lbs. 10.00.

**RETURNED TO FARM:** 30 head 120/125 lbs. Holstein bulls 70.00-74.00, 245 head 95/115 lbs. 74.00-78.00, 25 head 100/105 lbs. 85.00-87.00 and 45 head 90 lbs. 51.00, 25 head small frame 110/120 lbs. 61.00, 50 head 100/105 lbs. 45.00-51.00 and 60 head 90/95 lbs.

slaughter ewes

**SLAUGHTER LAMBS:** Choice 1-3 80-100 lb 105.00-115.00, 100-130 lb 90.00-100.00, 60-75 lb 115.00-125.00.

**NEW CROP LAMBS:** Choice 30-50 lb 150.00-200.00.

**SLAUGHTER EWES:** Utility and Good 1-2 90-120 lb 55.00-65.00, few 70.00, 120-180 lb 40.00-50.00; 2-3 100-250 lb 35.00-45.00.

**GOATS:** All goats sold by the head. Billies: Large 100.00-130.00; Medium 80.00-100.00. Nannies: Large 60.00-75.00; Medium 50.00-60.00. Kids: Choice 45.00-60.00; Good 35.00-45.00.

## Lancaster Livestock

LANCASTER, PA  
Wednesday, February 14, 1996  
Cattle Hogs  
TODAY  
76 569  
LAST WED.  
283 1055  
LAST YEAR  
38 62

**CATTLE... (USDA)... COMPARED WITH LAST WEEK'S SALE...SLAUGHTER STEERS AND HEIFERS STEADY, COWS AND BULLS NOT TESTED.**

**SLAUGHTER STEERS: PART LOAD CHOICE AND PRIME 2-4 1265-1340 LBS. 64.00-64.25, PART LOAD SELECT AND CHOICE 2-3 1260-1450 LBS. 59.75-60.75.**

**HOLSTEINS: LOAD CHOICE AND PRIME 2-3 1370-1670 LBS. 52.85-55.10. HEIFERS: PART LOAD CHOICE AND PRIME 2-3 1100-1200 LBS. 61.10-61.50.**

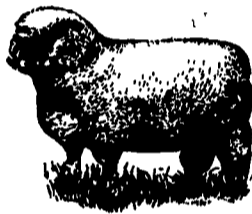
**BARROWS AND GILTS: 1.00-2.00 HIGHER. US1-2 220-250 LBS. 48.00-50.00; 3-4 280-310 LBS. 41.00-42.50.**

**SOWS: SCARCE. US1-3 FEW 300-500 LBS. 28.00-33.00; COUPLE 500-600 LBS. 33.00-43.00.**

32.00-35.00; 30 head 100/115 lbs. Holstein heifers 119.00-210.00 and 20 head 90/95 lbs. 99.00, 20 head small frame 90/105 lbs. 81.00-84.00, 20 head 80/85 lbs. 31.00-44.00 and 20 head 70/75 lbs. 25.00-27.00.

**SHEEP...NEW CROP LAMBS: six head Choice 35/50 lbs. 140.00-147.00.**

**GOATS... Sold by the head. BILLIES: one Large 132.00.**



## LEBANON VALLEY LIVESTOCK MARKET, INC.

1 mile East of Fredericksburg along Rt. 22

### PHONE

JONESTOWN  
(717) 865-2881

Flea Market Auction every Tuesday at 12:30. Tools, Eggs, Produce, Etc. Buyers & Sellers Welcome

## B&R CATTLE CO

RD 1, Marietta, PA 17547  
Office Phone: (717) 653-8164

Specializing in Stockers & Feeders

JOHN BOWMAN  
(717) 653-5728

RON RANCK  
(717) 656-9849

## New Holland Livestock

LANCASTER, PA  
FEBRUARY 15, 1996  
Cattle Calves Sheep Goats  
TODAY  
1313 660 526 345  
LAST THURSDAY  
1051 570 180 185  
LAST YEAR  
1022 498 129 177

**CATTLE:** Slaughter steers steady to 1.00 lower, closing 50-1.00 lower; slaughter heifers steady; cows 1.00-2.00 lower; bulls fully steady. Supply included 39 percent slaughter steers and 39 percent cows.

**SLAUGHTER STEERS:** Choice 2-3 few 4 1100-1450 lb 59.75-64.00; High Choice and Prime 2-4 1200-1450 lb 63.35-64.75; couple Choice 2 1200-1425 lb 64.50-65.10; Choice and Prime mostly 3 1500-1650 lb 57.50-60.25; Select and low Choice 2-3 1050-1450 lb 56.00-61.00; few Select 1-2 1050-1325 lb 53.00-57.00.

**HOLSTEINS:** High Choice and Prime 2-3 1325-1550 lb 54.75-55.50, couple 58.75; Choice 2-3 1250-1650 lb 50.85-54.75; Select 1-2 1070-1500 lb 47.00-50.00.

**SLAUGHTER HEIFERS:** Choice 2-3 975-1275 lb 59.75-61.00; few Choice and Prime 2-3 1050-1275 lb 62.00-62.60; Select 1-2 935-1200 lb 55.00-58.00.

**COWS: LOW DRESSING BULK HIGH DRESSING** Breaking Utility and Commercial 2-3 32.00-35.50 36.00-40.00 Cutter and Boning Utility 1-3 29.75-32.00 32.00-35.00 35.00-37.50 Canner and low Cutter 1-2 25.00-27.50 27.50-31.50

**BULLS:** Yield grade 1 1200-1900 lb 44.00-49.00, couple 50.00-56.50; Yield grade 2 1050-1600 lb 38.75-44.00.

**CALVES:** Vealers steady. Demand fair for Holstein bulls and heifers to return to farm.

**VEALERS:** Couple Choice 220-300 lb 80.00-86.00; high Good and low Choice 150-340 lb 48.00-65.00, 80-110 lb 24.00-30.00, few 30.00-34.00; Standard and low Good 65-85 lb 15.00-24.00.

**RETURNED TO FARM:** Bulk 90-120 lb Holstein bulls 60.00-80.00, few 84.00-89.00, 70-85 lb 45.00-60.00; small frame 90-110 lb 50.00-60.00, 65-85 lb 35.00-45.00; few 90-110 lb Holstein Heifers 90.00-125.00.

**SHEEP:** Slaughter lambs 5.00-10.00 higher; slaughter ewes fully steady. Supply included 85 percent slaughter lambs with the balance slaughter ewes.

**SLAUGHTER LAMBS:** Choice 1-3 90-130 lb 96.00-106.00, 70-90 lb 106.00-127.00, few 60-70 lb 117.00-132.00.

**NEW CROP LAMBS:** Few Choice 40-60 lb 165.00-205.00.

**SLAUGHTER EWES:** Choice 2-3 65.00-78.00; Utility and Good 1-3 40.00-60.00, few 2-3 27.00-35.00.

## Lancaster County Weekly

LANCASTER, PA  
FEBRUARY 16, 1996  
Cattle Calves  
THIS WEEK  
3050 1650  
LAST WEEK  
2737 1383  
LAST YEAR  
2890 1502

**CATTLE:** Slaughter steers uneven during the week, closed weak to 50 lower; slaughter heifers steady; cows 2.00-3.00 lower; bullocks and bulls steady to 1.00 higher. Supply included 41 percent slaughter steers, 9 percent slaughter heifers, 39 percent cows, 5 percent bulls, with the balance feeders.

**SLAUGHTER STEERS:** Choice 2-3 few 4 1075/1450 lbs. 59.75-64.00, few early 64.00-64.25; choice and prime 2-4 1200/1450 lbs. 63.35-65.10; choice and prime 2-3 1150/1450 lbs. 64.75-65.50, few 66.00-66.50; choice and prime mostly 3 1500/1650 lbs. 57.50-60.25; select and low choice 2-3 1050/1450 lbs. 56.00-61.00; few select 1-2 1050/1325 lbs. 53.00-57.00.

**HOLSTEINS:** High choice and prime 2-3 1325/1650 lbs. 54.75-56.50; few 58.75-59.25; choice 2-3 1200/1650 lbs. 50.85-54.75; select 1-2 1050/1400 lbs. 47.00-51.00.

**SLAUGHTER HEIFERS:** Choice 2-3 975/1275 lbs. 59.35-62.25; few choice and prime 2-3 990/1275 lbs. 61.50-65.35; select 1-3 935/1200 lbs. 55.00-60.00.

**COWS:** Breaking utility and commercial 2-3 32.00-36.00, 36.00-41.00; cutter and boning utility 1-3 29.75-35.50, 36.50-38.25; canner and low cutter 1-2 25.00-28.00, 28.00-31.50, few 31.50-33.00.

**BULLOCKS:** Choice 2-3 1050/1350 lbs. 53.75-55.25.

**BULLS:** Yield grade 1 1200/1900 lbs. 43.75-49.50, few 50.00-56.50; Yield grade 2 1050/1600 lbs. 38.75-44.00.

**CALVES:** Vealers and slaughter calves steady. Demand fair for Holstein bulls and heifers to return to farm.

**VEALERS:** Few choice 220/300 lbs. 80.00-100.00; high good and low choice 150/340 lbs. 48.00-65.00, 80/110 lbs. 24.00-30.00 few 30.00-34.00; standard and low good 65/85 lbs. 15.00-24.00, couple lots 60/65 lbs. 10.00.

**SLAUGHTER CALVES:** Good and choice 250/375 lbs. 50.00-65.00, 400/500 lbs. 45.00-55.00; few good 35.00-45.00.

**RETURNED TO FARM:** Bulk 90/120 lbs Holstein bulls 60.00-80.00, few 80.00-89.00, 70/85 lbs. 45.00-60.00; small frame 90/110 lbs. 50.00-61.00, 65/85 lbs. 32.00-45.00, few 90/120 lbs Holstein heifers 90.00-125.00; small frame 90/105 lbs. 81.00-84.00, few 80/85 lbs. 31.00-44.00.

## QUALITY FEEDER CATTLE

Financing Available

\* Fixed Interest Rates • Interest Due when Cattle Are Sold • No Monthly Payments

## SCARFF BROS. INC.

Cattle Dealers • Licensed & Bonded  
2300 Fallston Road • Fallston MD 21047

Lance N. Scarff  
Farm (410) 877-0370  
Fax (410) 877-7802

C. Howard Scarff, II  
Home (717) 445-4355  
Fax (717) 445-7237  
Mobile (717) 940-2633

W. Conly Scarff  
Home (410) 838-5883  
Mobile (410) 790-2650

Contract Feeding Programs • Marketing of Finished Cattle • Dairy Heifers

## HAY, STRAW, & CORN — SALE —

Sale Starts Every Friday At 10 AM



## GREEN DRAGON MARKET & AUCTION

955 N. State St.  
Ephrata, Pa. (717) 738-1117  
1 mile North of Ephrata on N. State St.  
Out of State Buyers-Cash or Certified Check Only

## Get more capacity and better service from Chore-Time's New Next Generation bin



High Capacity 40° roof (left) allows more storage and stays cleaner than conventional 30° roof (right)



Hydro-Shield™ Weather Guard prevents water from running down hopper



ACCESS PLUS™ permits easy clean out of the bin from the ground.

Call for pricing on bins assembled and delivered to your farm

## Contracts Available Call For Information

- Broilers
- Turkey
- Breeder
- Hog Finishing

Call For Our Free Brochure "What Is Contract Production?"

Replace your bulbs and save electricity with SCREW IN FLUORESCENT LIGHTS 5-7-9 Watts 5.49 ea. 13 Watts 5.79 ea.

Light Bulbs 25 to 100 Watts 34¢ Ea. Brass Base - 5000 Hrs.

In Stock-36" & 48" Wide Kraft Paper

Northeast Agr. Systems, Inc.  
Flyway Business Park  
139A West Airport Road  
Litz, PA 17543  
Ph (717) 569-2702  
1-800-673-2580



Made in USA

## VINTAGE SALES STABLES, INC.

### SALE TUESDAYS

10:30 A.M.  
SLAUGHTER CATTLE AUCTION- STEERS, BULLS, HEIFERS. COWS, FEEDER CATTLE

6:30 P.M.  
CALVES, SHEEP, GOATS •GET CALVES IN EARLY- OUR STATE GRADER STARTS AT 10:30 A.M.

Selling Feeders Every Tuesday At Approx. 1 PM

## FOR MORE INFORMATION CONTACT

L. ROBERT FRAME, SR., PRESIDENT  
BUS (717) 442-4181 BUS (717) 768-8204  
HOME (215) 458-8518  
IRWIN MARTIN, FIELD REP.  
(717) 733-7434  
KENNETH E. HERSHEY, FIELD REP.  
(717) 442-4874

TRUCKING SERVICE AVAIL-LOCAL & LONG DISTANCE (RT. 30, 10 MILES EAST OF LANCASTER IN PARADISE, PA)

