

**1 FARM EQUIPMENT**

**ENGINE OVERHAUL KITS**

**Clevite**

**PERFECT CIRCLE HEAVY DUTY ENGINE PARTS**



Example:

Allis Chalmers	670T Engine	\$1,893
Case	G188D Engine	\$560
Ford	120 Gas	\$225
IHC	D282	\$726
Deere	6404	\$1,073

These kits feature premium performance AE Clevite or Perfect Circle Engine Components. Includes: Pistons, Piston Pins, Rings, Sleeves, Rod & Main Bearings and overhaul gasket set. -Call with your application today -Limited Lifetime Warranty! **Free bearing installing kit with each overhaul kit. • Call for details**

**Penn Diesel Service Co.**  
Interstate 81, Exit 27  
Harrisburg, PA 17112  
(717) 545-4207 (800) 535-2913

**YORK COUNTY FARM & INDUSTRIAL EQUIPMENT CO., INC**

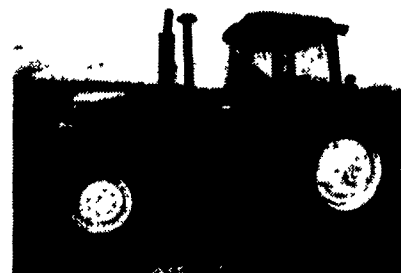
Box 222 EMIGSVILLE, PA  
(717) 764-6412 OR (717) 764-5115



**TRACTORS**  
Kobelco 4 Wheel Articulated Payloader  
Ford 545 w/loader  
Ford 2000 (2)  
Ford 2600 w/cab & front blade  
Ford 3400 w/loader  
Ford 5610 Special II w/rollbar  
Ford 3930 45hp w/roll bar  
JD 3020 dsl, NF  
JD 650 w/mid mount mower  
JD 870  
Kubota L3350 4WD w/Loader & backhoe  
Kubota L2350  
Kubota L245 w/loader  
Int. 766 WF  
Int. 444  
Farmall 460 dsl  
Farmall 100 w/mid-mount mower  
Farmall 130 & 140

**LOADERS FOR VARIOUS TRACTORS**  
**TILLAGE TOOLS & CULTIVATORS**  
**MISC.**  
New 3pt 96" snow blower  
JD A 2800 4x semi-mount plow w/cylinders  
Kewanee 15' transport disc (like new)  
Brillion 12' cutlpacker (new)  
New 3 pt Fert. Spreader  
3 pt Stone Scrapers  
Regular & Heavy Duty 3 Pt Scraper Blades  
New Woods Rotary Mowers 5' to 15' in stock

**Large Selection of New Used & Reconditioned Equipment & Tractors**

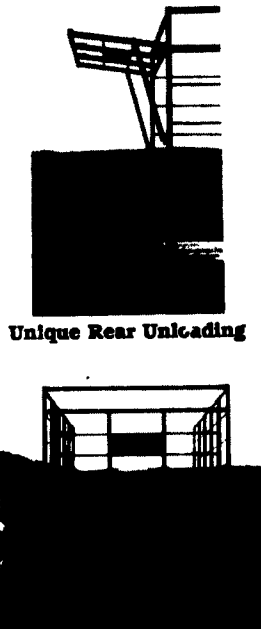


John Deere 4640, Hyd FWD One Owner, 2390 Hrs. - \$29,500

- JD 1350/1450 6 btm - \$1,450
- JD 350 Hyd Reset 5 btm - \$1,750
- JD 1710 11' Mulc Tiller - \$4,750
- JD 1740 24' Harrow - \$950
- JD 8300 Drill 23 Openers w/Grass Seeder - \$2,950
- Kewanee 23' Rolelr Harrow - \$5,950
- JD 6 Row Cult. - \$950
- JD 15' Rotary Hoe - \$1,050

Down sizing operation, selling as above O B O.  
**(908) 369-4967**

**DUTCH BROTHERS**



- 18'x8' inside
- 14 ga. square tubing, for extra strength and long life
- Front and rear openings need only 38" clearance
- End gates made of extra heavy expanded metal, and spring loaded latches
- Beds built of all oak
- 3"x8" main beams
- 2"x5" cross member
- Nailed with galvanized nails
- Bolted with plated bolts
- Fabricated side rail for extra strength
- 8 ton gear
- 11L tree & tubes
- Extension tongue
- Built to last

**New Chain Release Side Opening**

**Now Standard Extra Wide 82" Track Rugged Built Gears 8, 10, 12 Ton & Tandem**

**Dutch Brothers**  
(717) 776-7465 or  
(717) 776-3363

"Also 16' and 18' Flat Beds"  
Special Prices Good Until  
March 15, 1996

**New & Used Equipment**

- New Case IH 1820 6R Rigid Cultivator..... **\$2,899**
- New Case IH 4518 Folding Cultivator..... **\$4,375**
- New Case IH 181 Rotary Hoe..... **\$3,899**
- MF 375 Tractor w/Loader, 700 Hrs. **\$17,900**
- IH 1086 Tractor w/Cab..... **\$12,900**
- 1991 Case IH 3309 Discbine Mowed Less Than 300 Acres..... **\$9,500**
- AC 6080 Tractor dsl., Good Condition..... **\$10,900**
- Used Case IH 7120 MFD, 1200 Hrs., Exc. Cond..... **\$50,000**
- IH 56 Blower, Exc. Cond..... **\$1,500**
- 1992 Case IH 3309 Discbine, Exc. Cond..... **\$8,500**
- NI 323 Corn Picker..... **\$2,000**
- Brillion 12' Roller Harrow, Exc. Cond..... **\$5,000**

**Route 45 Sales and Service**

Spring Mills, PA 16875  
(814) 422-8805 (800)547-3465

**CASE III**

**TRACTORS**

- NEW set 18.4x34, 10-ply dual wheel & tires, fits MF tractor
- NEW set 18.4x34, 6-ply rear wheel & tires, fits MF 399
- MF 360, 4WD, w/loader, 230 hrs.
- MF 2675, Nice
- MF 65
- MF 1130, Nice
- MF 1155 w/duals, Nice, 3385 Hrs.
- MF 3660 w/154 hours
- MF 375, 4WD, 35 Hrs.
- MF 20C Tractor Loader w/cab (NEW)
- Farmall 300
- Hesston Flat 666 4WD tractor & loader

**SKID LOADERS**

- MF 246, Loader w/Mounting kit for MF 1135
- Gehl SL4610 diesel
- MF 236 loader

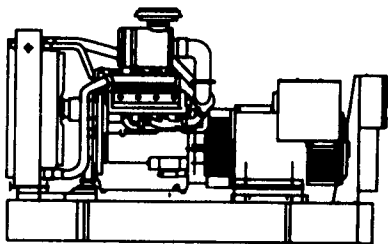
**MISC**

- Martin S1666 Scavenger Spreader
- Gehl MX115 Mixer Grinder
- Weaverline 330 Feed Cart
- Gehl 7210 TMR mixer, 1 year old, nice
- Wic 3 pt hitch bedding chopper

**LONGENECKER'S INC.**  
Williamsburg, PA 16693  
**814-793-3731**

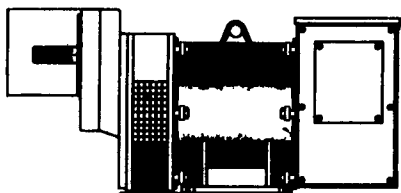
**GENERATOR SYSTEMS**

**1-800-779-8809**



**New & Used 5 to 2500 KW Diesel • Propane • Natural Gas**

**24 Hour Emergency Service Sales - Installation Maintenance Contracts • Rentals**



**10 To 150 KW 1800 RPM Brushless Tractor Driven Generators**

**DYNA TECH<sup>®</sup> Ind.**  
Dynamic Technologies

**DYNA-TECH INDUSTRIES**

602 E. Evergreen Rd., Lebanon, PA 17042  
**717-274-8899 Fax 274-5334**

Ask About Our Lightning & Surge Protection Units  
Panel Mount • Plug-In • Electric Fence Protection

(717) 428-1517 or 717/741-1797  
Fax No (717) 428-2990

RR 2 Box 314A, Kreidler Rd.  
York, PA 17403  
(Exit 3 Off Interstate 83)

**Douglas EQUIPMENT & SUPPLY CO.**

**Authorized Dealer For York Rakes & Power Brooms**

- Just In...**
- Clark 45C, 4WD Loader, EROPS, Detroit Diesel
- Ford 4500 TLB, EROPS, Diesel
- Clark 55C, 4WD Loader, EROPS, Detroit Diesel
- Lull 844 Forklift, 4WD, 4 Whl. Steer, 34' Lift, 8,000 Lb. Capacity
- Cat E110B Hyd. Excavator, 1990, Very Good Condition

- Coming In...**
- Clark 301S Grader, Power Shift, 6x6, Detroit Diesel, EROPS
- Case 586E, Forklift, 14' Lift, Cab, Heater, 4WD

(2) 1987 L-9000 FORDS 240 H.P. Cummins, Low Mileage, 7 Speed Trans., Cent. Hyds. Set Up For P/A Snowplow & Salt Spreader & 20 Ton Tag Trailers, 36,200 GVW

1978 Int. Dump S2500 Series, DT466 Engine, 5+2, 10.00x20 Tires, AB, PS, Central Hyd., 33,400 GVW, Setup For Snow Plow & Spreader, 34,000 Original Miles, Municipal Owned

**NEW CUSTOM TRAILERS IN STOCK**  
3-Ton Tilts E/B; 4-Ton Tandems E/B; 20-Ton Tandem A/B

**FORD 2110 TRACTOR**  
Side Sickle, Gas, 3 PL, PTO, 8 Spd., Low Pro. \$4,750

**CRANES - CHERRY PICKERS**  
125 Gallon - Gas 60' Boom Cab - 4x4 - 12 1/2 Ton \$10,000

4386 Int 4x4, 2450 Hrs., 3 Rear Outlets, Cab, C&P, Nice Tractor \$17,500

**HUBER MAINTAINERS**  
M-500 Gas.....\$5,500  
M-600 Gas.....\$6,500  
M-650 Diesel, Front Blade, Wide Tires  
We Buy & Sell Huber Maintainers For Parts M-52's-500's-600's-700's-800's

**RUBBER TIRE ROLLERS**  
1979 Gallon 9 wheel, Diesel, Good Cond \$6,500  
Gallon 9 wheel gas \$2,500

**Many Pieces Not Listed! If You Don't See It - Give Us A Call!**

Dealer For Red Line Electric Brake Parts & Trailer Hitches. All Types Of Hitch Accessories.

**CAT D6D, OROPS, Straight Blade w/Tilt, Good UC, C&P \$37,500**

1976 Clark 301P Grader, Power Shift, 4x4 Detroit Diesel, EROPS, Heater, Scarifier, Tilt Mold Board

**GRADALLS**  
G-440 - Ford Gas Down Det. Diesel Up Remote; \$12,500  
G-600 - Det. Diesel Up & Down Remote \$8,500

**Authorized Distributors & Dealers For Meyer, Fisher, Swenson & Buyers Products Snow & Ice Control Equipment Pberless Tire Chains All Types**

**New & Used Snow Equipment SALES - SERVICE - PARTS**

Old Man Winter Is Here!