

LANCASTER COUNTY LIVESTOCK MARKET AUCTION

Lancaster County Weekly

LANCASTER, PA
FEBRUARY 9, 1996

Cattle Calves

THIS WEEK	2750	1385
LAST WEEK	3299	1619
LAST YEAR	2244	1372

CATTLE: Slaughter steers weak, instances 50 lower; slaughter heifers 1.00-2.00 higher, although not fully tested after Monday; cows 1.00-2.00 higher; bullocks scarce; bulls fully steady. Supply included 47 percent slaughter steers, 8 percent slaughter heifers, 33 percent cows, 4 percent bulls, with the balance feeders.

SLAUGHTER STEERS: Choice 2-3 few 4 1075-1450 lb 60.25-63.50; Choice and Prime 2-4 1250-1450 lb 63.50-64.50; few Choice and Prime 2-3 1125-1375 lb 65.25-67.00; Select and low Choice 2-3 1050-1400 lb 56.00-61.00.

HOLSTEINS: High Choice and Prime 2-3 1170-1600 lb 56.25-58.00, couple 58.00-60.00; Choice 2-3 1100-1625 lb 52.75-56.50; Select 1-2 1200-1450 lb 47.75-51.00.

SLAUGHTER HEIFERS: Choice 2-3 975-1325 lb 60.00-63.35; High Choice and Prime 2-3 1180-1300 lb 63.35-64.10.

COWS: LOW DRESSING BULK HIGH DRESSING Breaking Utility and Commercial 2-3 34.50-40.00 40.00-43.00 Cutter and Boning Utility 1-3 32.00-34.00 34.00-38.00 38.00-39.50 Canner and low Cutter 1-2 26.00-30.00 30.00-34.00

BULLS: Yield grade 1 1200-2300 lb 42.00-48.75, few 51.00-55.00; Yield grade 2 1050-1800 lb 39.00-43.00.

CALVES: Vealers over 110 lb scarce, high Good and low Choice 80-110 lb firm to 5.00 higher; slaughter calves steady to 5.00 higher. Demand good for Holstein bulls and heifers to return to farm.

VEALERS: Couple Choice 220-260 lb 62.00-64.00; high Good and low Choice 150-340 lb 44.00-58.00, 100-115 lb 33.00-40.00, 80-100 lb 28.00-35.00; Standard and low Good 60-80 lb 18.00-28.00.

RETURNED TO FARM: Bulk 90-120 lb Holstein bulls 90.00-105.00, few 105.00-115.00, 75-85 lb 45.00-80.00; small frame 90-110 lb 40.00-75.00, 70-85 lb 30.00-45.00; bulk 85-115 lb Holstein Heifers 100.00-125.00, few 130.00-145.00; small frame 90-110 lb 80.00-100.00, 70-85 lb 50.00-80.00.

SHEEP: Slaughter lambs and slaughter ewes fully steady. Supply included 50 percent slaughter lambs with the balance slaughter ewes.

SLAUGHTER LAMBS: Choice 1-3 80-110 lb 95.00-105.00, 110-140 lb 83.00-92.00, 65-75 lb 105.00-124.00, with few 50-65 lb 118.00-128.00.

SLAUGHTER EWES: Choice 2-3 52.00-58.00; Utility and Good 1-3 35.00-53.00, few 2-3 25.00-35.00.

GOATS: All goats sold by the head. Billies: Large 89.00-100.00, couple 116.00-122.00; Medium 60.00-85.00; Small 45.00-60.00. Mutton: Large 67.00-88.00; Medium 48.00-65.00. Nannies: Large 55.00-75.00; Medium 40.00-55.00. Kids: Choice 32.00-45.00; Good 22.00-35.00.

Lancaster Livestock

LANCASTER, PA
FEBRUARY 6, 1996
Cattle Calves Hogs Sheep Goats
MONDAY'S AUCTION

778	39	265	214	36
948	65	222	488	471

LAST WEEK
664 29 115 272 355

CATTLE: Slaughter steers fully steady; slaughter heifers 1.00-2.00 higher; cows steady; bullocks scarce; bulls fully steady. Supply included 70 percent slaughter steers, 11 percent slaughter heifers, 9 percent cows, and 10 percent bulls.

SLAUGHTER STEERS: Choice 2-3 few 4 1100-1450 lb 60.50-63.50; couple lots Choice with end of Prime 2-4 1275-1425 lb 63.50-64.50; couple Choice 2 1200-1275 lb 64.75-65.00; Choice 3-4 1450-1580 lb 58.75-61.00; Select and low Choice 2-3 1080-1400 lb 56.00-61.00, with around 20 head 1085-1125 lb returned to feed at 58.75-60.50.

HOLSTEINS: Choice 2-3 1100-1500 lb 53.00-56.00; few High Choice and Prime 2-3 1170-1500 lb 55.50-57.75; Select 1-2 1200-1450 lb 47.75-51.50.

SLAUGHTER HEIFERS: Choice 2-3 975-1325 lb 60.00-63.35; High Choice and Prime 2-3 1180-1300 lb 63.35-64.10.

COWS: LO DRESSING BULK HI DRESSING Breaking Utility and Commercial 2-3 34.00-38.00 38.00-40.00 Cutter and Boning Utility 1-2 32.00-36.00 36.00-37.00 Canner and low Cutter 27.00-30.00 30.00-32.50

BULLS: Yield grade 1 1200-2300 lb 42.00-48.75, few 51.00-55.00; Yield grade 2 1050-1500 lb 39.00-42.00.

CALVES: Vealers scarce; slaughter calves steady to 5.00 higher.

VEALERS: High Good and low Choice 80-110 lb 20.00-30.00.

SLAUGHTER CALVES: Good and Choice 250-350 lb 48.00-62.00, 350-600 lb 40.00-47.00.

HOGS: Small barrows and gilts steady. US 1-3 210-260 lbs 45.00-46.85 US 1 Few 220-250 lbs 47.00-48.00

SOWS: 50-1.00 higher. Near 80 percent. US 1-3 300-400 lbs 28.00-31.00 400-500 lbs 31.00-33.50 500-650 lbs 34.00-35.00

BOARS: 300-650 lbs 25.00-26.25

SHEEP: Slaughter lambs steady to 5.00 higher; slaughter ewes steady. Supply included 75 percent slaughter lambs with the balance slaughter ewes.

SLAUGHTER LAMBS: Choice 1-3 80-110 lb 95.00-110.00, 60-80 lb 105.00-120.00, 110-140 lb 90.00-98.00.

SLAUGHTER EWES: Utility and Good 1-2 90-125 lb 45.00-55.00, 2-3 125-250 lb 30.00-40.00.

GOATS: All goats sold by the head.

Vintage Livestock

PARADISE, PA
FEBRUARY 6, 1996
Cattle Calves Sheep Goats

TODAY

621	774	5	0
-----	-----	---	---

LAST TUESDAY

866	921	4	0
-----	-----	---	---

LAST YEAR

530	842	4	7
-----	-----	---	---

CATTLE... USDA ... Supply included 28% slaughter steers and 61% cows ..sl. steers .50 higher, sl. heifers and bulls steady, cows firm to 1.00 higher.

SLAUGHTER STEERS: Choice 2-3 few 4 1075/1425 lbs. 61.75-64.50, few 64.50-65.25, Choice and Prime 2-3 1125/1375 lbs. 65.25-67.00, couple 57.25-67.50, Select and Low Choice 2-3 1050/1400 lbs. 58.00-61.50.

HOLSTEINS: Choice 2-3 1235/1530 lbs. 52.00-55.50.

HEIFERS: Choice 2-3 1050/1335 lbs. 50.00-61.00.

COWS: Breaking Utility and Commercial 2-3 bulk 34.00-39.00, high dressing 39.00-41.75, Cutter and Boning Utility 1-3 low dressing 32.50-34.50, bulk 34.50-38.00, high dressing 38.00-39.50, Canner and Low Cutter 1-2 low dressing 28.00-30.00, bulk 30.00-34.00.

BULLOCKS: couple Choice 3 1240/1265 lbs. 57.57.

BULLS: Yield Grade No. 1 1300/1850 lbs. 40.75-44.75.

CALVES...Vealers steady, although weights over 110 lbs. not tested. Supply included 694 in graded sale of which 84% sold to return to farm.

VEALERS: High Good and Low Choice 25.00-31.00, Standard and Low Good 60/75 lbs. 10.00-24.00.

RETURNED TO FARM: 30 head 120/125 lbs. Holstein bulls 86.00-99.00, 260 head 95/115 lbs. 88.00-103.00, 75 head 85/90 lbs. 82.00-91.00 and 15 head 80 lbs. 32.00, 105 head small frame 90/115 lbs. 60.00-71.00; 40 head 90/115 lbs. Holstein heifers 133.00-146.00 and 20 head 80/85 lbs. 50.00, 10 head small frame 90/95 lbs. 60.00 and 25 head 65/85 lbs. 20.00-35.00.

SHEEP...NO MARKET TEST!

GOATS...NO MARKET TEST!

Billies: Medium 60.00-80.00. Nannies: Medium 50.00-70.00. Kids: Good and Choice 30.00-50.00.

Lancaster Livestock Auction

Wednesday's market report has been discontinued until further notice because of insubstantial receipts.

VA Feeder Sales

ORANGE, VA
FEBRUARY 7, 1996

Prices based on in weights
Feeder Cattle 68 head Steers 12 head Small 1 400-500 44.50 Holstein 6 head Steer Medium and Large 2 300-500 39.00 1100+ 39.00 Heifers 36 head Medium 1 Small 1 Medium and Large 2 300-400 - 34.00-38.00 - 400-500 41.50 - 34.00-42.00 500-600 - 35.00 - Bulls 14 head Medium 1 500-600 41.00-50.00

SOUTHSIDE, VA
FEBRUARY 7, 1996

Prices based on in weight
Feeder Cattle 78 head Steers 28 head Small 1 Medium and Large 2 300-400 34.50-40.00 44.00-48.00 400-500 - 46.00-52.50 500-600 - 48.00-52.50

MARSHALL, VA
FEBRUARY 6, 1996

Steers: Choice 2-3 1150-1300 lbs 61.30-61.80 Choice 2-3 1300-1450 lbs 60.90-62.50 Choice 2-3 1451-1465 lbs 61.00-63.00 Select 2-3 1000-1200 lbs 57.50 Select 2-3 1210-1250 lbs 55.75-57.00

Because of recent inclement weather, several markets indicated reduced sales and several were unavailable.

LEBANON VALLEY LIVESTOCK MARKET, INC.

1 mile East of Fredericksburg along Rt. 22

PHONE
JONESTOWN
(717) 865-2881

Flea Market Auction every Tuesday at 12:30. Tools, Eggs, Produce, Etc. Buyers & Sellers Welcome

HAY, STRAW, & CORN — SALE —

Sale Starts Every Friday At 10 AM

GREEN DRAGON MARKET & AUCTION

955 N. State St.
Ephrata, Pa. (717) 738-1117
1 mile North of Ephrata on N. State St.
Out of State Buyers-Cash or Certified Check Only

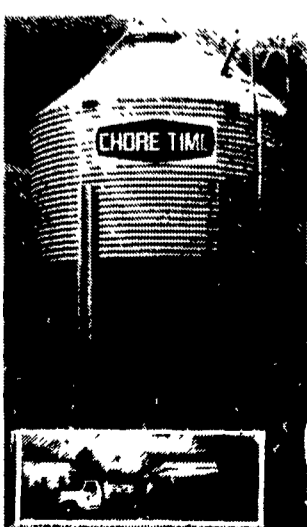
B&R CATTLE CO

RD 1, Manetta, PA 17547
Office Phone: (717) 653-8164

Specializing in Stockers & Feeders

JOHN BOWMAN (717) 653-5728
RON RANCK (717) 656-9849

Get more capacity and better service from Chore-Time's New Next Generation bin



High Capacity 40' roof (left) allows more storage and stays cleaner than conventional 30' roof (right)



Hydro-Shield™ Weather Guard prevents water from running down hopper



ACCESS PLUS™ permits easy clean out of the bin from the ground.

Call for pricing on bins assembled and delivered to your farm

Contracts Available Call For Information

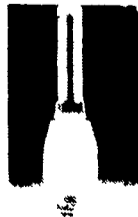
- Broilers
 - Breeder
 - Turkey
 - Hog Finishing
- Call For Our Free Brochure "What Is Contract Production?"

Replace your bulbs and save electricity with SCREW IN FLUORESCENT LIGHTS
5-7-9 13
Watts 5.49 ea. Watts 5.79 ea.

Light Bulbs 25 to 100 Watts 34¢ Ea. Brass Base - 5000 Hrs.

In Stock 36" & 48" Wide Kraft Paper

Northeast Agr. Systems Inc
Flyway Business Park
139A West Airport Road
Lititz, PA 17543
Ph. (717) 569-2702
1-800-673-2580



Delmarva Store
305 University Ave
Federalsburg, MD
formerly Long Lumber
1-800-735-4361

VINTAGE SALES STABLES, INC.

SALE TUESDAYS

10:30 A.M.
SLAUGHTER CATTLE AUCTION-
STEERS, BULLS, HEIFERS
COWS, FEEDER CATTLE

6:30 P.M.
CALVES, SHEEP, GOATS
•GET CALVES IN EARLY-
OUR STATE GRADER
STARTS AT 10:30 A.M.

Selling Feeders Every Tuesday
At Approx. 1 PM

FOR MORE INFORMATION CONTACT

L. ROBERT FRAME, SR., PRESIDENT
BUS (717) 442-4181 BUS (717) 768-8204
HOME (215) 458-8518
IRWIN MARTIN, FIELD REP.
(717) 733-7434
KENNETH E. HERSHEY, FIELD REP.
(717) 442-4874

TRUCKING SERVICE
AVAIL-LOCAL &
LONG DISTANCE
(RT. 30, 10 MILES EAST
OF LANCASTER IN
PARADISE, PA)

